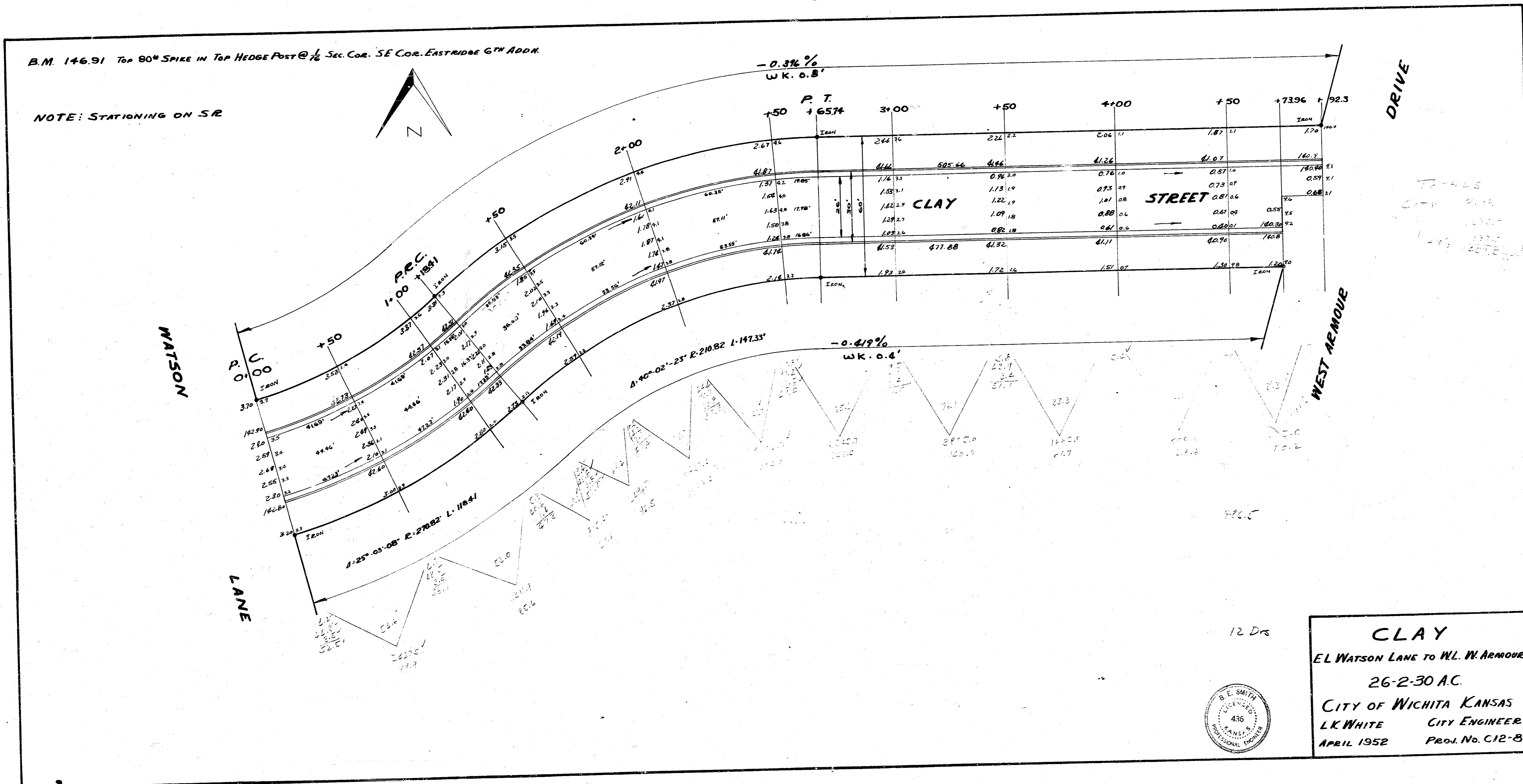


63-Y

B.M. 146.91 Top 80" SPIKE IN TOP HEDGE POST @ 1/4 Sec. Cor. SE Cor. EASTRIDGE 6TH ADDN.

NOTE: STATIONING ON SR



12 Drs

**CLAY**  
 EL WATSON LANE TO WL. W. ARMOUR  
 26-2-30 A.C.  
 CITY OF WICHITA KANSAS  
 L.K. WHITE CITY ENGINEER  
 APRIL 1952 PROJ. No. C12-8

