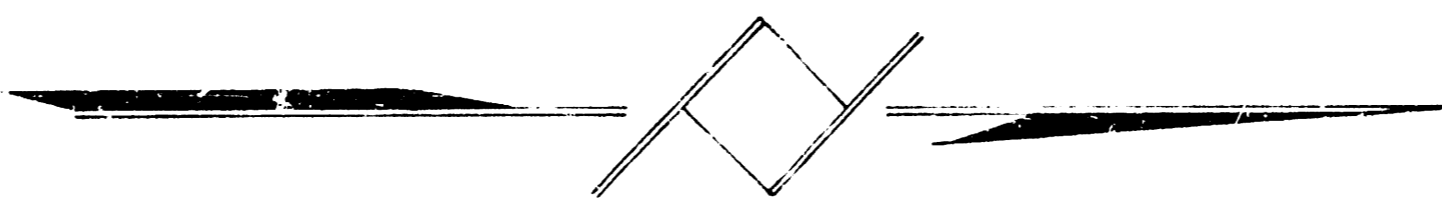
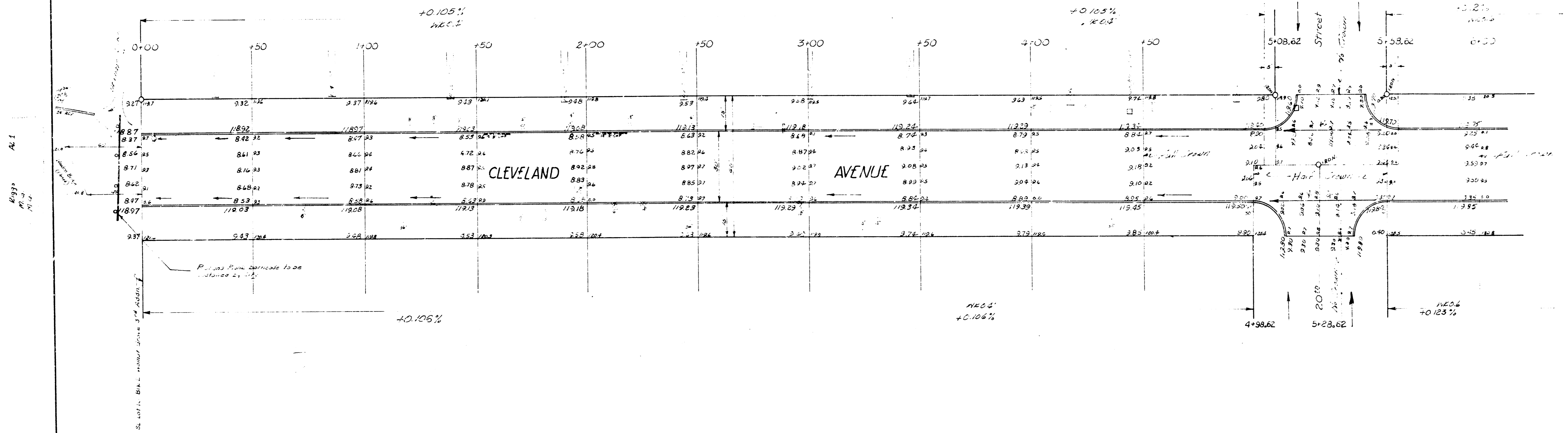


BM - 12.3 of car conc. patch no. 2021 Cleveland.
 BM - 120.56 of base Sand finish SE cor. 21st & Cleveland.



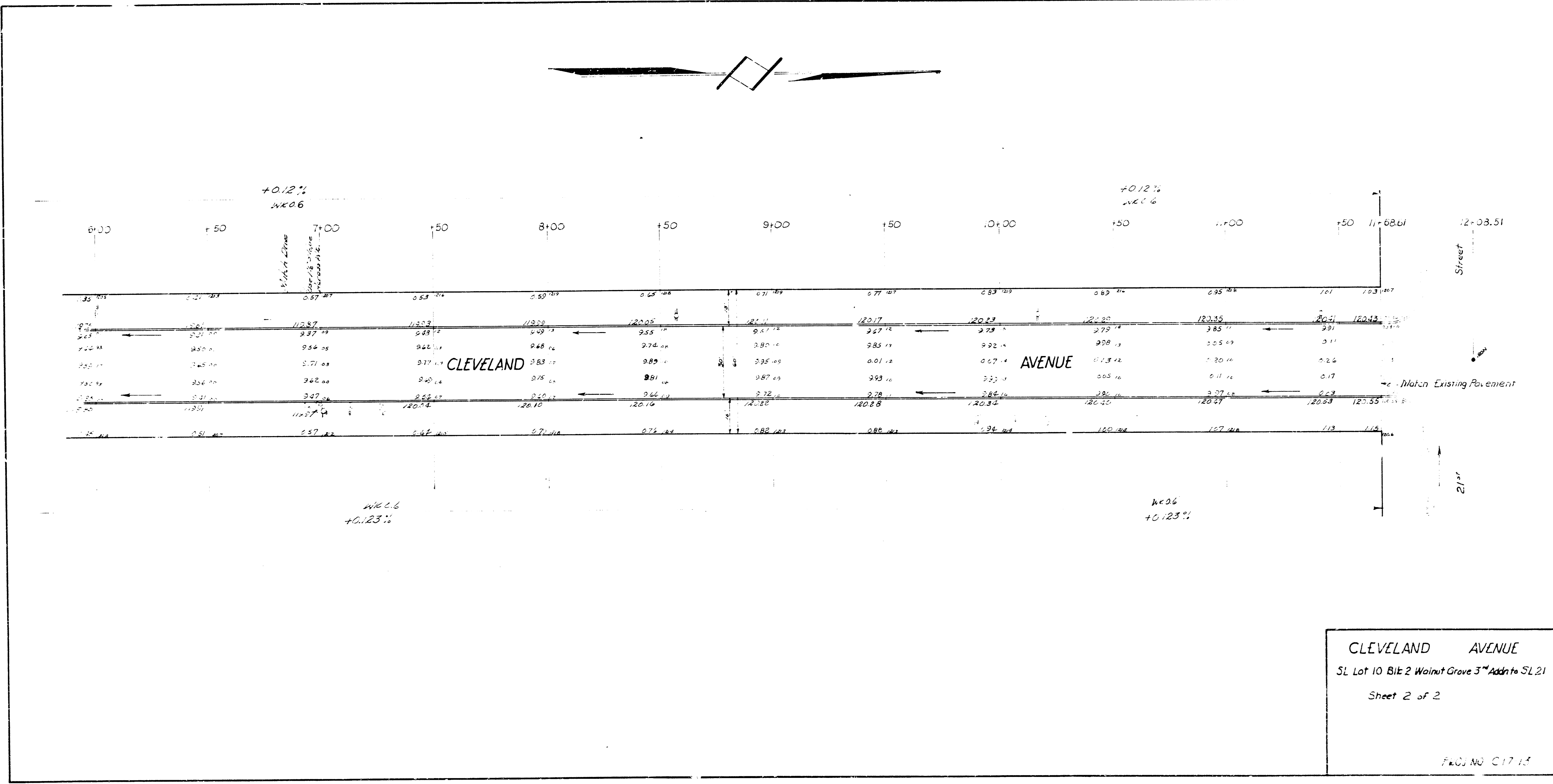
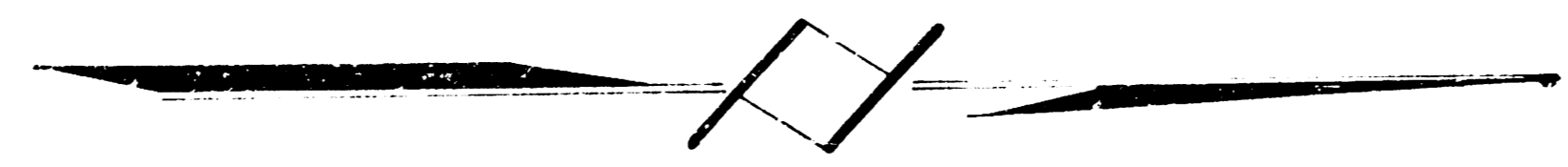
NOTICE TO CONTRACTOR:

All entrance pipes are to be disposed of in accordance with the instructions of the city solid waste.



Sheet 1 of 2.

CLEVELAND AVENUE
 SL Lot 2 Blk 10 Walnut Grove 3rd Adm to SL 21st
 30' Conc. #Cb.
 CITY OF WICHITA, KANSAS
 B. E. SMITH CITY ENGINEER
 July 1957 PROJ. NO. C-17-13



CLEVELAND AVENUE
SL Lot 10 Blk 2 Walnut Grove 3rd Addn to SL 21
Sheet 2 of 2

FIG. NO. C17.15

