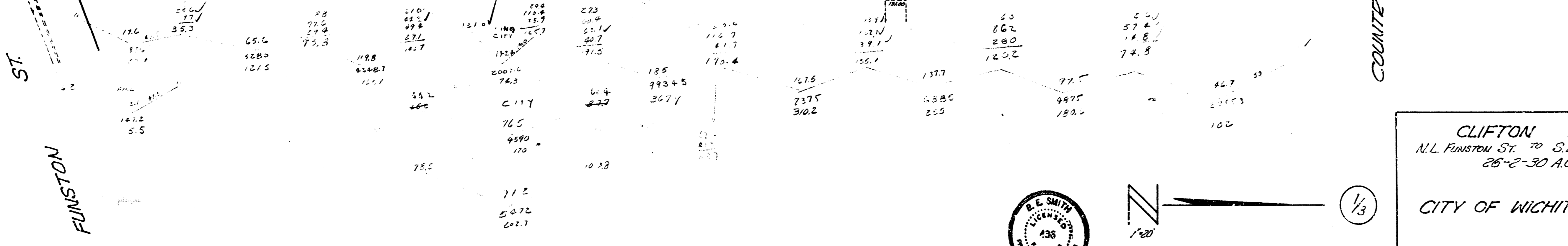
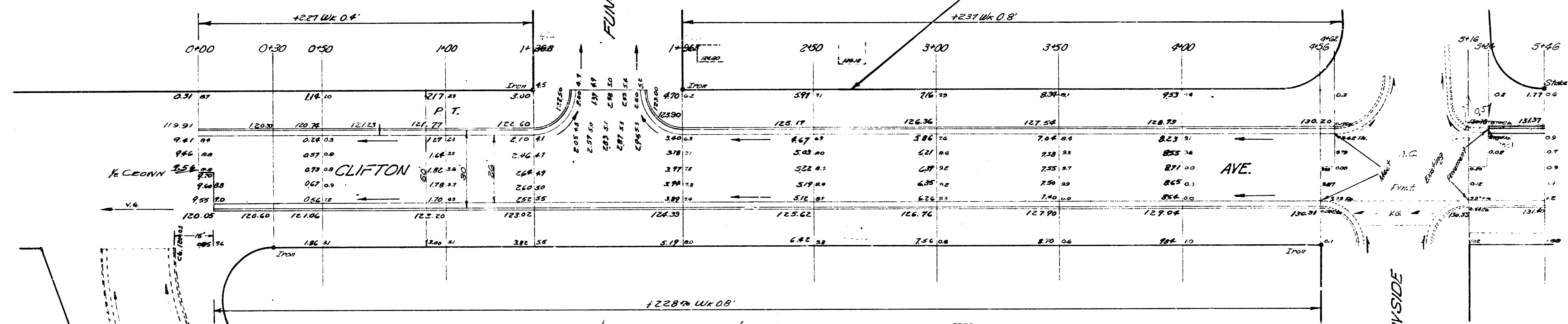


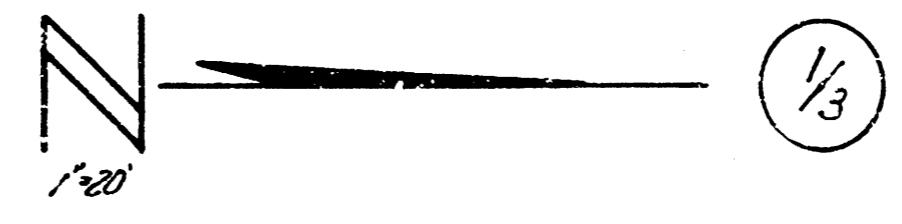
B.M. 16180 1/2" in MUELLE, Fire Hydrant, N.W. Cor. Countryside & Clifton
 B.M. 12003 2" in DITCHIE, N. curb of Funston, E.L. of Clifton
 B.M. 13100 1/2" in KING, E.S. Inter. of N.E. Countryside & Clifton

Stationing on E.L. Clifton

P.I.
 200' VC
 EL. 119.50



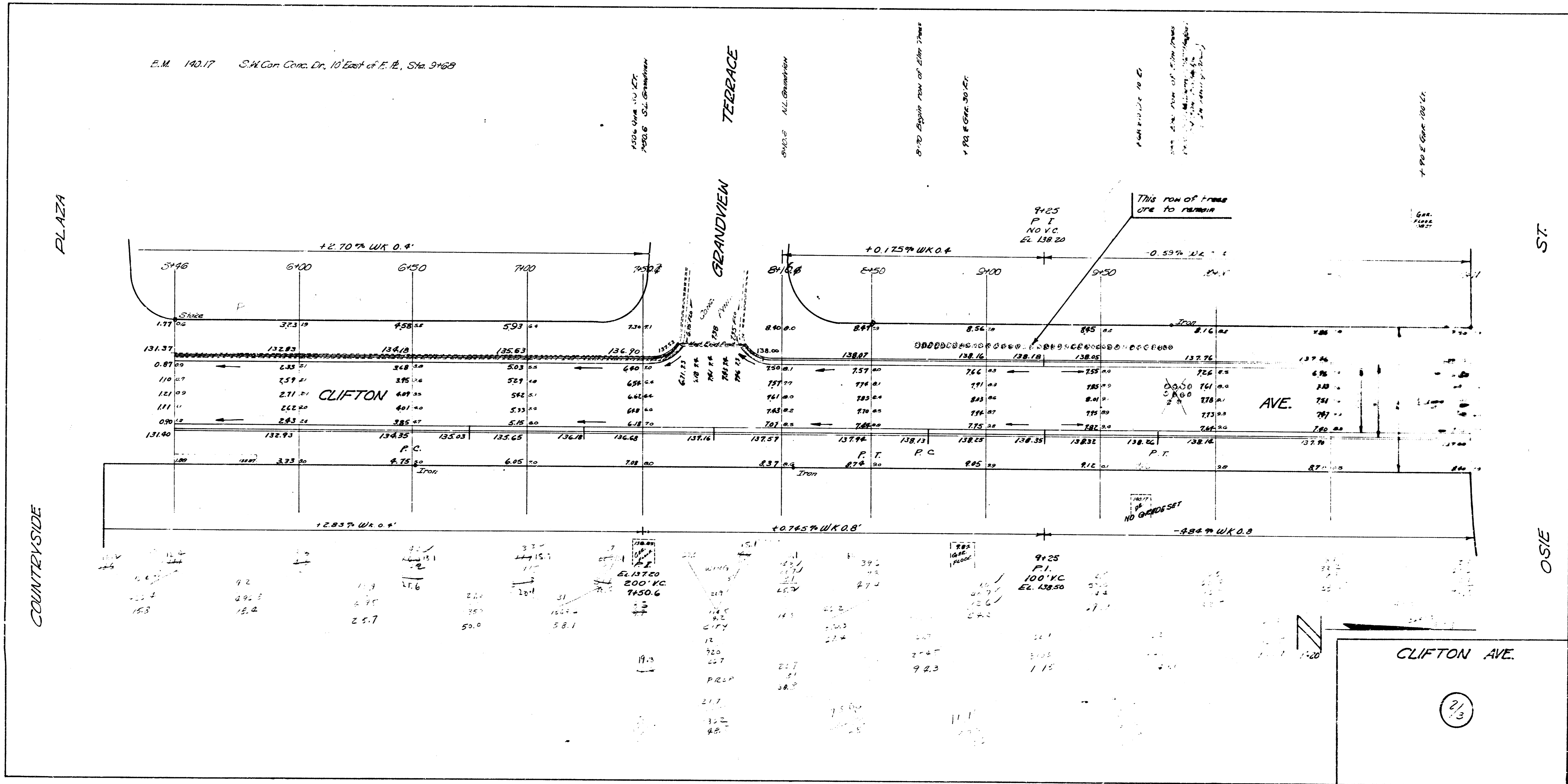
Surveyed by
 Date
 Checked by



CLIFTON AVE.
 N.L. FUNSTON ST. TO S.L. HARRY ST.
 26'-2"-30' A.C.
CITY OF WICHITA, KAN.

B.E. SMITH
 Dec. 1952
 CITY ENGINEER
 Proj. No. 02-89

E.M. 140.17 S.W. Cor. Conc. Dr. 10' East of E. B., Sta. 9+68.9



CLIFTON AVE.

(2/3)

