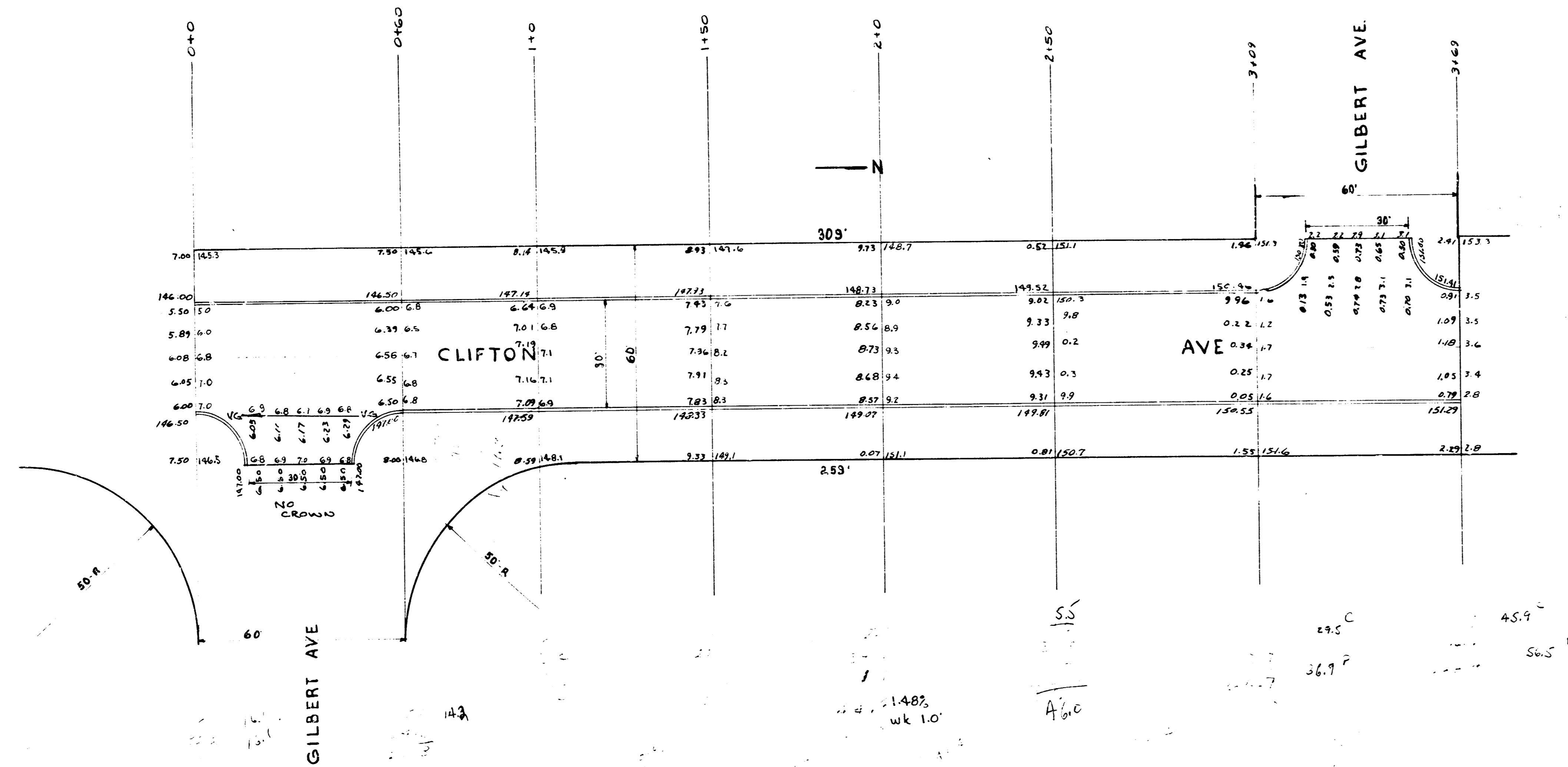


BM. 14540 End S of W.L. Clifton S Side Morris.

1.59%  
WK 1.0'



CLIFTON AVE.  
S.L. ORME TO S.L. GILBERT  
30" CONCRETE & CURB  
CITY OF WICHITA, KANS.  
L.K. WHITE CITY ENGINEER  
JAN 1947

1/2

