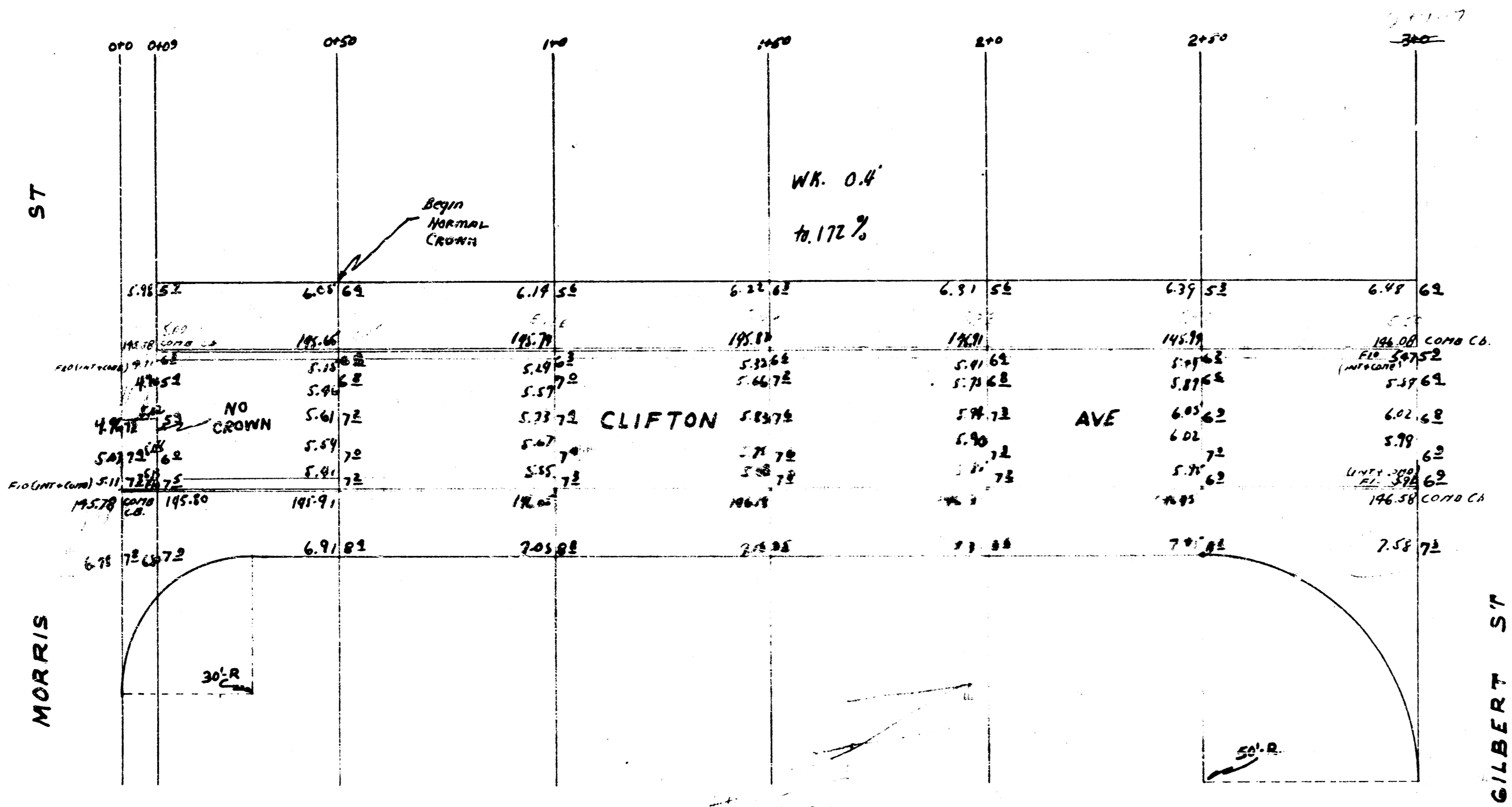
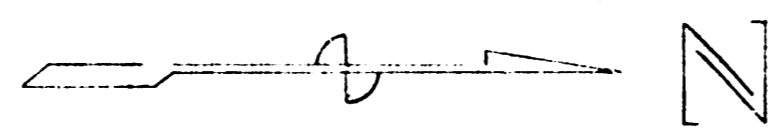


BM 195.22 Sta. 0+00 Morris, W. Clifton

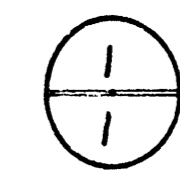


MORRIS ST

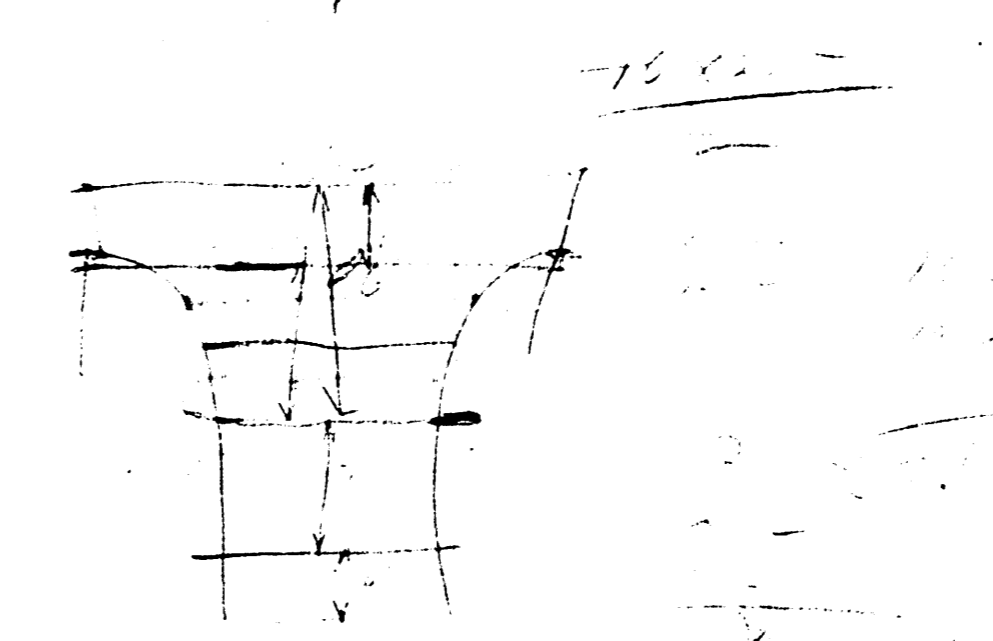
GILBERT ST

CLIFTON AVE

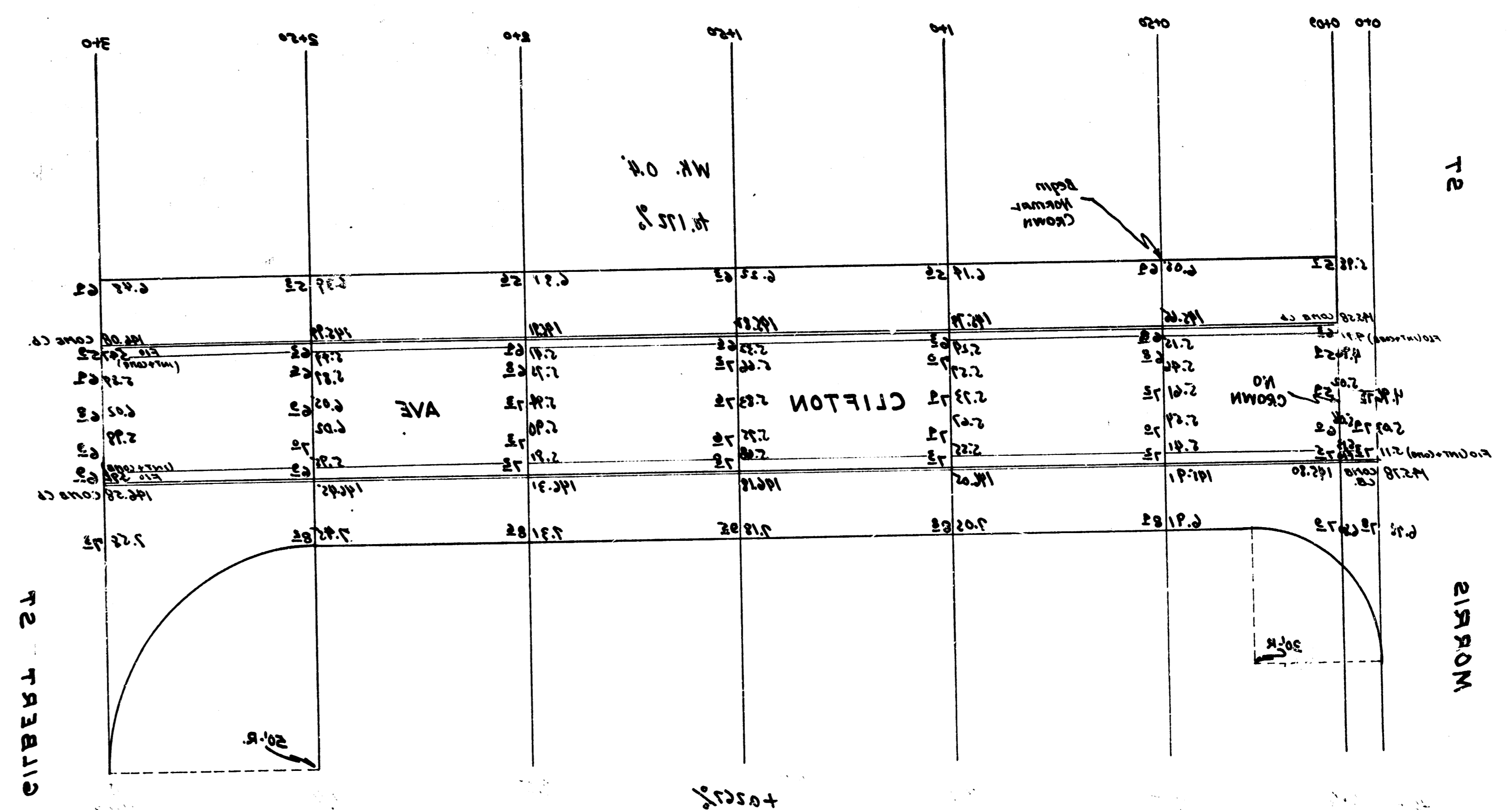
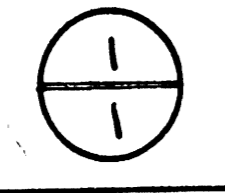
+0.267%  
WR. 10'



**CLIFTON**  
S.L. GILBERT N.L. MORRIS  
26-2-30 A. CONC.  
CITY OF WICHITA, KANSAS  
L.K. WHITE CITY ENGINEER  
JULY 1947



JULY 1947  
 J.K. WHITE CITY ENGINEER  
 CITY OF WICHITA, KANSAS  
 SE-S-30 A CONC.  
 2. L. GILBERT  
 W.L. MORRIS  
 CLIFTON



B.M. 142 2d cont. Morris, W.L. Clifton

