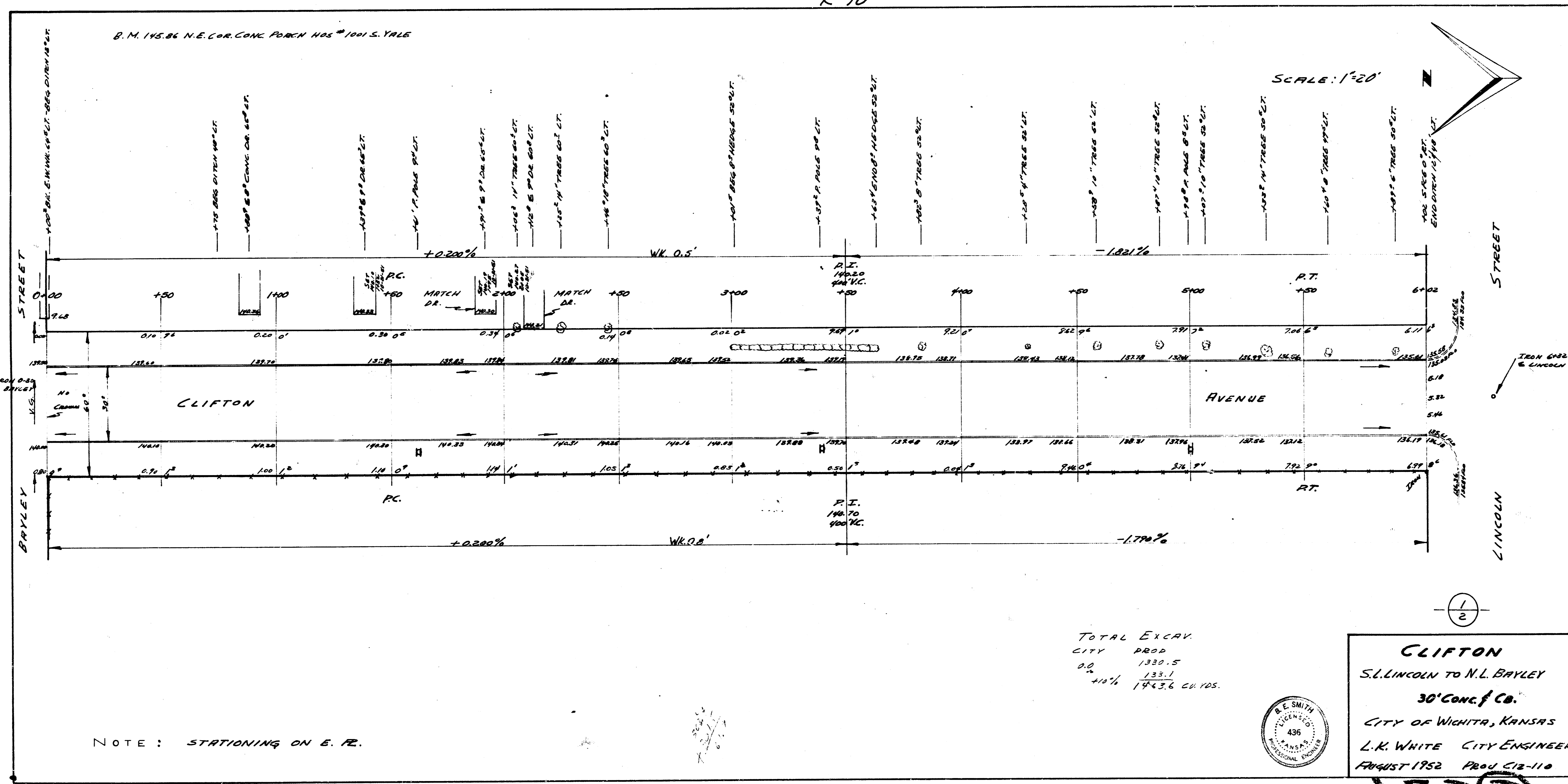


K-10



NOTE: STATIONING ON E. R.L.



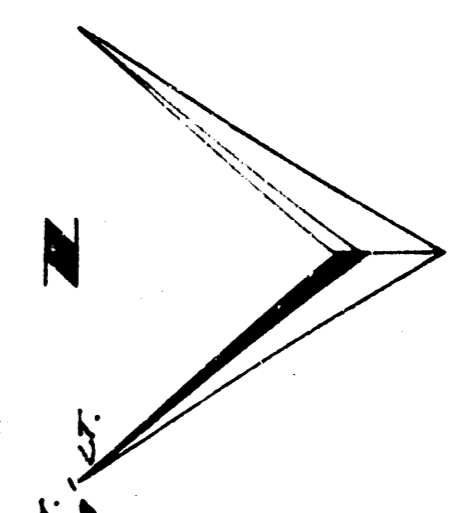
CLIFTON
 S.L. LINCOLN TO N.L. BAYLEY
 30' CONC. F. CO.
 CITY OF WICHITA, KANSAS
 L.R. WHITE CITY ENGINEER
 AUGUST 1952 PROJ. C12-110

5523

TOTAL EXCAV.
 CITY PROP. 1330.5
 O.D. 133.1
 10% 1463.6 CU. YDS.

1/2

SCALE: 1"=20'



B.M. 145.86 N.E. COR. CONC. PORCH NOS. 1001 S. YALE