

B.M. 203.14 "R" in Ritchie W. Co. Edgemoor @ S.S. Drive No. #125

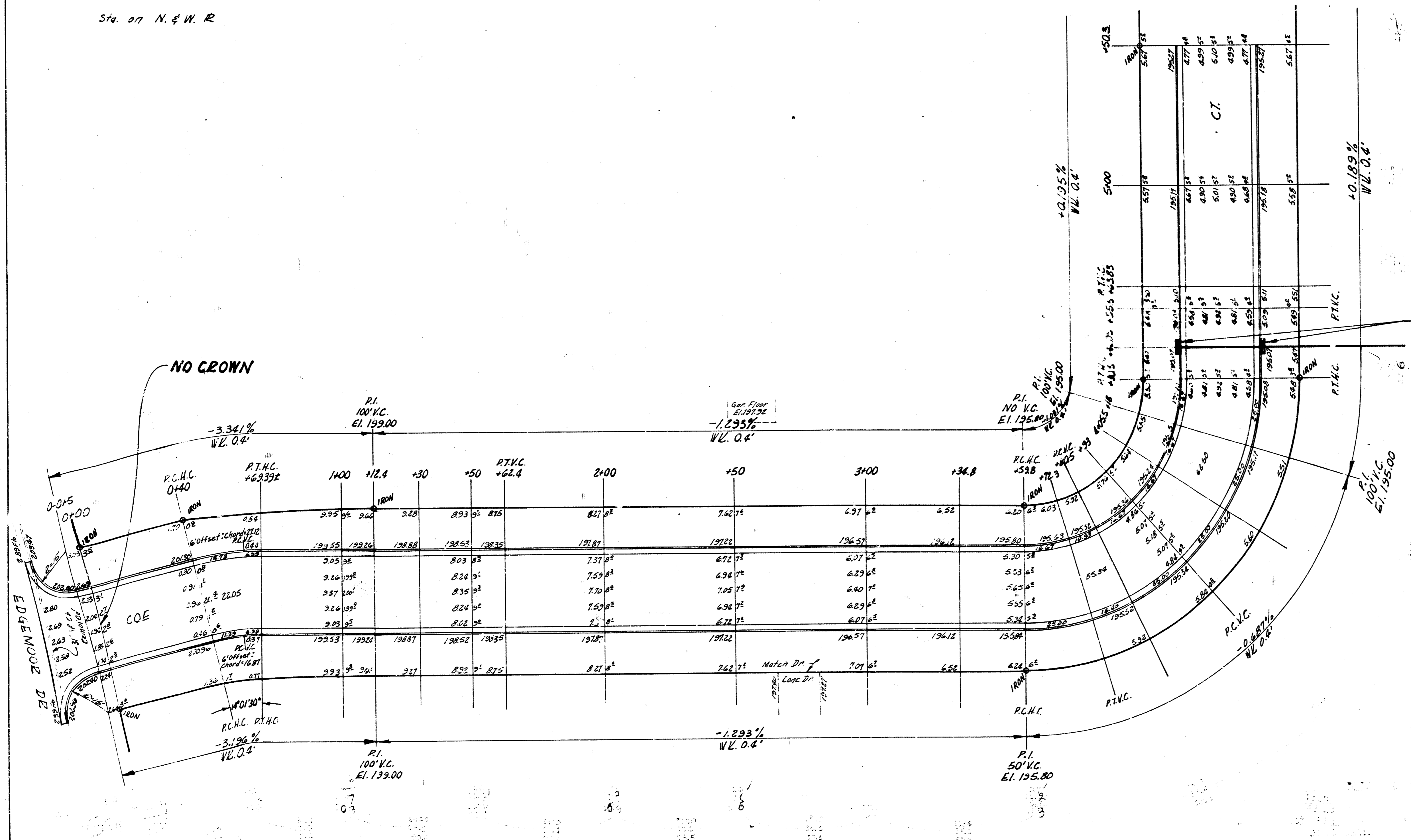
Sta. on N. & W. R.

CURVE DATA FROM STA. 3+59.8 TO STA. 4+30.5
 STA. ON N.W. R., R = 45', Δ = 83°58'

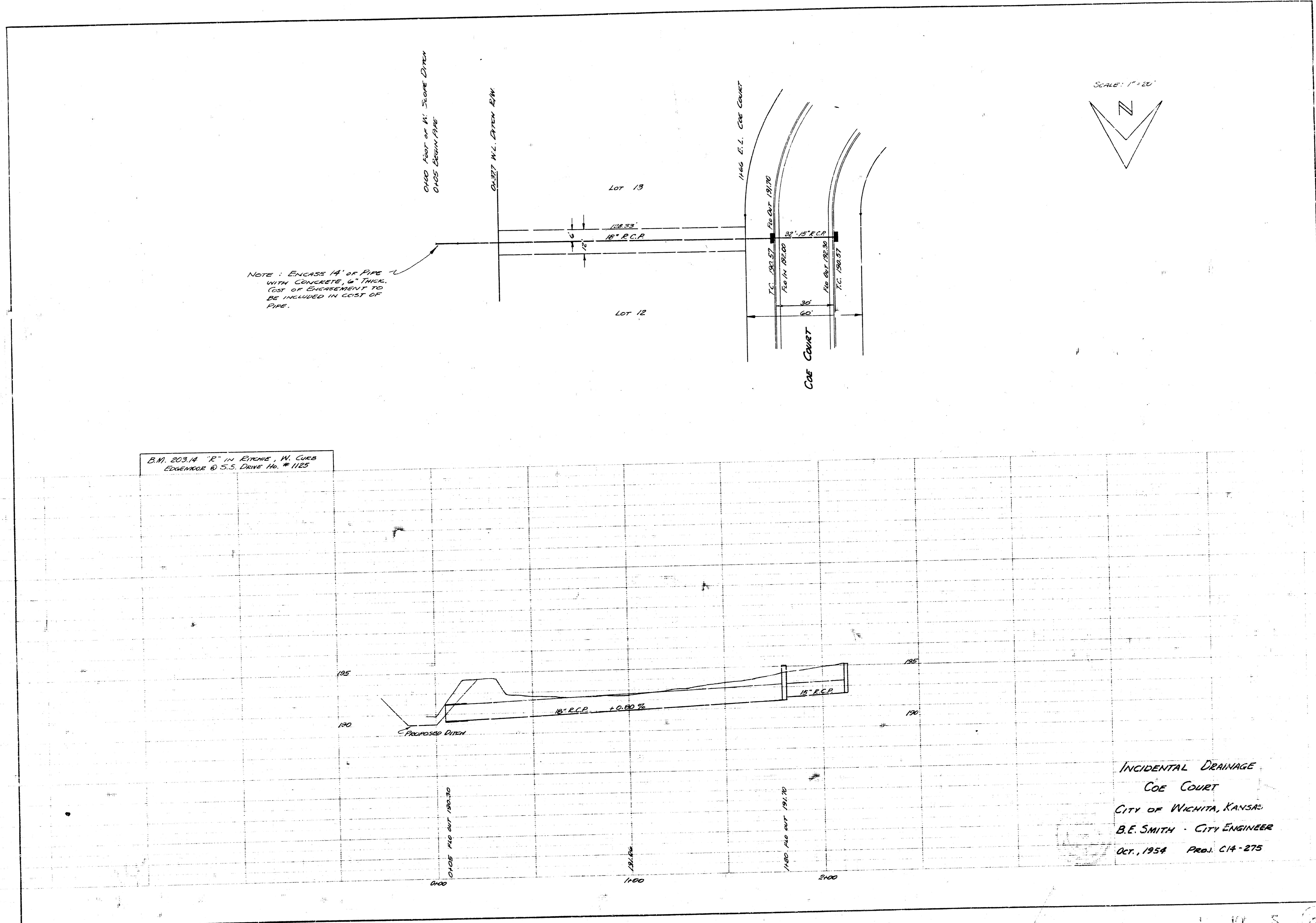
Sta	Chord Length 6' Offset N.W.C.	Chord Length 6' Offset S.E.C.	Deflection Angle	Total Deflection
3+59.8				
176.8	16.95	26.58	7°51'48"	1°52'48"
180.5	9.85	17.48	5°18'12"	7°10'40"
292	14.95	26.58	7°51'48"	15°02'28"
402.5	14.95	26.58	7°51'48"	22°54'16"
418	14.95	26.58	7°51'48"	30°46'04"
430.5	14.95	26.58	7°51'48"	38°37'52"

PROPOSED 8'x5' C.B.'s

PROPOSED 18" E.C.P. TO DRAINAGE DITCH

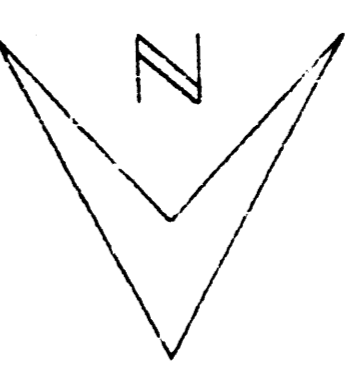


COE CT.
 E.L. EDGEMOOR DR. TO
 N.L. LOT 10, BLK. 2, M'EWEN 2ND ADDN
 26-2-30 A.C.
 CITY OF WICHITA, KANS.
 B.E. SMITH CITY ENGINEER
 OCT., 1954 PROJ. NO. C14-275



NOTE: ENCASE 14' OF PIPE WITH CONCRETE, 6" THICK. COST OF CONCREMENT TO BE INCLUDED IN COST OF PIPE.

SCALE: 1" = 20'



B.M. 203.14 "R" IN ELEVATION, W. CURB EDGEMOOR @ S.S. DRIVE No. # 1125

INCIDENTAL DRAINAGE
 COE COURT
 CITY OF WICHITA, KANSAS
 B.E. SMITH - CITY ENGINEER
 OCT., 1954 PROJ. C14-275