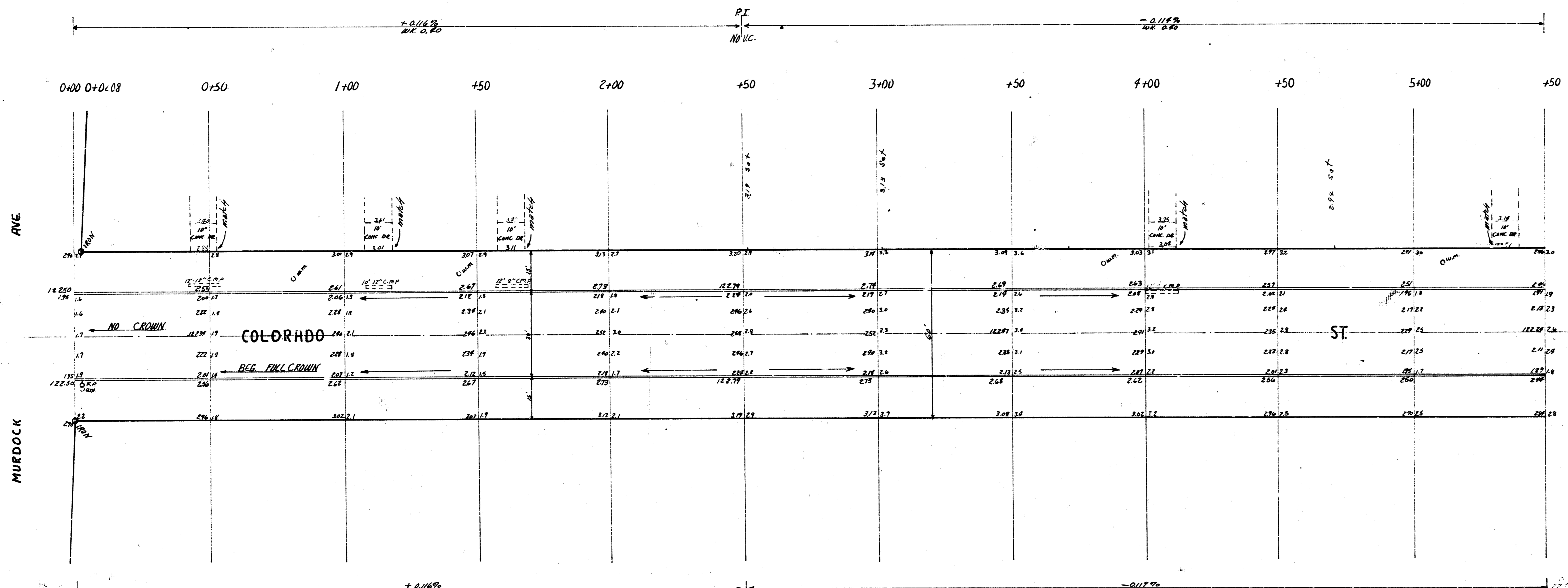
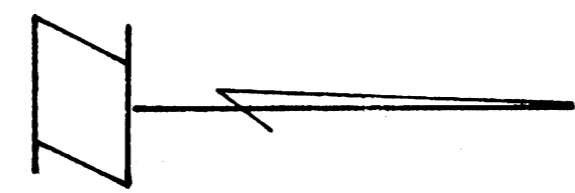
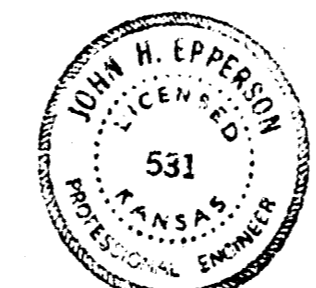


B.M. 125.486 S.E. COR. CONC. PORCH HO. # 801 N. COLORADO
 B.M. 121.822 "+ TOP OF CB. CTR. RADIUS S.W. COR. COLORADO & 9TH
 BASE LINE ON E



NOTE TO CONTRACTOR:
 ALL ENTRANCE PIPES ARE TO BE DISPOSED OF
 IN ACCORDANCE WITH INSTRUCTIONS OF CITY/DIRT CHECKER

TOTAL EXCAV.
 PROP. CITY
 722.4
 112.2
 810.2
 17.8' x 24" x 24"



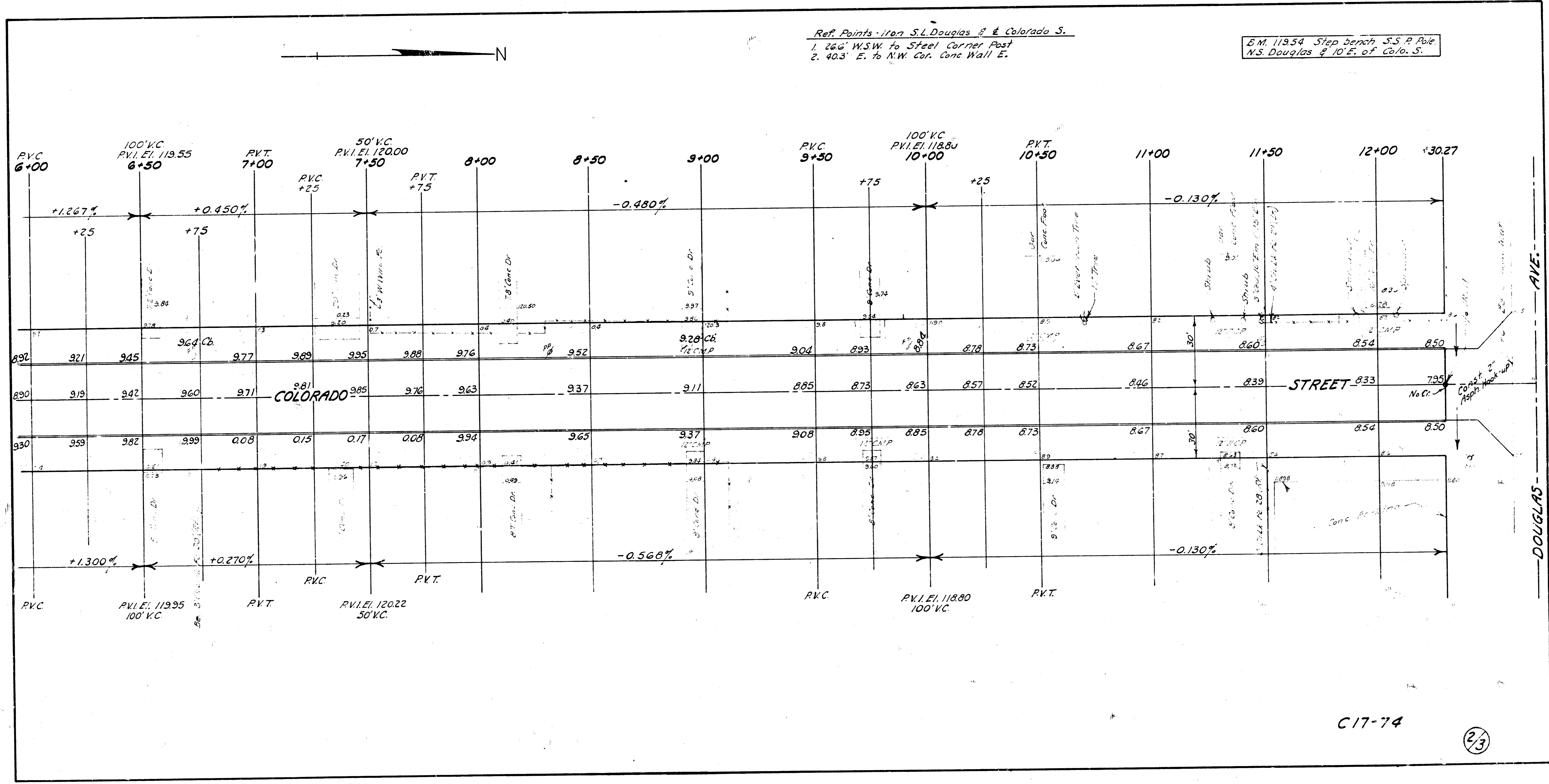
COLORADO ST.
 N.L. MURDOCK - S.L. 9TH
 30 CONC. & CB.
 CITY OF WICHITA, KANS.
 B.E. SMITH CITY ENGINEER
 DATE June 1, 1939 PROJ NO C.16-9

1/2



Ref. Points from S.E. Douglas & Colorado S.
1. 26' W.S.W. to Steel Corner Post
2. 40.3' E. to N.W. Cor. Conc. Wall E.

E.M. 11954 Step Depth S.S. P. Pole
N.S. Douglas & 10' E. of Colo. S.



C17-74

23