

STREETS IN COMOTARA INDUSTRIAL PARK

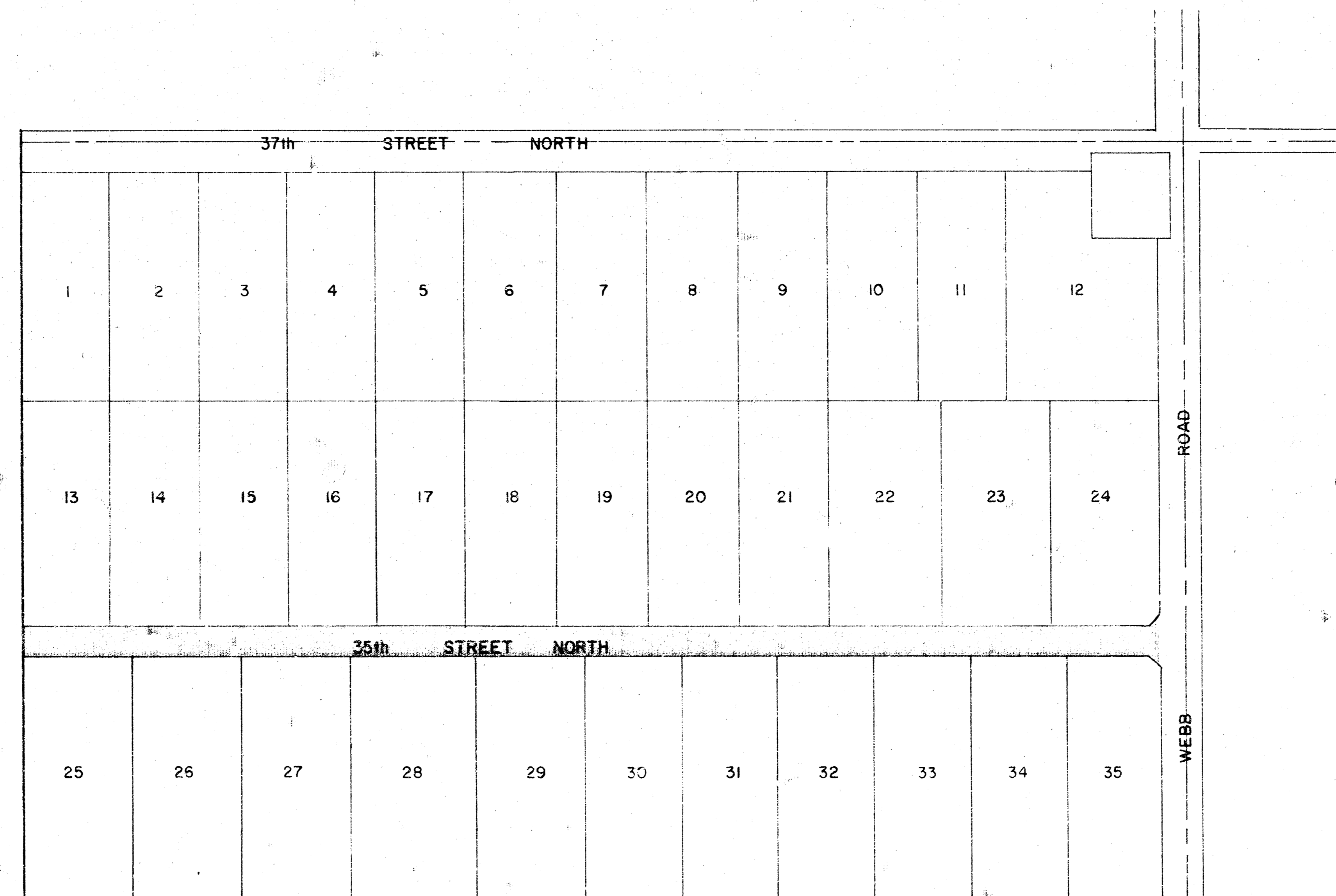
FOURTH ADDITION

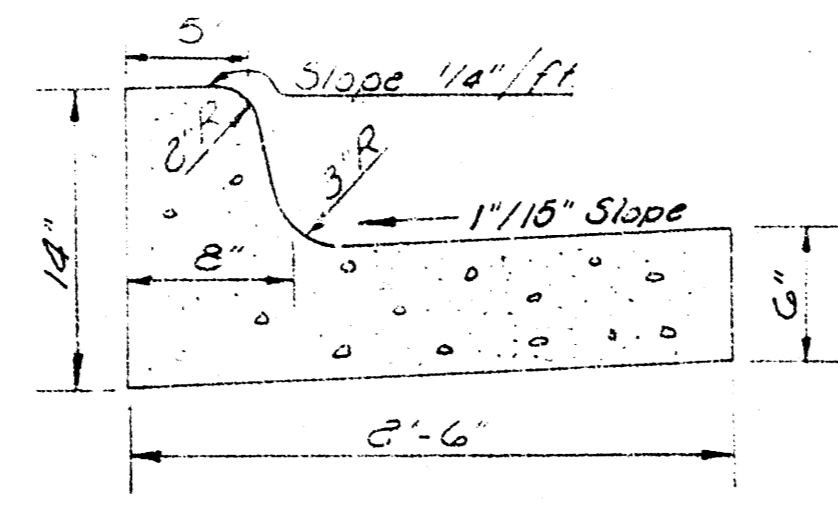
PROJECT NO.
472-76-245-80762-000-000-001

CITY OF WICHITA, KANSAS
R.W. LINN CITY ENGINEER
DECEMBER 1978

35TH STREET NORTH - E. L. COMOTARA INDUSTRIAL
PARK 2ND ADDITION TO W. L. WEBB ROAD

SHEET NO.	DESCRIPTION
1	TITLE SHEET
2	TYPICAL SECTIONS
3-7	PLAN PROFILE 35TH ST. N.
8-13	GRADING CROSS SECTIONS

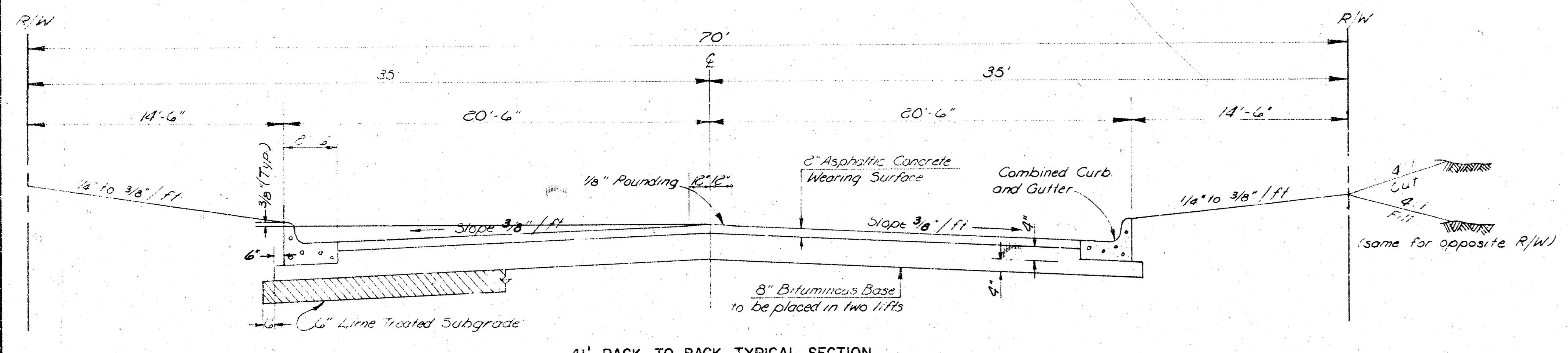




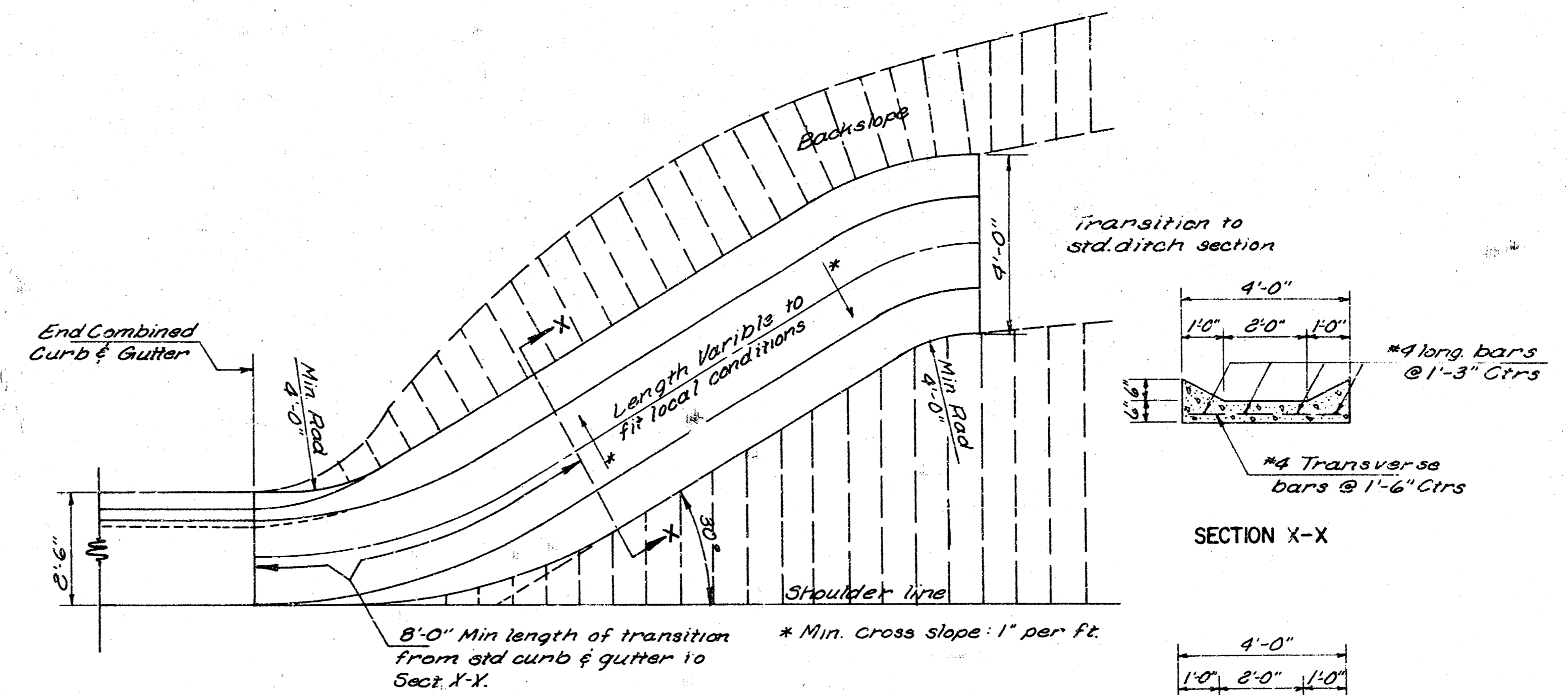
COMBINED CURB AND GUTTER

GENERAL NOTES

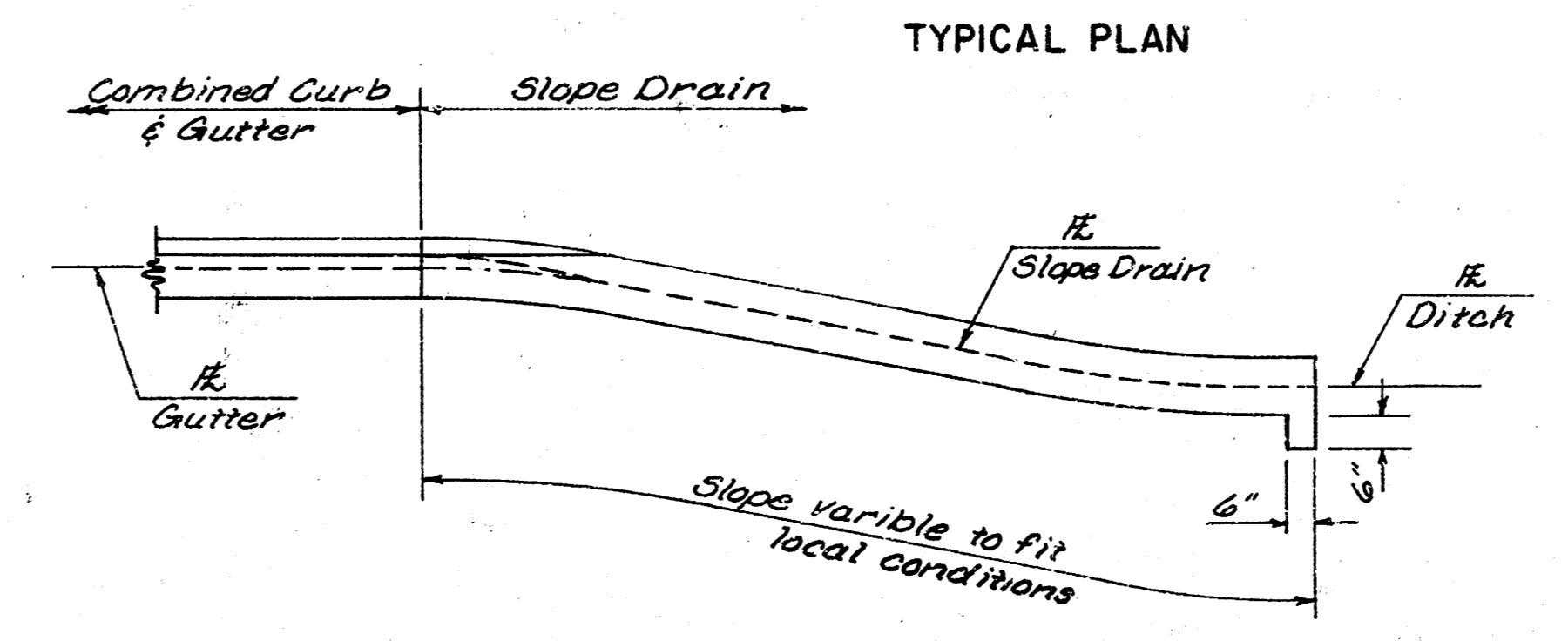
1. A Tack Coat of Emulsified Asphalt (SS - 1H) shall be applied at an approximate rate 2.55 gallons per square yard between lifts of asphaltic materials when ordered by the Engineer. Tack coat will not be paid for directly and shall be considered as subsidiary to price bid for Asphaltic Pavement.
Bituminous Base and Asphaltic Concrete Wearing Surface shall be placed with a tandem machine having automatic electronic controls for crown and grade. Construction joints in each lift shall be staggered a minimum distance of 1 foot with joints in preceding lifts and such that a joint will be constructed on the pavement centerline in the top lift.
2. The A.C. Pavement between combined curb and gutter shall be paid as square yards 10" A.C. Pavement (8" Bituminous Base). The Bituminous Base under the combined curb and gutter shall be paid as square yards 4" Bituminous Base.



41' BACK TO BACK TYPICAL SECTION

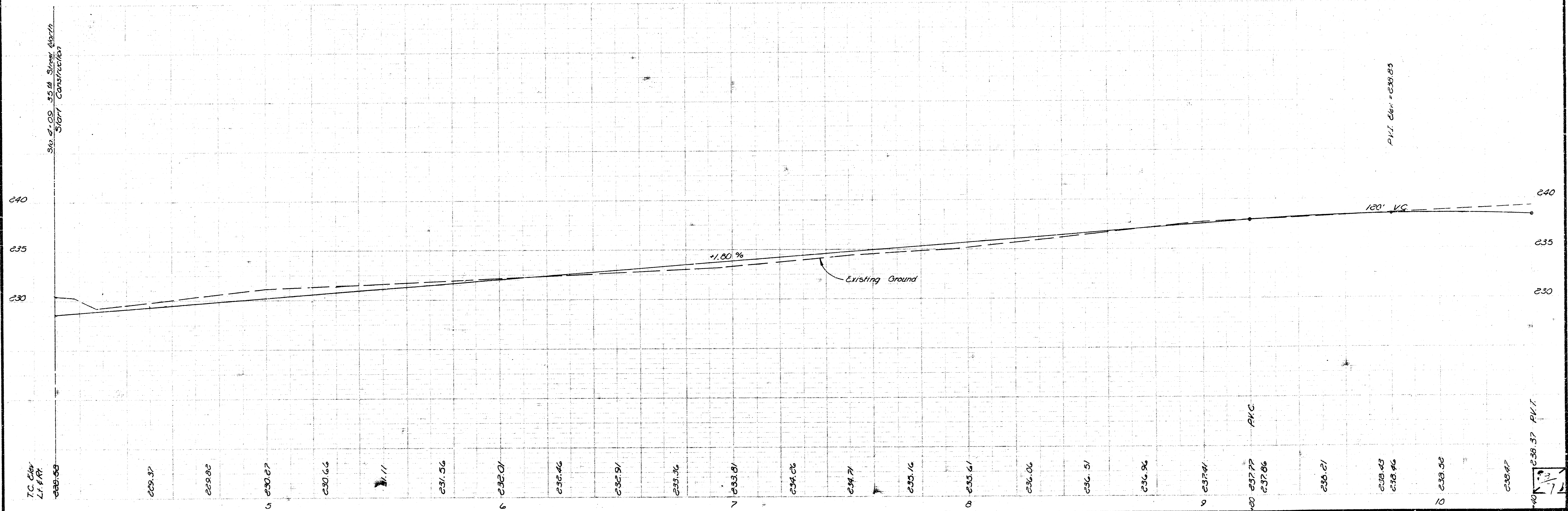
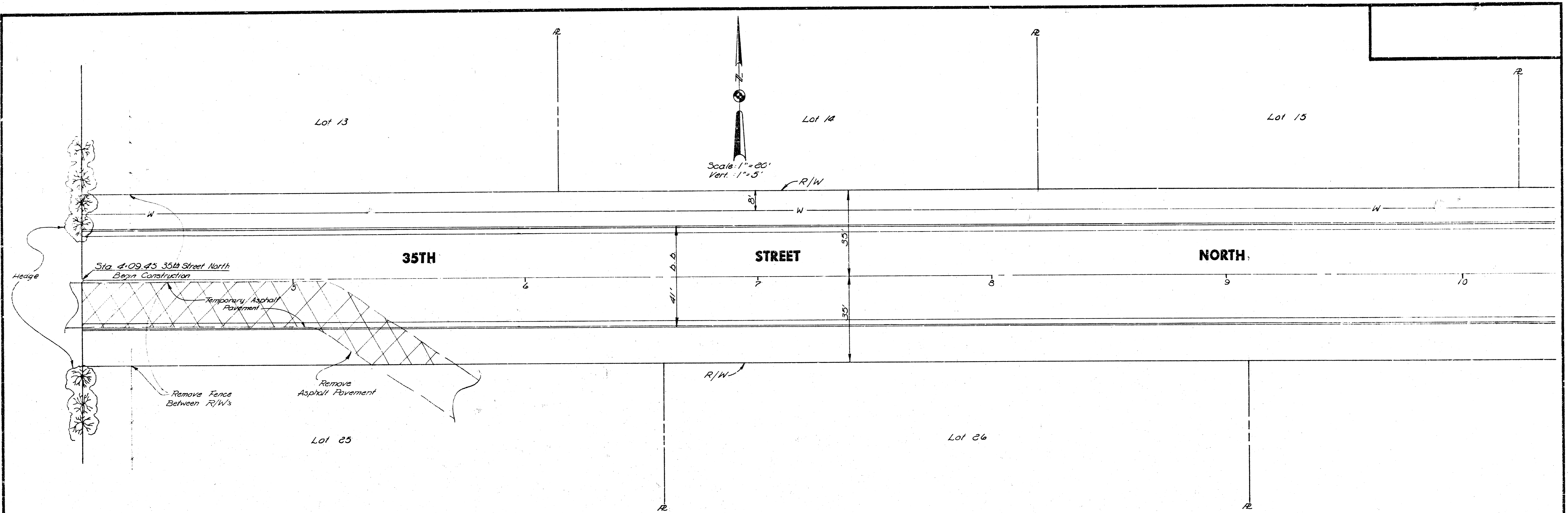


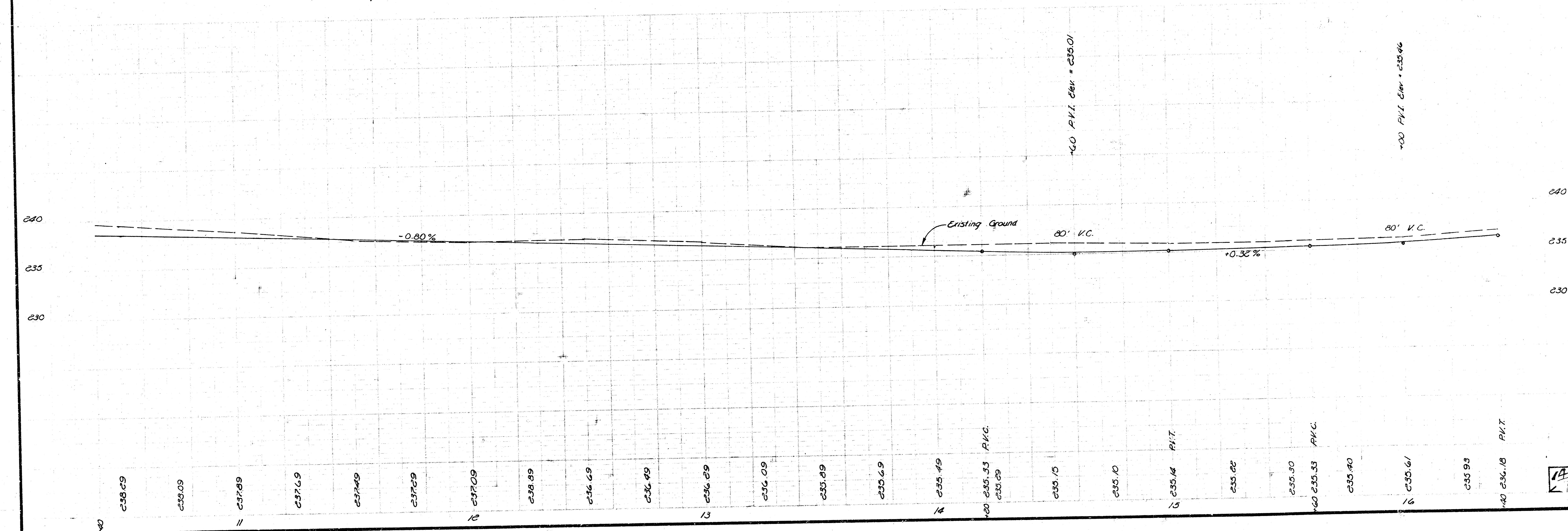
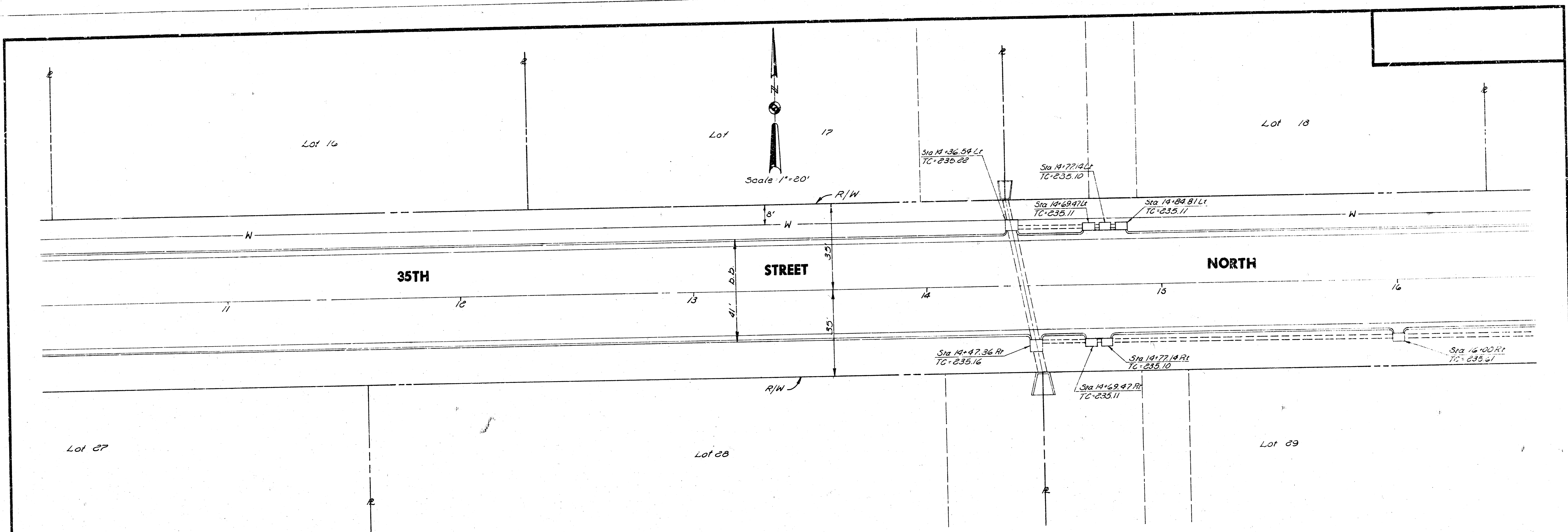
SECTION X-X

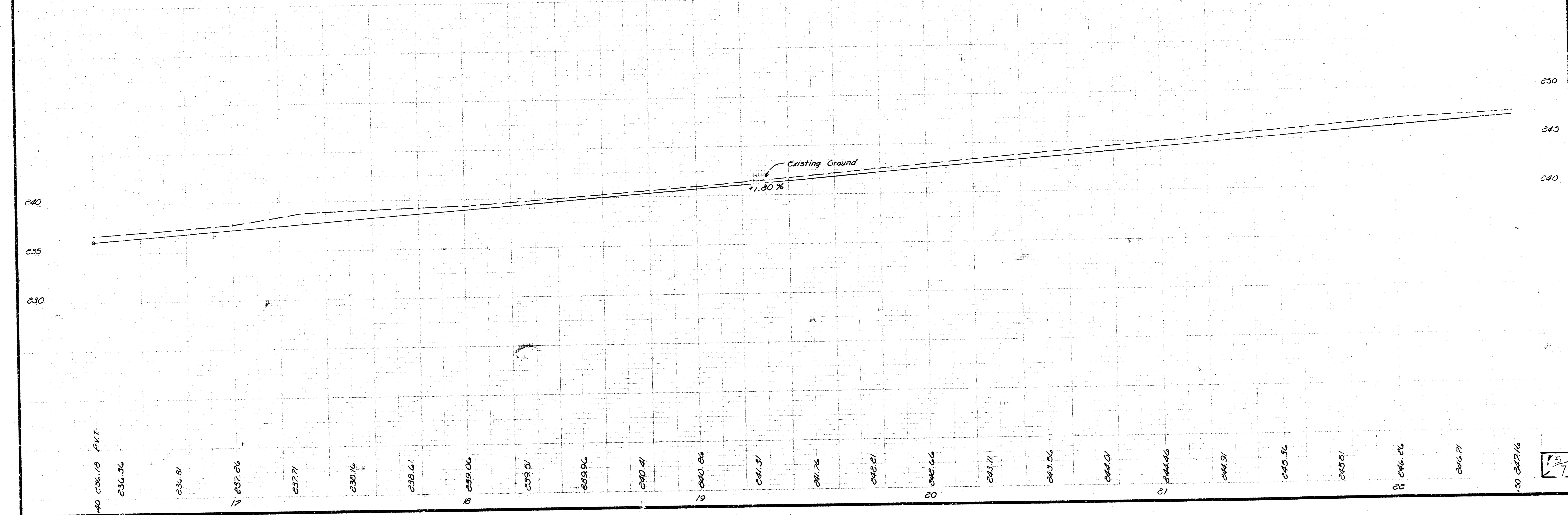
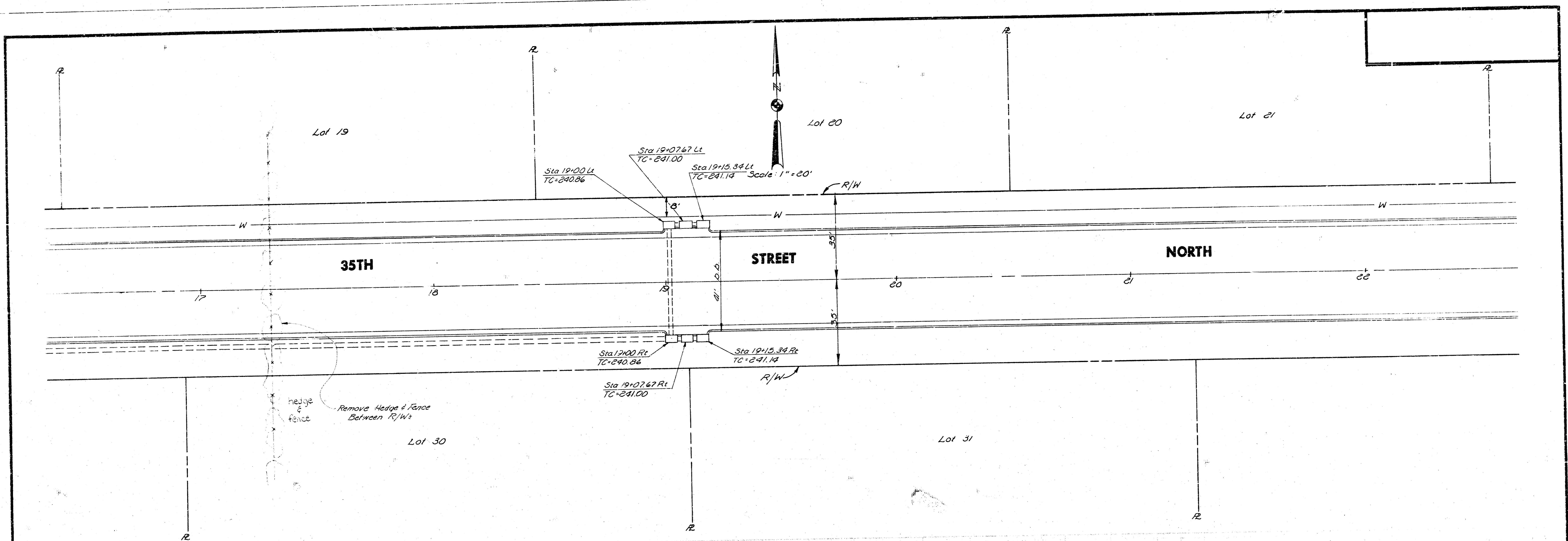


TYPICAL ELEVATION SLOPE DRAIN

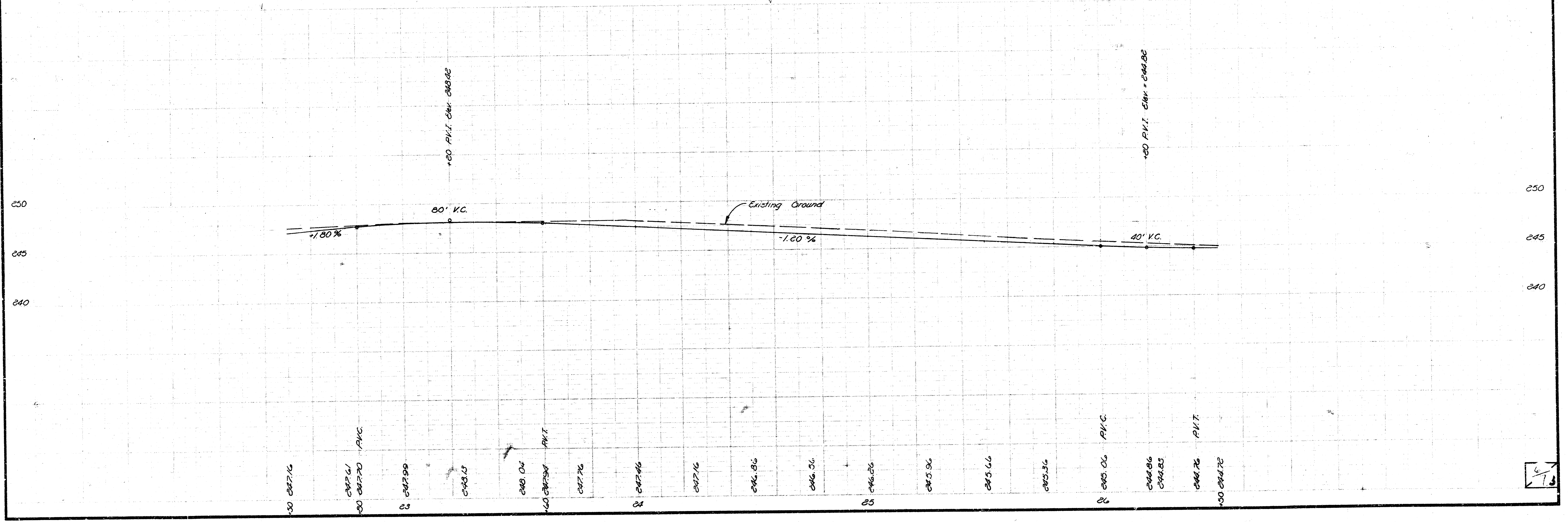
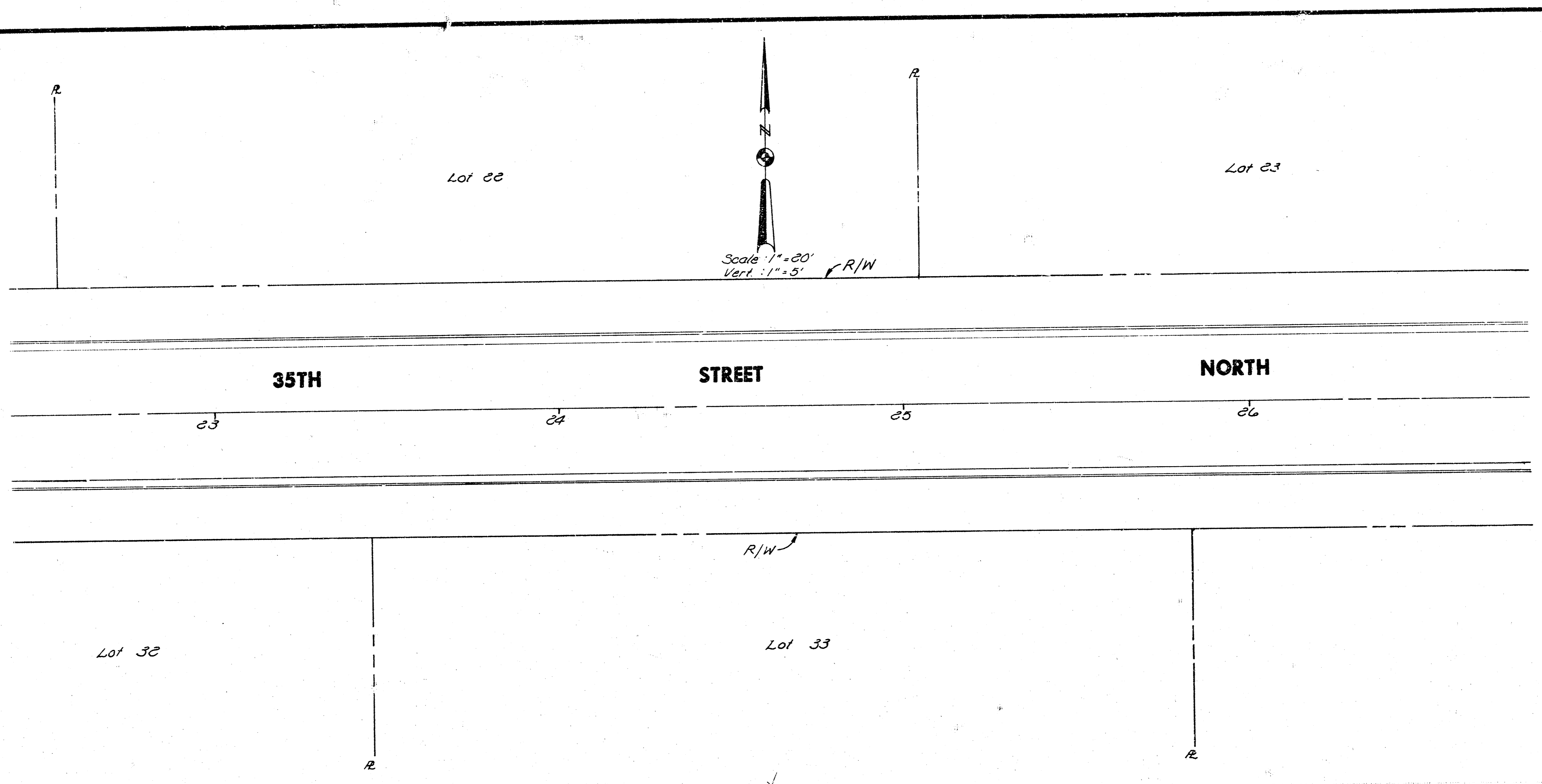
Note: Use Class "A" AE thruout. The entire area of the Slope Drain below the curbs, to be poured and struck off with a uniform thickness of 6". The curbs are to be applied in the same manner and using the same methods as for edge curb. Reinforcing steel to be deformed #4 bars.



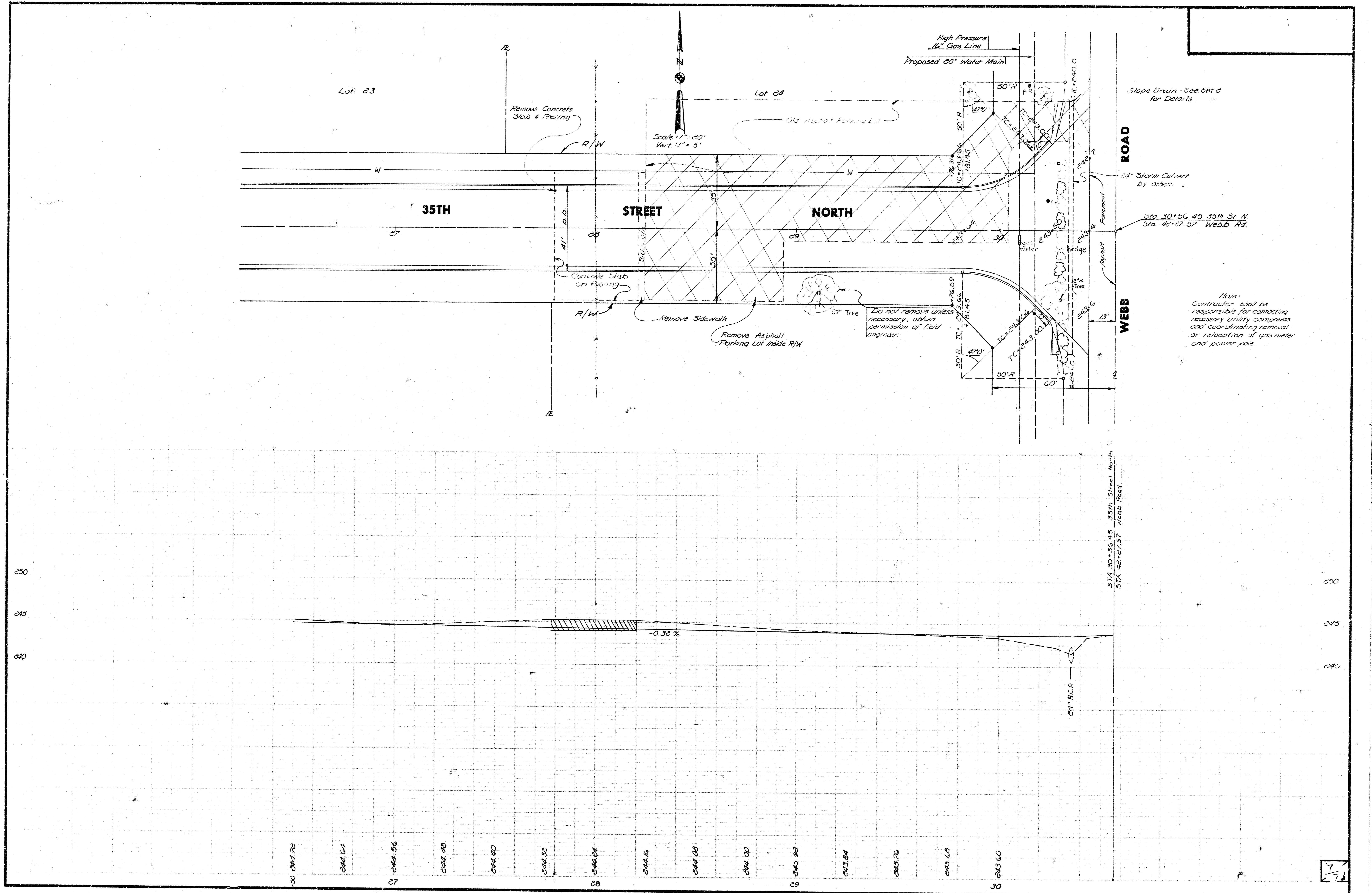




15
7



1/3



Lot 23

Lot 24

35TH

STREET

NORTH

ROAD

WEBB

Slope Drain - See Sht 2 for Details

64" Storm Culvert by others

Sta. 30+56.45 35th St. N

Sta. 42+27.57 Webb Rd.

Note:
Contractor shall be responsible for contacting necessary utility companies and coordinating removal or relocation of gas meter and power pole

% 2.50-

Sta. 30+56.45 35th Street North
Sta. 42+27.57 Webb Road

240 245 250
 240.72 241.64 242.56 243.48 244.40 245.32 246.24 247.16 248.08 249.00 249.92 250.84 251.76 252.68 253.60

7/2