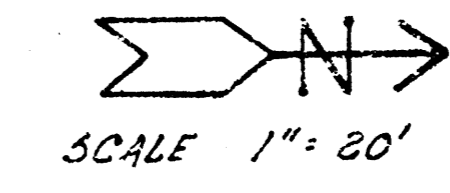
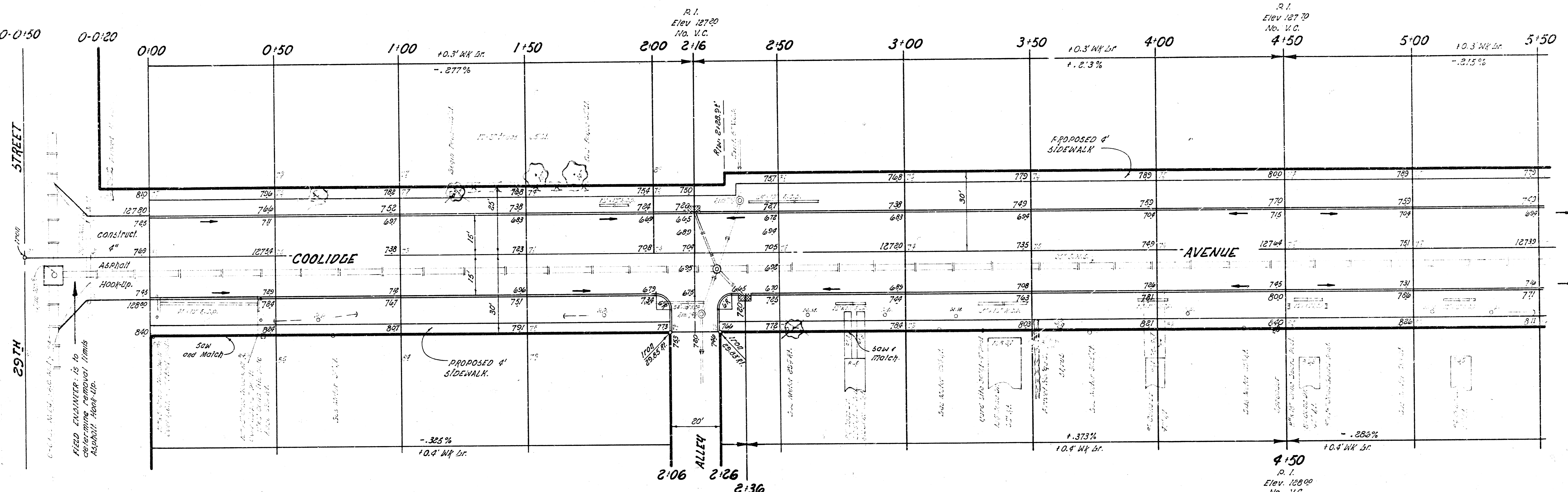


B.M. 12345 Top N.W. Salt in Base U-Haul Rental Sign 40' East of COOLIDGE 150' N. & 29TH STREET.



BASE LINE IS ON CENTER LINE

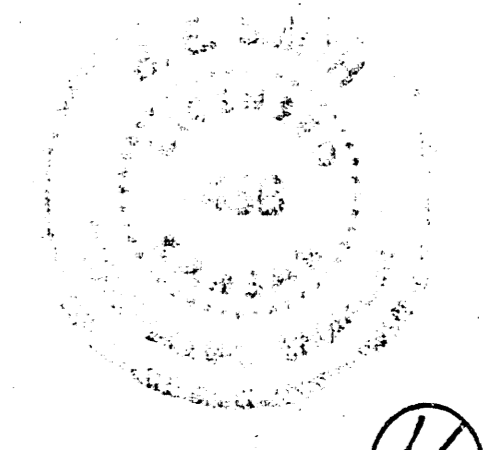


-STEEL-
NOTE: See Sheet 4 for steel Pattern on East 1/2 COOLIDGE 0+00 to 1+52.

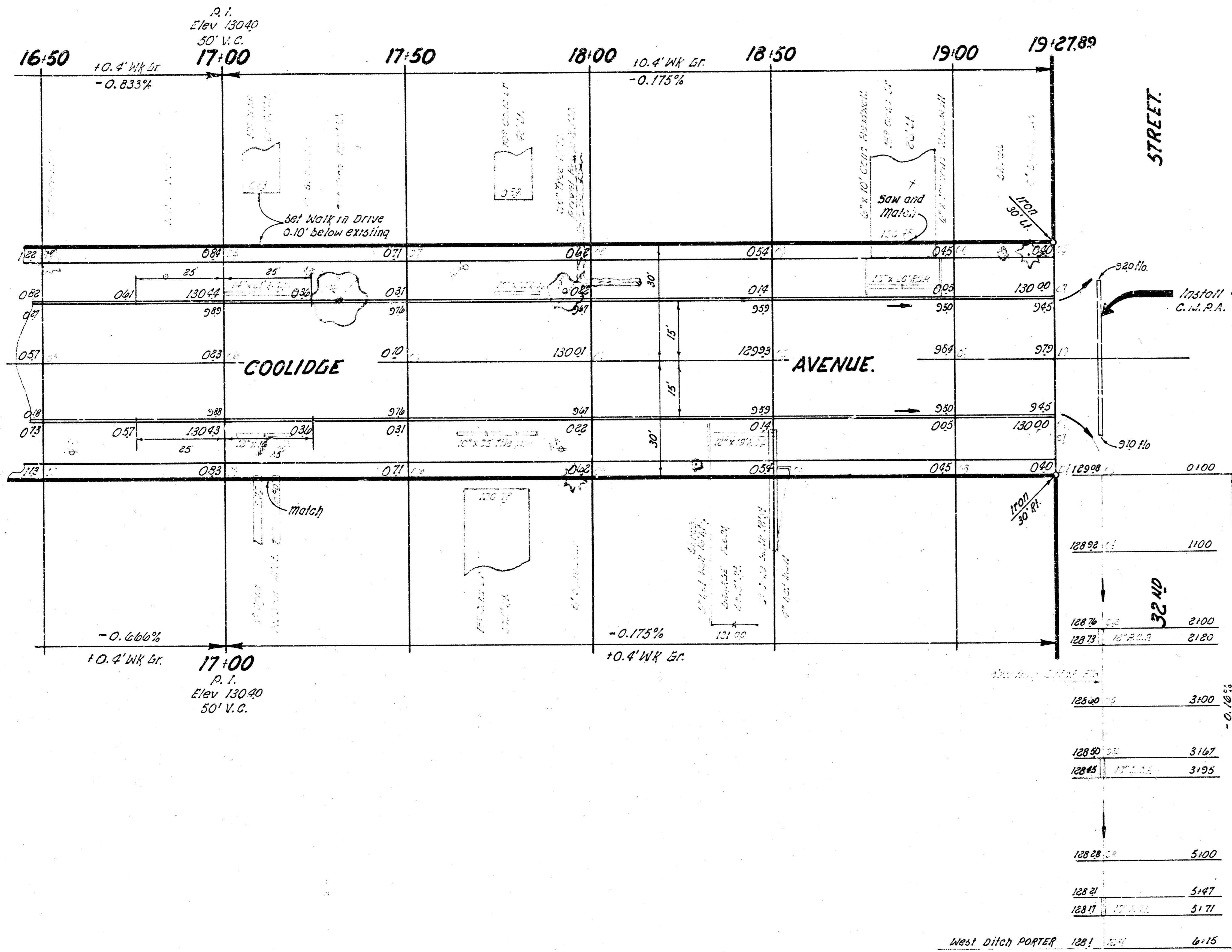
EARTHWORK			
PROPERTY		CITY	
EXCAVATION	COMP FILL	EXCAVATION	COMP FILL
2,433.2 Cu yds	15.6 Cu yds	182.5 Cu yds	0.7 Cu yd
+10% 243.3	+10% 1.6	+10% 18.3	+10% .07
2,676.5 Cu yds	17.2 Cu yds	200.8 Cu yds	1.0 Cu yd.

NOTE: 13rd Item lined feet pipe removed is to include Headwall Removal.

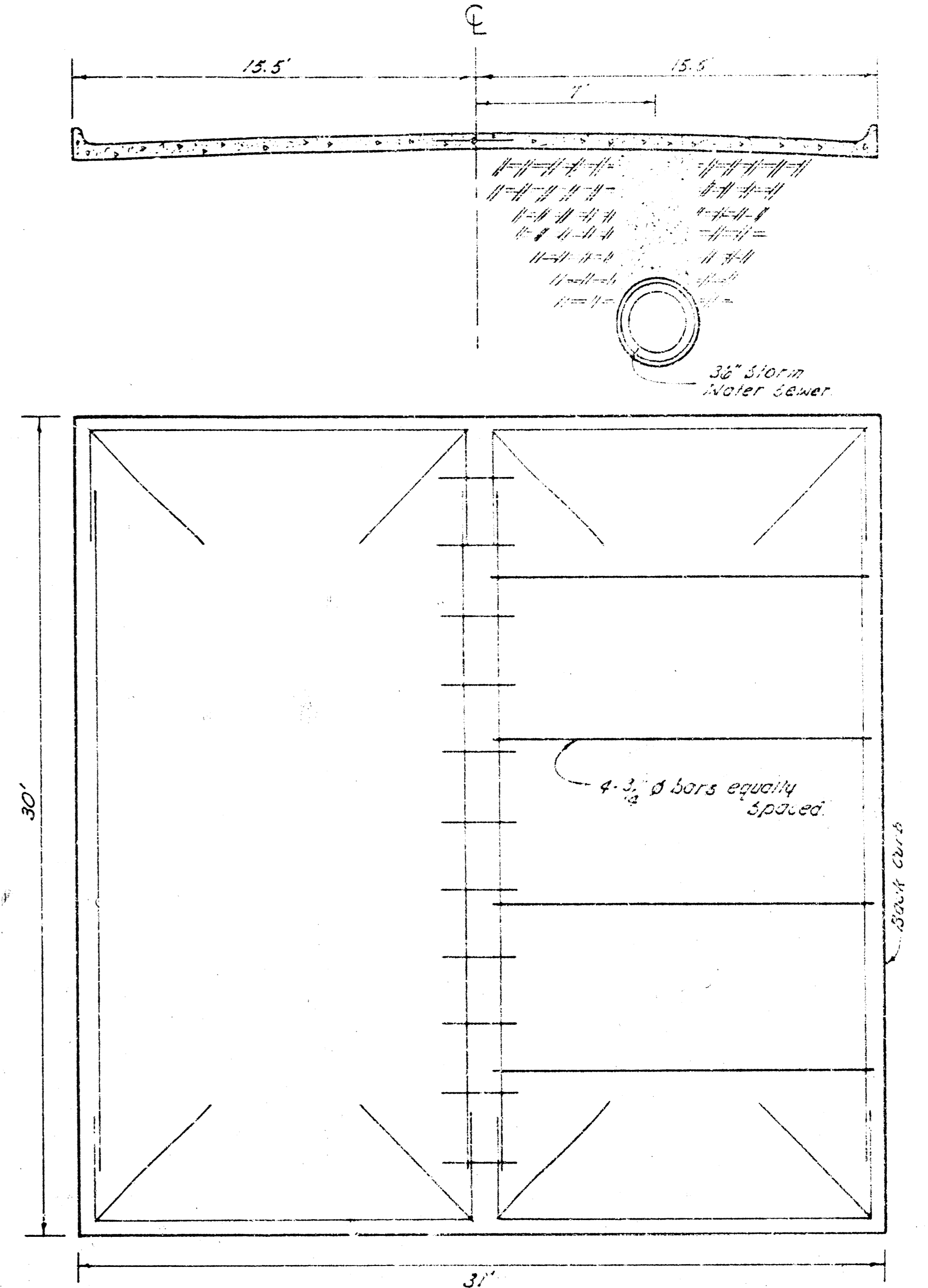
-SIDEWALK-
Grade parking and clear Right of Way for proposed sidewalk. Compact backfill in sidewalk area. SIDEWALK to be Constructed by "OTHERS".



COOLIDGE AVENUE.
N.L. 29TH STREET to S.L. 32ND STREET No.
30' CONC and CURB
CITY of WICHITA, KANSAS
B.E. SMITH CITY ENGINEER
DATE Oct. 1955 PROJ No. 017-76

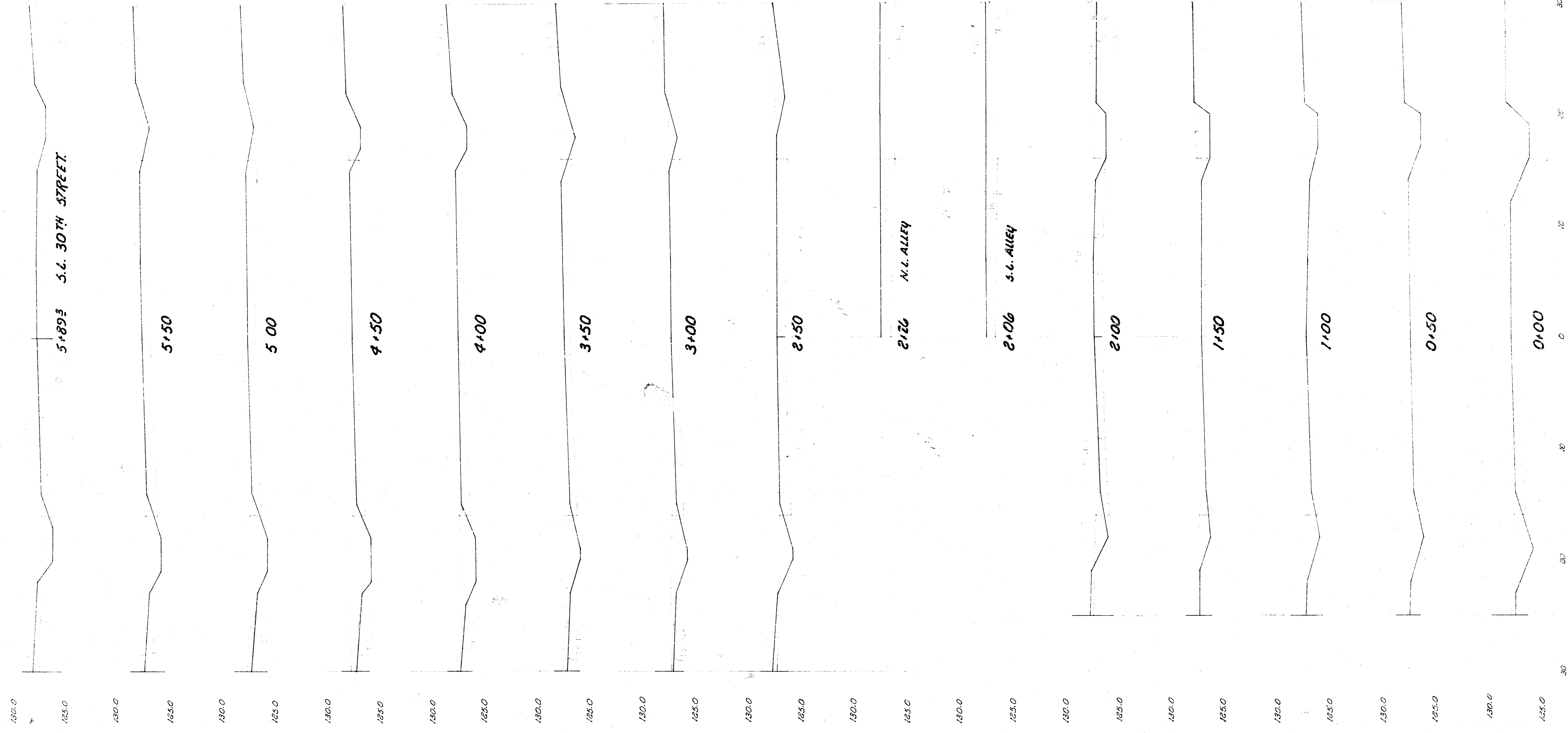


DITCHING
 Cut Ditch to elevations shown and adjust entrance pipes to match.
 Bid Price: Lineal feet ditching is to include entrance pipe adjustments.



STEEL PATTERN TO BE USED FOR EAST 1/2 COOLIDGE BET. 0:00 and 12:52. Balance of Project to carry Typical Steel Pattern.

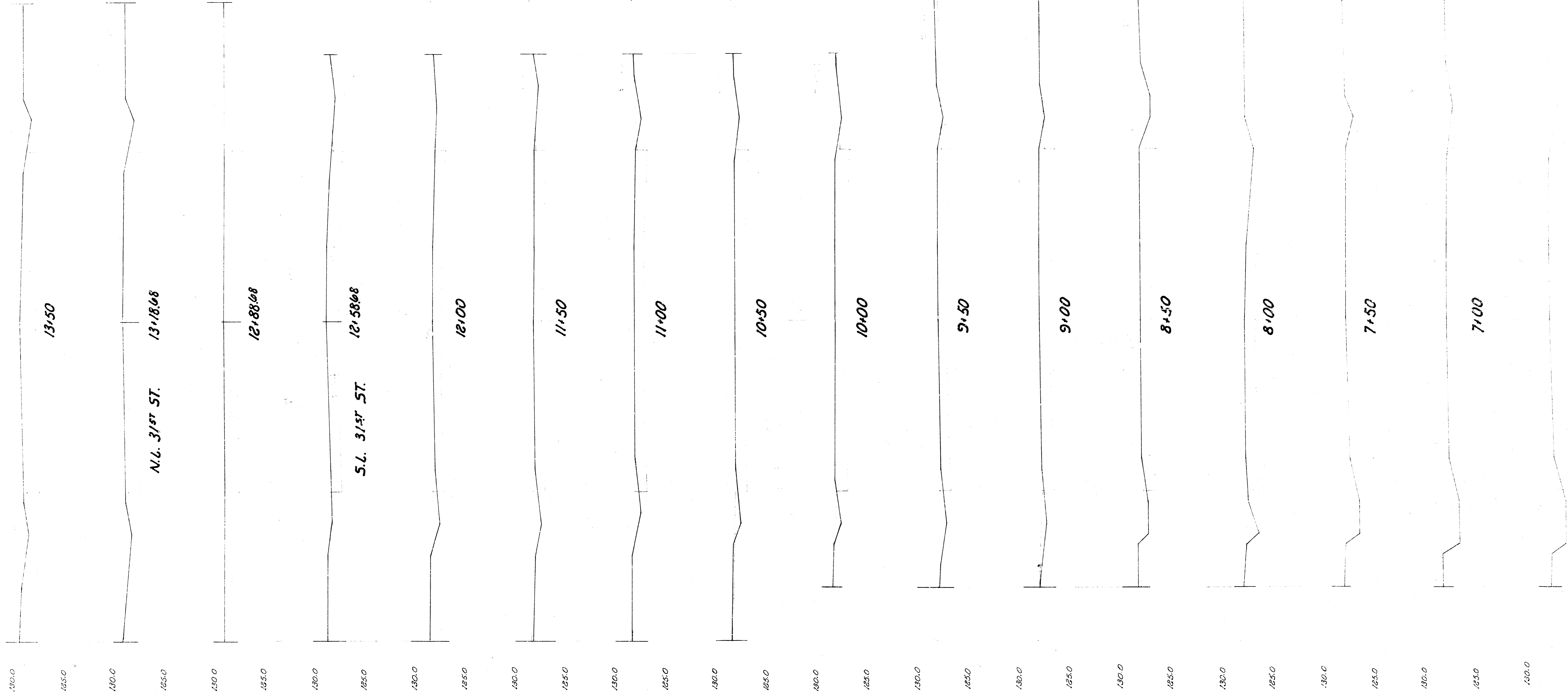
0173



CONSTRUCTION PLANS
 1970-1971
 5/10/71

30 40 50 60 70 80 90 100 110 120 130

14+00



61 493 N.L. 3074 ST.

