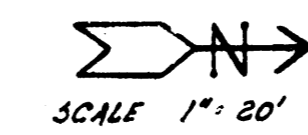
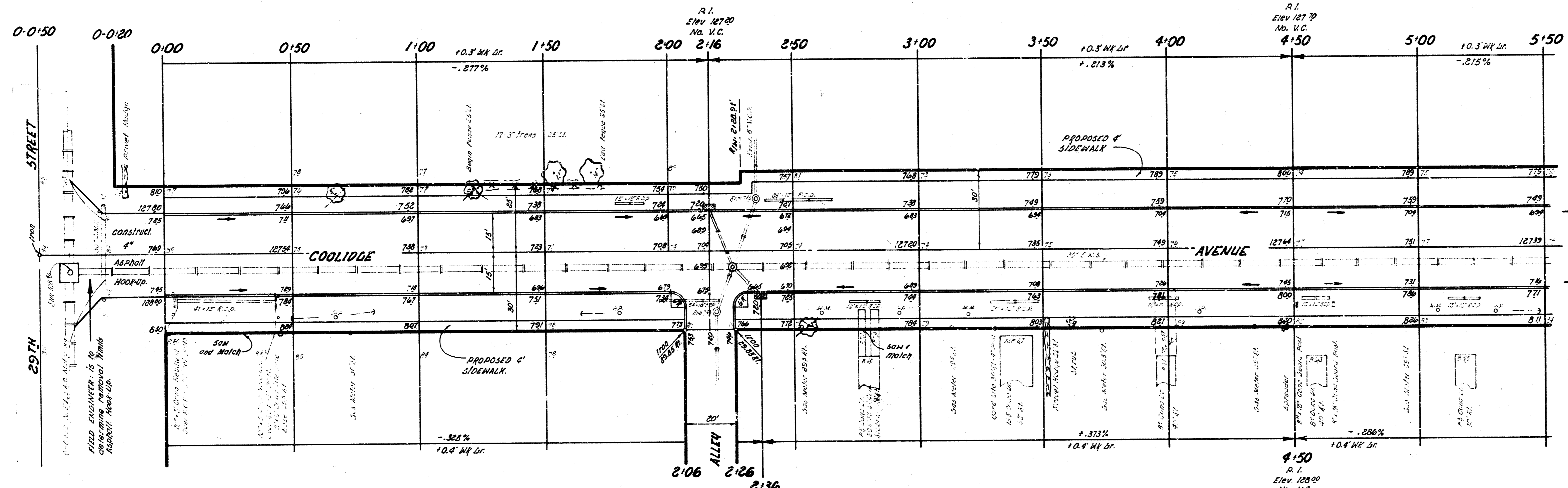


B.M. 10294 Top N.W. Bolt in box L-Post Point Sign 40' East of COOLIDGE & 30' N. of 29TH STREET.



BASE LINE IS 00 CENTER LINE



STEEL
NOTE: See Sheet 2 for Steel Patterns of Soil & COOLIDGE 0+00 to 12+52.

EARTHWORK

| PROPERTY | EXCAVATION | COMP. FILL | CITY | EXCAVATION | COMP. FILL |
|----------|----------------|-------------|------|--------------|------------|
| | 2,433.2 Cu Yds | 15.6 Cu Yds | | 182.5 Cu Yds | 0.7 Cu Yd |
| | 1.0% 243.3 | 10% 1.6 | | 10% 18.3 | 10% .07 |
| | 2,676.5 Cu Yds | 17.2 Cu Yds | | 200.8 Cu Yds | 1.0 Cu Yd |

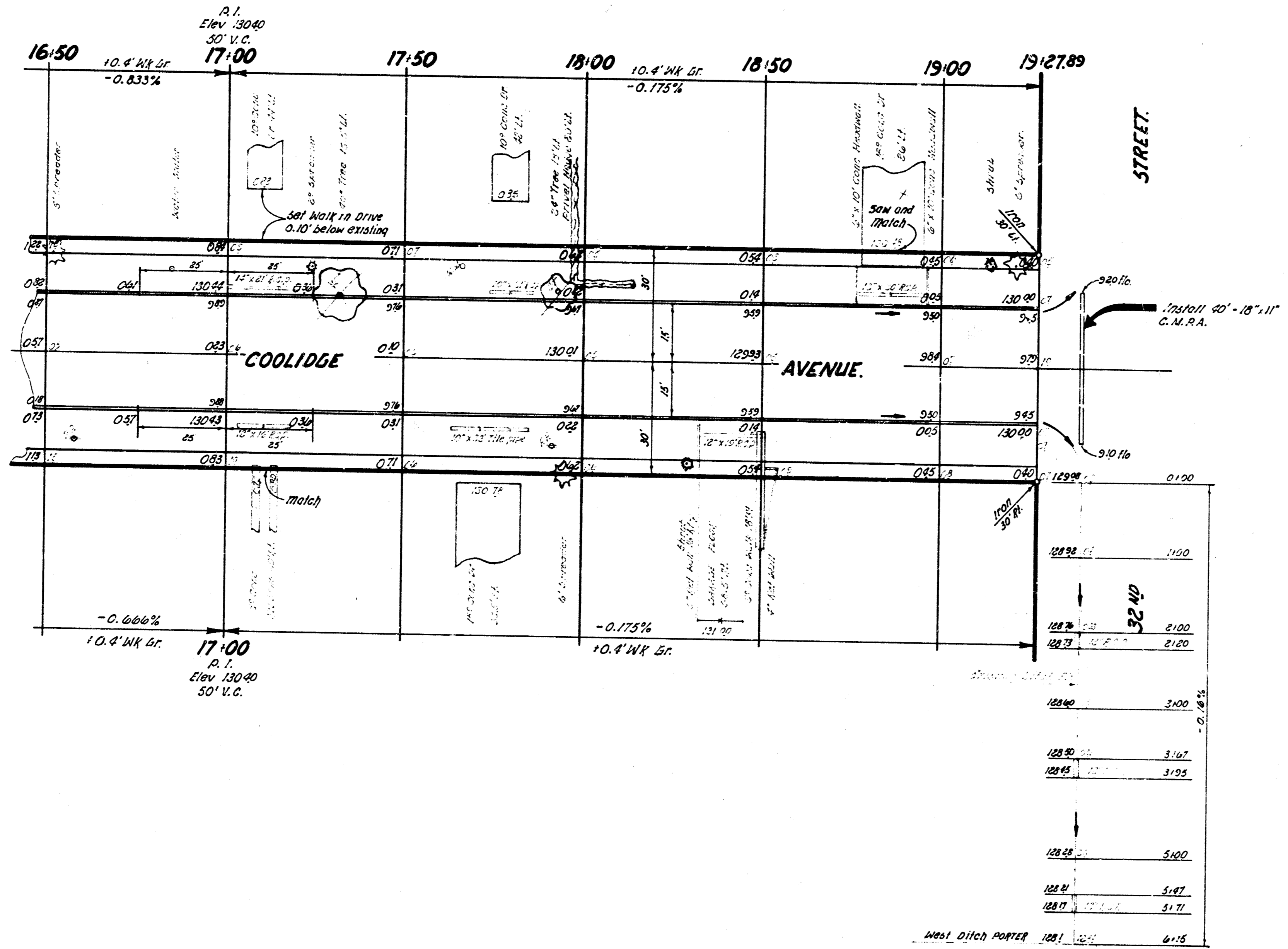
NOTE: Bid Item lined feet pipe removed is to include Headwall Removal.

SIDEWALK
Grade parking and Clear Right of Way for proposed sidewalk. Compact backfill in sidewalk area. Sidewalk to be constructed by OTHERS.

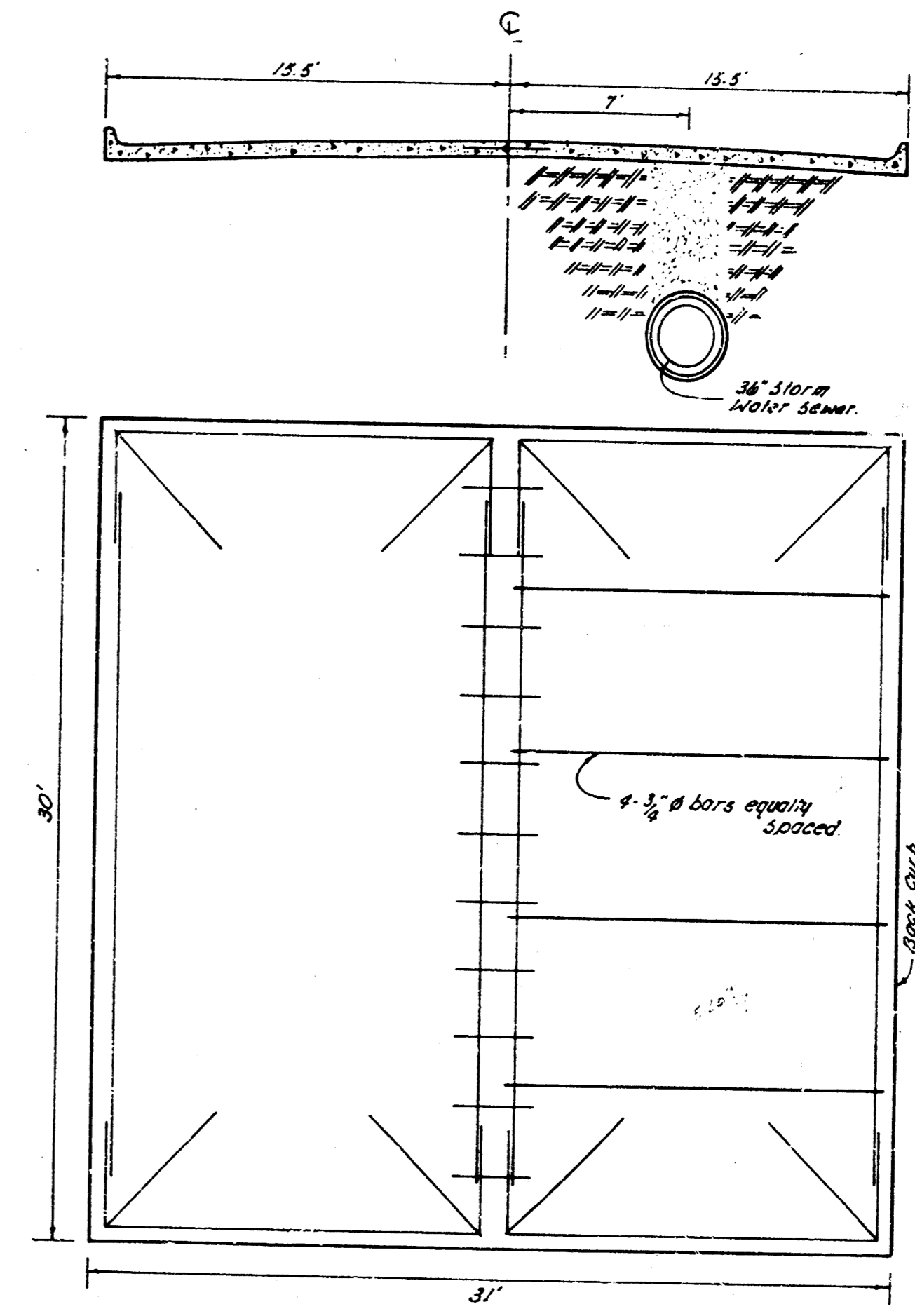


COOLIDGE AVENUE.
N.L. 25TH STREET to S.L. 32ND STREET No.
30' CONC and CURB
CITY of NICHITA, KANSAS
B.E. SMITH CITY ENGINEER
DATE Sept 1938 PROJ No. C.17-76

B.M. 131.7 S.M. Cor. Conc. Strip. S. end paroh. Ho# 3260 COOLIDGE.



DITCHING
 Cut Ditch to elevations shown
 and actual entrance pipes to match.
 Bid Price: Linear feet ditching is to
 include entrance pipe adjustments.



STEEL PATTERN TO BE USED FOR EAST
 1/2 COOLIDGE BET. 0:00 and 18:52. Balance
 at Project to carry typical steel pattern.