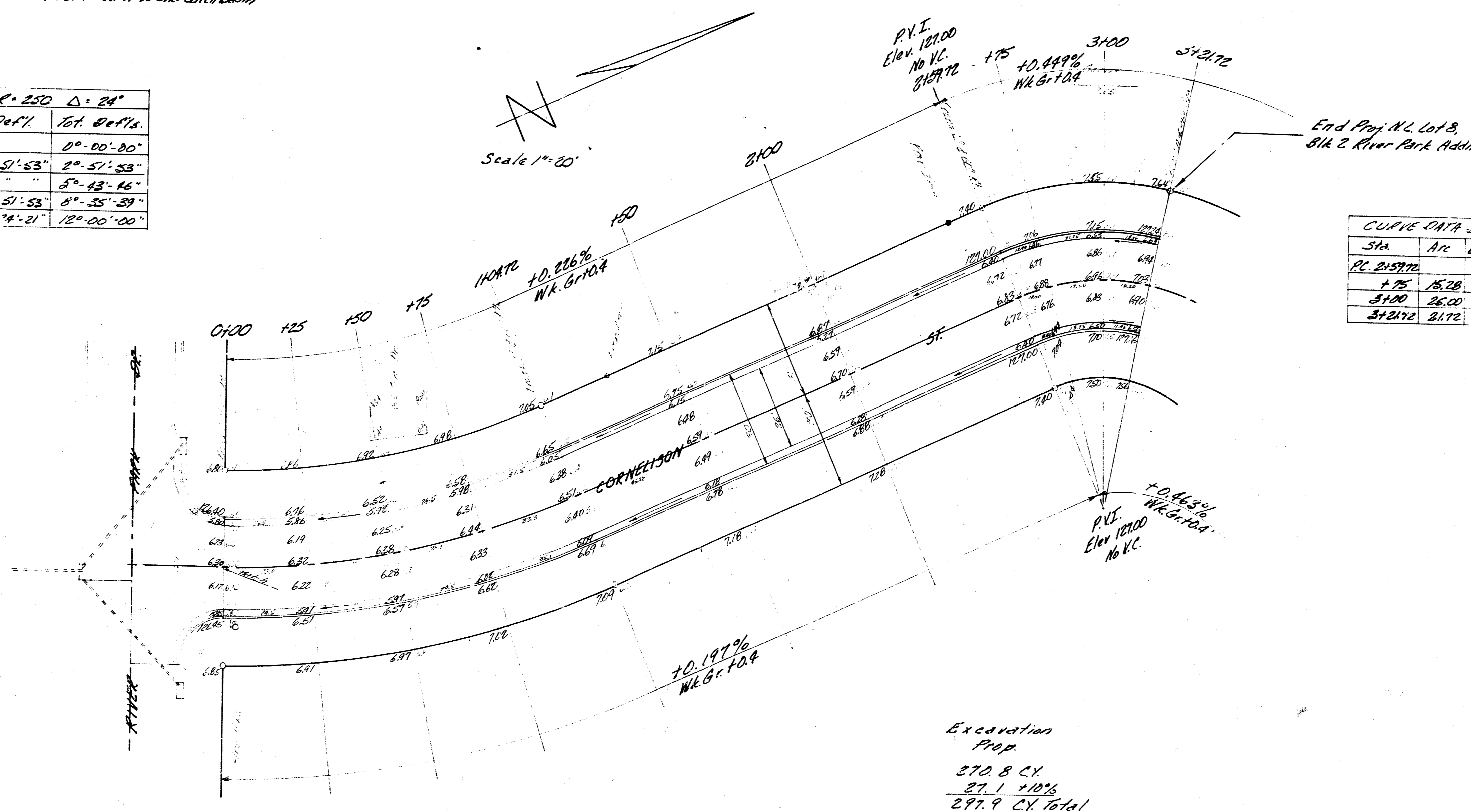


B.M. 126.66 2" in Ritchie N. Ch. River A. On @ S.L. Lot 1, 2 & 6
 B.M. 126.66 City disc Top S. Ch. River A. On @ S.L. Lot 1, 2 & 6

CURVE DATA BASED ON W.P. R=250 Δ=24°

Sta	Ar.	BD	W.C.	Def. 1	Tot. Def's
P.C. 0+00				0° 00' 00"	
1+25	25.0	25.69	30.53	2° 51' 53"	2° 51' 53"
1+50	"	"	30.54	"	5° 43' 46"
1+75	25.0	25.69	30.53	2° 51' 53"	8° 35' 39"
P.T. 1+00				12° 00' 00"	



CURVE DATA BASED ON W.P. R=100 Δ=90°

Sta	Ar.	BD	W.C.	Def. 1	Tot. Def's
P.C. 2+15				0° 00' 00"	
1+75	15.28	17.58	8.88	4° 21' 38"	4° 21' 38"
3+00	26.00	24.90	13.60	7° 09' 42"	11° 31' 20"
3+21.2	21.72	21.75	11.09	6° 15' 20"	17° 46' 40"

Excavation Prop.
 270.8 CY
 27.1 +/-
 297.9 CY total

CORNELLISON ST.
 N.L. RIVER PARK DRIVE TO
 N.L. LOT 8, Bk 2, RIVER PARK ADDN.
 26' - 2" - 30' A.C.
 CITY OF WICHITA, KANSAS
 B.E. SMITH CITY ENGINEER
 DATE APRIL, 1915 PROJ. NO. C.M.-A