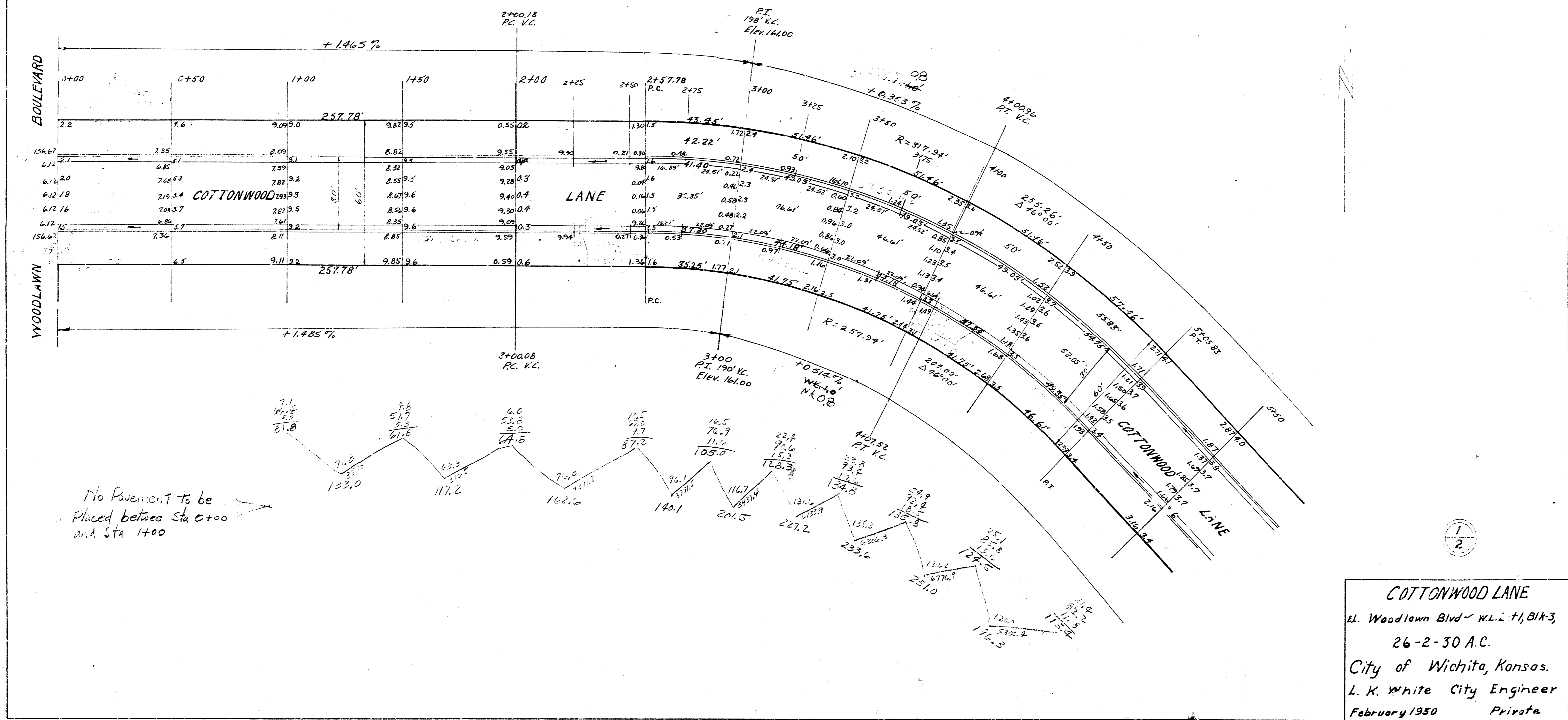


B.M. 15450 68.50' S of S.L. Cottonwood 5' x 4' Conc. Bu.
 Curb access Woodlawn S.E. Cor E. headwall.

Note: Sta. on 9' offset on the long side (N.S.)
 Grades set on cb. line distances.



No Pavement to be
 Placed between Sta 0+00
 and Sta 1+00

COTTONWOOD LANE
 El. Woodlawn Blvd - W.L. +1, Blk-3,
 26-2-30 A.C.
 City of Wichita, Kansas.
 L. K. White City Engineer
 February 1950 Private

B.M. 154.55 S.E. Cor. E. Headwall Cons Box Culv 5' x 4' 63' S. of S.L. Cottonwood

Note: Sta. on 3' offset on the long side (M.S.)

Note: Street plan Sta. 4100 to Sta. 5150 included on sheet #1.

Note: Intersection included on plan of Hunter St.

B.M. 163.70 S.E. Cor. of Hunter Cottonwood Pl. Iron

Note: No Pavement to be placed beyond Sta. 8+05 until San. Sewer has been installed

