

STREETS IN COTTONWOOD VILLAGE SIXTH

GOVERNEOUR
WINTERBERRY
30TH ST. NO. CIR.
GOVERNEOUR CIR.

FROM S.L. WINTERBERRY TO N.L. COTTONWOOD VILLAGE SIXTH
FROM E.L. GOVERNEOUR TO E.L. COTTONWOOD VILLAGE SIXTH
FROM E.L. GOVERNEOUR TO & INCLUDING CUL-DE-SAC
FROM A POINT 15' NO. OF S.L. LOT 7, BLK.2 TO S.L. WINTERBERRY
SERVING LOTS 8 THROUGH 12 BLK.2 COTTONWOOD VILLAGE SIXTH

PROJECT NO.
472-76-245-81521-000-000-001

CITY OF WICHITA, KANSAS
MICHAEL E. LINDEBAK CITY ENGINEER
MARCH, 1987

GENERAL NOTES

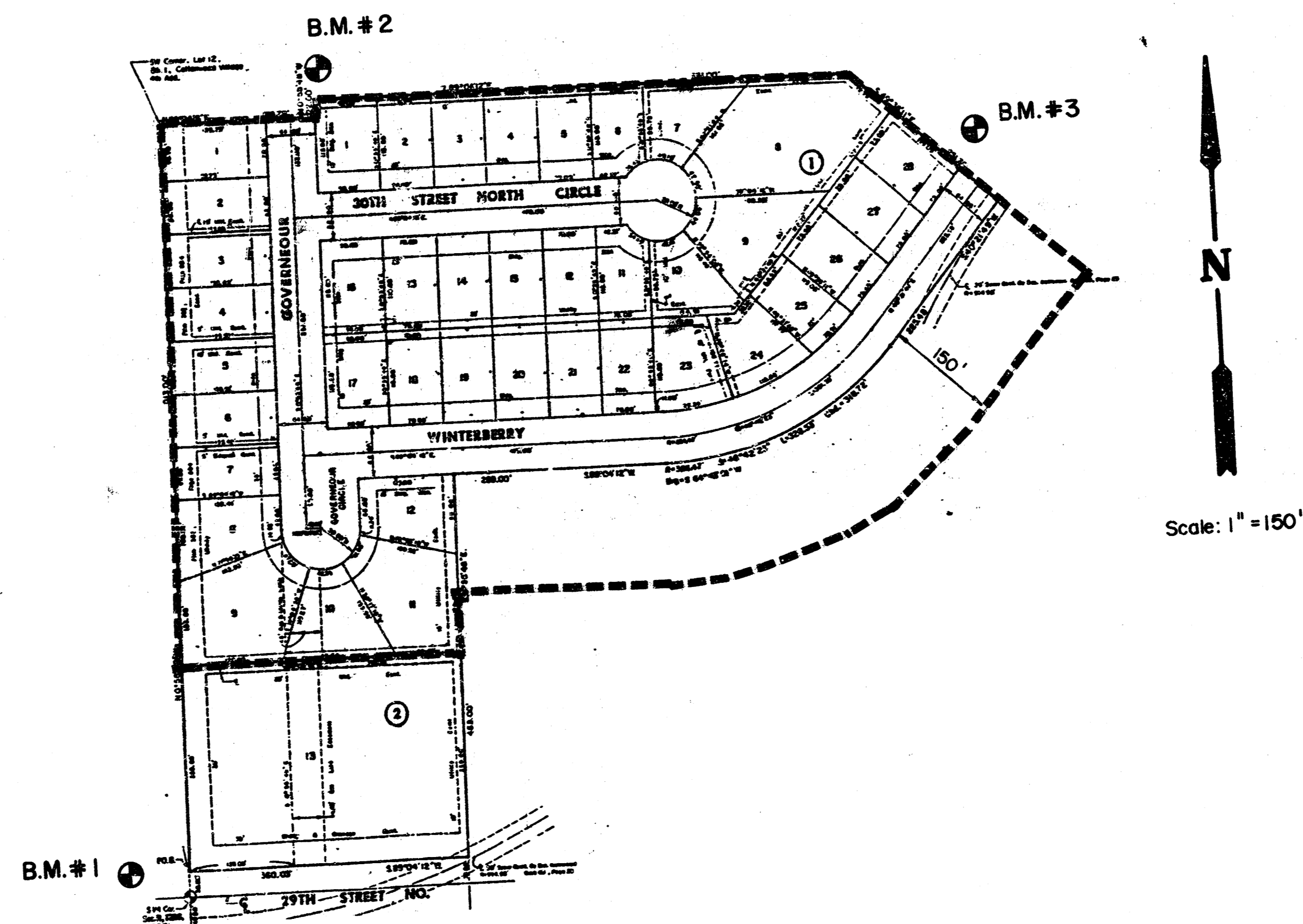
- CURB AND GUTTER WITH WIDENED GUTTER TO BE PAID AS COMBINED CURB AND GUTTER.
- ALL DRAINAGE STRUCTURES NOT PART OF THE "INCIDENTAL DRAINAGE" PORTION OF THIS CONTRACT ARE "BY OTHERS".
- THE CONTRACTOR SHALL BE RESPONSIBLE FOR PRESERVING PROPERTY IRONS. THE CONTRACTOR SHALL BE REQUIRED TO RE-ESTABLISH ANY PROPERTY IRONS WHICH ARE DAMAGED OR DESTROYED BY HIS CONSTRUCTION OPERATIONS. SUCH IRONS SHALL BE RE-ESTABLISHED BY A LICENSED LAND SURVEYOR OR A LICENSED PROFESSIONAL ENGINEER IN ACCORDANCE WITH STATE LAWS.
- TRANSITION CURB FROM FULL HEIGHT COMBINATION CURB AND GUTTER TO ROLL TYPE COMBINATION CURB AND GUTTER IS TO BE PAID AS BID FOR LINEAR FEET COMBINED CURB AND GUTTER (3 5/8" ROLL).
- CURB SHALL BE DEPRESSED THROUGH DRIVES (14"), WHERE ROLL TYPE CURB AND GUTTER IS CONSTRUCTED.
- I-A INLET HOOKUPS TO BE BID EACH. SIZE VARIES.

NOTE: NOTIFY THE FOLLOWING COMPANIES PRIOR TO ANY EXCAVATION:

ARKLA GAS COMPANY	942-8350
BELL TELEPHONE COMPANY	1-316-571-2115
CABLEVISION	262-0661
KPL GAS SERVICE	263-7511
KANSAS GAS & ELECTRIC	261-6248
KANSAS ONE-CALL	1-800-344-7233
CITIES SERVICE	524-0491
KANSAS GAS SUPPLY	1-316-254-7243
CONTINENTAL PIPELINE COMPANY	1-316-681-2081
CO-OP REFINERY PIPELINE	1-316-221-2107

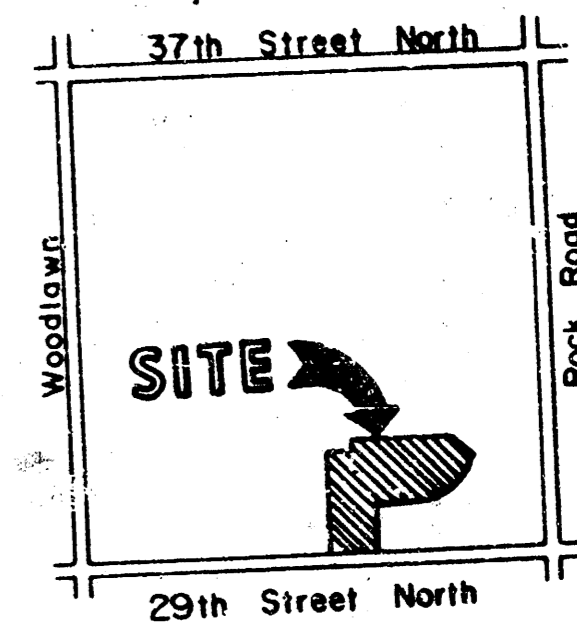
BENCH MARKS

- B.M. #1 City of Wichita Bench Mark Disc, 75' West & 30.3' North of 1/4 Sec. Corner & 55' North & 85' West of Centerline of Pavement, Gouverneour & 29th Street North. Elev.= 182.56
- B.M. #2 "4" Cut on Curb at South End of Driveway Return, 3122 Gouverneour, Lot 1, Block 1, Cottonwood Village 5th Addition Elev.= 192.34
- B.M. #3 "4" Cut on Curb at Centerline of Approach Walk, 7500 Winterberry, Lot 32, Block 1, Cottonwood Village 5th Addition. Elev.= 196.93

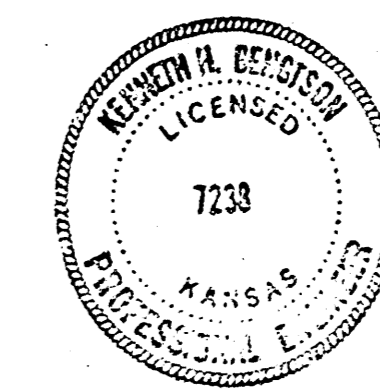


INDEX TO DRAWINGS

SHEET NO.	DESCRIPTION
1	Title Sheet
2-5	Paving Details
6	Gouverneour & Gouverneour Circle
7-8	Winterberry
9	30 Th. Street North Circle
10-14	Paving Cross Sections
15	Final Plat

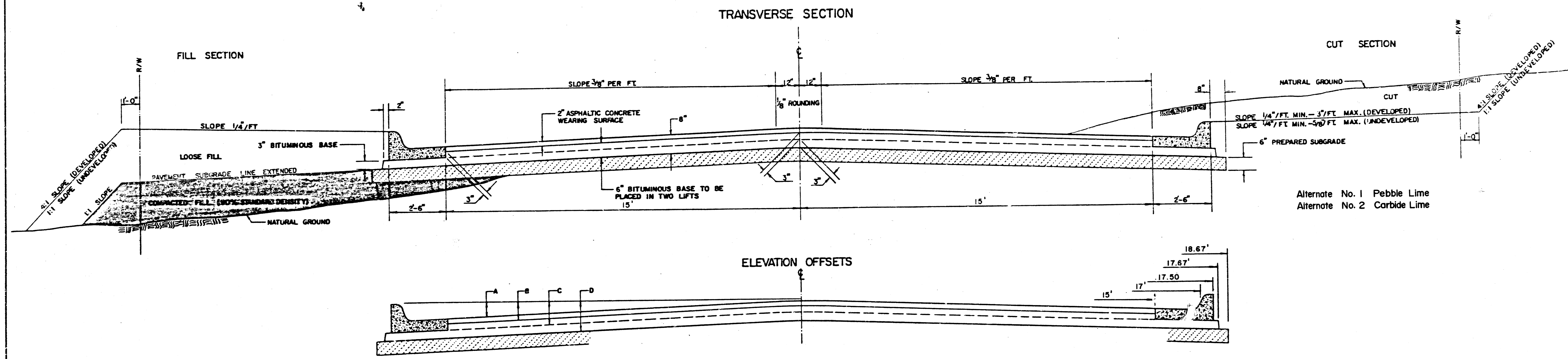


LOCATION MAP

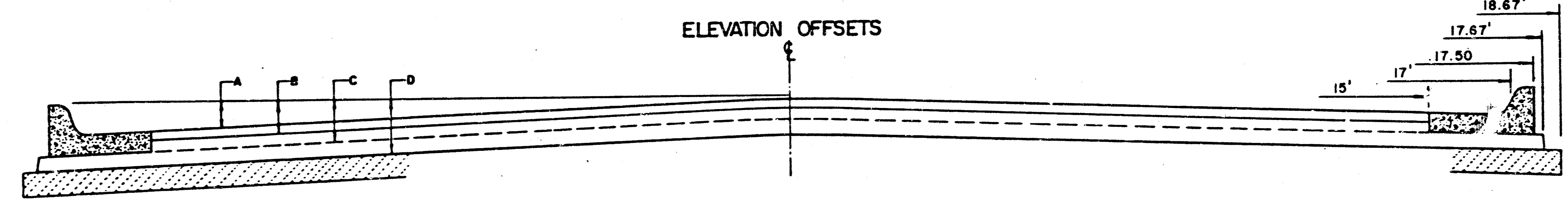


	COTTONWOOD VILLAGE SIXTH PAVING PLANS	Design: KKL/E.F. Drawn by: DDG Checked by: KHB Date: March, 1987 Job No.
	MID-KANSAS ENGINEERING CONSULTANTS PA 3500 NORTH ROCK ROAD BUILDING #800 WICHITA, KANSAS 67226	682-6561

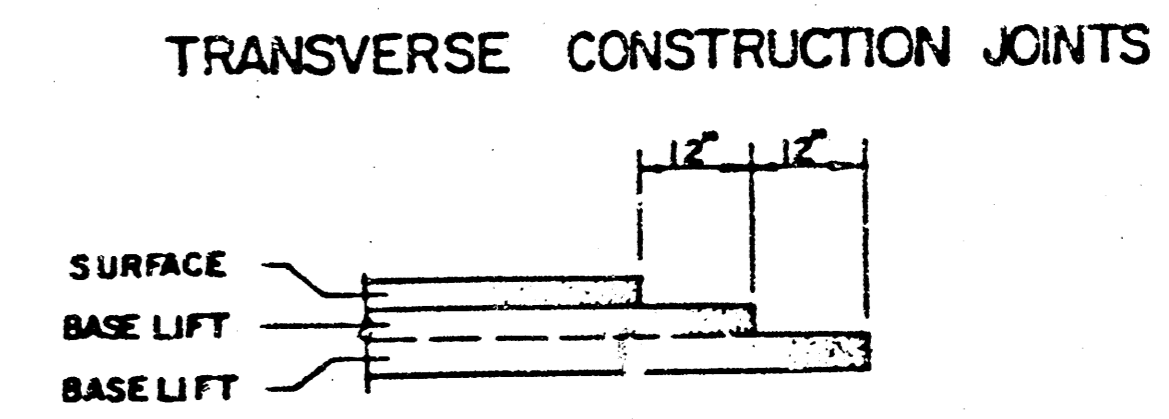
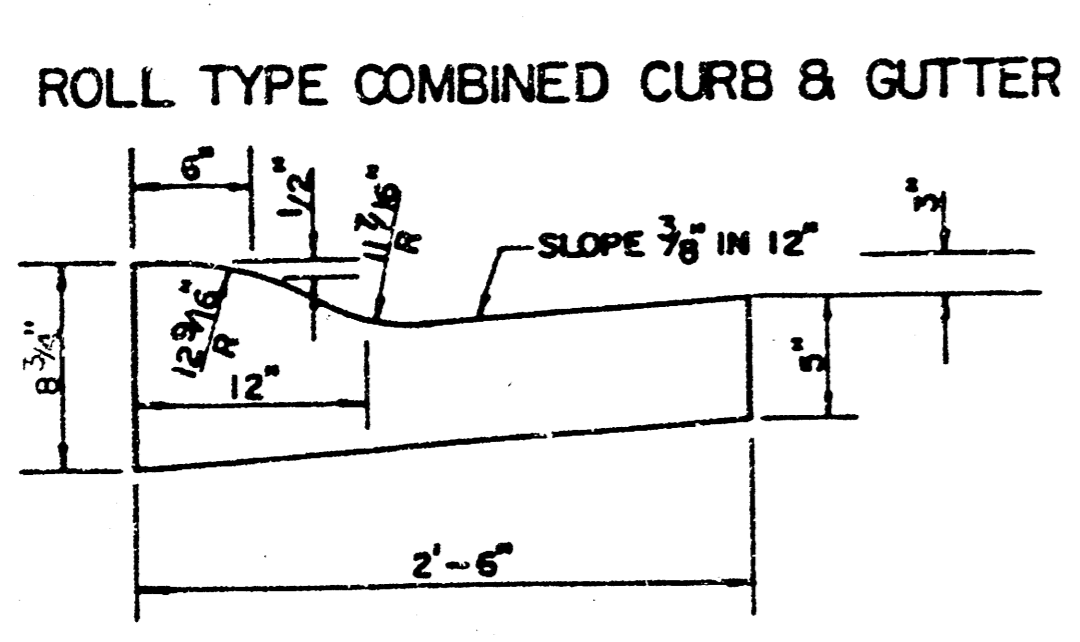
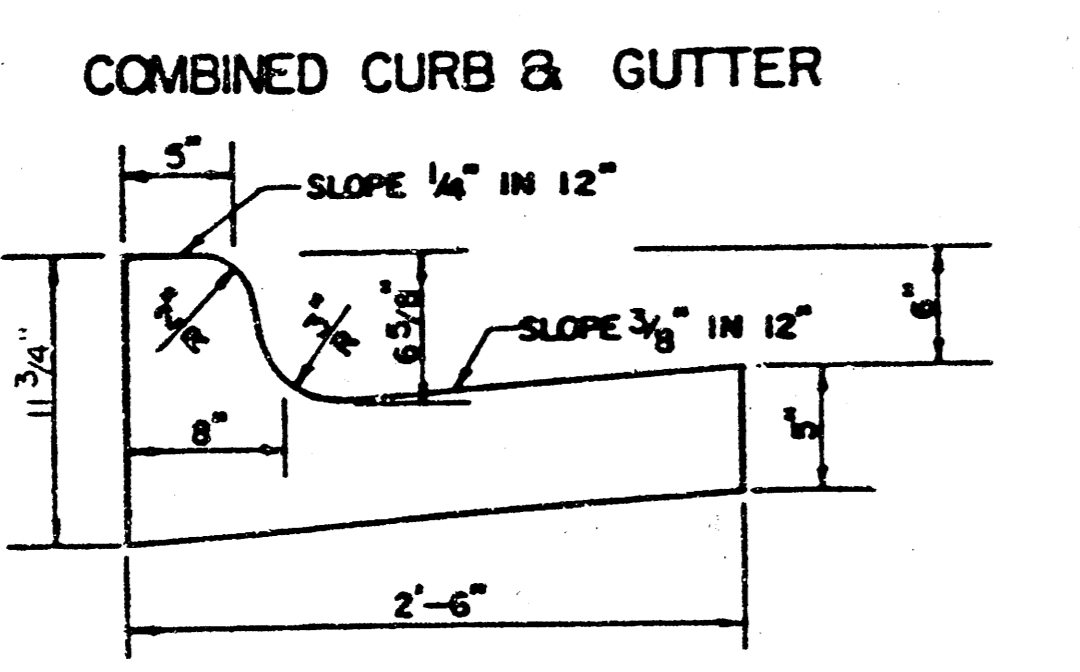
TYPICAL 35' PAVEMENT DETAILS



Alternate No. 1 Pebble Lime
Alternate No. 2 Corbide Lime



	DISTANCE FROM CENTERLINE (LT. & RT.)												
	0'	2'	4'	6'	8.5'	10'	12'	14'	15'	17'	17.5'	17.67'	18.17'
A: TOP OF CURBS TO TOP OF SURFACE LIFT	0.04	0.08	0.14	0.21	0.29	0.33	0.39	0.46	0.49	—	—	—	—
B: TOP OF CURBS TO TOP OF UPPER BASE LIFT	0.21	0.25	0.31	0.37	0.46	0.50	0.56	0.63	0.63	—	—	—	—
C: TOP OF CURBS TO TOP OF LOWER BASE LIFT	0.46	0.50	0.56	0.62	0.71	0.75	0.81	0.88	0.90	0.97	0.98	0.99	—
D: TOP OF CURBS TO TOP OF SUBGRADE	0.71	0.75	0.81	0.87	0.96	1.00	1.06	1.13	1.15	1.22	1.23	1.24	1.26

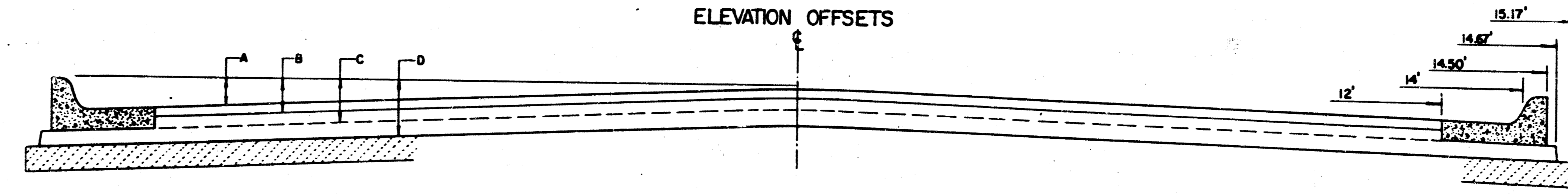
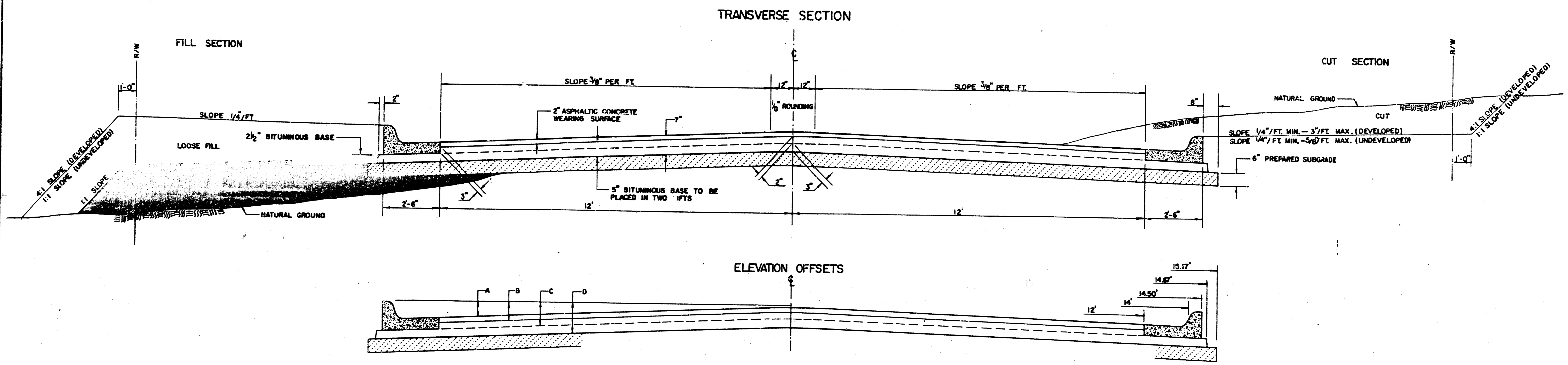


- ### GENERAL NOTES
- 1) THE ASPHALTIC CONCRETE PAVEMENT BETWEEN THE COMBINED CURB AND GUTTER SHALL BE PAID AS SQUARE YARDS OF 8" ASPHALTIC CONCRETE (6" BITUMINOUS BASE).
 - 2) THE BITUMINOUS BASE UNDER AND BEHIND THE COMBINED CURB AND GUTTER SHALL BE PAID AS SQUARE YARDS OF 3" BITUMINOUS BASE.
 - 3) A TACK COAT OF EMULSIFIED ASPHALT (SC-1H OR CSS-1H) SHALL BE APPLIED AT AN APPROXIMATE RATE OF 0.05 GALLONS PER SQUARE YARD BETWEEN EACH LIFT OF ASPHALTIC MATERIAL.
 - 4) BITUMINOUS BASE AND ASPHALTIC CONCRETE WEARING SURFACE SHALL BE PLACED WITH A LAYDOWN MACHINE HAVING AUTOMATIC CONTROLS FOR LINE AND GRADE.
 - 5) CONSTRUCTION JOINTS IN EACH LIFT SHALL BE STAGGERED A MINIMUM DISTANCE OF ONE (1) FOOT FROM JOINTS IN PRECEDING LIFTS AND PLACED SO THAT A JOINT WILL BE CONSTRUCTED ON THE CENTERLINE OF THE TOP LIFT.
 - 6) CONTRACTOR TO BID ONLY ONE SUBGRADE TREATMENT ALTERNATE WHEN ALTERNATES ARE PROVIDED IN THE PROPOSAL AND CONTRACT. THE ALTERNATE CHOSEN BY THE SUCCESSFUL BIDDER SHALL BE USED IN CONSTRUCTING THIS PROJECT.

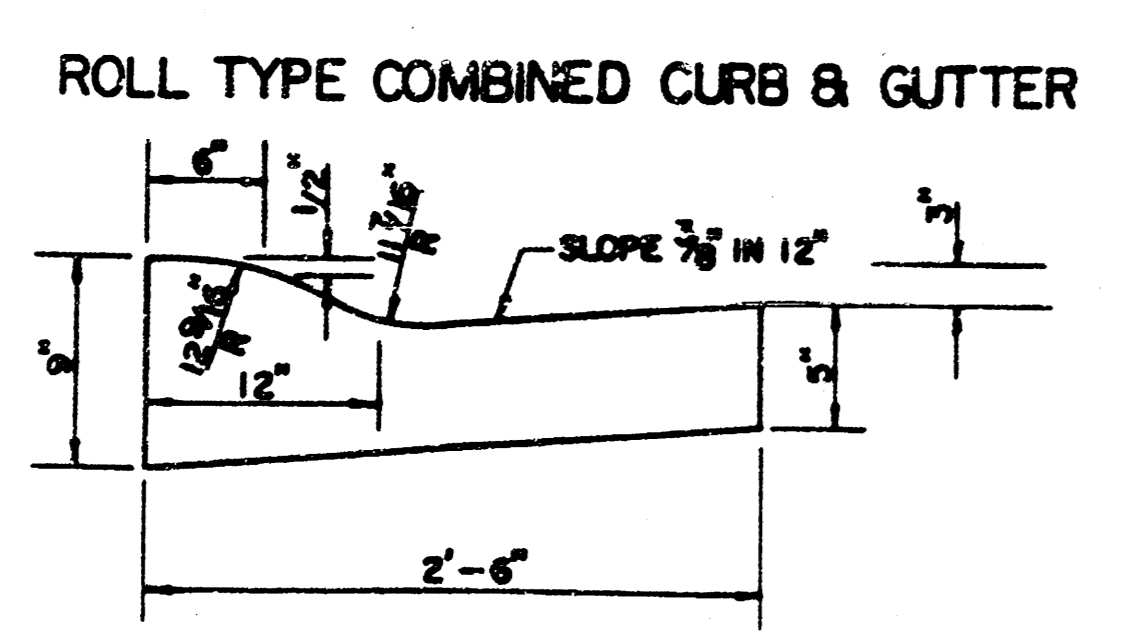
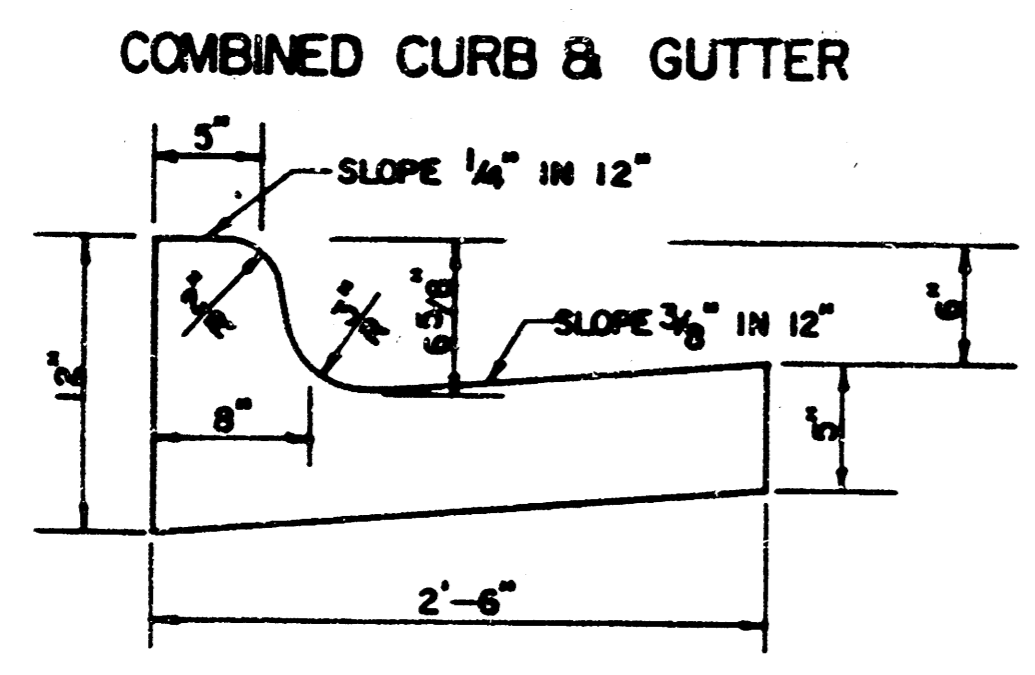
TRANSVERSE CONSTRUCTION JOINTS SHALL BE CONSTRUCTED IN FLEXIBLE BASE PAVEMENTS AT LOCATIONS WHERE PAVEMENT JOINS EXISTING FLEXIBLE BASE PAVEMENT AS SHOWN BY THE DETAIL. ALL COSTS ASSOCIATED WITH THE CONSTRUCTION OF THE TRANSVERSE JOINT SHALL BE INCLUDED IN THE BID PRICE FOR SQUARE YARDS 8" ASPHALTIC CONCRETE (6" BITUMINOUS BASE).

8 INCH RESIDENTIAL ASPHALTIC CONCRETE PAVEMENT WITH 6 INCH BITUMINOUS BASE
CITY OF WICHITA, KANSAS
PROJECT NUMBER
472 - 76 - 245 - 81521 - 000 - 000 - 001 **2** 15

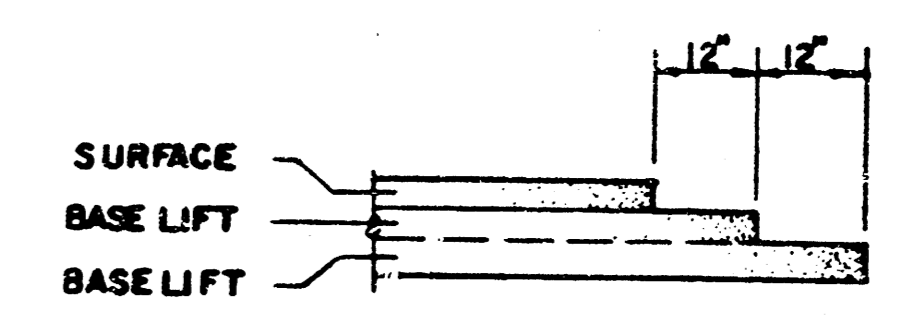
TYPICAL 29' PAVEMENT DETAILS



	DISTANCE FROM CENTERLINE (LT. & RT.)												
	0'	2'	4'	6'	7'	8'	10'	12'	14'	14.5'	14.67'	15.17'	
A: TOP OF CURBS TO TOP OF SURFACE LIFT	0.13	0.18	0.24	0.30	0.33	0.36	0.43	0.49	—	—	—	—	
B: TOP OF CURBS TO TOP OF UPPER BASE LIFT	0.30	0.35	0.41	0.47	0.50	0.53	0.60	0.66	—	—	—	—	
C: TOP OF CURBS TO TOP OF LOWER BASE LIFT	0.47	0.52	0.60	0.68	0.71	0.75	0.83	0.90	0.98	1.00	1.01	—	
D: TOP OF CURBS TO TOP OF SUBGRADE	0.72	0.77	0.84	0.91	0.94	0.98	1.05	1.12	1.19	1.21	1.21	1.23	



TRANSVERSE CONSTRUCTION JOINTS



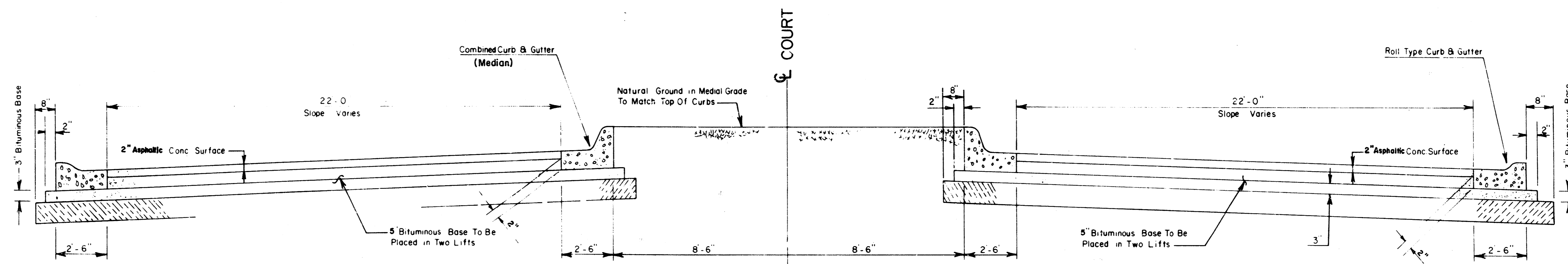
TRANSVERSE CONSTRUCTION JOINTS SHALL BE CONSTRUCTED IN FLEXIBLE BASE PAVEMENTS AT LOCATIONS WHERE PAVEMENT JOINS EXISTING FLEXIBLE BASE PAVEMENT AS SHOWN BY THE DETAIL. ALL COSTS ASSOCIATED WITH THE CONSTRUCTION OF THE TRANSVERSE JOINT SHALL BE INCLUDED IN THE BID PRICE FOR SQUARE YARDS 7" ASPHALTIC CONCRETE (5" BITUMINOUS BASE).

GENERAL NOTES

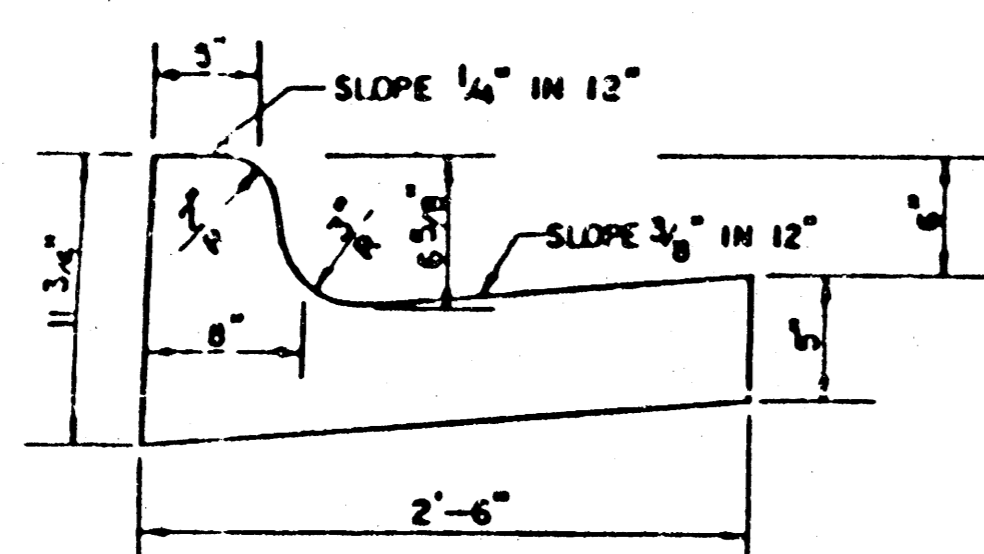
- 1) THE ASPHALTIC CONCRETE PAVEMENT BETWEEN THE COMBINED CURB AND GUTTER SHALL BE PAID AS SQUARE YARDS OF 7" ASPHALTIC CONCRETE (5" BITUMINOUS BASE).
- 2) THE BITUMINOUS BASE UNDER AND BEHIND THE COMBINED CURB AND GUTTER SHALL BE PAID AS SQUARE YARDS OF 2 1/2" BITUMINOUS BASE.
- 3) A TACK COAT OF EMULSIFIED ASPHALT (SC-1H OR CSS-1H) SHALL BE APPLIED AT AN APPROXIMATE RATE OF 0.05 GALLONS PER SQUARE YARD BETWEEN EACH LIFT OF ASPHALTIC MATERIAL.
- 4) BITUMINOUS BASE AND ASPHALTIC CONCRETE WEARING SURFACE SHALL BE PLACED WITH A LAYDOWN MACHINE HAVING AUTOMATIC CONTROLS FOR LINE AND GRADE.
- 5) CONSTRUCTION JOINTS IN EACH LIFT SHALL BE STAGGERED A MINIMUM DISTANCE OF ONE (1) FOOT FROM JOINTS IN PRECEDING LIFTS AND PLACED SO THAT A JOINT WILL BE CONSTRUCTED ON THE CENTERLINE OF THE TOP LIFT.
- 6) CONTRACTOR TO BID ONLY ONE SUBGRADE TREATMENT ALTERNATE WHEN ALTERNATES ARE PROVIDED IN THE PROPOSAL AND CONTRACT. THE ALTERNATE CHOSEN BY THE SUCCESSFUL BIDDER SHALL BE USED IN CONSTRUCTING THIS PROJECT.

7 INCH RESIDENTIAL ASPHALTIC CONCRETE PAVEMENT WITH 5 INCH BITUMINOUS BASE
 CITY OF WICHITA, KANSAS
 PROJECT NUMBER
 472-76-245-81521-000-000-001 3/15

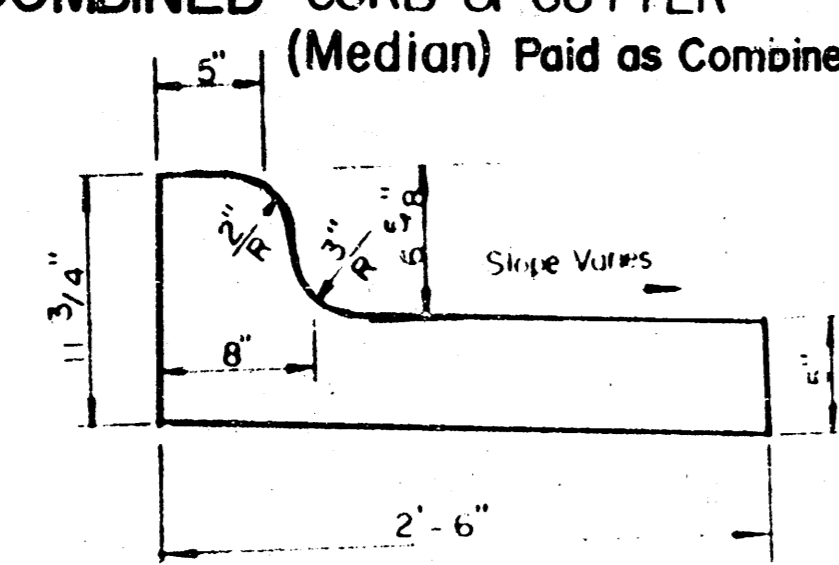
TYPICAL 27' PAVEMENT DETAILS



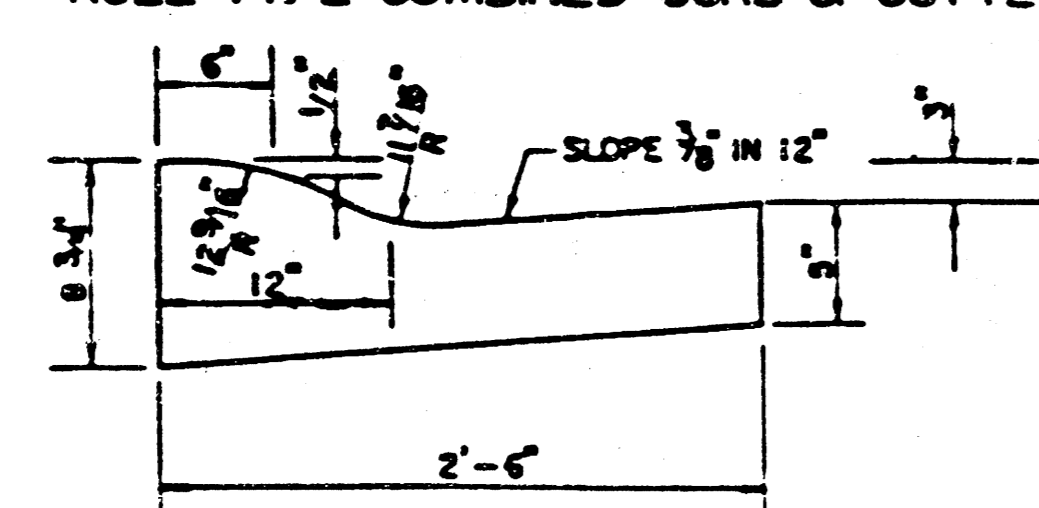
COMBINED CURB & GUTTER



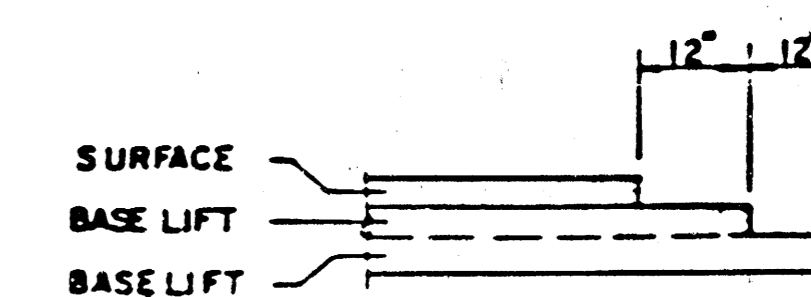
COMBINED CURB & GUTTER (Median) Paid as Combined C&G (6 5/8" @ 1 1/2")



ROLL TYPE COMBINED CURB & GUTTER



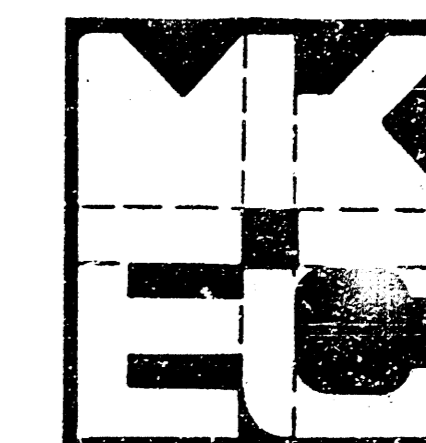
TRANSVERSE CONSTRUCTION JOINTS



TRANSVERSE CONSTRUCTION JOINTS SHALL BE CONSTRUCTED IN FLEXIBLE BASE PAVEMENTS AT LOCATIONS WHERE PAVEMENT JOINTS EXISTING FLEXIBLE BASE PAVEMENT AS SHOWN BY THE INTAIL. ALL COSTS ASSOCIATED WITH THE CONSTRUCTION OF THE TRANSVERSE JOINT SHALL BE INCLUDED IN THE BID PRICE FOR SQUARE YARDS 8" ASPHALTIC CONCRETE (6" BITUMINOUS BASE).

GENERAL NOTES

1. THE ASPHALTIC CONCRETE PAVEMENT BETWEEN THE COMBINED CURB AND GUTTER SHALL BE PAID AS SQUARE YARDS OF 8" ASPHALTIC CONCRETE (6" BITUMINOUS BASE).
2. THE BITUMINOUS BASE UNDER AND BEHIND THE COMBINED CURB AND GUTTER SHALL BE PAID AS SQUARE YARDS OF 3" BITUMINOUS BASE.
3. A TACK COAT OF EMULSIFIED ASPHALT (SC-1H OR CSS-1H) SHALL BE APPLIED AT AN APPROXIMATE RATE OF 0.05 GALLONS PER SQUARE YARD BETWEEN EACH LIFT OF ASPHALTIC MATERIAL.
4. BITUMINOUS BASE AND ASPHALTIC CONCRETE WEARING SURFACE SHALL BE PLACED WITH A LAYDOWN MACHINE HAVING AUTOMATIC CONTROLS FOR LINE AND GRADE.
5. CONSTRUCTION JOINTS IN EACH LIFT SHALL BE STAGGERED A MINIMUM DISTANCE OF ONE (1) FOOT FROM JOINTS IN PRECEDING LIFTS AND PLACED SO THAT A JOINT WILL BE CONSTRUCTED ON THE CENTERLINE OF THE TOP LIFT.
6. CONTRACTOR TO BID ONLY ONE SUBGRADE TREATMENT ALTERNATE WHEN ALTERNATES ARE PROVIDED IN THE PROPOSAL AND CONTRACT. THE ALTERNATE CHOSEN BY THE SUCCESSFUL BIDDER SHALL BE USED IN CONSTRUCTING THIS PROJECT.



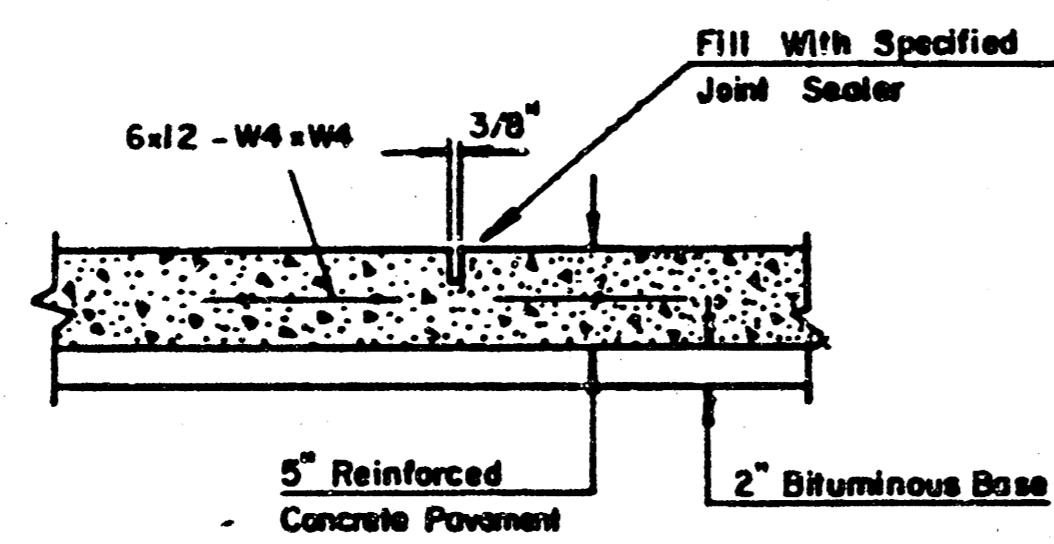
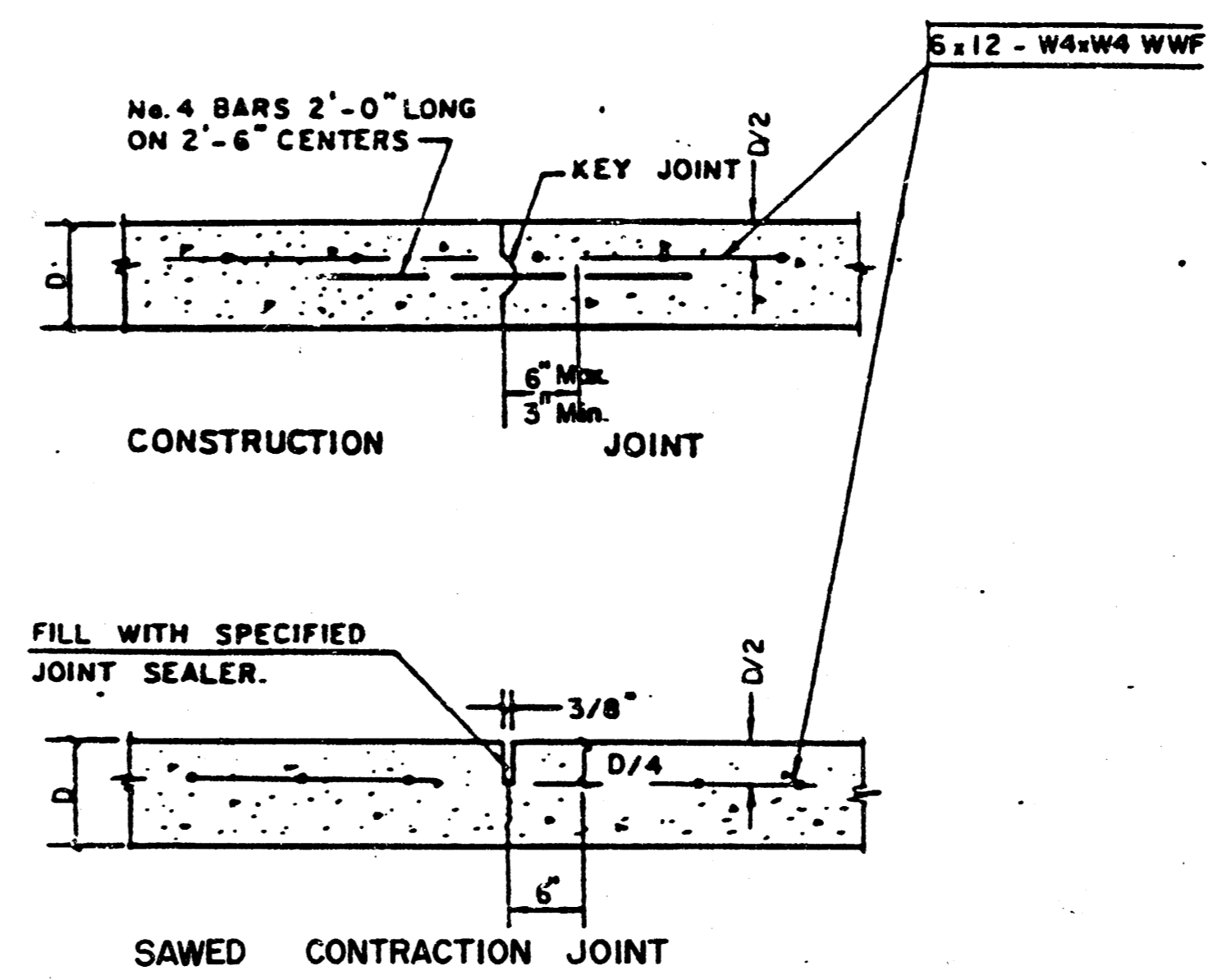
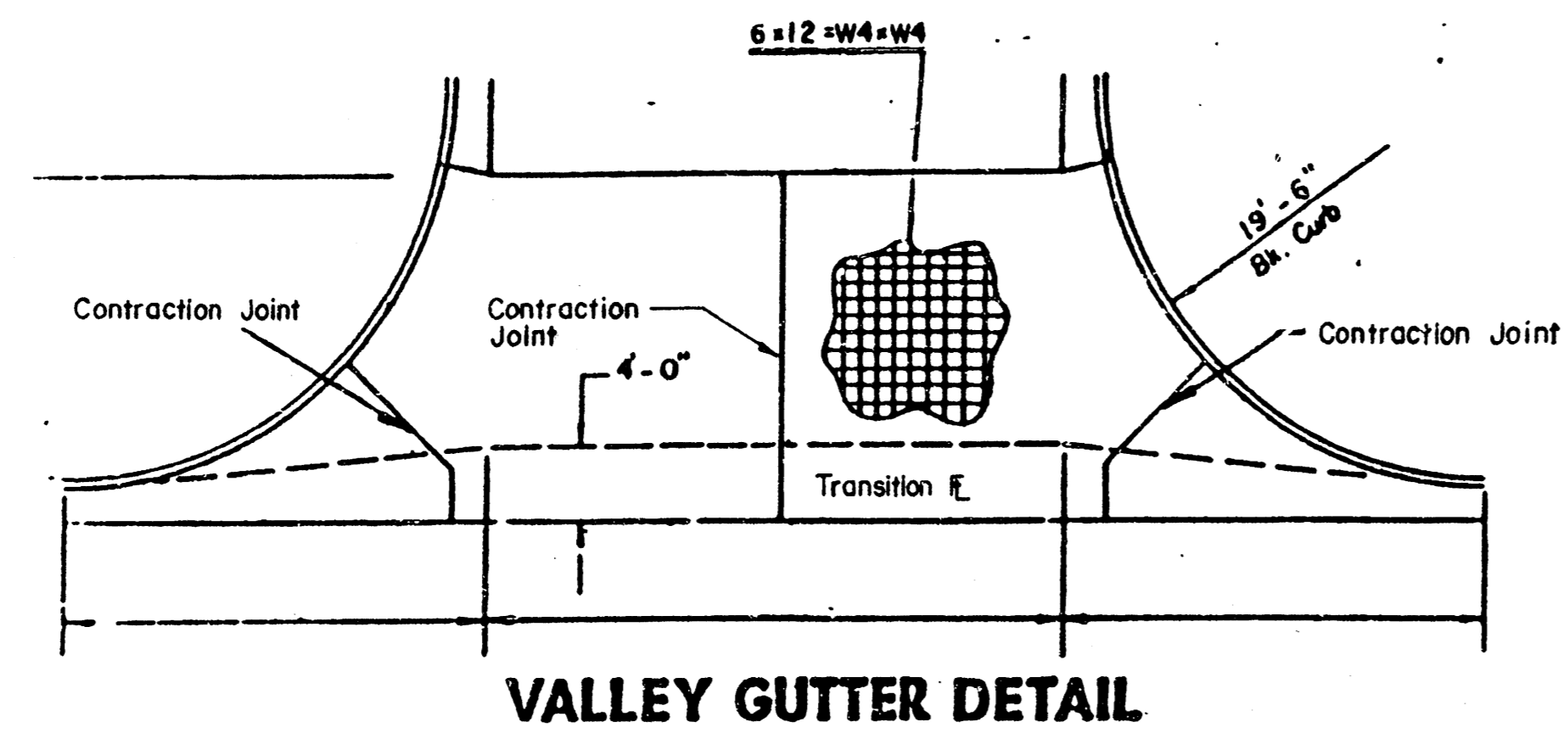
8" INCH RESIDENTIAL
ASPHALTIC CONCRETE
PAVEMENT WITH 6 INCH
BITUMINOUS BASE

Design
KKL/F.F.
Drawn by
DDG
Checked by
KHB
Date
March, 1987
Job no

MID-KANSAS ENGINEERING CONSULTANTS PA
3500 NORTH ROCK ROAD
BUILDING #800
WICHITA, KANSAS 67226

682-6561

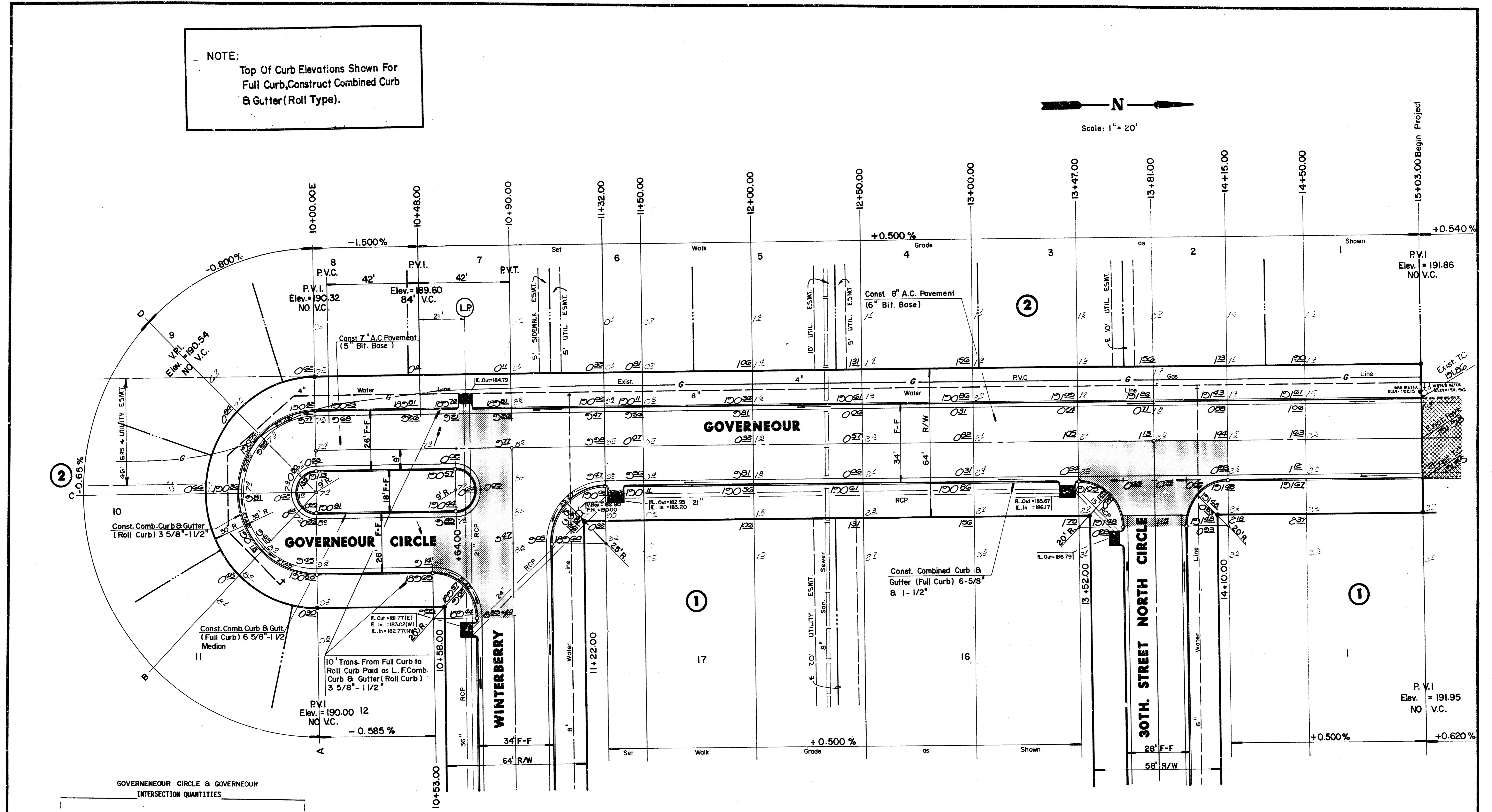
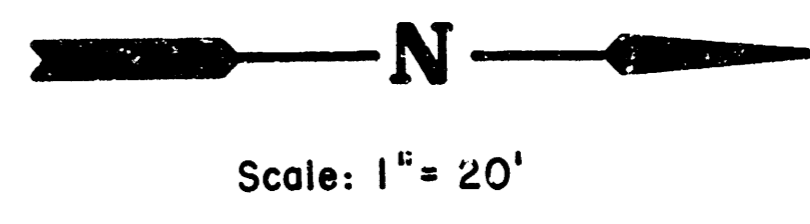
Sheet
4
of 15



7" REINF. VALLEY GUTTER PAVEMENT

	DETAILS	Design KKL / F.F.
		Drawn by DDG
		Checked by K.H.B.
		Served by
		Date March, 1987
MID-KANSAS ENGINEERING CONSULTANTS PA 240 NORTH ROCK ROAD SUITE 130 WICHITA, KANSAS 67206		Sheet 5 / 15 of 15

NOTE:
Top Of Curb Elevations Shown For Full Curb, Construct Combined Curb & Gutter (Roll Type).



②

②

①

①

GOVERNEUR CIRCLE & GOVERNEUR INTERSECTION QUANTITIES

—	S.Y.	Concrete Pavement
246.3	S.Y.	8" Asphaltic Conc. Pavement (6" Bituminous Base)
28	S.Y.	3" Bituminous Base
94.3	L.F.	Combined Curb & Gutter (Full Curb) 6 5/8" - 1 1/2"
—	L.F.	Combined Curb & Gutter
—	S.F.	4" Wheelchair Ramp
—	S.F.	4" Walk
—	C.Y.	Excavation
—	C.Y.	Compacted Fill
—	Lbs.	Reinforcing Steel
279.8	S.Y.	Manipulation
—	Tons	Lime or Cement
—	S.Y.	V.G. Concrete & Asphaltic Concrete Base

COTTONWOOD

VILLAGE

SIXTH

Excavation	Comp. Fill
5296.5	523.3
529.7	52.3
5,826.2 C.Y.	575.6 C.Y.
Manipulation = 8291.4 S.Y.	



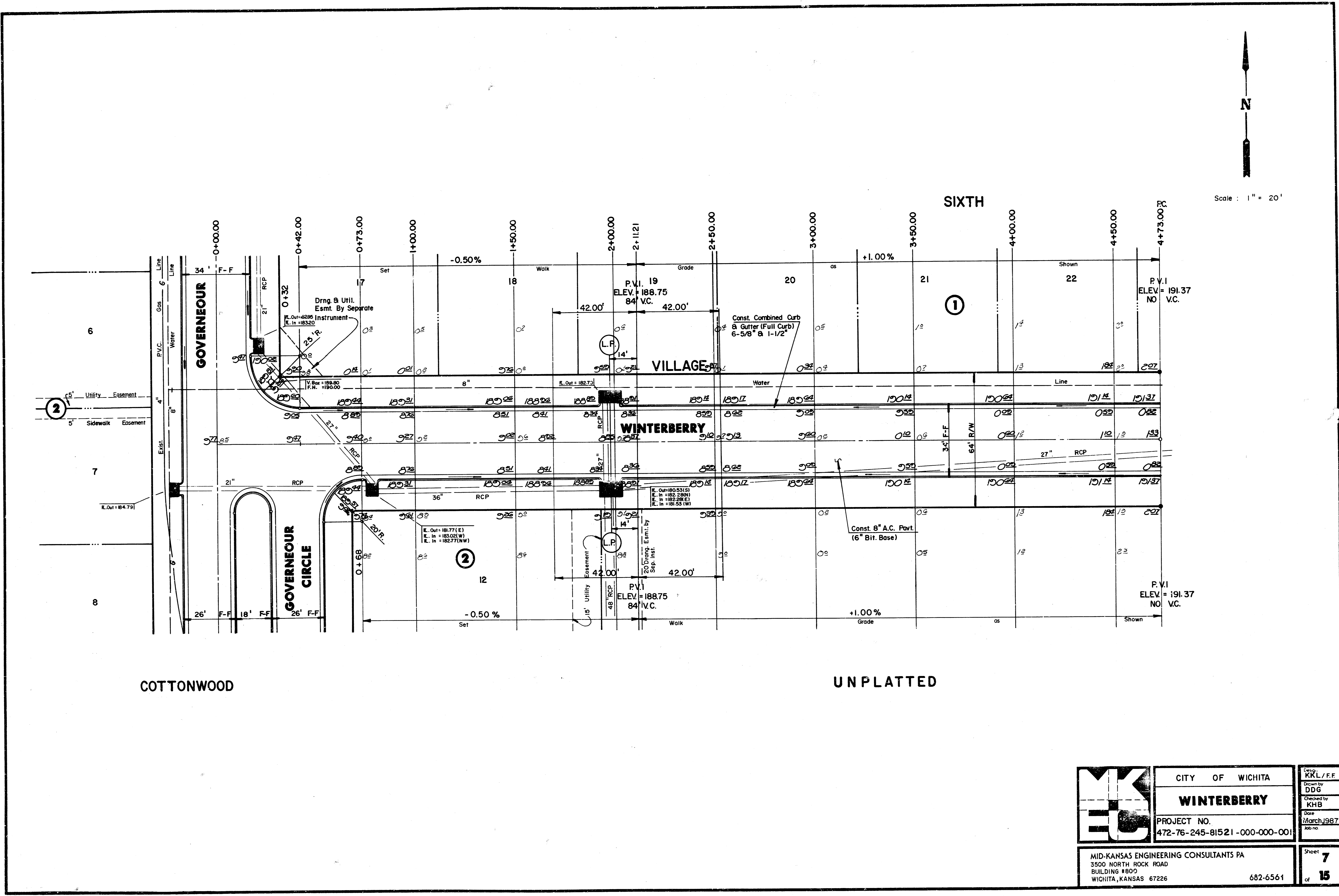
CITY OF WICHITA	
GOVERNEUR	
PROJECT NO. 472-76-245-81521-000-000-001	

MID-KANSAS ENGINEERING CONSULTANTS PA
3500 NORTH ROCK ROAD
BUILDING #800
WICHITA, KANSAS 67226

Design: KKL/FF
Drawn by: DDG
Checked by: KHB
Date: March, 1987
Job no.

Sheet 6 of 15

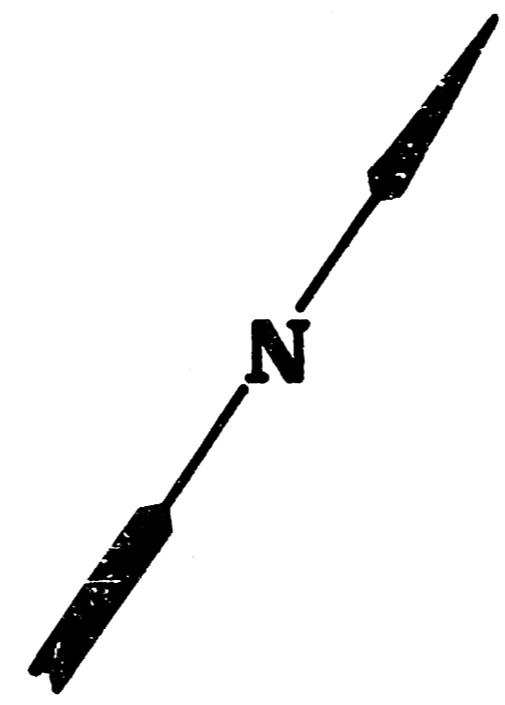
682-6561



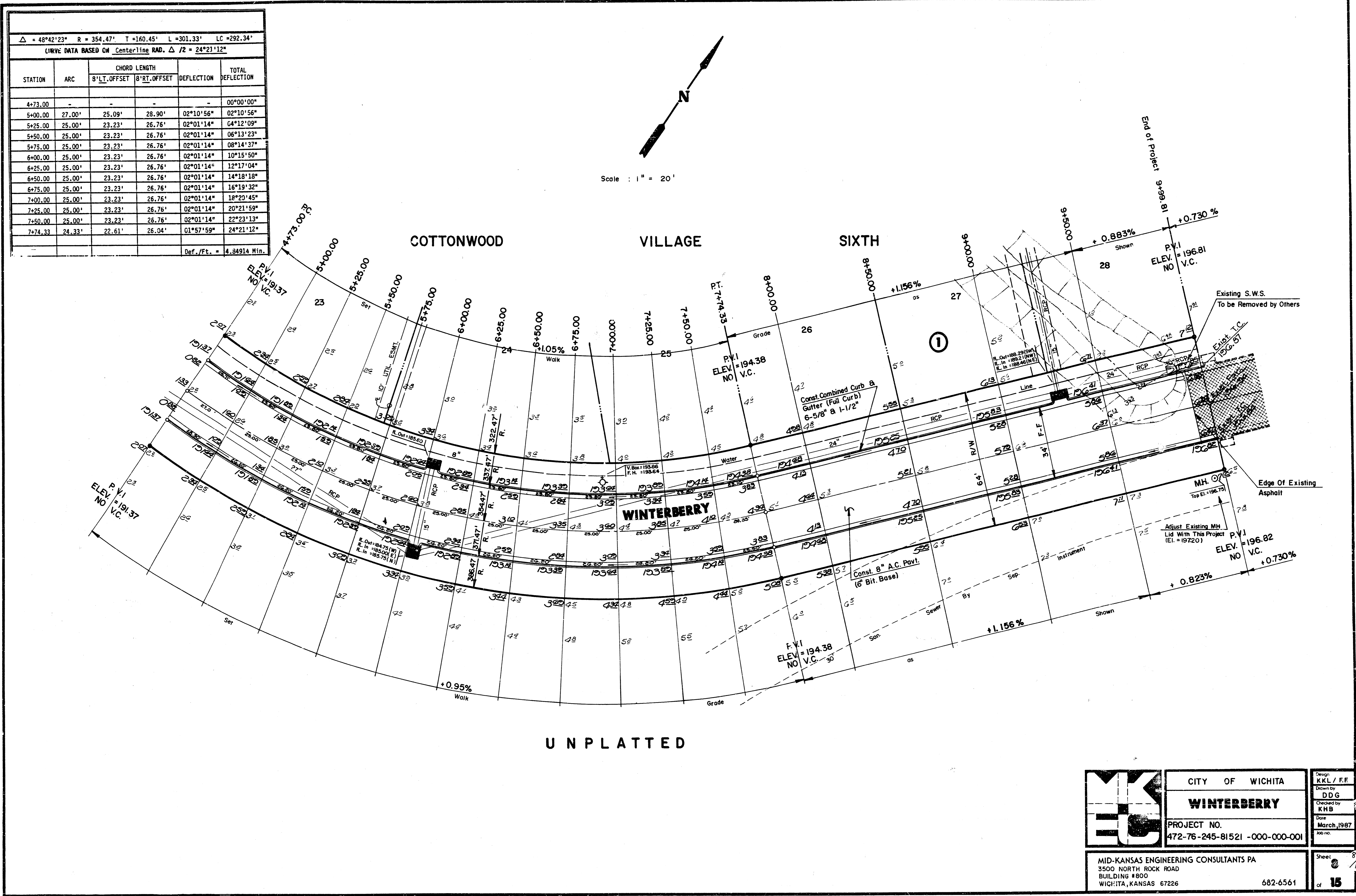
Scale : 1" = 20'

	CITY OF WICHITA	Drawn by KRL / F.F.
	WINTERBERRY	Design by DDG
	PROJECT NO. 472-76-245-81521-000-000	Checked by KHB
MID-KANSAS ENGINEERING CONSULTANTS PA 3500 NORTH ROCK ROAD BUILDING #800 WICHITA, KANSAS 67226		Date March 1987
682-6561		Sheet 7 of 15

$\Delta = 48^{\circ}42'23''$ R = 354.47' T = 160.45' L = 301.33' LC = 292.34' (IRVYE DATA BASED ON Centerline RAD. $\Delta / 2 = 24^{\circ}21'12''$)					
STATION	ARC	CHORD LENGTH		DEFLECTION	TOTAL DEFLECTION
		B' LT. OFFSET	B' RT. OFFSET		
4+73.00	-	-	-	-	00°00'00"
5+00.00	27.00'	25.09'	28.90'	02°10'56"	02°10'56"
5+25.00	25.00'	23.23'	26.76'	02°01'14"	04°12'09"
5+50.00	25.00'	23.23'	26.76'	02°01'14"	06°13'23"
5+75.00	25.00'	23.23'	26.76'	02°01'14"	08°14'37"
6+00.00	25.00'	23.23'	26.76'	02°01'14"	10°15'50"
6+25.00	25.00'	23.23'	26.76'	02°01'14"	12°17'04"
6+50.00	25.00'	23.23'	26.76'	02°01'14"	14°18'18"
6+75.00	25.00'	23.23'	26.76'	02°01'14"	16°19'32"
7+00.00	25.00'	23.23'	26.76'	02°01'14"	18°20'45"
7+25.00	25.00'	23.23'	26.76'	02°01'14"	20°21'59"
7+50.00	25.00'	23.23'	26.76'	02°01'14"	22°23'13"
7+74.33	24.33'	22.61'	26.04'	01°57'59"	24°21'12"
Def./Ft. = 4.84914 Min.					



Scale : 1" = 20'

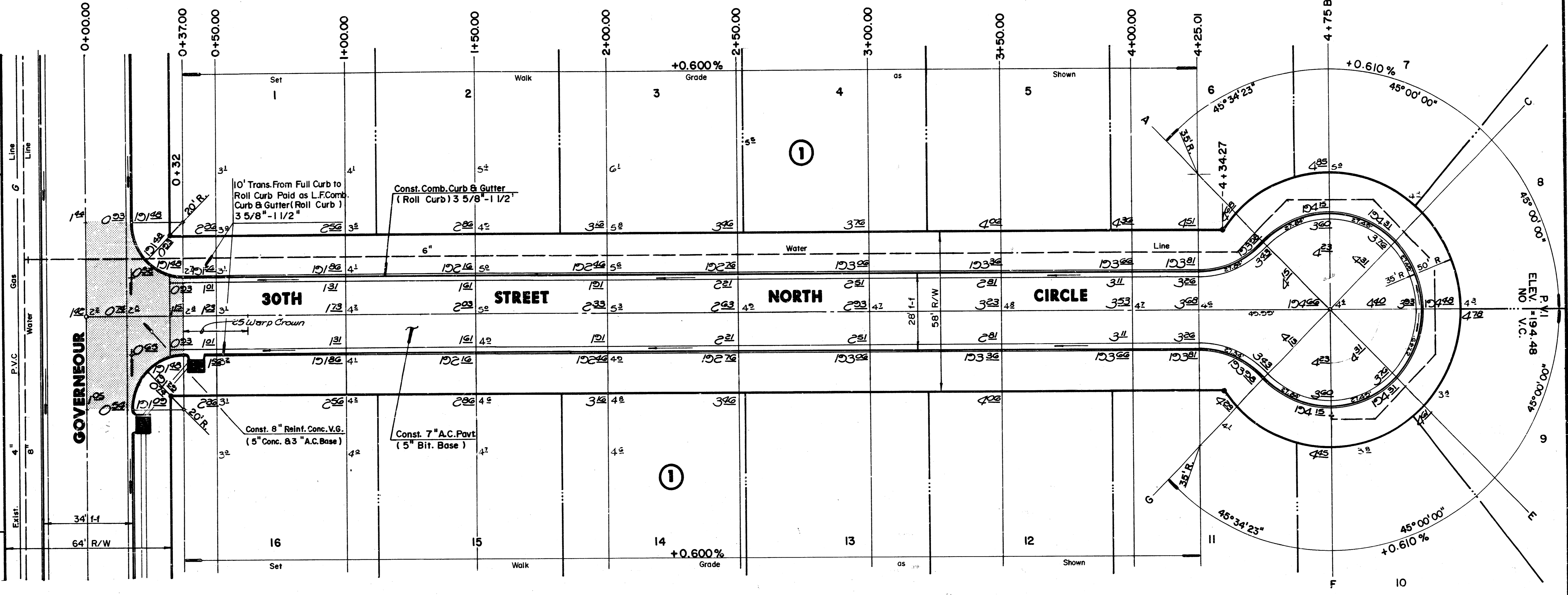


UNPLATTED

	CITY OF WICHITA		Design KKL / FF
	WINTERBERRY		Quantity DDG
PROJECT NO.		Checked by KHB	
472-76-245-81521 -000-000-001		Date March, 1987	
MID-KANSAS ENGINEERING CONSULTANTS PA 3500 NORTH ROCK ROAD BUILDING #800 WICHITA, KANSAS 67226		Sheet 8 / 15	
682-6561		of 15	



Scale : 1" = 20'



2

1

1

COTTONWOOD

VILLAGE

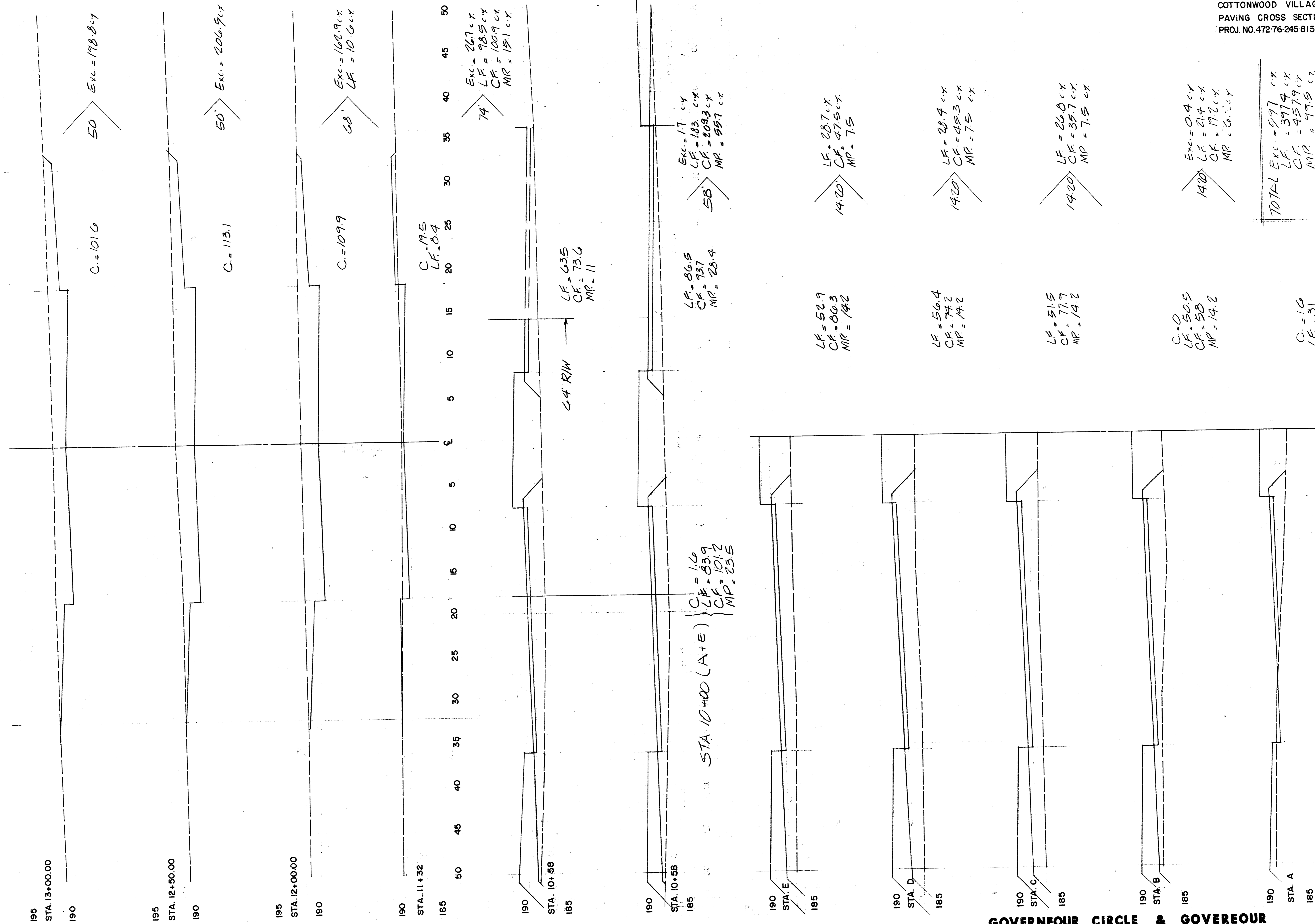
SIXTH

GOVERNEUR & 30TH STREET NORTH CIRCLE
INTERSECTION QUANTITIES

___	S.Y.	Concrete Pavement
113.3	S.Y.	8" Asphaltic Conc. Pavement (6" Bituminous Base)
13.5	S.Y.	7" Asphaltic Conc. Pavement (5" Bituminous Base)
___	L.F.	Combined Curb & Gutter
52.8	L.F.	Monolithic Edge Curb (6 5/8")
___	S.F.	4" Wheelchair Ramp
___	S.F.	4" Walk
___	C.Y.	Excavation
___	C.Y.	Compacted Fill
___	Lbs.	Reinforcing Steel
217.8	S.Y.	Manipulation
___	Tons	Lime or Cement
83.5	S.Y.	V.G. 5" Concrete & 3" Asphaltic Concrete Base
3	S.Y.	2 1/2" Bituminous Base

NOTE:
Top Of Curb Elevations Shown For
Full Curb, Construct Combined Curb
& Gutter (Roll Type).

	CITY OF WICHITA	Design KXL / F.F.
	30TH STREET NORTH CIRCLE	Drawn by DDG
	PROJECT NO. 472-76-245-81521 -000-000-001	Checked by KHB
MID-KANSAS ENGINEERING CONSULTANTS PA 3500 NORTH ROCK ROAD BUILDING 1800 WICHITA, KANSAS 67226		Date March, 1987
682-6561		Sheet 9 of 15



TOTAL

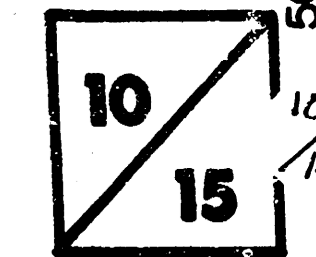
Exc.	= 997 cy
LF	= 3974 cy
CF	= 4579 cy
MP	= 979.5 cy

TOTAL PROJ

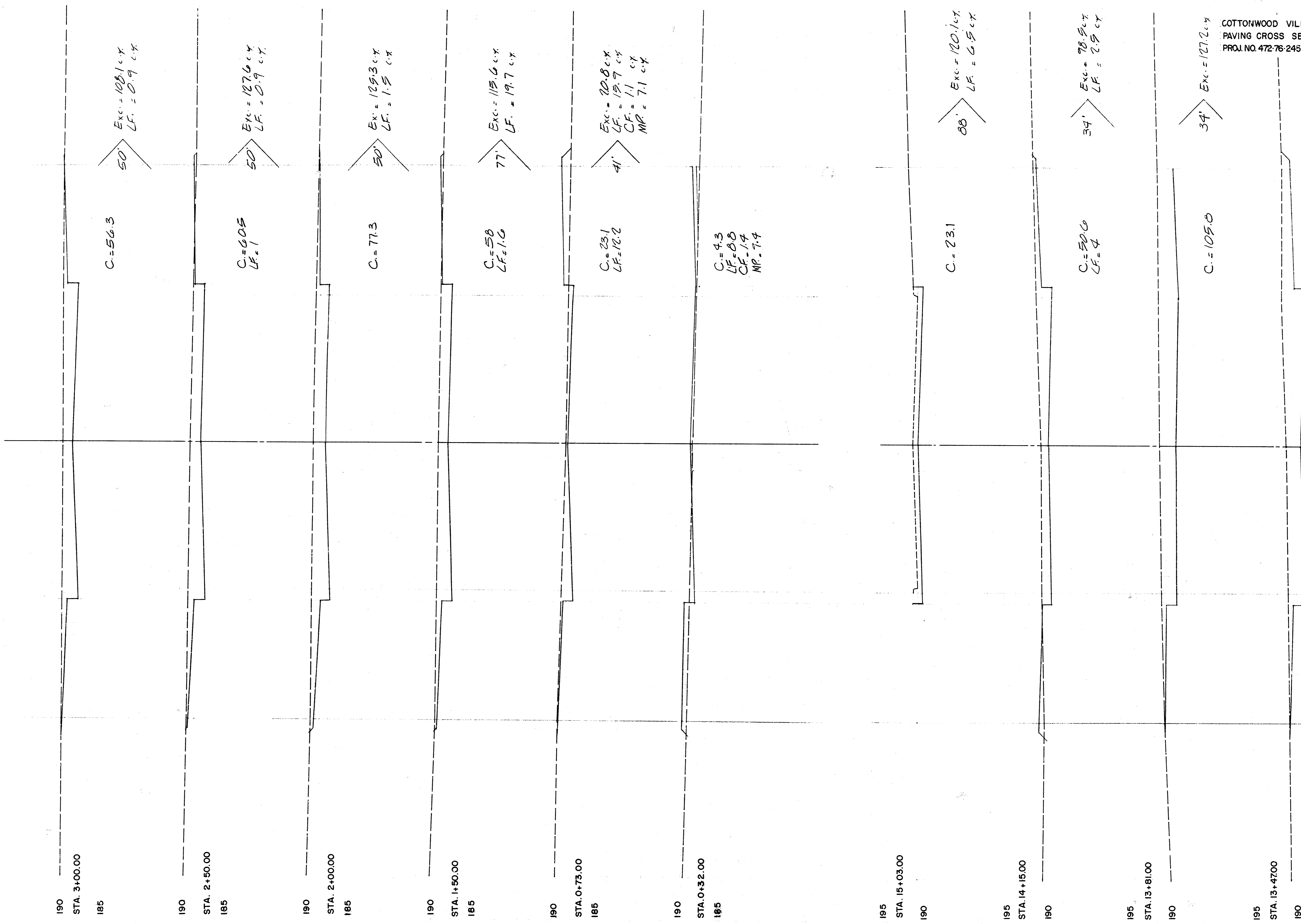
Exc.	= 5296.5 cy
LF	= 519.4 cy
CF	= 523.3 cy
MP	= 112.7 cy

C	= 1.6
LF	= 31
CF	= 14.9
MP	= 7.3

GOVERNEUR CIRCLE & GOVERNEUR



50
45
40
35
30
25
20
15
10
5
0
5
10
15
20
25
30
35
40
45
50

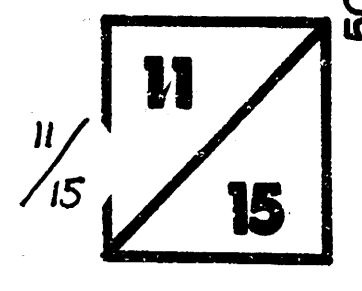


WINTERBERRY

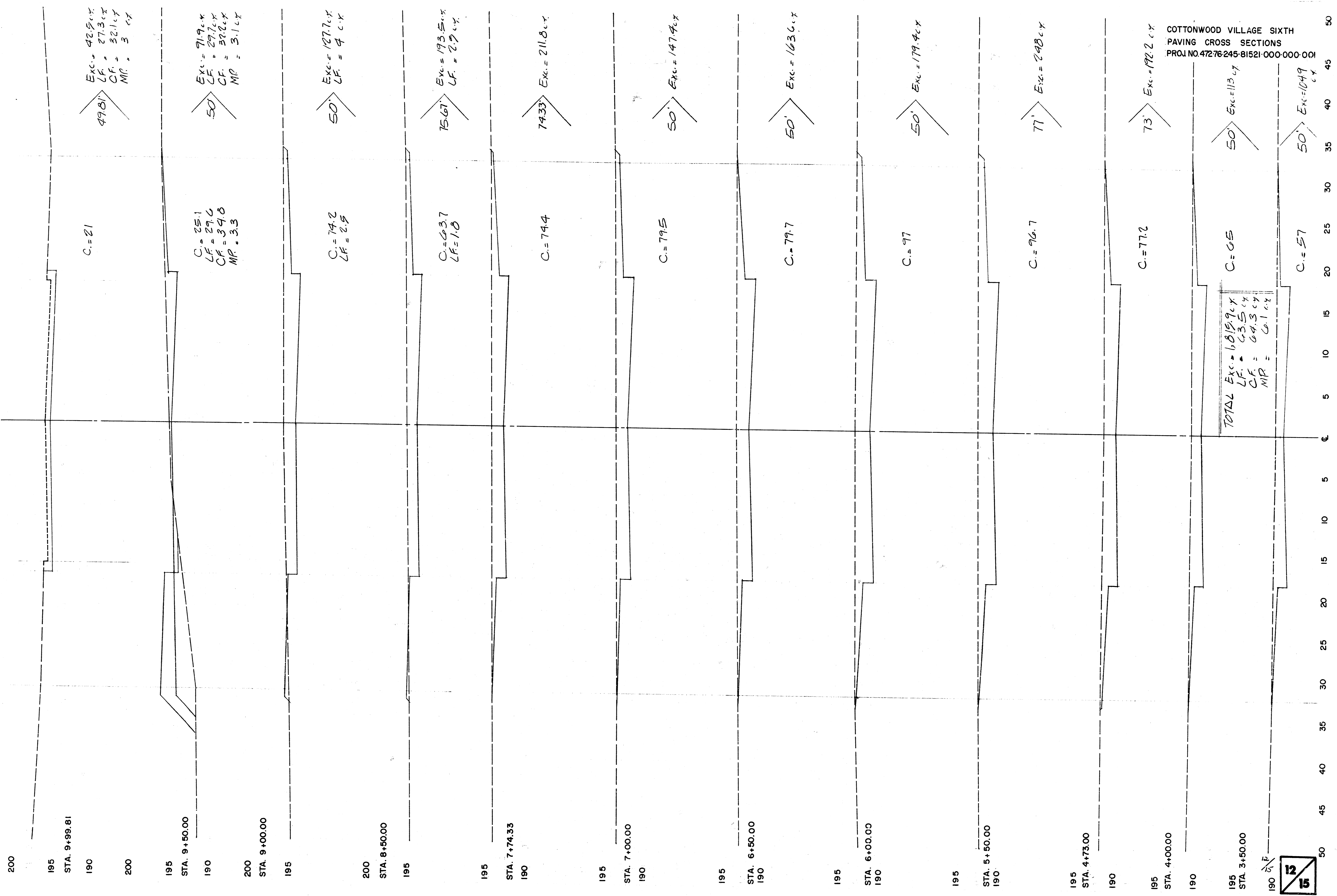
GOVERNEUR

COTTONWOOD VILLAGE SIXTH
 PAVING CROSS SECTIONS
 PROJ. NO. 472-76-245-81521-000-000-001

TOTAL Exc. = 1015.4 cy
 LF = 47.9 cy
 CF = 11 cy
 MR = 7.1 cy

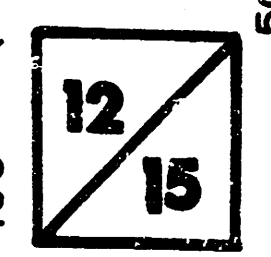


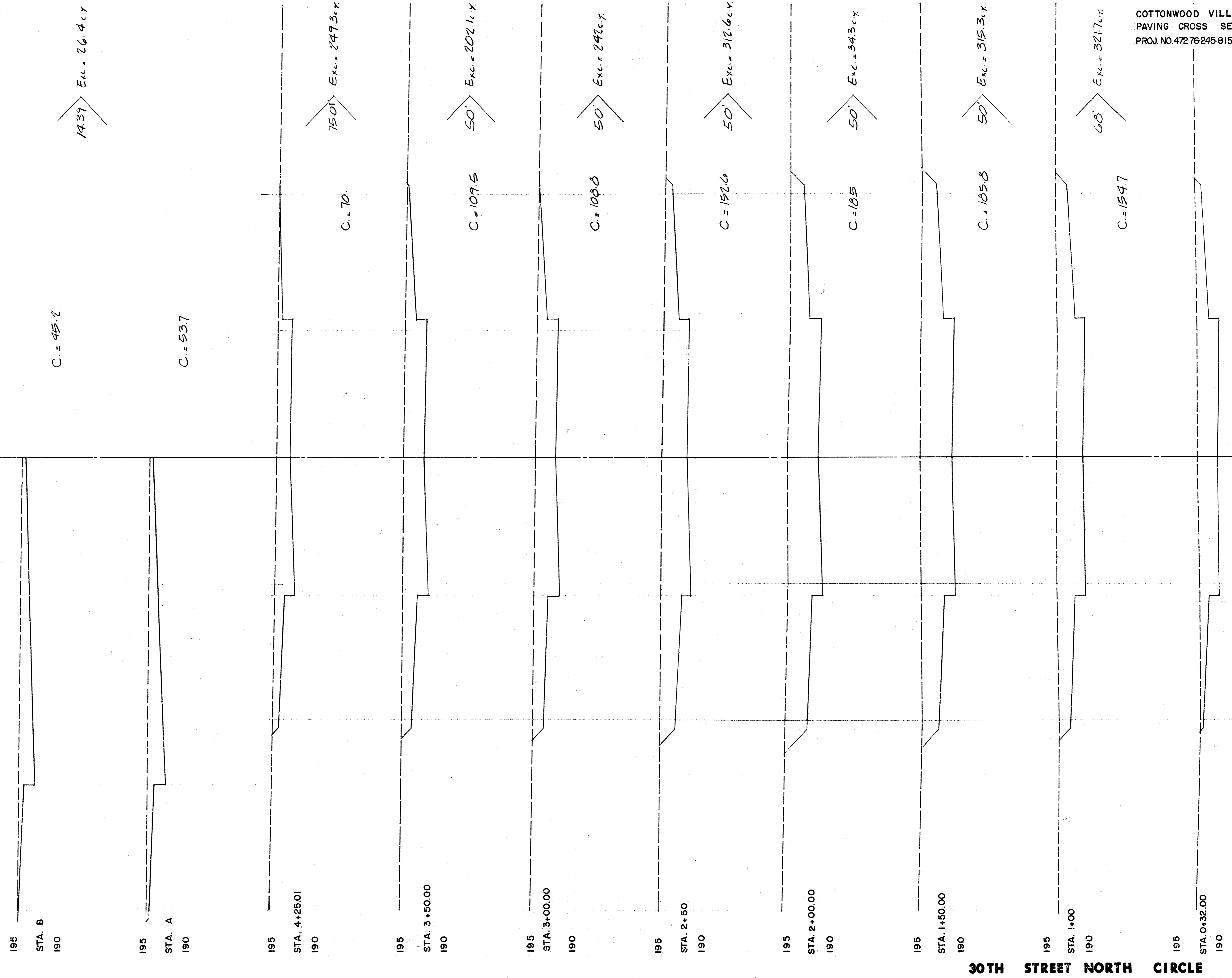
50 45 40 35 30 25 20 15 10 5 0 5 10 15 20 25 30 35 40 45 50



COTTONWOOD VILLAGE SIXTH
 PAVING CROSS SECTIONS
 PROJ. NO. 47276245-81521-000-000-001

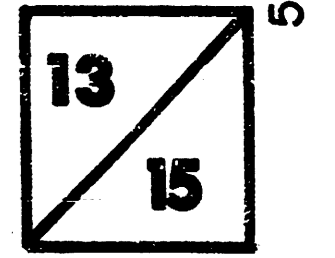
WINTERBERRY

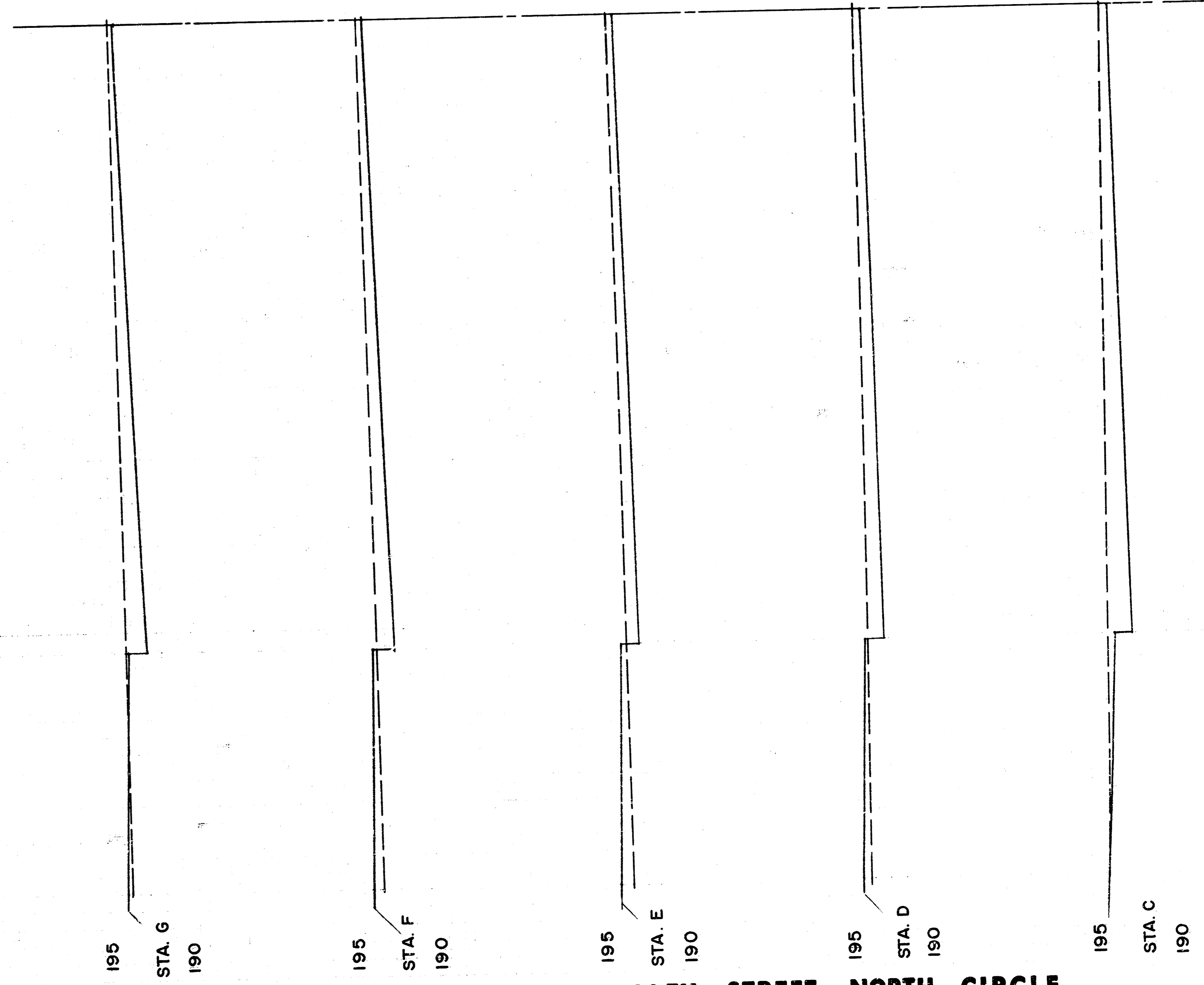
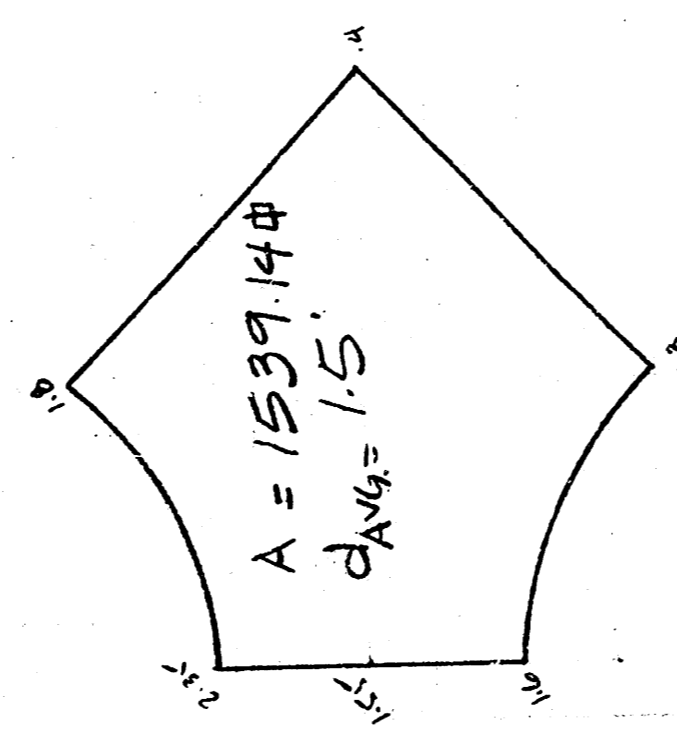




TOTAL Exc. = 1,703.7 c.y.

30TH STREET NORTH CIRCLE





30TH STREET NORTH CIRCLE

Exc. = 85.5 c.y.

C = 31
LF = 0.9

14.39' Exc. = 15 c.y.
LF = 1.9 c.y.

C = 25.3
LF = 6.4

14.20' Exc. = 12.4 c.y.
LF = 3.8 c.y.

C = 21.7
LF = 0

14.20' Exc. = 12.8 c.y.
LF = 3.3 c.y.

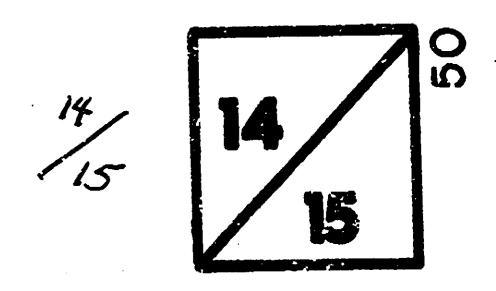
C = 27.1
LF = 4.7

14.20' Exc. = 17 c.y.
LF = 1.2 c.y.

C = 37.6

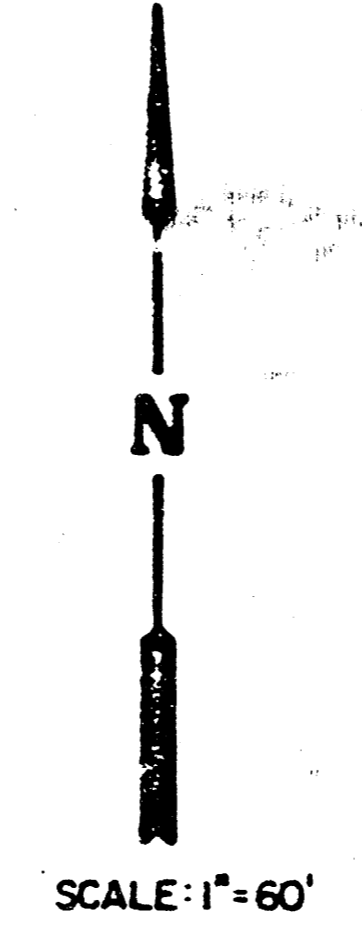
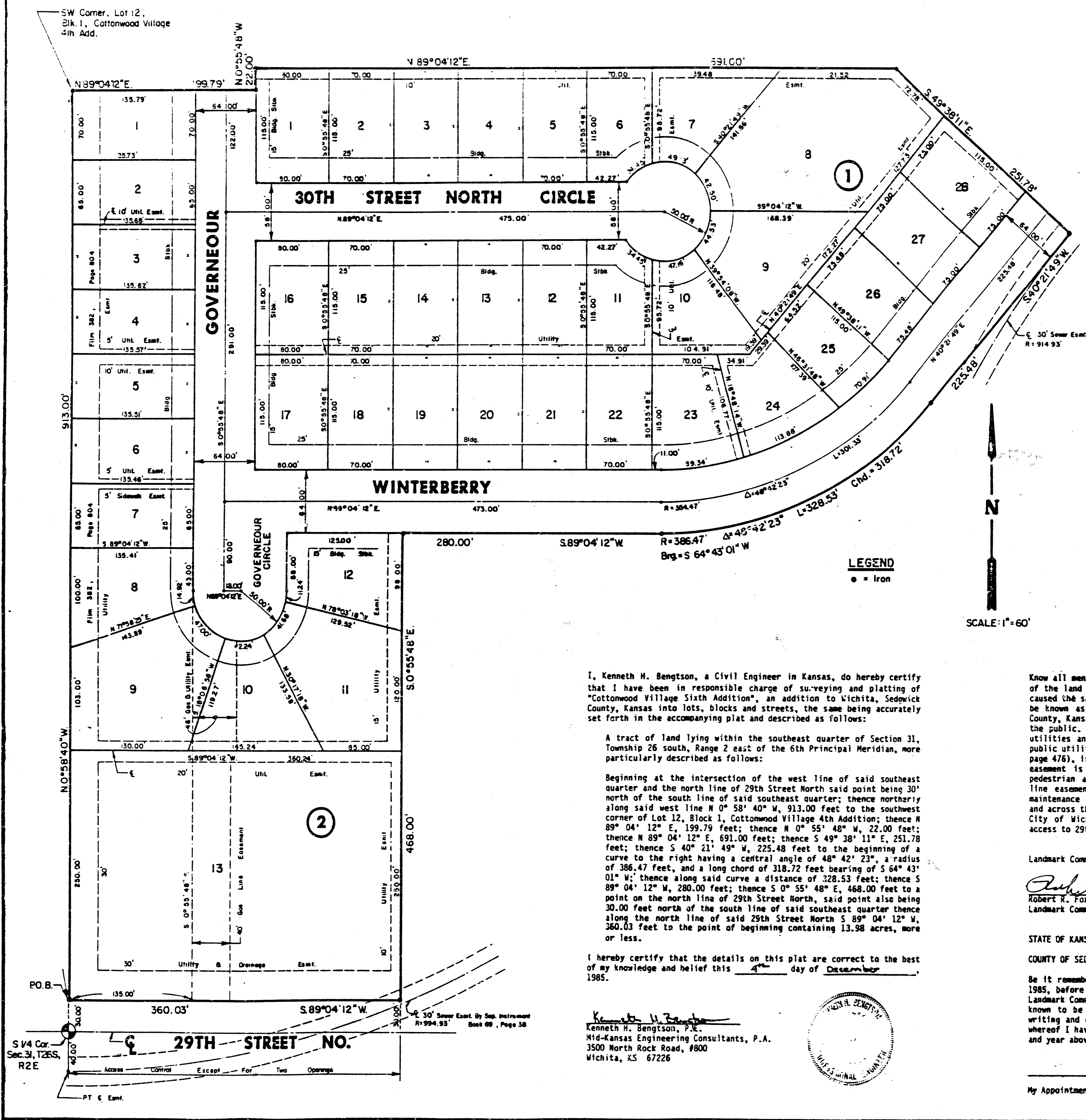
14.20' Exc. = 21.8 c.y.

TOTAL Exc. = 104.5 c.y.
LF = 10.2 c.y.



50
45
40
35
30
25
20
15
10
5
0
5
10
15
20
25
30
35
40
45
50

FINAL PLAT OF
COTTONWOOD VILLAGE SIXTH
 AN ADDITION TO WICHITA, SEDGWICK COUNTY, KANSAS



LEGEND
 • = Iron

I, Kenneth H. Bengtson, a Civil Engineer in Kansas, do hereby certify that I have been in responsible charge of surveying and platting of "Cottonwood Village Sixth Addition", an addition to Wichita, Sedgwick County, Kansas into lots, blocks and streets, the same being accurately set forth in the accompanying plat and described as follows:

A tract of land lying within the southeast quarter of Section 31, Township 26 south, Range 2 east of the 6th Principal Meridian, more particularly described as follows:

Beginning at the intersection of the west line of said southeast quarter and the north line of 29th Street North said point being 30' north of the south line of said southeast quarter; thence northerly along said west line N 0° 58' 40" W, 913.00 feet to the southwest corner of Lot 12, Block 1, Cottonwood Village 4th Addition; thence N 89° 04' 12" E, 199.79 feet; thence N 0° 55' 48" W, 22.00 feet; thence N 89° 04' 12" E, 691.00 feet; thence S 49° 38' 11" E, 251.78 feet; thence S 40° 21' 49" W, 225.48 feet to the beginning of a curve to the right having a central angle of 48° 42' 23", a radius of 386.47 feet, and a long chord of 318.72 feet bearing of S 64° 43' 01" W; thence along said curve a distance of 328.53 feet; thence S 89° 04' 12" W, 280.00 feet; thence S 0° 55' 48" E, 468.00 feet to a point on the north line of 29th Street North, said point also being 30.00 feet north of the south line of said southeast quarter thence along the north line of said 29th Street North S 89° 04' 12" W, 360.03 feet to the point of beginning containing 13.98 acres, more or less.

I hereby certify that the details on this plat are correct to the best of my knowledge and belief this 4th day of December, 1985.

Kenneth H. Bengtson
 Kenneth H. Bengtson, P.E.
 Mid-Kansas Engineering Consultants, P.A.
 3500 North Rock Road, #800
 Wichita, KS 67226



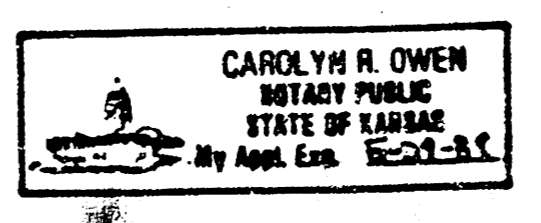
Know all men by these presents, that we the undersigned property owners of the land as above set forth in the Civil Engineers Certificate have caused the same to be platted into lots, blocks and streets, the same to be known as "Cottonwood Village Sixth Addition" to Wichita, Sedgwick County, Kansas. The streets are hereby dedicated to and for the use of the public. Easements for the construction and maintenance of public utilities and drainage are hereby granted. The existing 40-foot wide public utility easement, granted to provide for a gas line (on film 484, page 476), is being vacated by virtue of K.S.A. 12-512(b). The sidewalk easement is hereby granted to the public for purposes of providing pedestrian access to the property to the west. The 40-foot wide gas line easement in Block 2 is being platted for the construction and maintenance of a public gas line. All abutters rights of access over and across the north line of 29th Street North are hereby granted to the City of Wichita, provided however, that Lot 13, Block 2 shall have access to 29th Street North at two locations.

Landmark Communities, Inc.
Robert R. Fox
 Robert R. Fox, President
 Landmark Communities, Inc.

STATE OF KANSAS
 COUNTY OF SEDGWICK

Be it remembered that on this 14th day of December, 1985, before me, a Notary Public in and for said State and County, came Landmark Communities, Inc. by Robert R. Fox, President, to me personally known to be the same person who executed the foregoing instrument of writing and duly acknowledged the execution of the same. In testimony whereof I have hereunto set my hand and affixed my notarial seal the day and year above written.

Carolyn R. Owen Notary Public
 My Appointment Expires: 5-29-87



we, the Fourth National Bank & Trust, Wichita, Kansas, mortgagees on the above described property do hereby consent to the plat of "Cottonwood Village Sixth Addition".

The Fourth National Bank & Trust, Wichita, Kansas

By: *J.D. Newman*
 J.D. Newman

STATE OF KANSAS
 COUNTY OF SEDGWICK

Be it remembered that on this 4th day of December, 1985 before me, a Notary Public in and for said State and County, came Fourth National Bank & Trust, Wichita, Kansas, by J.D. Newman, to me personally known to be the same person who executed the foregoing instrument of writing and duly acknowledged the execution of the same. In testimony whereof I have hereunto set my hand and affixed my notarial seal the day and year above written.

Connetta L. Decker Notary Public

My appointment Expires: *Connetta L. Decker*
 STATE NOTARY PUBLIC
 Sedgwick County, Kansas
 My App. Exp. 6/2/87

This plat of "Cottonwood Village Sixth Addition" has been submitted to and approved by the Wichita-Sedgwick County Metropolitan Area Planning Commission, Wichita, Kansas.

Dated this 14th day of November, 1985

Wichita-Sedgwick County Metropolitan Area Planning Commission

William J. Gosnell Chairman
 William J. Gosnell

Michael E. Linoebas Secretary
 Michael E. Linoebas

This plat approved and all dedications shown hereon, if any, accepted by the City Commission of the City of Wichita, Kansas this 17th day of December, 1985.

Robert C. Brown Mayor
 Robert C. Brown

Donald C. Gistic City Clerk
 Donald C. Gistic

Entered on transfer record this 18 day of December, 1985.

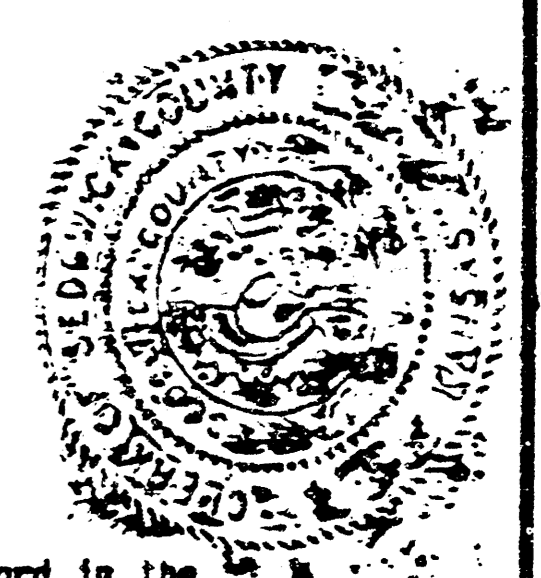
Don Wright County Clerk
 Don Wright

STATE OF KANSAS
 SEDGWICK COUNTY

This is to certify that this instrument was filed for record in the Register of Deeds Office at 11:30 AM on the 14th day of December, 1985.

Pat Kettler Register of Deeds
 Pat Kettler

Ed Resa Deputy
 Ed Resa



14 15 15