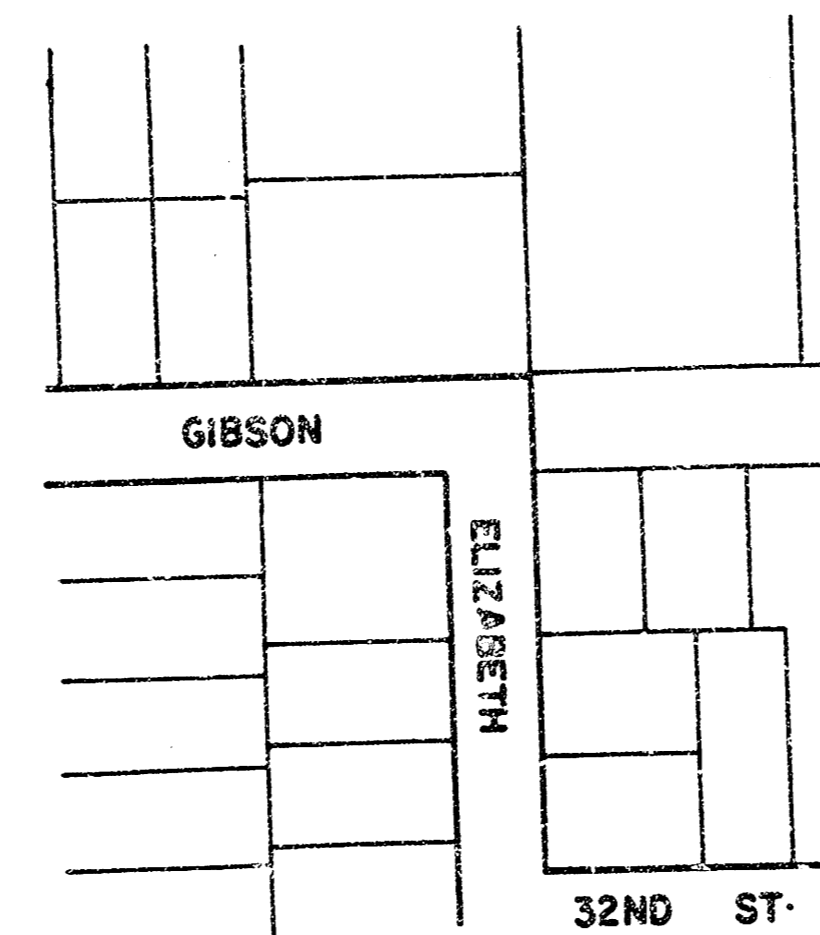


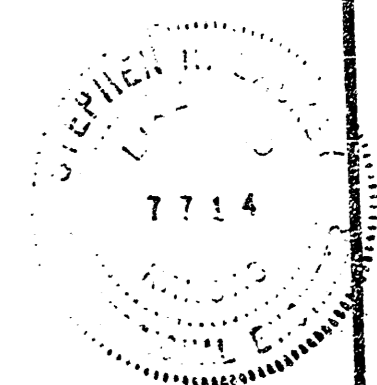
ELIZABETH & GIBSON  
S·L· Lot 2 Blk·1 Bassett Add· To E·L· Blk·2  
Carlans Add·



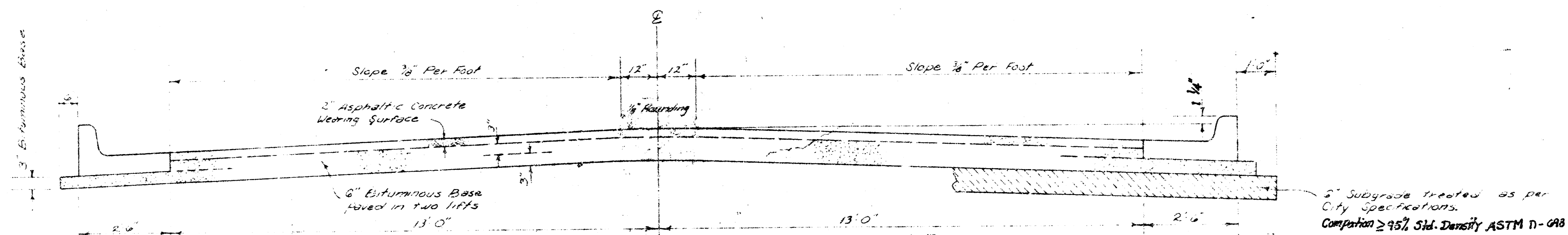
City Of Wichita, KS·

R·W· Bruggeman Director Of Engineering/City Engineer

Proj· No· 472-76-245-80681-000-000-001



1/4



### TYPICAL SECTION

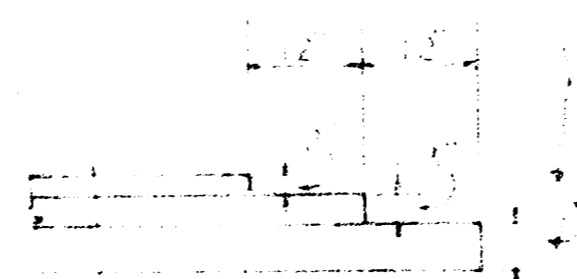
#### 31' ASPHALTIC CONCRETE PAVEMENT WITH BITUMINOUS BASE

A TACK COAT OF EMULSIFIED ASPHALT (SS-1H) SHALL BE APPLIED AT AN APPROXIMATE RATE OF 0.05 GALLONS PER SQ YD BETWEEN LIFTS OF ASPHALTIC MATERIALS WHEN ORDERED BY THE ENGINEER. TACK COAT WILL NOT BE PAID FOR DIRECTLY AND SHALL BE CONSIDERED AS SUBSIDIARY TO PRICE BID FOR ASPHALTIC PAVEMENT.

BITUMINOUS BASE AND ASPHALTIC CONCRETE WEARING SURFACE SHALL BE PLACED WITH A LAYDOWN MACHINE HAVING AUTOMATIC CONTROLS FOR CROWN AND GRADE. CONSTRUCTION JOINTS IN EACH LIFT SHALL BE STAGGERED A MINIMUM DISTANCE OF 1' WITH JOINTS IN PRECEDING LIFTS AND SUCH THAT A JOINT WILL BE CONSTRUCTED ON THE PAVEMENT CENTERLINE IN THE TOP LIFT.

*The A.C. pavement between the Comb. Curb & Gutter shall be paid as 3 1/2 lbs. 3" A.C. Pavement (6 Bituminous Base). The Bituminous Base under the Comb. Curb & Gutter shall be paid as 3 1/2 lbs. 3" Bituminous Base.*

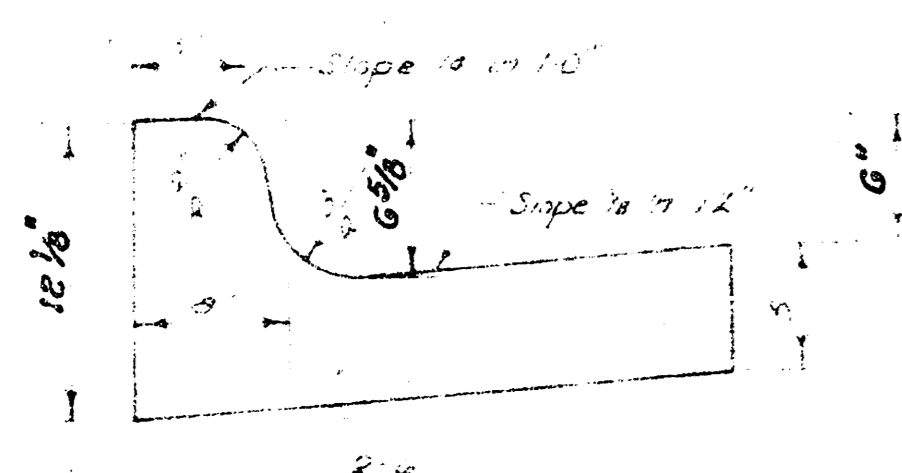
#### DETAIL OF TRANSVERSE CONSTRUCTION JOINTS



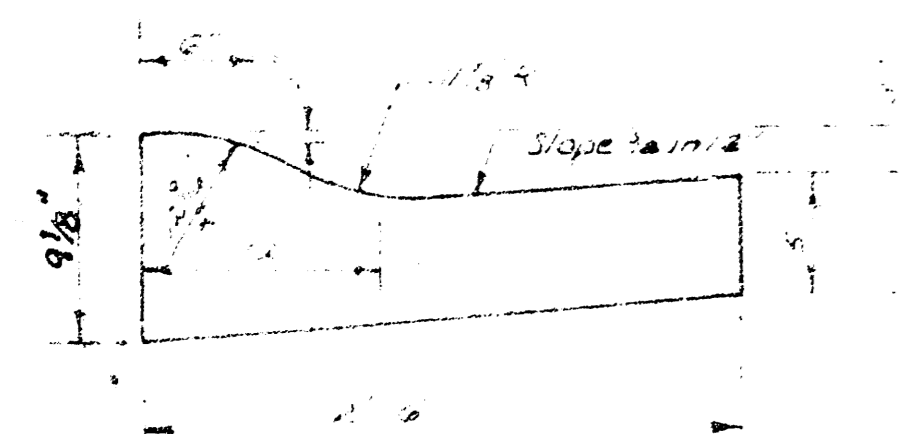
TRANSVERSE CONSTRUCTION JOINTS SHALL BE CONSTRUCTED IN FLEXIBLE BASE PAVEMENTS AT LOCATIONS WHERE PAVEMENT TEMPORARILY ENDS TO FACILITATE FUTURE PAVEMENT CONSTRUCTION AS SHOWN BY DETAIL. THE COST OF CONSTRUCTING THE TRANSVERSE CONSTRUCTION JOINTS SHALL NOT BE MEASURED OR PAID FOR DIRECTLY BUT SHALL BE INCLUDED IN THE BID PRICE FOR SQUARE YARDS OF ASPHALTIC CONCRETE PAVEMENT.

CITY OF WICHITA, KANSAS

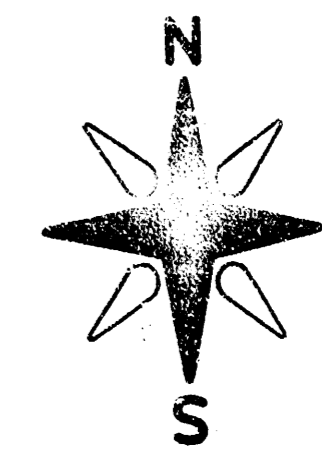
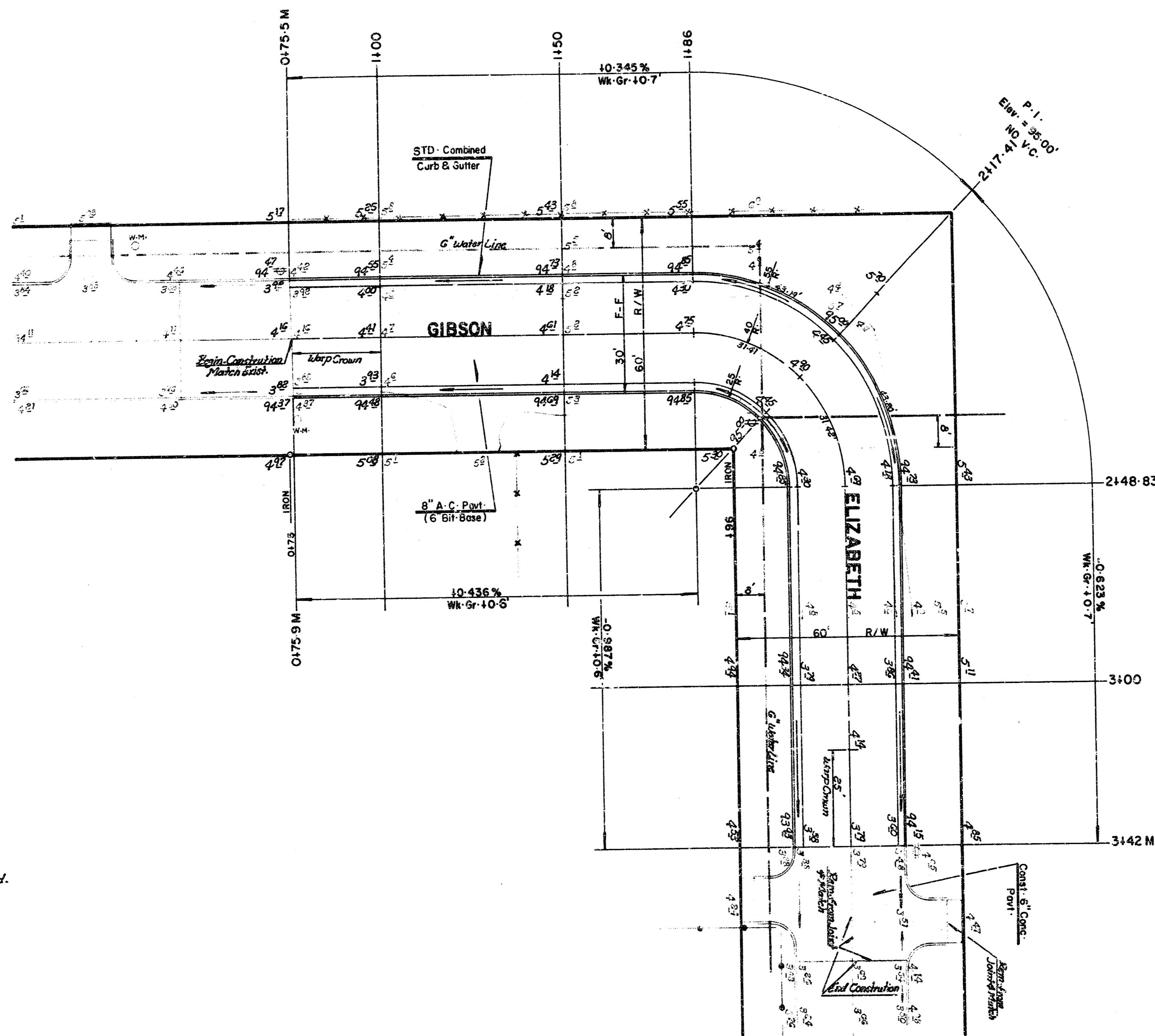
COMBINED CURB & GUTTER



ROLL TYPE CURB & GUTTER



B.M. = 95-88 Seneca & 31st ST. South City STD. Disc., 6' E.  
 2' S. Of S.W. Cor.  
 B.M. = 96-11 S.E. Cor. Of Porch at # 3243 S. Elizabeth



SCALE: 1" = 20'

*Notes:*  
 No More Than (1-12', 1-20') Driveways Approaches Or The Equivalent To Be Constructed.

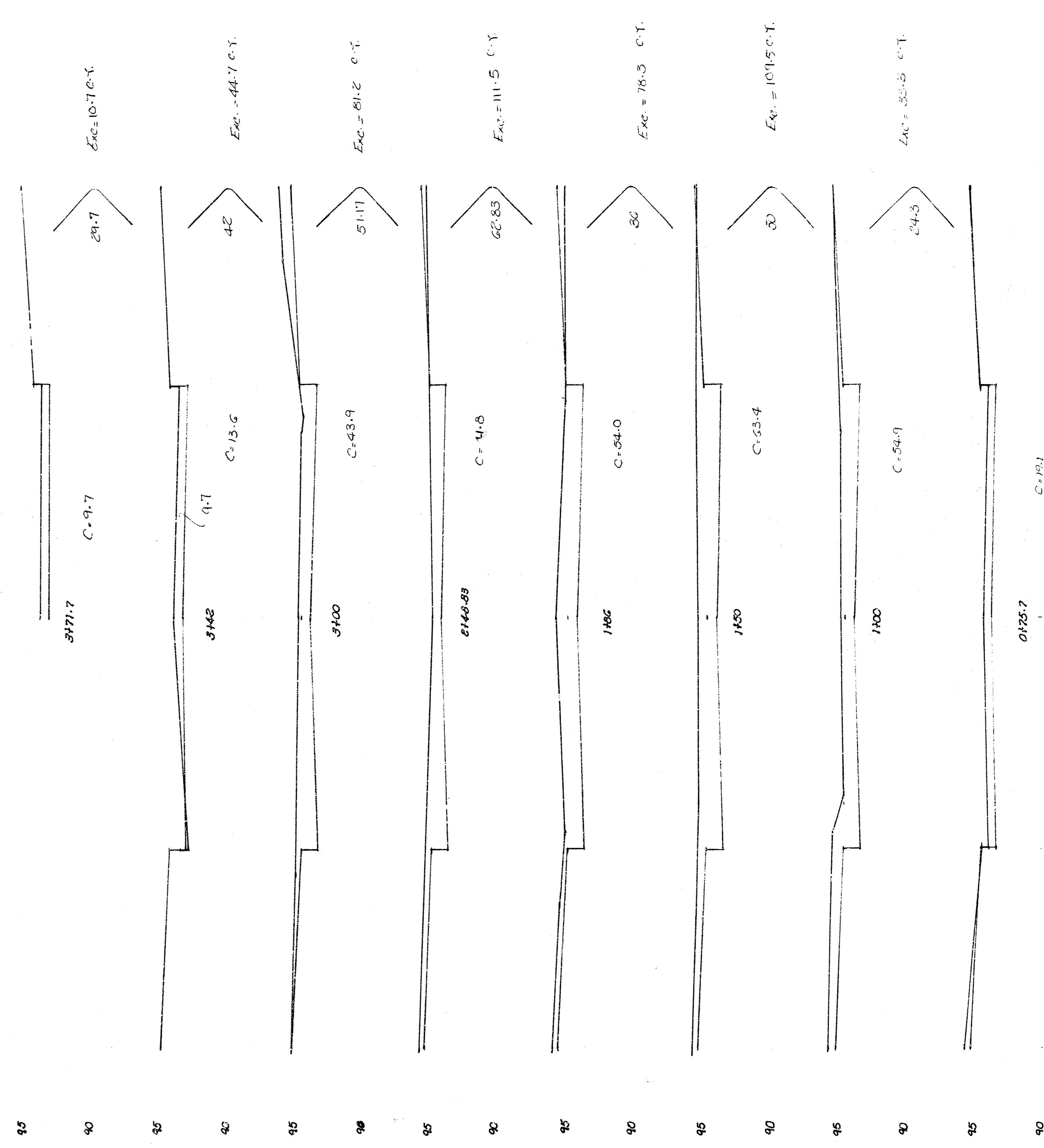
	Prop.	City
Excavation	449.30 CY.	19.90 CY.
+10%	44.93	1.99
Total	494.23 CY.	21.89 CY.

**CAUTION**  
 UNDERGROUND  
 UTILITIES  
 EXIST AT THIS LOCATION  
 See Specifications for  
 Subsurface Job  
 Telephone Co. for Location

**SUB-GRADE**  
 TYPE OF SUB-GRADE TREATMENT SHALL BE DETERMINED BY THE FIELD ENGINEER. SUB-GRADE TREATMENT MAY CONSIST OF LIME TREATMENT, CEMENT TREATMENT, SOIL-GRADE MODIFICATION, OR ANY COMBINATION OF THESE.

THE CONTRACTOR SHALL BE RESPONSIBLE FOR PRESERVING PROPERTY IRONS. THE CONTRACTOR SHALL BE REQUIRED TO RE-ESTABLISH ANY PROPERTY IRONS WHICH ARE DAMAGED OR DESTROYED BY HIS CONSTRUCTION OPERATIONS. SUCH IRONS SHALL BE RE-ESTABLISHED BY A LICENSED LAND SURVEYOR OR A LICENSED PROFESSIONAL ENGINEER IN ACCORDANCE WITH STATE LAW.

Bl. 170-50  
 Survey, Gravel  
 Plan No. 170-50  
 1988



$Exc = 107.0 \text{ c.y.}$   
 $Exc = 44.7 \text{ c.y.}$   
 $Exc = 81.2 \text{ c.y.}$   
 $Exc = 111.5 \text{ c.y.}$   
 $Exc = 78.3 \text{ c.y.}$   
 $Exc = 109.5 \text{ c.y.}$   
 $Exc = 35.5 \text{ c.y.}$   
 $Exc = 469.2 \text{ c.y.}$   
 $Exc = 19.1 \text{ c.y.}$

Gilson & Elizabeth

10 2 4 11

4/4