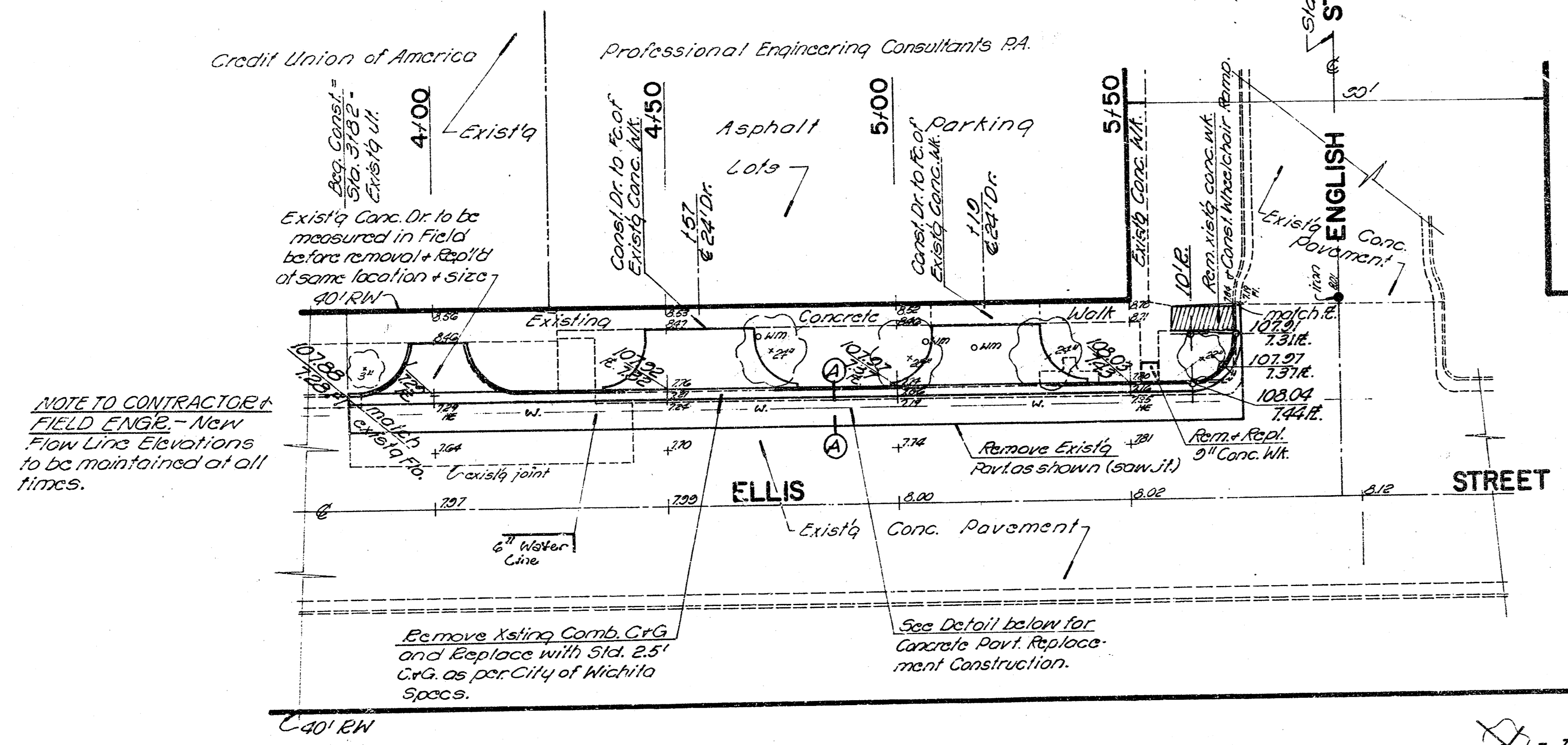
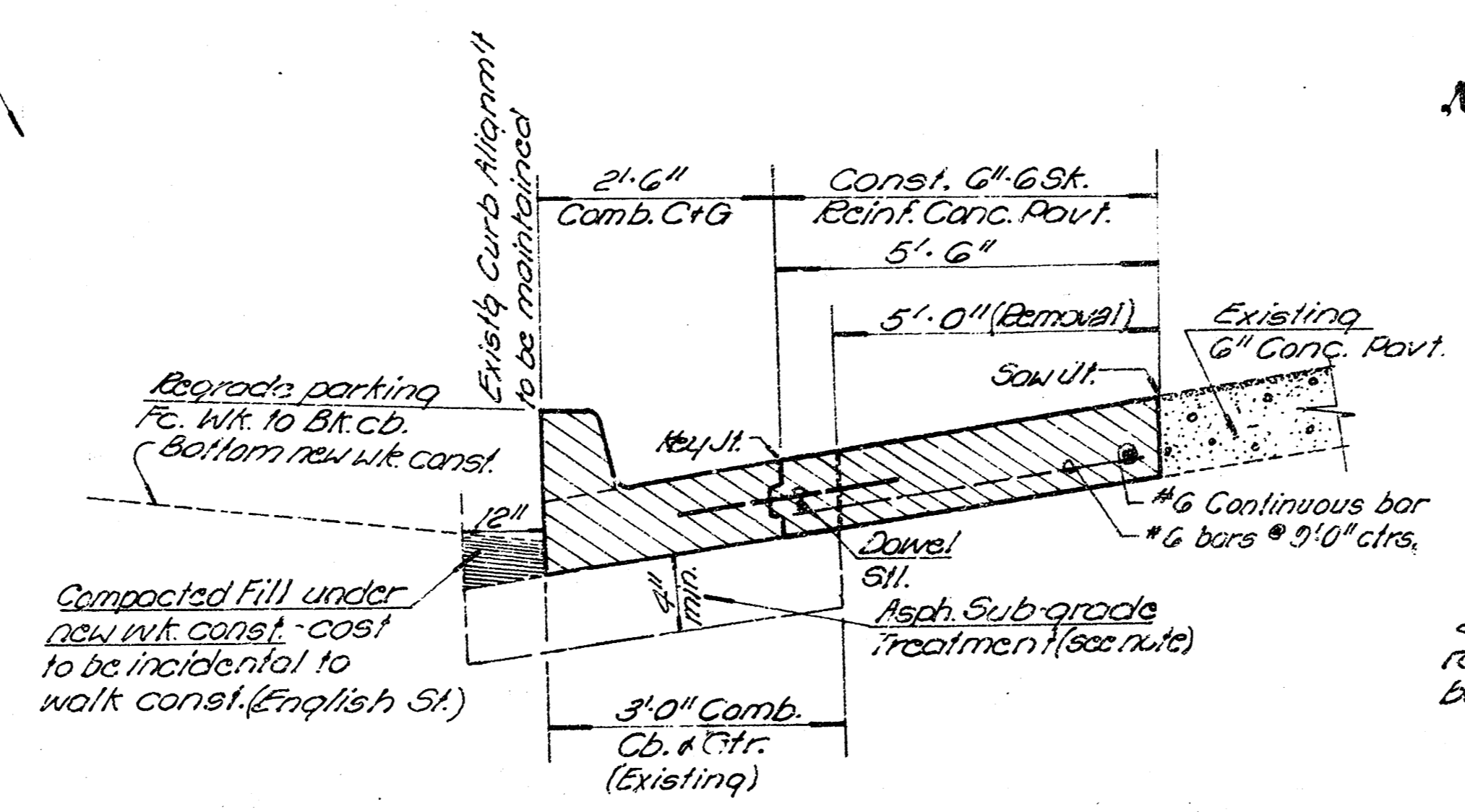


BM = 109.68 Top wall S.E. Cor. of brick wall behind Sdwk. in front of Credit Union of America.
 BM = 110.27 "M" in Mueller, Fire Hyd. NW. Cor. Ellis + English.



- = Tree Removal
- = Removal

- Note - 1. Contractor to use caution when removing existing Conc. Pavement in order to retain any existing reinforcing steel bars in place to tie to the new pavement.
 2. Existing Curb & Gutter is to be considered as S.V. Pavement Removed.



.. SUBGRADE ..
 Soft spots in C&G sub-grade to be removed & replaced with a min. of 4" (Commercial Grade) Asphalt. Asp. shall be placed as soon as possible after removal of existing Comb. Cr. + Gtr. The Asphalt to be bid as "True Asphalt".

**SECTION THRU
 NEW CONSTRUCTION**

NOTE - All Construction on this project to be in accordance with the City of Wichita Specs.

ELLIS STREET
 S.L. ENGLISH ST. to 165' So. S.L. ENGLISH ST.
COMBINED CURB & GUTTER

PROFESSIONAL ENGINEER CONSULTANTS P.A.
 E.W. Linn
 Seal
 G. B. 80