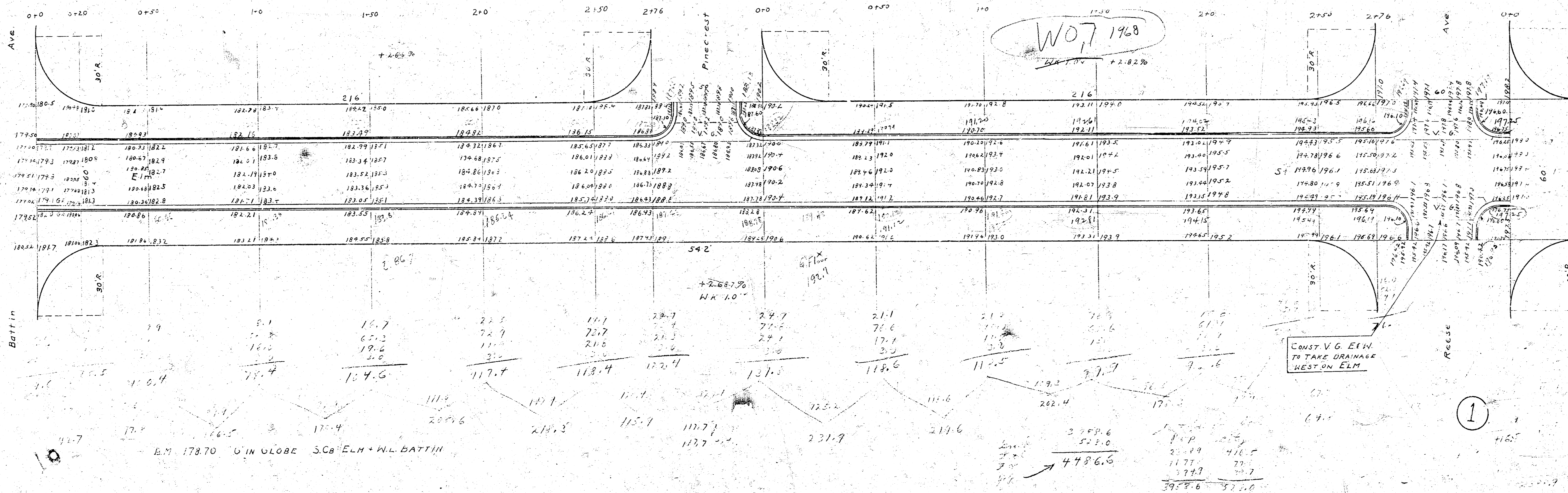
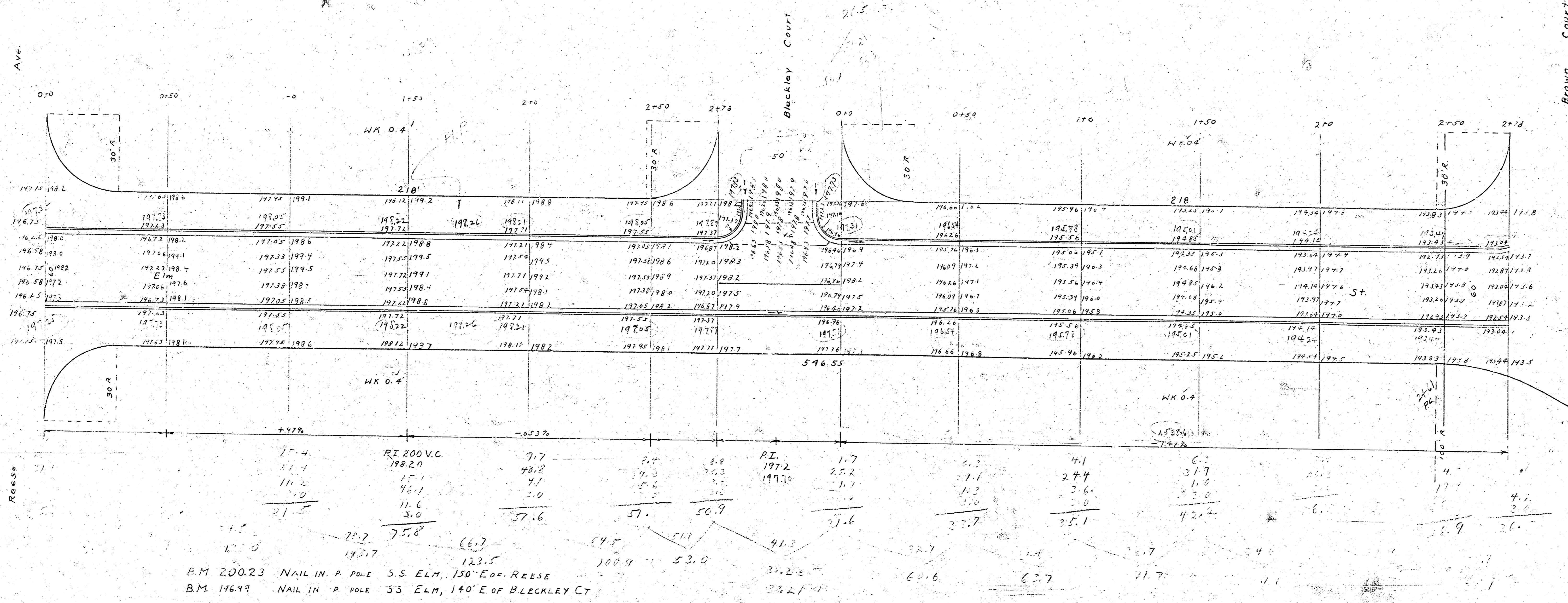


1942
 Elm St. - E.L. Battin - W.L. Miller
 Cb & Gtr Only

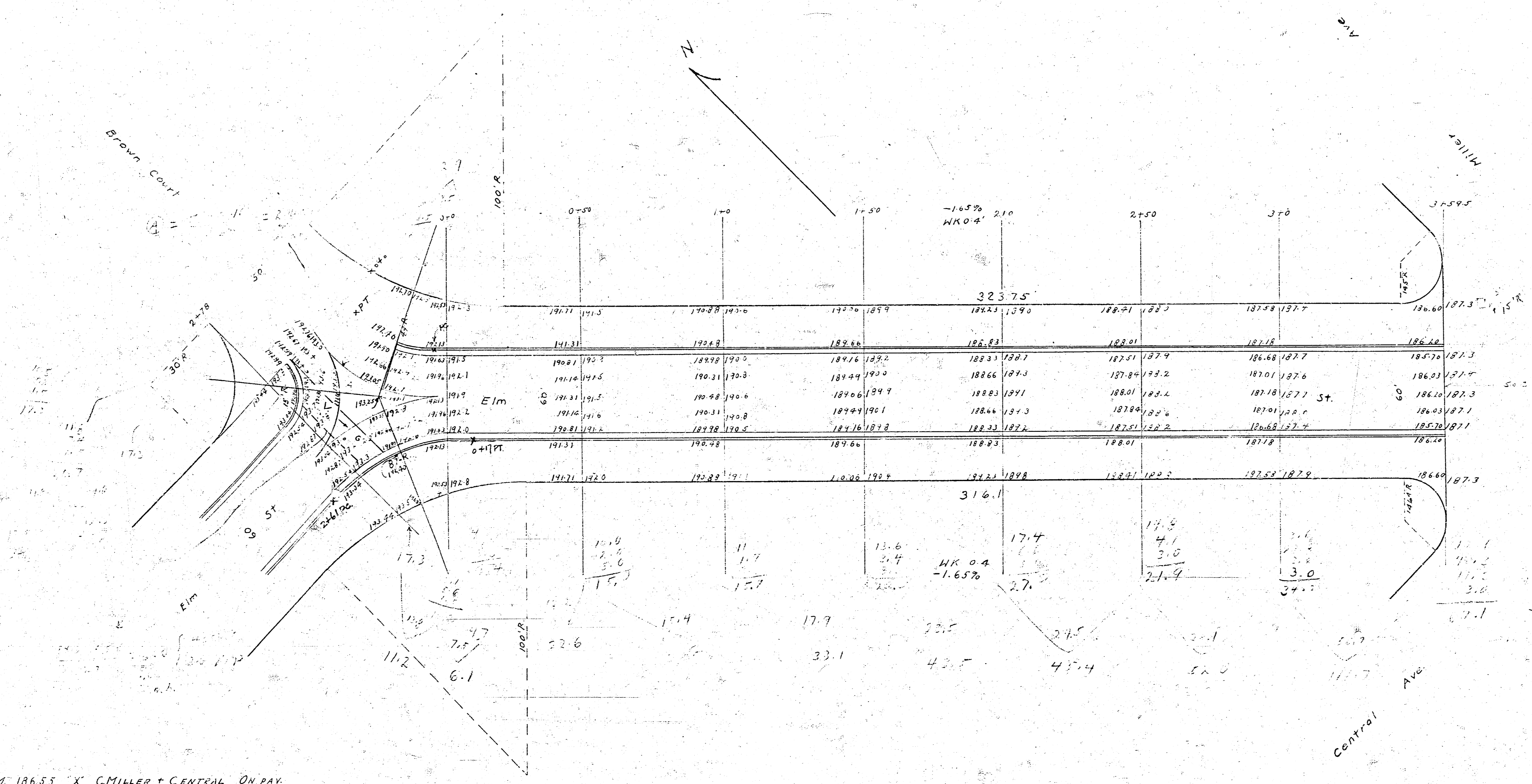
NOTE: GRADUATE W.A. ON
 N.S. FROM D. 4 AT BATTIN
 TO NO. AT PIN-CREST





B.M. 20023 NAIL IN P. POLE S.S. ELM, 150° E of REESE
 B.M. 14699 NAIL IN P. POLE S.S. ELM, 140° E of BLECKLEY CT

BM 18655 'X' MILLER + CENTRAL ON PAV.



3