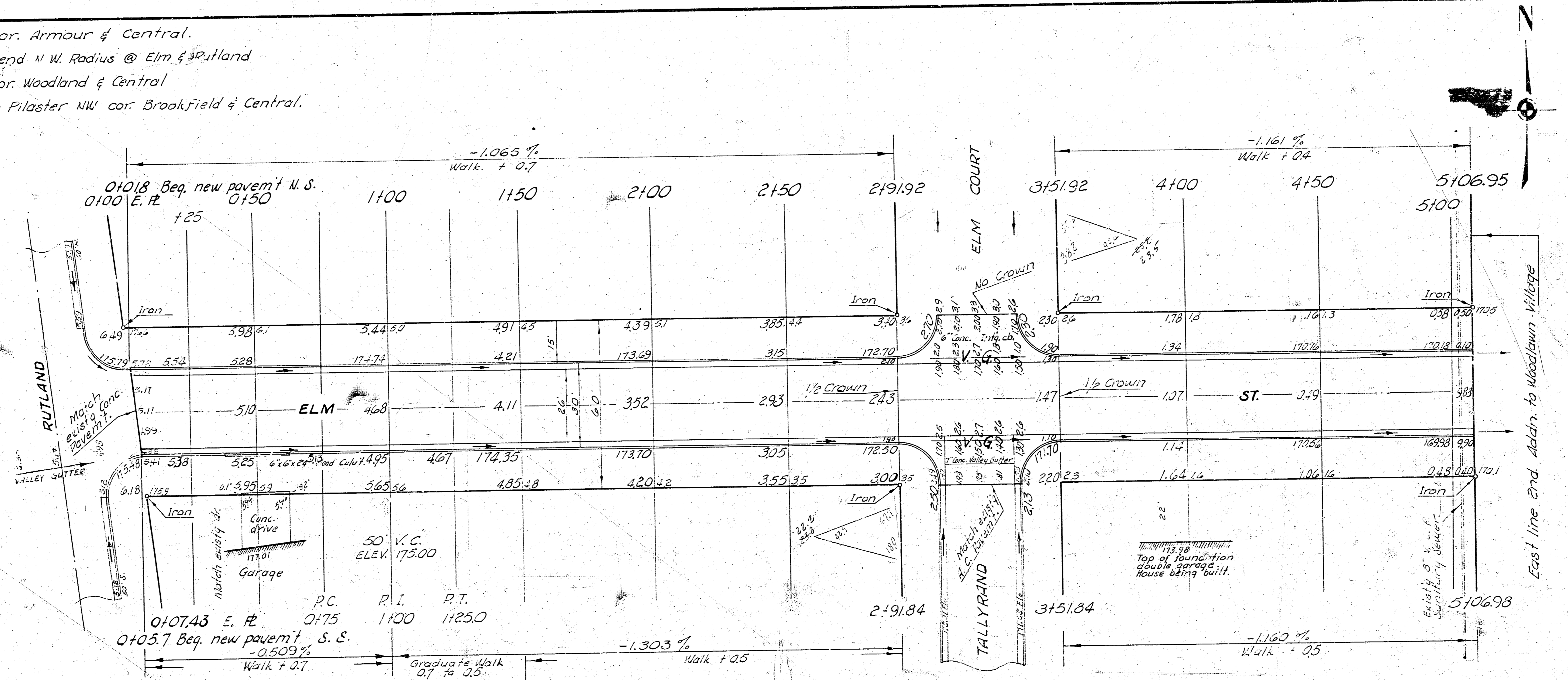


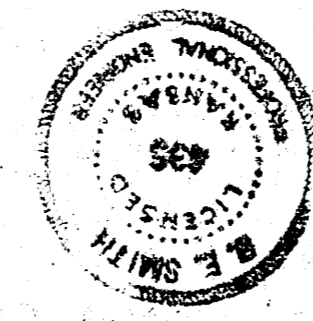
B. M. 181.114 City Std. NE cor. Armour & Central.
 B. M. 176.50 "R" in Ritchie N. end N.W. Radius @ Elm & Rutland
 B. M. 192.154 City Std. N.W. cor. Woodland & Central
 B. M. 184.62 S.W. cor. of stone Pilaster NW cor. Brookfield & Central.
 Baseline on N. Prop. Line.

NOTE:
 Use these bench marks and elevation as shown.



EARTHWORK

Excavation		Fill Comp.	
City	Prop.	City	Prop.
142.5	652.0	1.1	26.7
14.3	65.6	0.1	2.7
157.4	721.6	1.2	29.4 Cu. yds.



ELM ST.
 EL RUTLAND TO EL 2ND ADDN.
 TO WOODLAWN VILLAGE
 26'-2"-30'-A.C.
 CITY OF WICHITA, KANSAS
 B. E. SMITH CITY ENGINEER
 APRIL 1961, PROJ. NO. C18-170