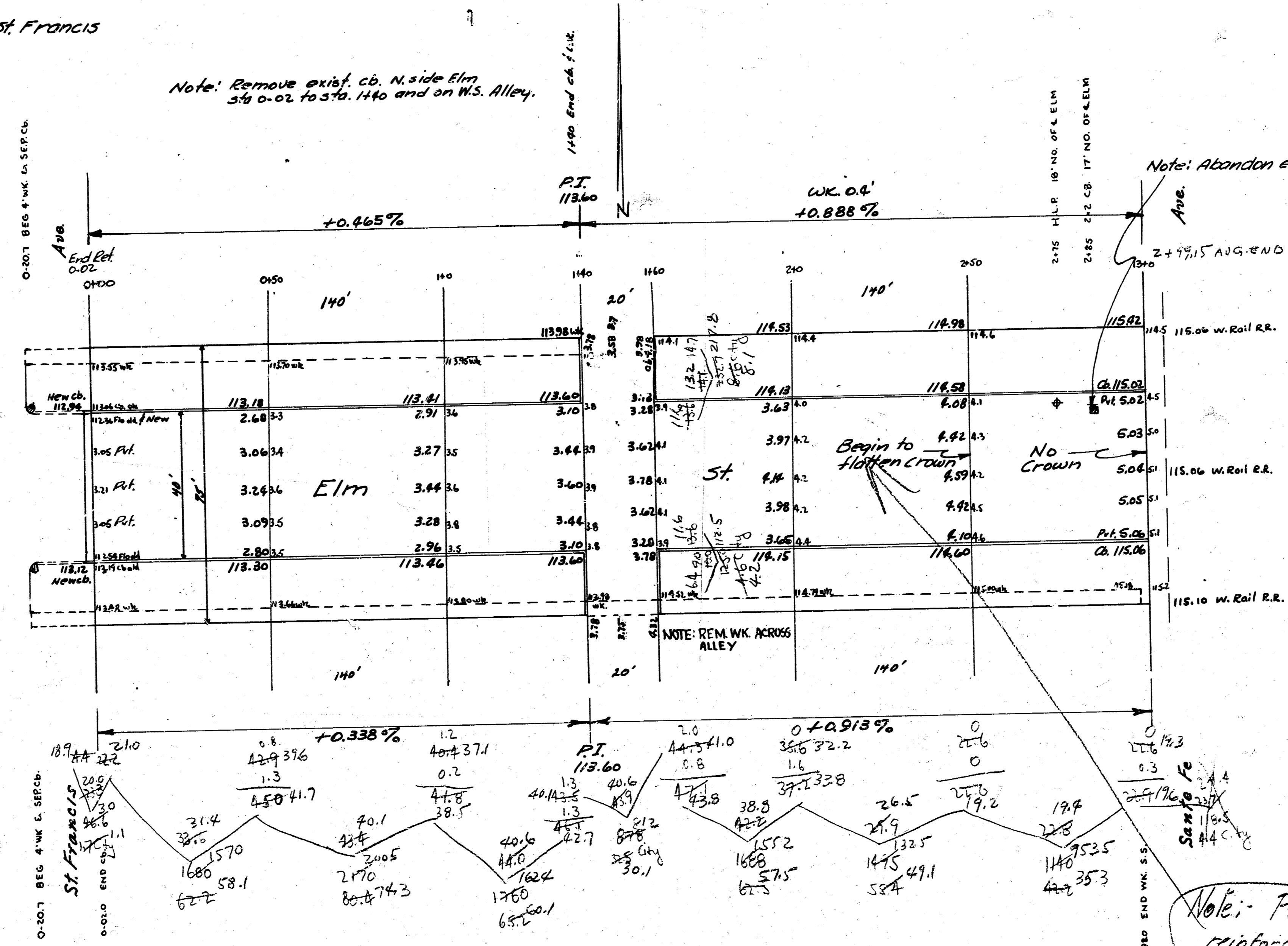


Book 774

B.M. 115.35 "F" in Feb. top of Hyd. N.W. Cor. Elm & St. Francis

Note: Remove exist. cb. N. side Elm
3/4 0-02 to 3/4 0-140 and on W.S. Alley.

Note: Abandon exist. C.B.



Note: Begin raising pvt. at Sta. 2+50
and have pvt. flush with cb.
at Sta. 3+00

Excav. Equip. for 7' Conc.

Prop.	City
62.2	1.7
80.4	37.5
65.2	4.6
62.5	8.6
55.4	4.4
42.2	51.8
	+10%
367.9	570 cu yd
+10%	-5.3 cu yd
104.7 cu yd	570 cu yd
-39.8 cu yd	
367.9 cu yd	

Note: Place transverse
reinforcing bars in usual
pattern

Elm St
 EL. St. Francis — W.L. Santa Fe.
 40' Conc. & Cb.
 6" Conc.
 City of Wichita, Kansas
 L.H. White City Engineer
 January 1929 Project 018-170