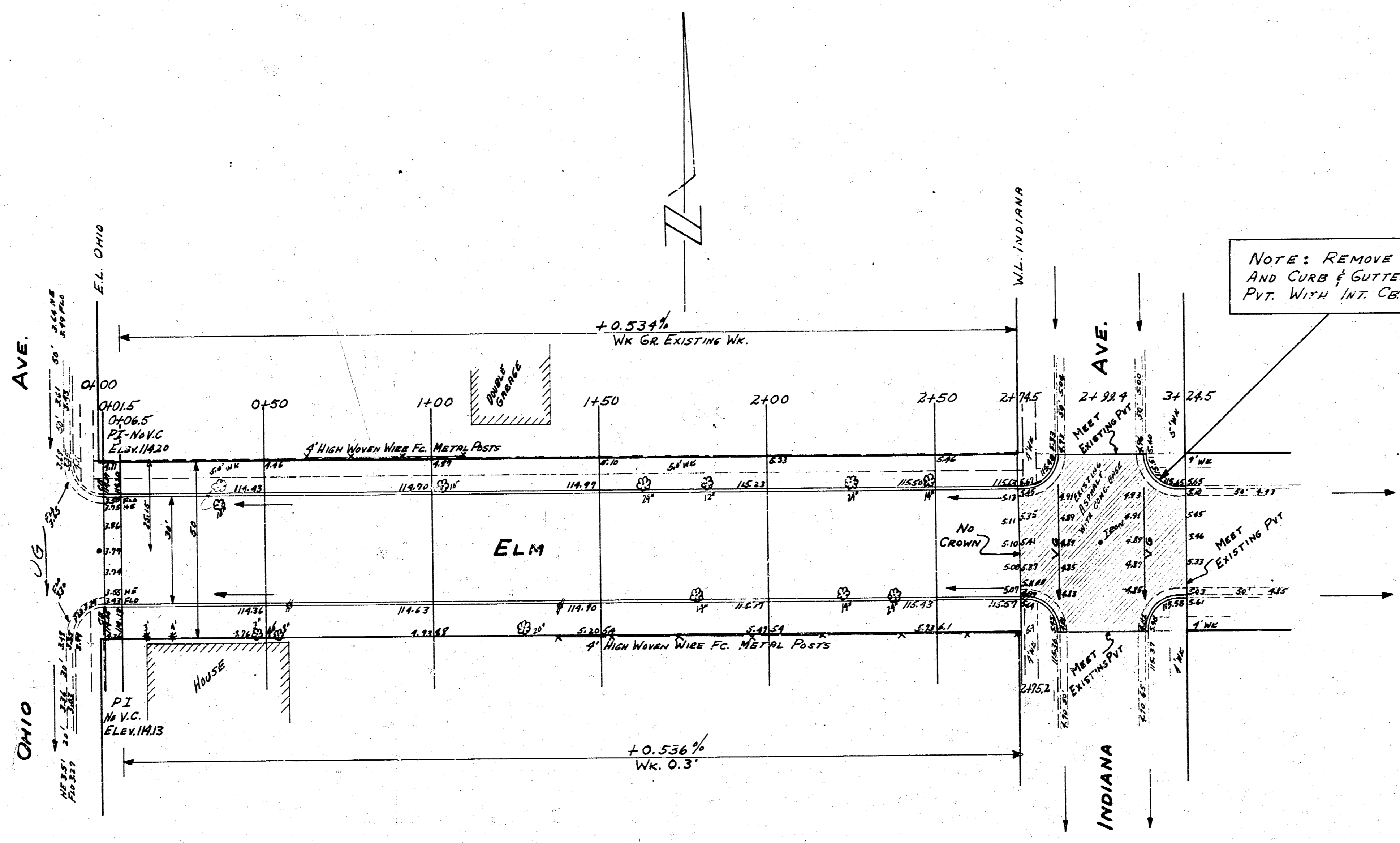


B.M. 114.74 S.E. COR. OF BOTTOM CONC. STEP HOUSE #591 N. OHIO
 B.M. 115.77 "K" IN KEELER SIDE WK S. AT N.E. COR. MURDACK & 10
 STATION & BASE LINE @ OF ELM.



Surveyed by B.E. Smith
 from 1879
 City Engineer
 City of Wichita, Kan.

PROPERTY		FILL	
CUT	111.30	FILL	27.4
11%	111	+11%	27.7
	122.9 CU. YDS CUT		30.1 CU. YDS FILL



ELM
 E.L. OHIO TO E.L. INDIANA
 30' CONC & CB.
 CITY OF WICHITA KAN.
 B.E. SMITH CITY ENGINEER
 AUG 1954 PROJ. NO C14-213

1/2