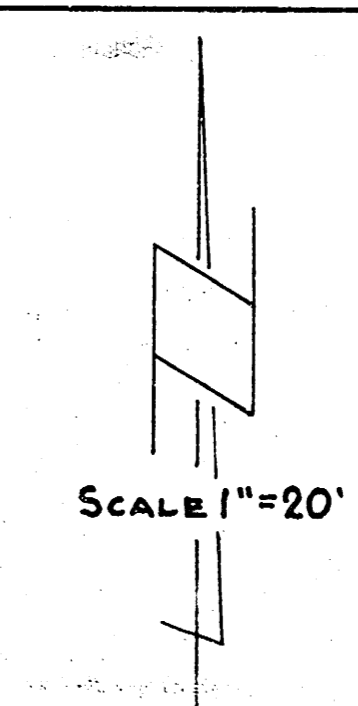


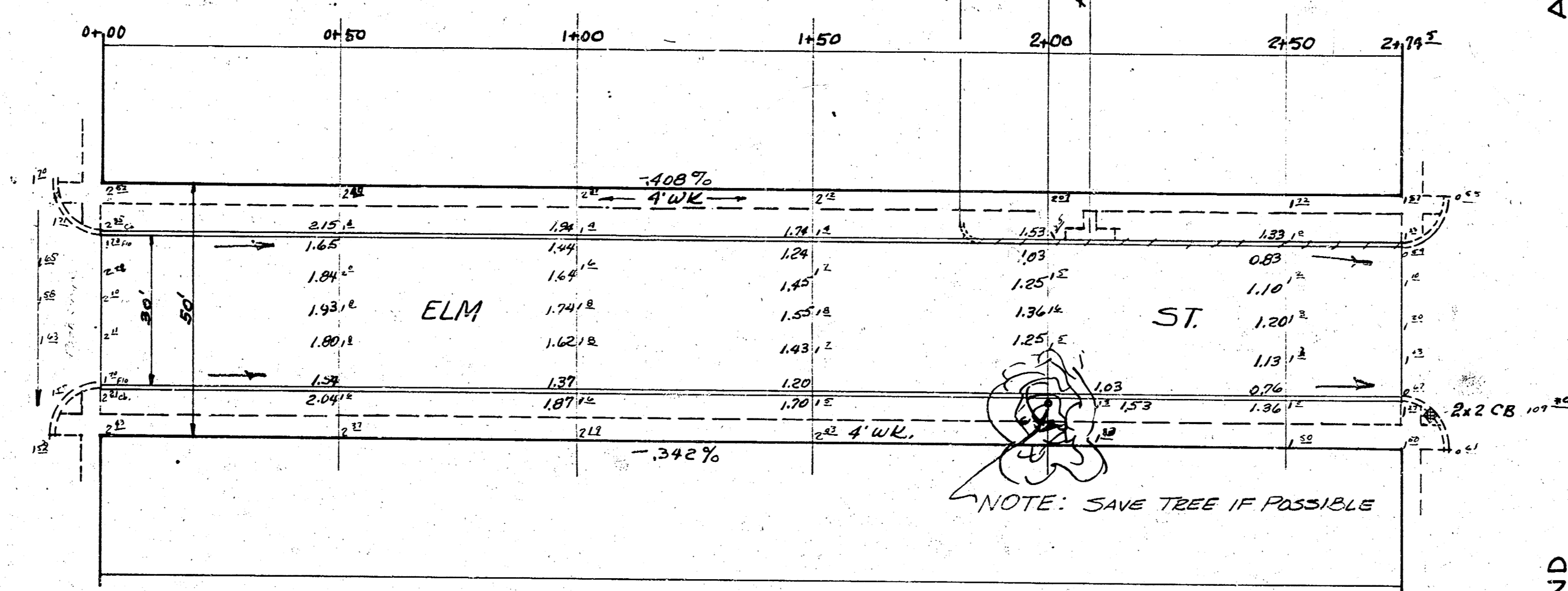
B.M. 112.39 M in Mixed Conc. W.W. S.W. or Mathewson & Central
 B.M. 113.95 Iron in thimble #ELM & WL CLEVELAND

Exc. Price
 30.0
 23.0
 27.5
 24.0
 21.0
 15.0



INDIANA AVE.

INDIANA AVE.



0.25' Thimble
 & ELM #1230818

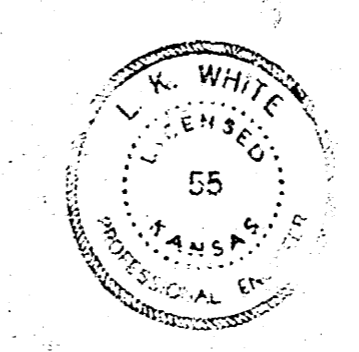
+81' Beg. 6" Cb on N side 15' W
 +100' 28" Tree 17' E
 +100' 8" Opp. Wk. 15' W

NOTE: SAVE TREE IF POSSIBLE

INDIANA

CLEVELAND

ELM ST.
 EL. INDIANA AVE. TO WL. CLEVELAND
 30' Conc. & Cb.
 CITY OF WICHITA, KANSAS
 L.K. WHITE
 CITY ENGINEER
 OCTOBER, 1951
 PROJ. NO. C. 11-163



1213