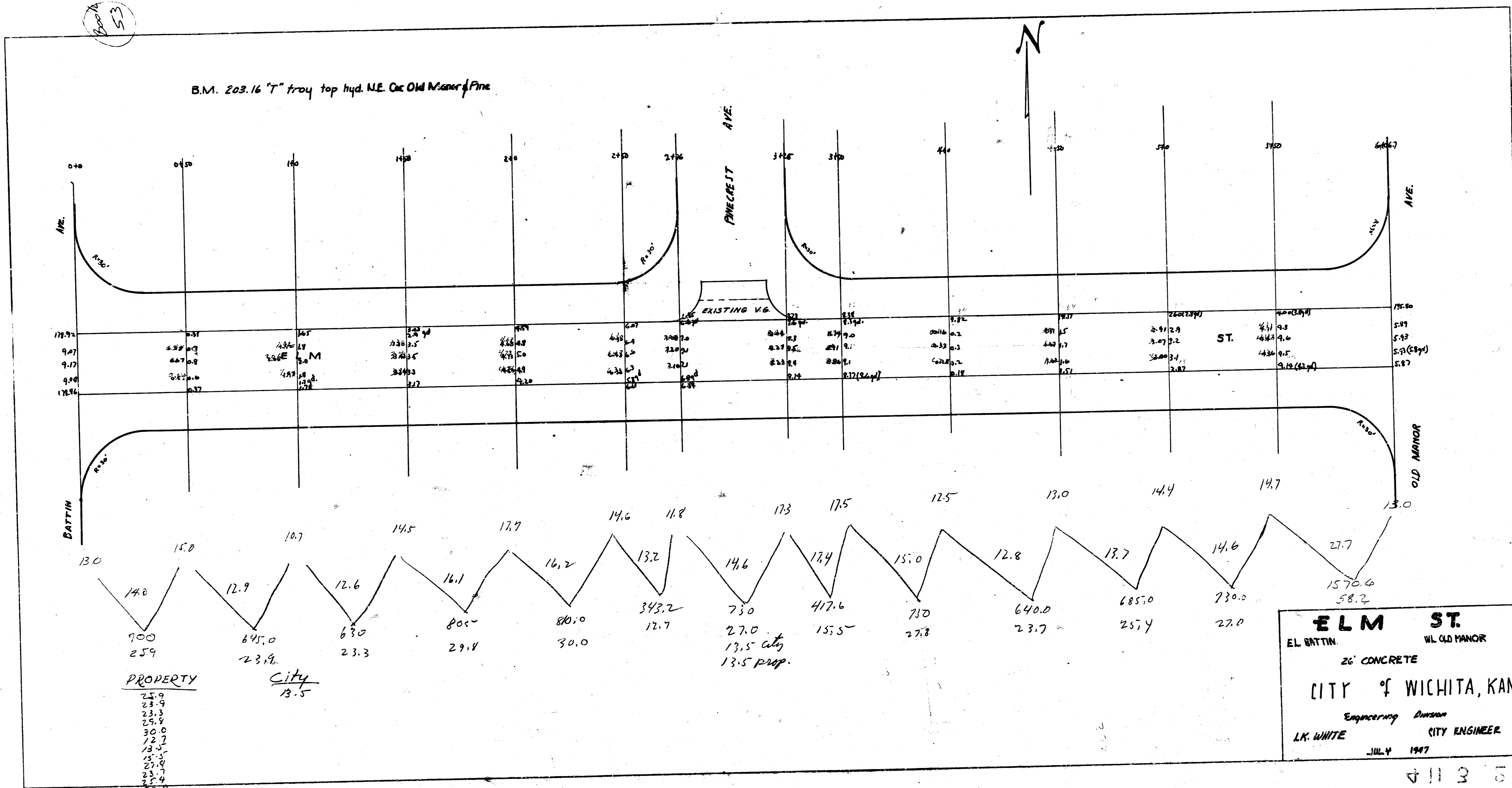


Book 53



| Station | 0+00 | 0+50 | 1+00 | 1+50 | 2+00 | 2+50 | 3+00 | 3+50 | 4+00 | 4+50 | 5+00 | 5+50 | 6+00 | 6+50 | 7+00 | 7+50 | 8+00 |
|-----------|--------|--------|--------|--------|--------|--------|-----------|--------|--------|--------|--------|--------|--------|--------|--------|--------|--------|
| Elevation | 178.74 | 178.74 | 178.74 | 178.74 | 178.74 | 178.74 | 178.74 | 178.74 | 178.74 | 178.74 | 178.74 | 178.74 | 178.74 | 178.74 | 178.74 | 178.74 | 178.74 |
| Property | 700 | 645.0 | 630 | 805 | 80.0 | 343.2 | 730 | 417.6 | 710 | 640.0 | 685.0 | 730.0 | 1570.0 | 58.2 | | | |
| City | 259 | 23.9 | 23.3 | 29.8 | 30.0 | 12.7 | 13.5 city | 155.5 | 27.8 | 23.7 | 25.4 | 27.0 | | | | | |
| City | | 13.5 | | | | | | | | | | | | | | | |

PROPERTY
25.9
23.3
23.3
25.8
30.0
12.7
13.5
15.5
21.8
23.7
23.4
23.0
38.7
33.7
+10% 370.3

ELM ST.
EL BATTIN WL OLD MANOR
26" CONCRETE
CITY OF WICHITA, KANSAS
Engineering Division
L.K. WHITE CITY ENGINEER
JULY 1947