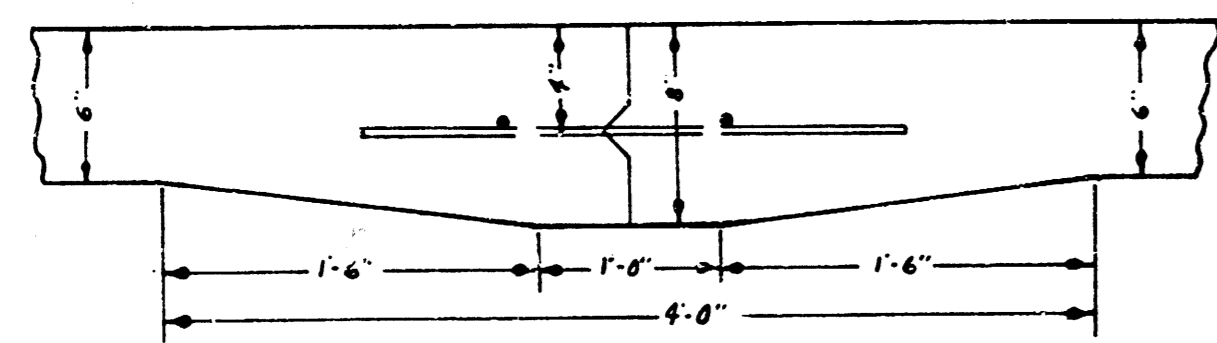
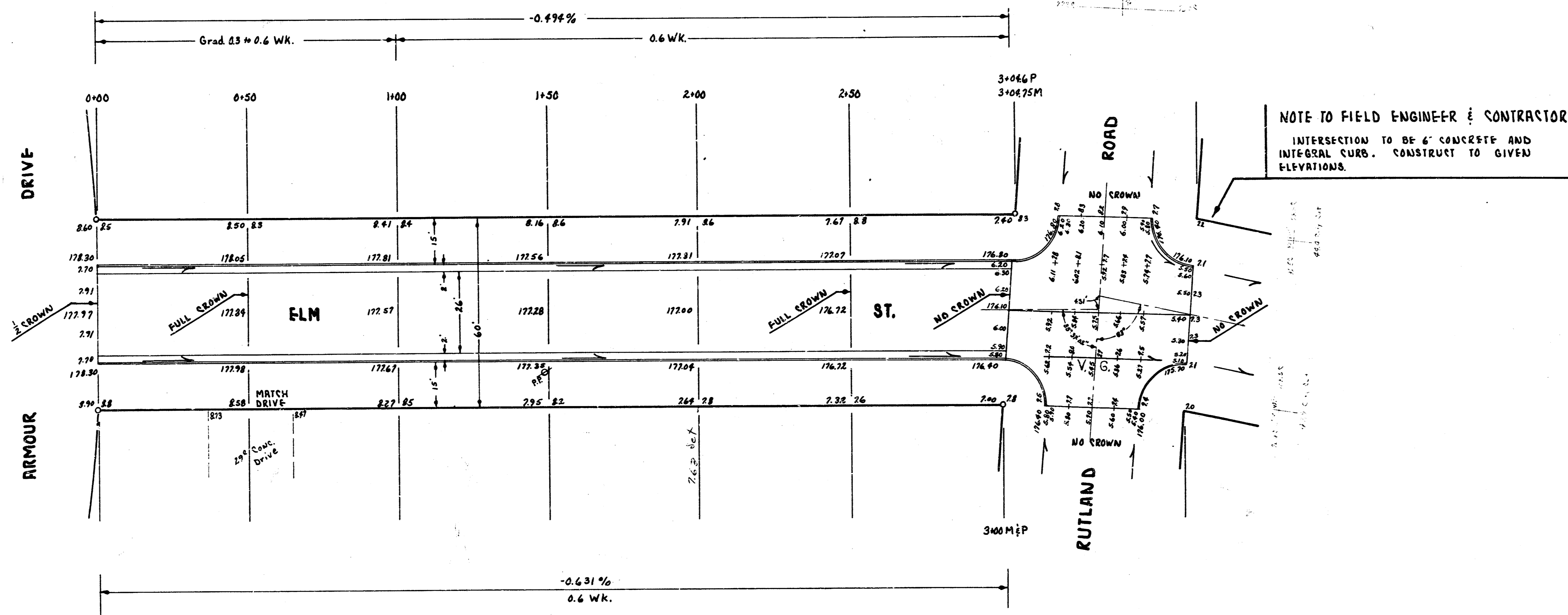
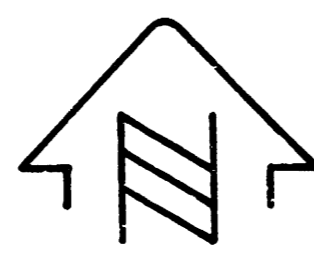


BM 152.19 S.E. COR. CONV. PRESH HO# 607 ARMOUR  
 BASE LINE & STATIONING ON NORTH PROPERTY LINE.



DETAIL OF MASTIC KEY JOINT  
 NO. SCALE  
 USE #4 BARS, 3' LONG, 2'-6" C-C.

~ EXCAVATION TOTALS ~

242.5 Cu Yds Prep Cut	713.4 Cu Yds Prep Cut
417.0 26.3	167.0 71.3
288.8 Cu Yds City Cut	287.7 Cu Yds Prep Cut



1/2

**ELM ST.**  
**W.L. ARMOUR to E.L. RUTLAND**  
**26-2-30 A.C.**  
**CITY OF WICHITA, KANSAS**  
 B.E. SMITH CITY ENGINEER  
 DATE: June 1909 PROJ. NO. C19-169

State of Kansas  
 Professional Engineer  
 License No. 436  
 B.E. Smith