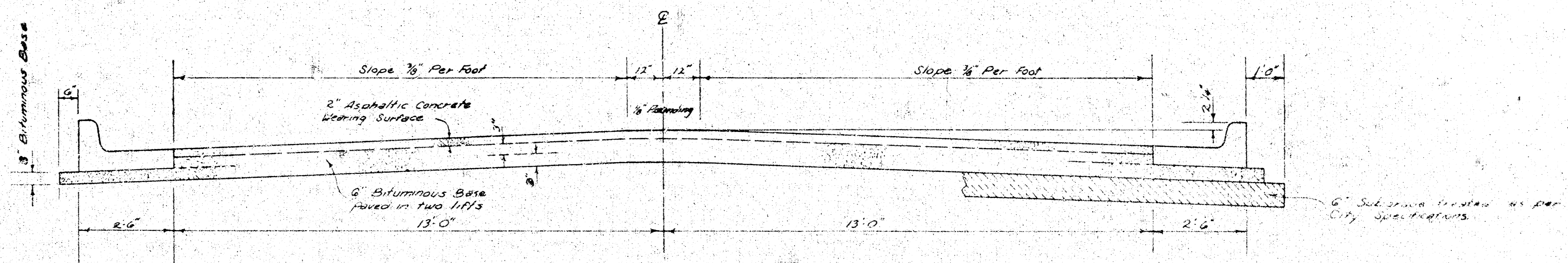


EL MONTE AVE

E-L VICTORIA AVE TO W-L HYDRAULIC AVE
 Proj NO: 472-76-245-80866-000-000-001

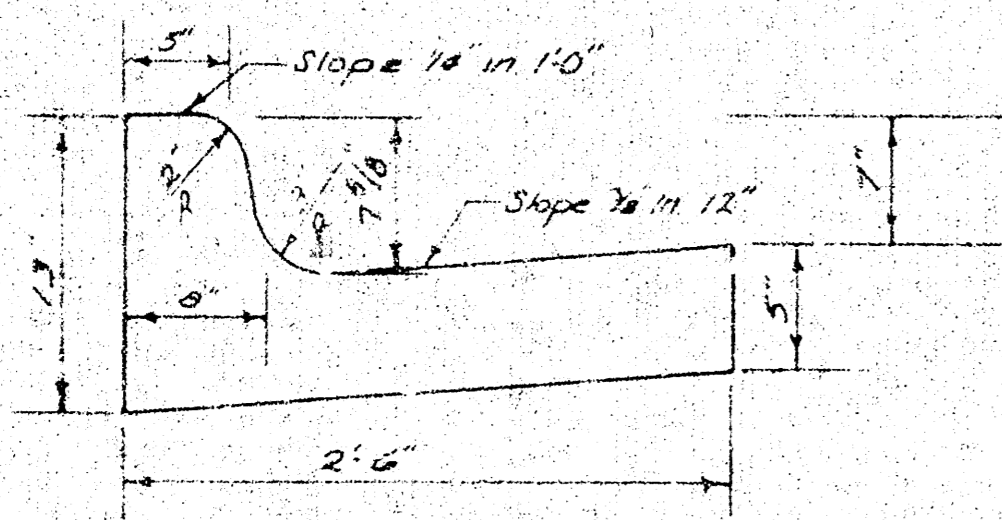


TYPICAL SECTION

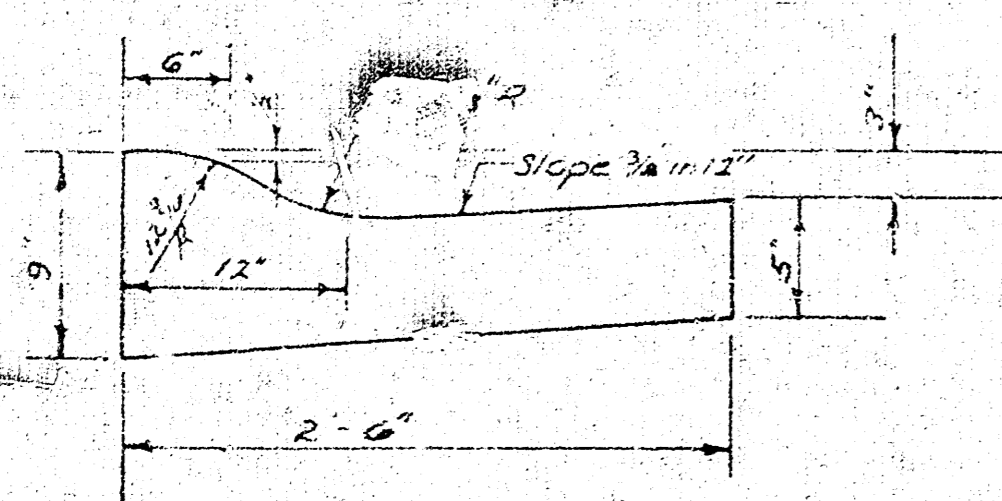
3" ASPHALTIC CONCRETE PAVEMENT WITH BITUMINOUS BASE

The AC pavement between the curb and gutter shall be paid as 3" x 8" AC pavement (w/ Bituminous Base). The Bituminous Base under the curb and gutter shall be paid as 3" x 3" Bituminous base.

COMBINED CURB & GUTTER

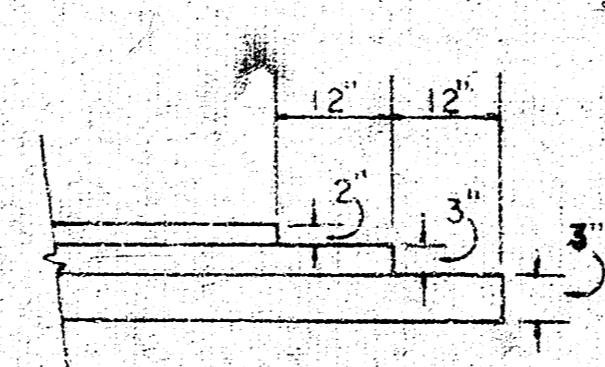


ROLL TYPE CURB & GUTTER



A TACK COAT OF EMULSIFIED ASPHALT (SS-1H) SHALL BE APPLIED AT AN APPROXIMATE RATE OF 0.05 GALLONS PER SQ. YD. BETWEEN LIFTS OF ASPHALTIC MATERIALS WHEN ORDERED BY THE ENGINEER. TACK COAT WILL NOT BE PAID FOR DIRECTLY AND SHALL BE CONSIDERED AS SUBSIDIARY TO PRICE BID FOR ASPHALTIC PAVEMENT. BITUMINOUS BASE AND ASPHALTIC CONCRETE WEARING SURFACE SHALL BE PLACED WITH A LAYDOWN MACHINE HAVING AUTOMATIC ELECTRONIC CONTROLS FOR CROWN AND GRADE. CONSTRUCTION JOINTS IN EACH LIFT SHALL BE STAGGERED A MINIMUM DISTANCE OF 1' WITH JOINTS IN PRECEDING LIFTS AND SUCH THAT A JOINT WILL BE CONSTRUCTED ON THE PAVEMENT CENTERLINE IN THE TOP LIFT.

DETAIL OF TRANSVERSE CONSTRUCTION JOINTS



TRANSVERSE CONSTRUCTION JOINTS SHALL BE CONSTRUCTED IN FLEXIBLE BASE PAVEMENTS AT LOCATIONS WHERE PAVEMENT TEMPORARILY ENDS TO FACILITATE FUTURE PAVEMENT CONSTRUCTION AS SHOWN BY DETAIL. THE COST OF CONSTRUCTING THE TRANSVERSE CONSTRUCTION JOINTS SHALL NOT BE MEASURED OR PAID FOR DIRECTLY BUT SHALL BE INCLUDED IN THE BID PRICE FOR SQUARE YARDS OF ASPHALTIC CONCRETE PAVEMENT.



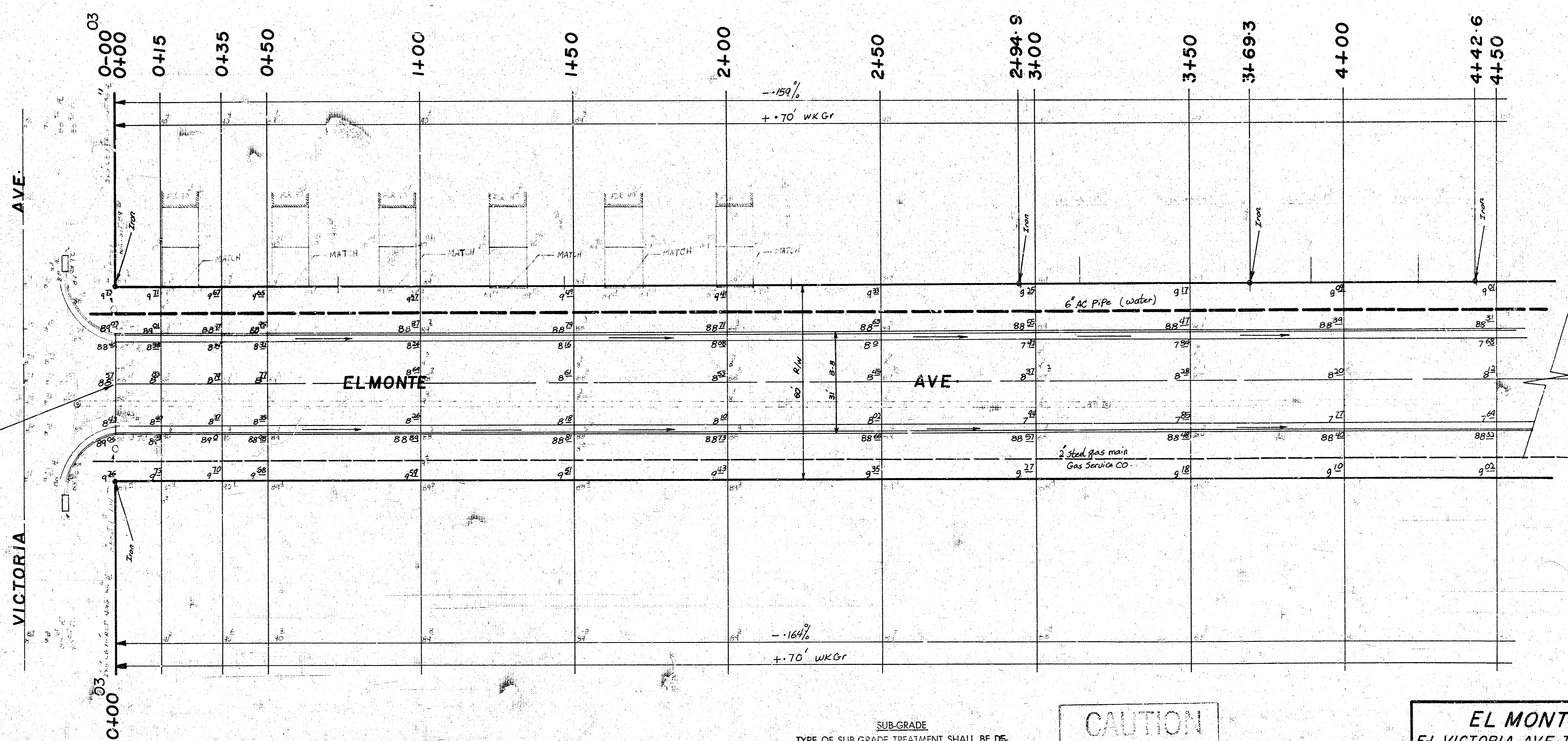
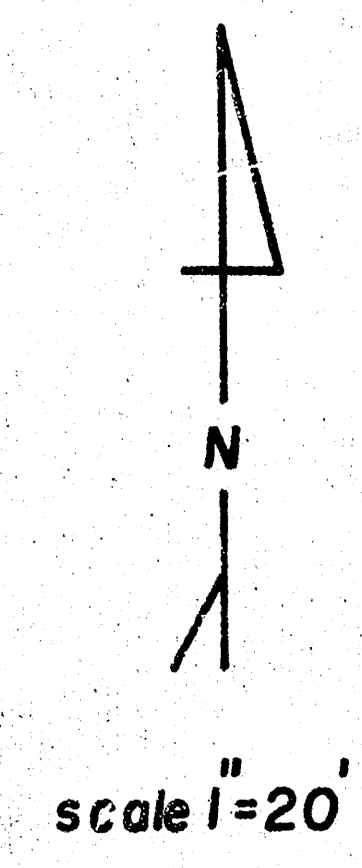
CITY OF WICHITA, KANSAS

DEPARTMENT OF PUBLIC WORKS — ENGINEERING

R. W. LINN CITY ENGINEER

DATE _____ PROJ. NO. 472-76-245-80866-000-000-001

BM = 92.81 SE COR CONC PORCH HOUSE #1420 EL MONTE
 base line ctr EIMonte



Survey King
 Plan AL
 Eri AL
 Checked SC

NOTE: Beginning Construction
 match existing pavement

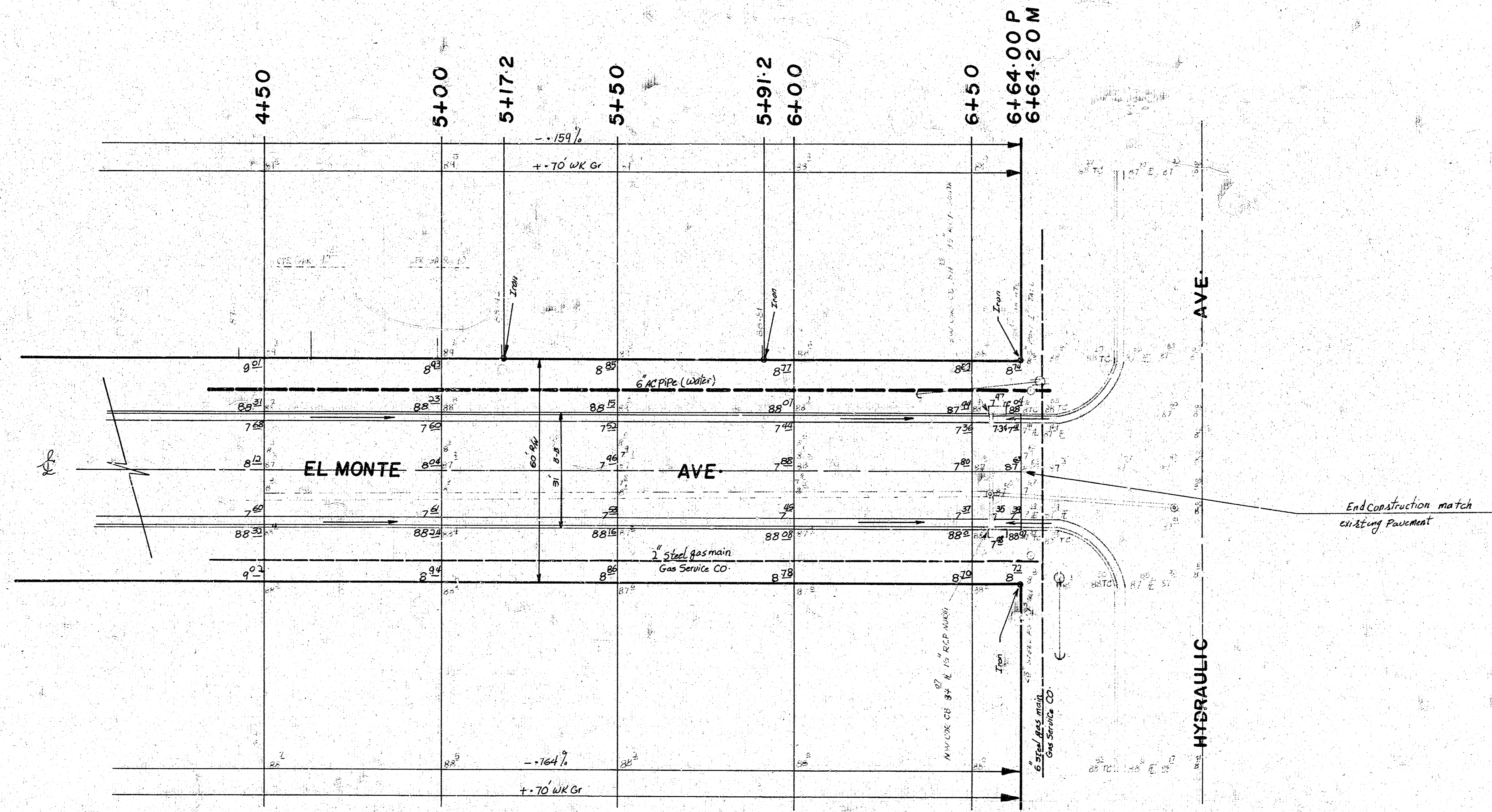
manipulation = 2434.6 s.y

EARTH WORK		
	property	city
Excavation	1019.5 c.y	0
+ 10%	101.9 c.y	
total	1121.4 c.y	

SUB-GRADE
 TYPE OF SUB-GRADE TREATMENT SHALL BE DETERMINED BY THE FIELD ENGINEER. SUB-GRADE TREATMENT MAY CONSIST OF LIME TREATMENT, CEMENT TREATMENT, SUB-GRADE MODIFICATION, OR ANY COMBINATION OF THESE.

CAUTION
 UNDERGROUND UTILITIES
 Please check for R.H.K. & Southwestern Bell Telephone Co. for location

EL MONTE AVE
 E/L VICTORIA AVE TO WL HYDRAULIC
 (3' B-B AC Pavt / Comb Cb & Gr.)
CITY OF WICHITA, KS
 DEAN SELLERS - CITY Engineer
 Proj NO-472-76-245-80866-000-000
 -001
 DATE



N
 scale 1"=20'