

PK # 3-3

B.M. 123.50 Std. N.W. cor. Pawnee & Oliver.

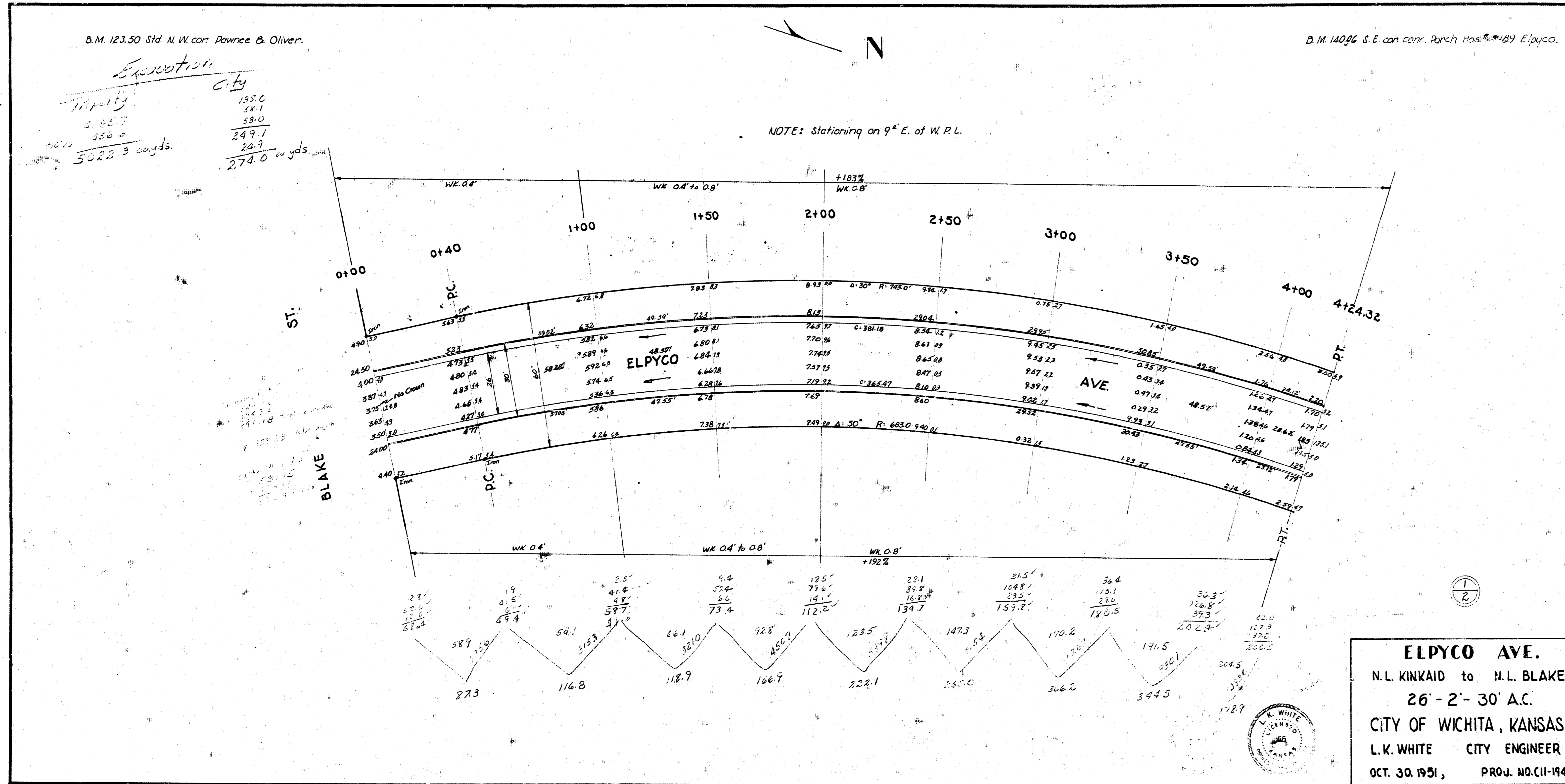
B.M. 140.94 S.E. cor. Parich Hous. #189 Elpyco.

Excavation

138.0
58.1
59.0
249.7
24.9
274.0

3022.3 cu yds.

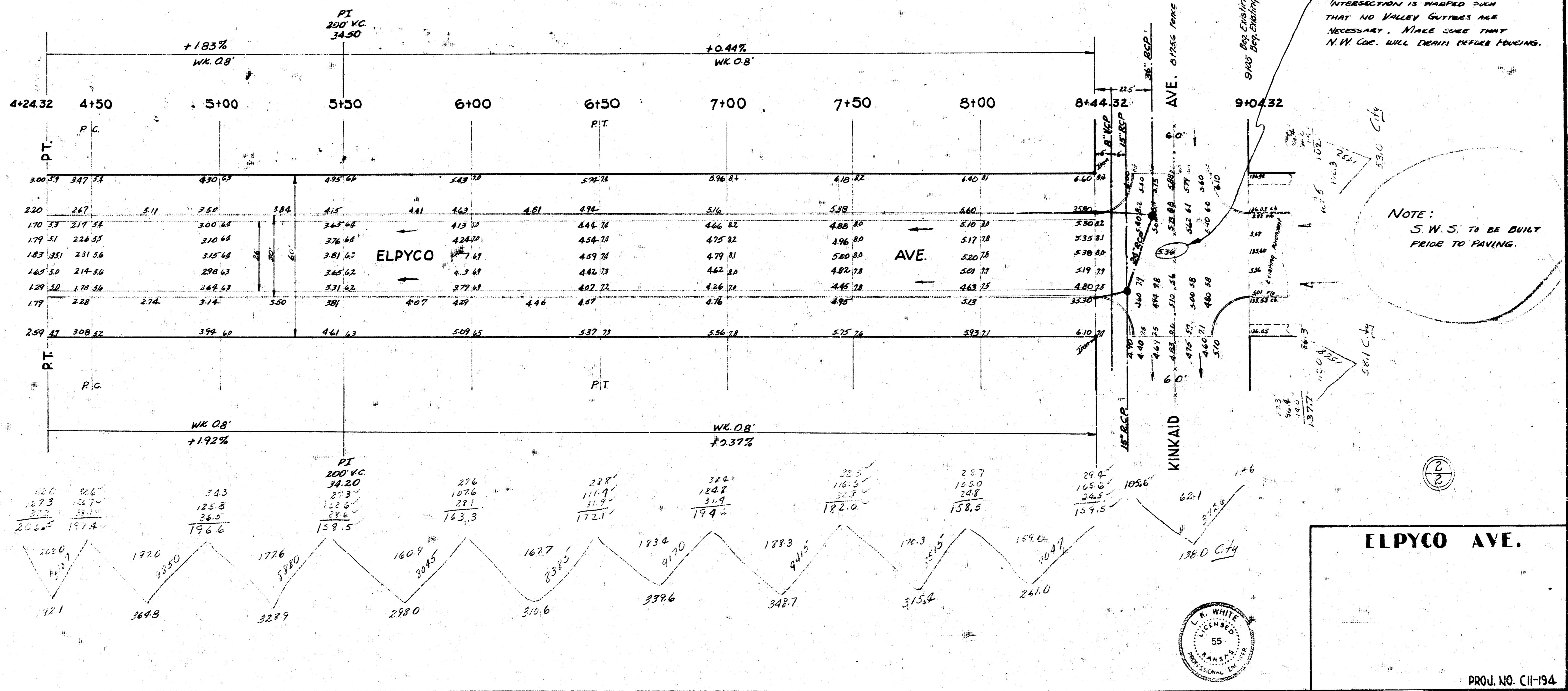
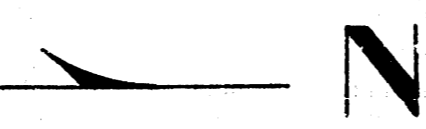
NOTE: Stationing on 9° E. of W. R.L.



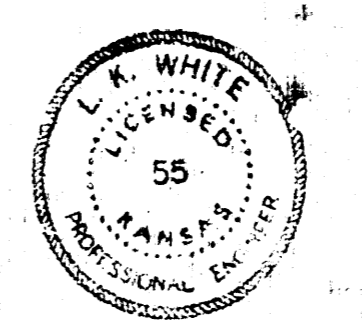
2 = 5-3

B.M. 123.50 Std. N.W. cor. Pawnee & Oliver.

B.M. 140.96 S.E. cor. cor. Patch Hds. #2189 Elpyco.



ELPYCO AVE.



PROJ. NO. CI-194