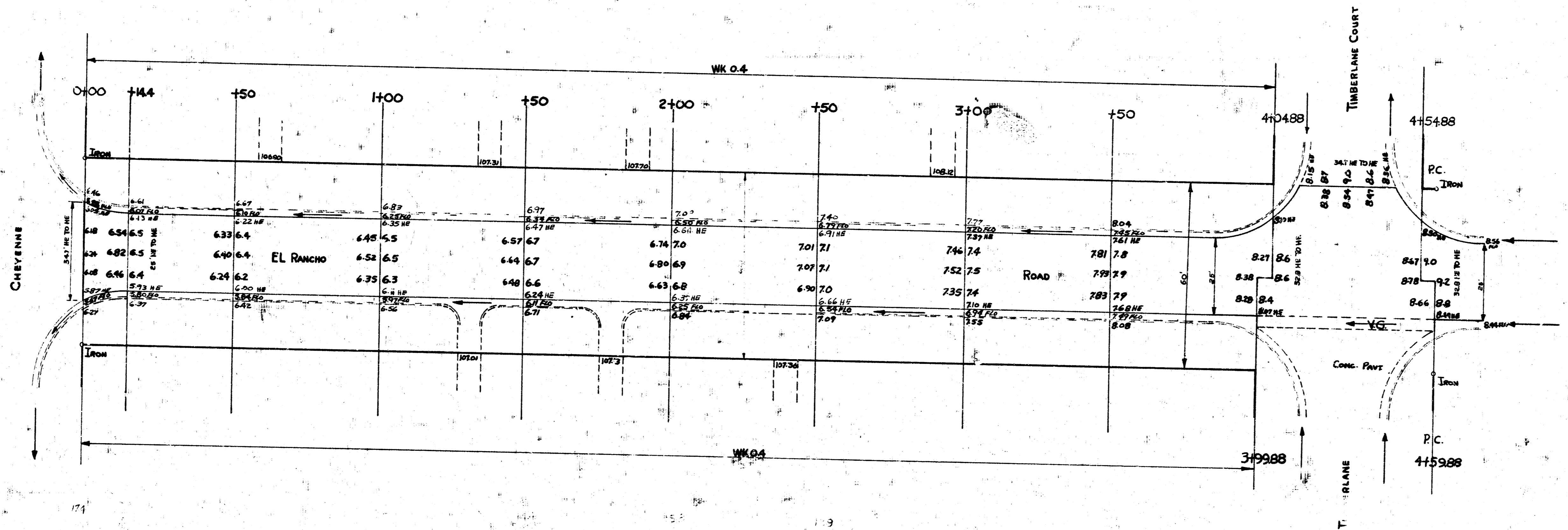
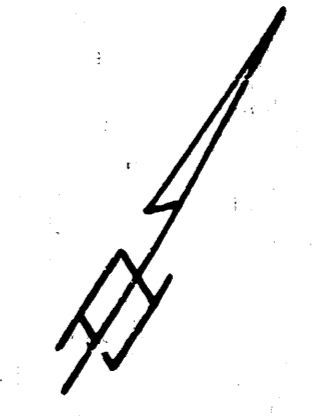


CHAIN N ON NE
 B.M. 104.77 S.W. COR. CONC. SLAB FOR DRIVEWAY No. # 3/54 GLEN OAKS Dr.
 B.M. 108.91 "X" ON S. E. EL RANCHO AT N 80° 00' E 15' W OF W.L. GLEN OAKS Dr.
 B.M. 109.05 "X" ON S. E. EL RANCHO 15' E OF E.L. TIMBERLINE



CHAIN N ON NE
 B.M. 104.77 S.W. COR. CONC. SLAB FOR DRIVEWAY No. # 3/54 GLEN OAKS Dr.
 B.M. 108.91 "X" ON S. E. EL RANCHO AT N 80° 00' E 15' W OF W.L. GLEN OAKS Dr.
 B.M. 109.05 "X" ON S. E. EL RANCHO 15' E OF E.L. TIMBERLINE

1/2



EL RANCHO
 EL CHEYENNE TO S.L. GLEN OAKS
 26' CONC.
 CITY OF WICHITA, KANSAS
 B.E. SMITH CITY ENGINEER
 SEPT. 1954 Proj. No. C 14-214

