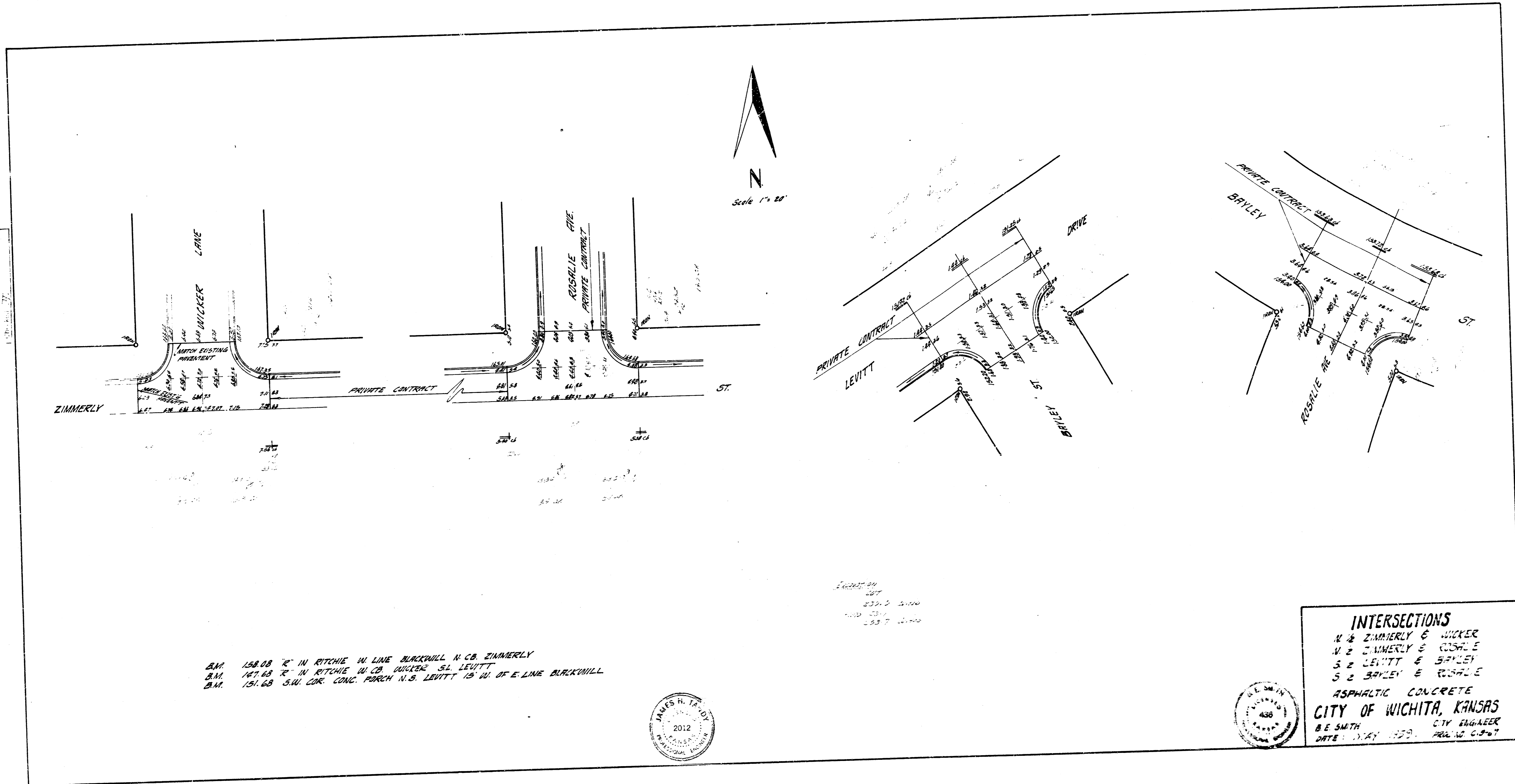
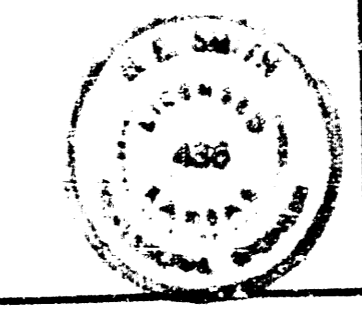


PLAN
 1/2" = 10'
 1/4" = 5'



B.M. 158.08 "R" IN RITCHIE W. LINE BLACKHILL N. CO. ZIMMERLY
 B.M. 147.68 "R" IN RITCHIE W. CO. DUNKER S.E. LEVITT
 B.M. 151.68 S.W. COR. CONC. PARCH. N.S. LEVITT 15' W. OF E. LINE BLACKHILL

158.08
 147.68
 151.68



INTERSECTIONS
 N 2 ZIMMERLY & WICKER
 N 2 ZIMMERLY & ROSALIE
 S 2 LEVITT & SPALEY
 S 2 SPALEY & ROSALIE
 ASPHALTIC CONCRETE
CITY OF WICHITA, KANSAS
 B.E. SMITH CITY ENGINEER
 DATE: 1.24.1930. PROJ. NO. 1007