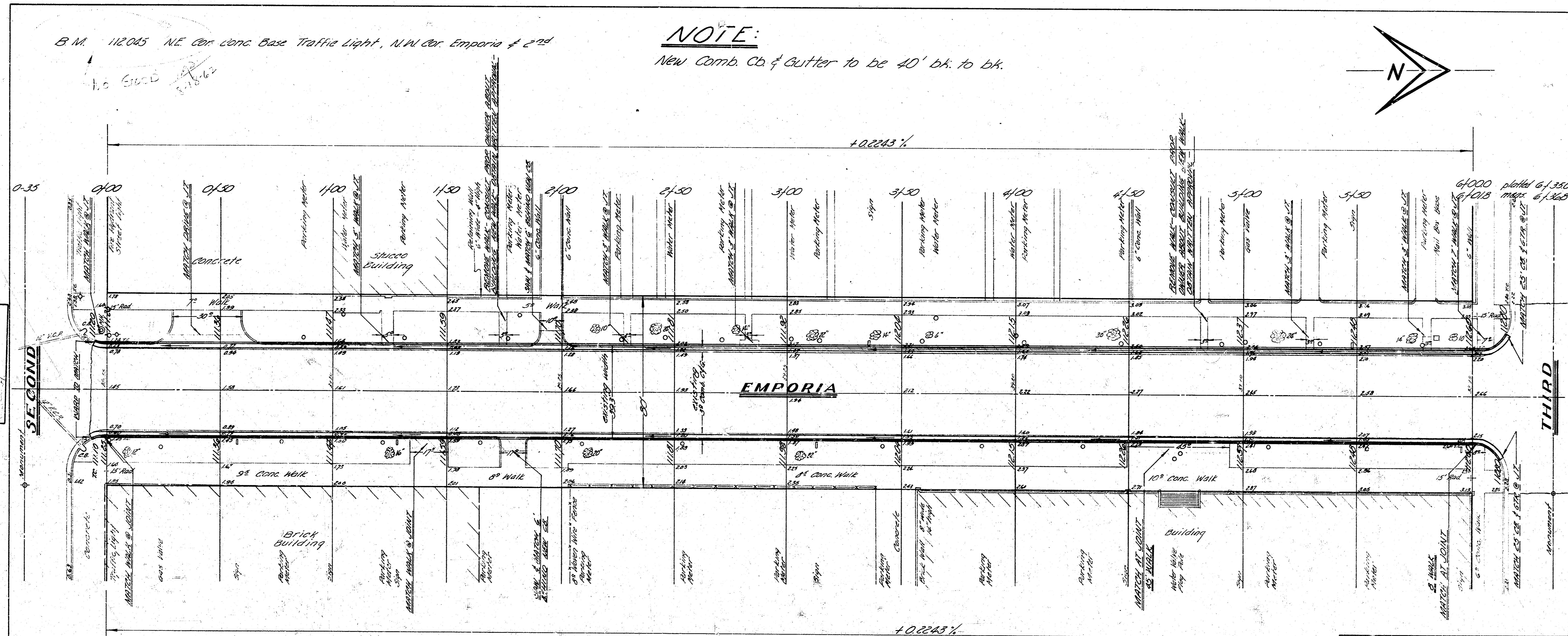
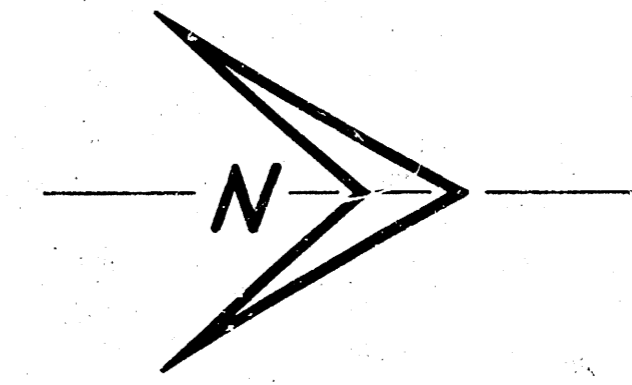


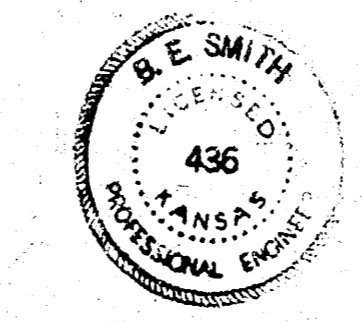
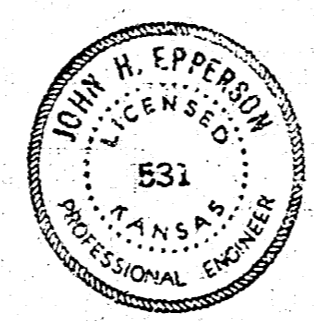
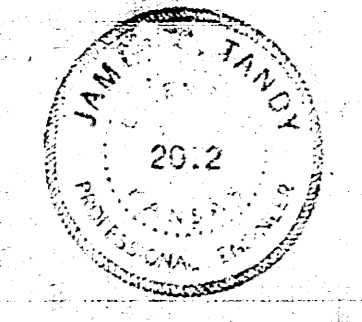
B.M. 112045 NE Cor. Conc. Base Traffic Light, N.W. Cor. Emporia & 2nd

NOTE:
New Comb. Cb & Gutter to be 40' bk. to bk.



NOTE:
Remove existing surface, repair base with 7" concrete as necessary, level up with asphaltic concrete, & resurface with 2" asphaltic concrete.

NOTE:
Remove comb. cb & gutter, driveways and sidewalks as shown on plan. Replace with standard 25 comb. curb and gutter. Field engineer shall match existing drives & walks where and possible. Additional driveway & sidewalk work (other than shown on plan) may be completed only after approval from the property owner so that charges may be assessed directly to that lot.

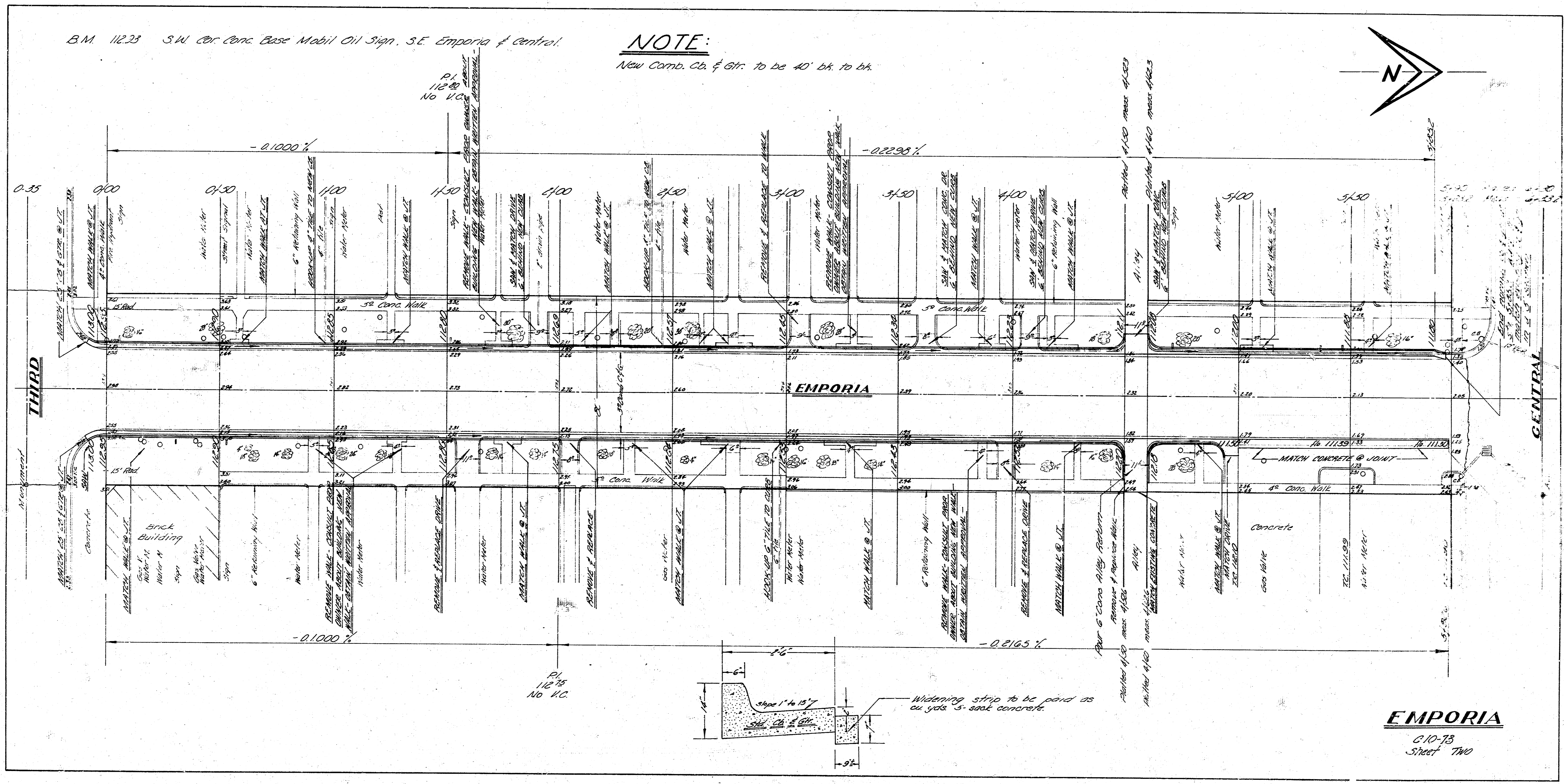


EMPORIA
N.W. Second to S.W. Central
CURB & GTR.
Improve & Reimprove
B.E. Smith City Engineer
Date July 1961 Proj. No. 00-73

Sheet 026

B.M. 11225 S.W. Cor. Conc. Base Mobil Oil Sign, S.E. Emporia & Central.

NOTE:
New Comb. Ch. & Gr. to be 40' bh. to bh.



EMPORIA
6-10-73
Sheet TWO