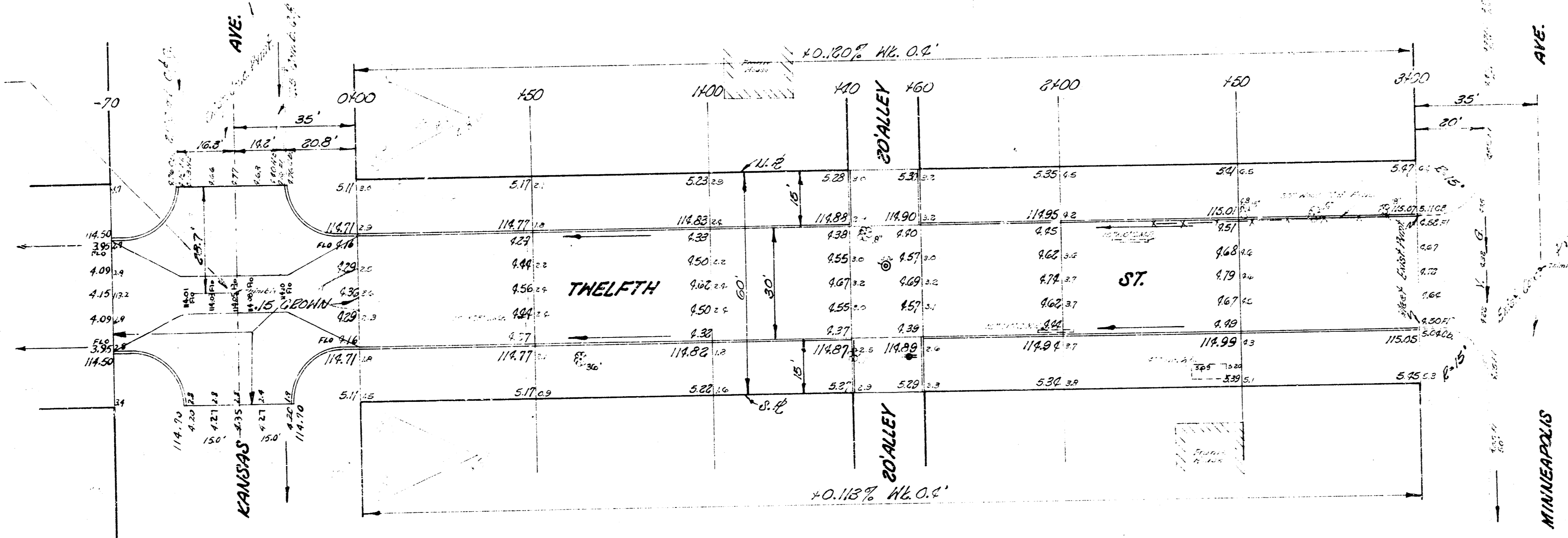


S.N. 114.71 8" in GLOBE, bc of H.L. M. M.M. cor. Kansas & 12TH
 S.N. 115.10 8" in GLOBE, N. of 12TH, H.L. Minneapolis.
 NOTE TO FIELD ENGINEER:
 All entrance pipes are to be disposed as
 per directions of the City Dir. & Checker.

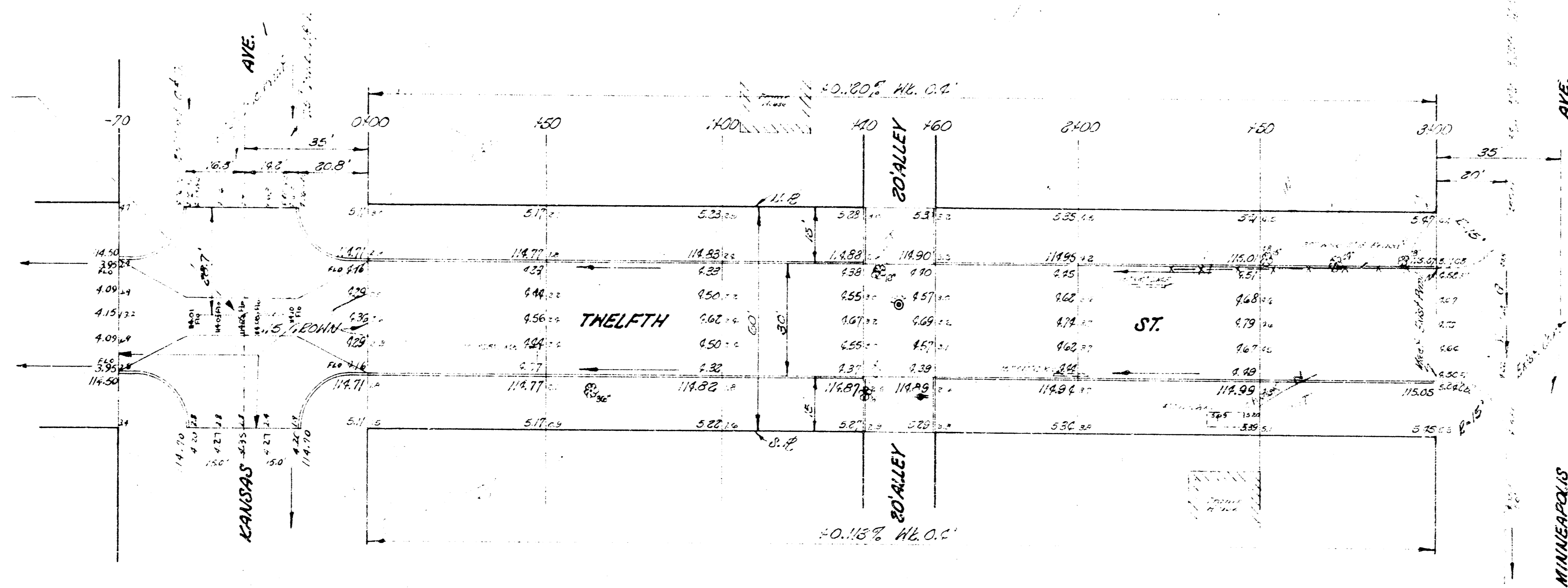
NOTE:
 V.G. TO BE 10' WIDE & BUILT
 FLAT THROUGH THIS WIDTH.



INTERSECTION OF 12TH & KANSAS
 PART NO. C14-252
 TWELFTH STREET
 S.E. KANSAS AVE. TO N.L. MINNEAPOLIS AVE.
 30' WIDE & C.S.
 CITY OF WICHITA, KANSAS
 S.E. SMITH
 AUG. 1954
 CITY ENGINEER
 FROM NO. 24-26

3/4" = 10' in GLOBE, pt. of N.E. 1/4, 14th cor. Kansas & 12th.
 2 1/4" = 10' in GLOBE, N. 1/2, 12th, N.E. 1/4, Minneapolis.
NOTE TO FIELD ENGINEERS:
 All entrance signs are to be disposed as
 per directions of the City Dir. Checker.

NOTE:
 V.S. TO BE 10' WIDE & BUILT
 FLAT THROUGH THIS WIDTH.



INTERSECTION OF 12TH & KANSAS
 Proj. No. - 4-25-2
TNELETH STREET
 S.W. Kansas Ave. cor. N.E. Minneapolis, 1/4 Sec.
 30' Town S.C.E.
 CITY OF WICHITA, KANSAS
 J.E. Smith City Engineer
 Nov. 1924