

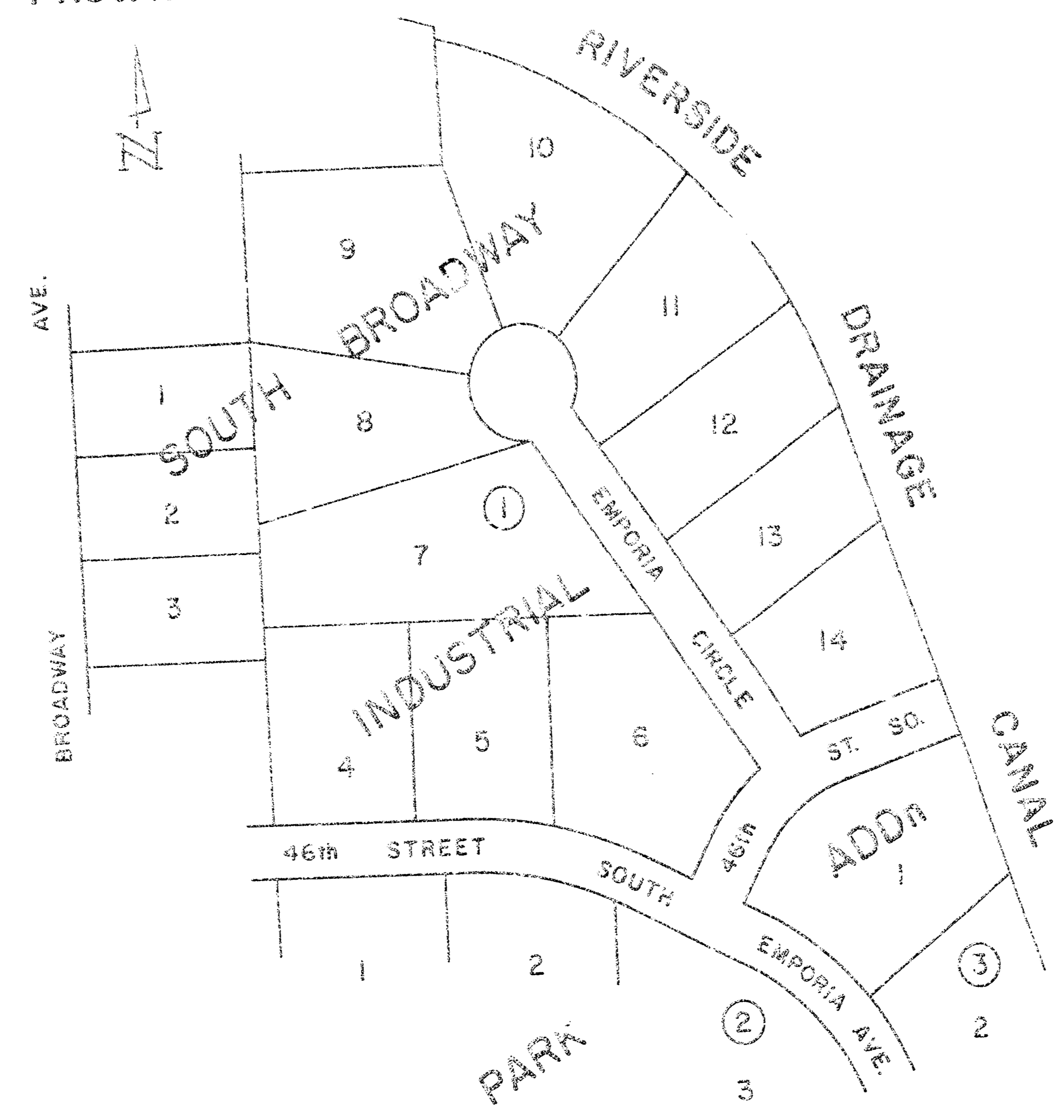
SOUTH BROADWAY INDUSTRIAL PARK ADDn  
EMPORIA CIRCLE  
N.L. 46th ST. SOUTH TO & INCLUDING CUL-DE-SAC

CITY OF WICHITA, KANSAS

R.W. BRUGSEMAN DIRECTOR OF ENGINEERING / CITY ENGINEER

DATE:

PROJ. NO. 472 76 245 60759 000 000 001

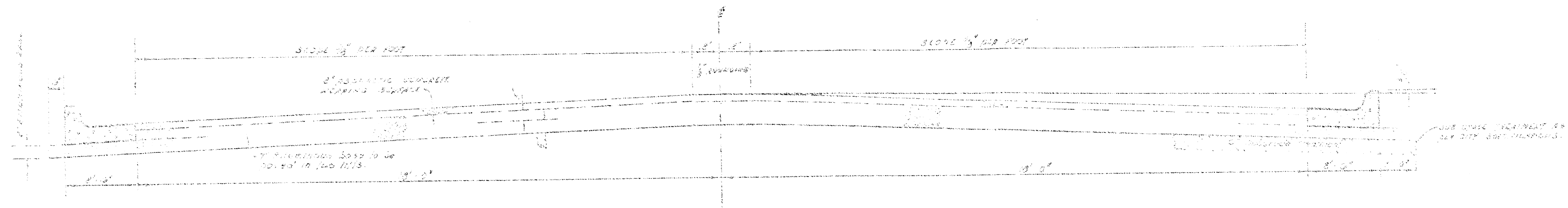


LOCATION MAP  
SCALE: 1"=150'

1/6

1/6

SOUTH BROADWAY INDUSTRIAL PARK ADDN  
EMPORIA CIRCLE  
N. L. 45th ST. SOUTH TO & INCLUDING CUL-DE-SAC

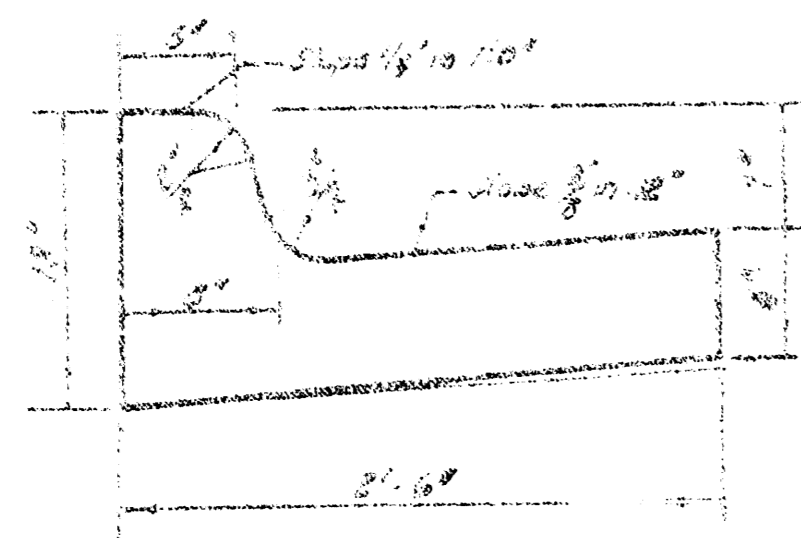


TYPICAL SECTION

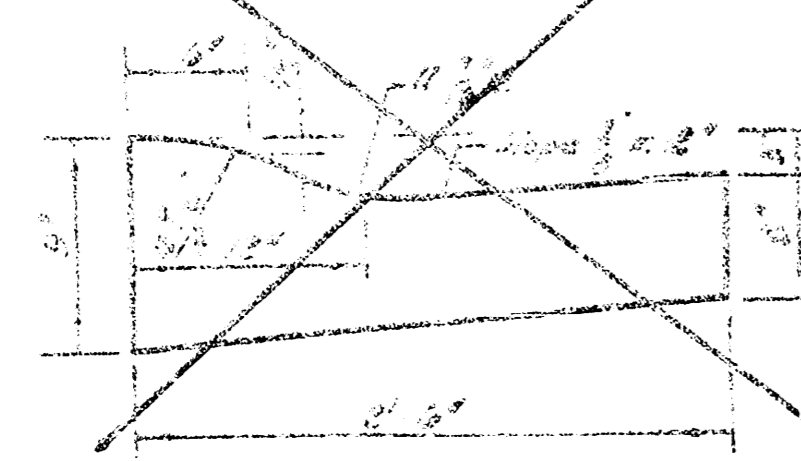
4' ASPHALTIC CONCRETE PAVEMENT WITH BITUMINOUS BASE

A TACK COAT OF EMULSIFIED ASPHALT (SS-1H) SHALL BE APPLIED AT AN APPROXIMATE RATE 0.05 GALLONS PER SQ YD BETWEEN LIFTS OF ASPHALTIC MATERIALS WHEN ORDERED BY THE ENGINEER. TACK COAT WILL NOT BE PAID FOR DIRECTLY AND SHALL BE CONSIDERED AS SUBSIDIARY TO PRICE BID FOR ASPHALTIC PAVEMENT. BITUMINOUS BASE AND ASPHALTIC CONCRETE WEARING SURFACE SHALL BE PLACED WITH A LAYDOWN MACHINE HAVING AUTOMATIC CONTROLS FOR CROWN AND GRADE. CONSTRUCTION JOINTS IN EACH LIFT SHALL BE STAGGERED A MINIMUM DISTANCE OF 1' WITH JOINTS IN PRECEDING LIFTS AND SUCH THAT A JOINT WILL BE CONSTRUCTED ON THE PAVEMENT CENTERLINE IN THE TOP LIFT.

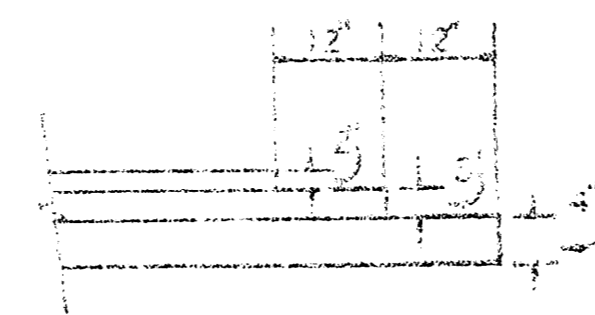
COMBINED CURB & GUTTER



STANDARD CURB & GUTTER



DETAIL OF TRANSVERSE CONSTRUCTION JOINTS



TRANSVERSE CONSTRUCTION JOINTS SHALL BE CONSTRUCTED IN FLEXIBLE BASE PAVEMENTS AT LOCATIONS WHERE PAVEMENT TEMPORARILY ENDS TO FACILITATE FUTURE PAVEMENT CONSTRUCTION AS SHOWN BY DETAIL. THE COST OF CONSTRUCTING THE TRANSVERSE CONSTRUCTION JOINTS SHALL NOT BE MEASURED OR PAID FOR DIRECTLY BUT SHALL BE INCLUDED IN THE BID PRICE FOR SQUARE YARDS OF ASPHALTIC CONCRETE PAVEMENT.

CITY OF WICHITA, KANSAS

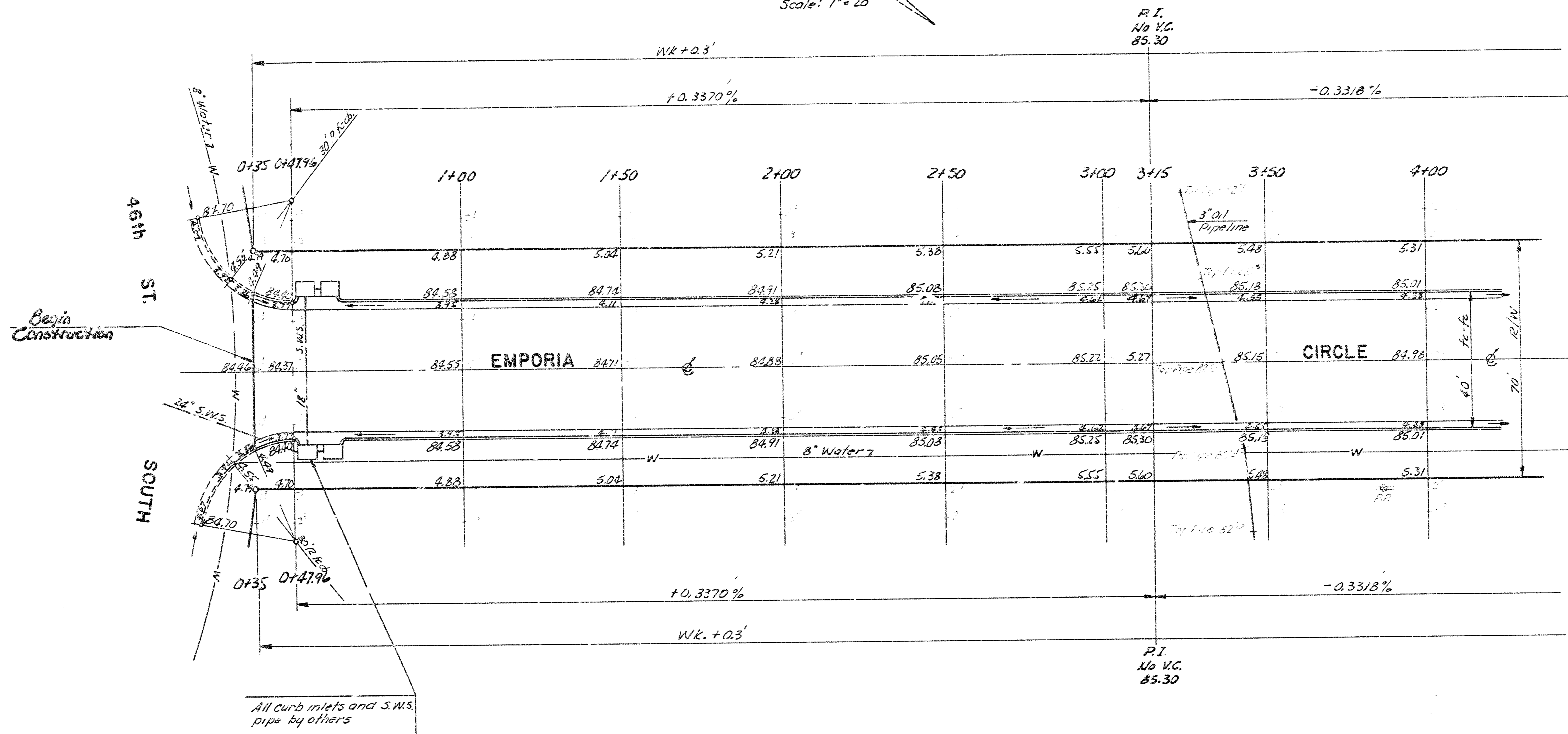
DEPARTMENT OF PUBLIC WORKS - ENGINEERING DIVISION

DATE \_\_\_\_\_

PROJ. NO. 472 78 243 80758 000 000 001

B.M. 82.84 Broadway & 47<sup>th</sup> St. So., City Std., 28'E. & 28.3' N of Section Cor.  
 B.M. 83.27 R.R. Spk on E. Face P.I. on E. Side Santa Fe Ave. by wire fence & near S.L. 46<sup>th</sup> St. So.  
 B.M. 83.21 "I" on top of gas meter in front of house @ 4635 So. Broadway

Scale: 1" = 20'



Survey  
 Plan  
 Exc  
 Check

Begin Construction

NOTE: S.W.S. shown on this plan has been constructed.

**SUBGRADE**  
 TYPE OF SUBGRADE TREATMENT SHALL BE DETERMINED BY THE FIELD ENGINEER. SUBGRADE TREATMENT MAY CONSIST OF LIME TREATMENT, CEMENT TREATMENT, SUBGRADE MODIFICATION, OR ANY COMBINATION OF THESE.

**EARTHWORK**  
 Compacted Fill  
 Prod. 991.2 C.Y.  
 +10% 99.1  
 1090.3 C.Y.  
 Borrow  
 Prod. 4720.0 C.Y.

THE CONTRACTOR SHALL BE RESPONSIBLE FOR PRESERVING PROPERTY IRONS. THE CONTRACTOR SHALL BE REQUIRED TO RE-ESTABLISH ANY PROPERTY IRONS WHICH ARE DAMAGED OR DESTROYED BY HIS CONSTRUCTION OPERATIONS. SUCH IRONS SHALL BE RE-ESTABLISHED BY A LICENSED LAND SURVEYOR OR A LICENSED PROFESSIONAL ENGINEER IN ACCORDANCE WITH STATE LAWS.

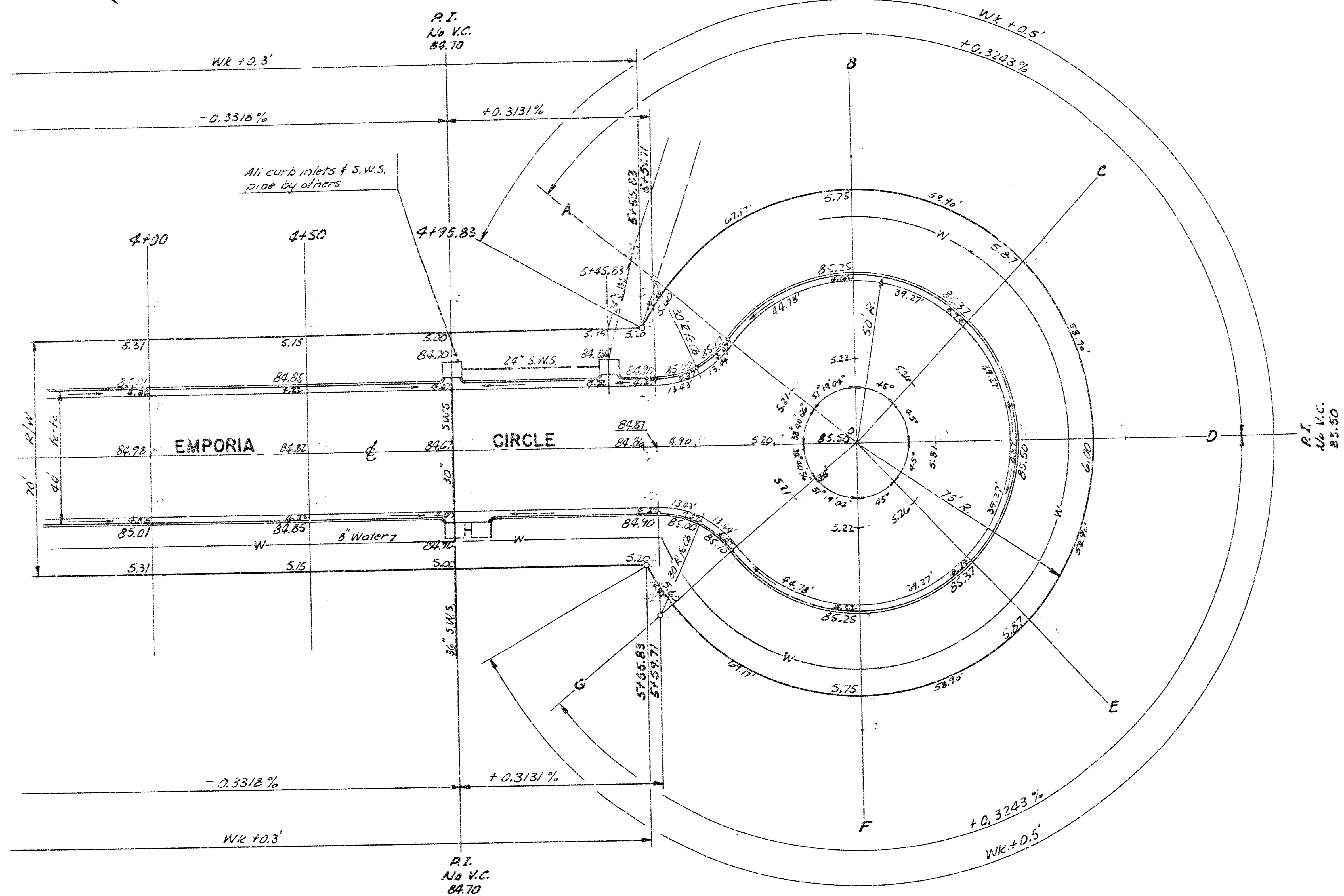
Total Manipulation = 3498 54.

EMPORIA CIRCLE  
 N.L. 46th ST. SOUTH TO  
 AND INCLUDING CUL-DE-SAC

PROJ. NO. 47276 245 80753 000 000 001

3/6

Scale: 1" = 20'



EMPORIA CIRCLE  
 N.L. 46th ST. SOUTH TO  
 AND INCLUDING CUL-DE-SAC

PROJ. NO. 47276 24580759 000 000 001

3/6



