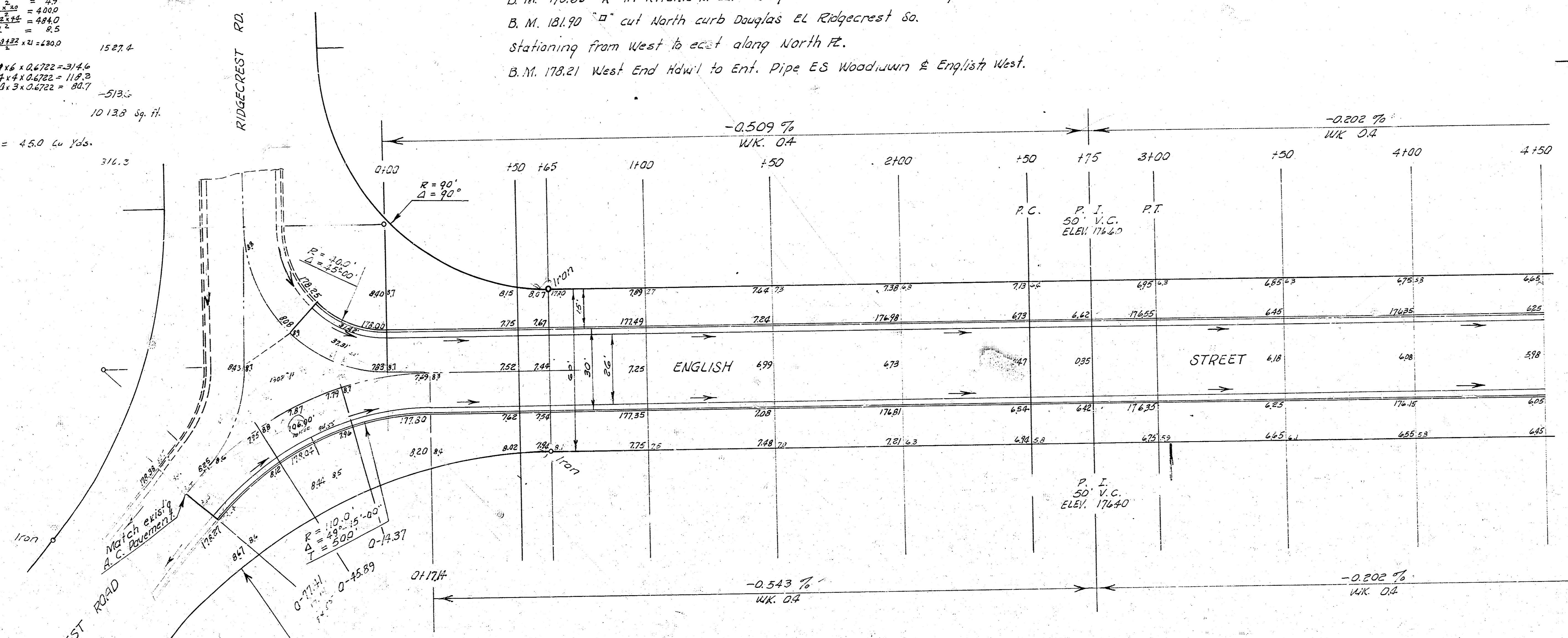
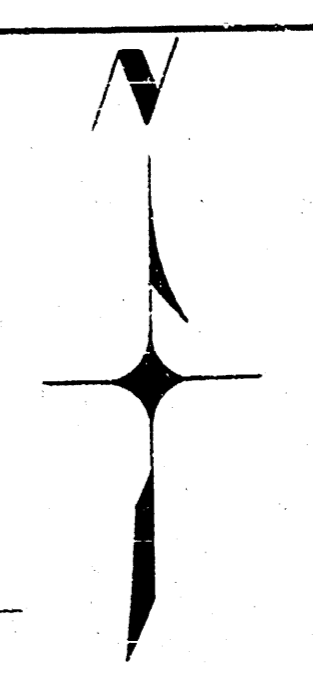


AREA $D = \frac{13 \times 92.5}{2} = 600.625$
 $A = \frac{42 \times 30}{2} = 630$
 $B = \frac{55 \times 15}{2} = 412.5$
 $C = \frac{40 \times 12}{2} = 240$
 TRAPEZOID = $600.625 + 630 + 412.5 + 240 = 1903.125$
 1527.4
 AREA SEG A = $78 \times 6 \times 0.6722 = 314.6$
 $D = 44 \times 4 \times 0.6722 = 119.2$
 $C = 40 \times 3 \times 0.6722 = 80.7$
 -513.5
 1013.8 sq. ft.

$\frac{12 \times 1013.8}{27} = 45.0$ Cu Yds.
 316.3

B. M. 178.85 "R" in Ritchie N. curb Ridgcrest 260' E of EL Lynwood.
 B. M. 181.90 "D" cut North curb Douglas EL Ridgcrest So.
 Stationing from West to east along North P.C.
 B. M. 178.21 West End Hdwl to Ent. Pipe ES Woodlawn & English West.



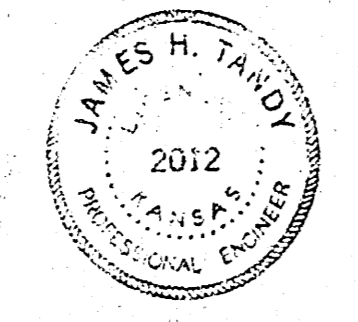
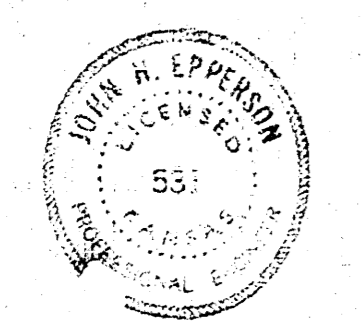
CURVE DATA STA. 0+71.41 TO STA. 0+17.14
STATIONING ON FACE SO. CURB 24'-37'-30"

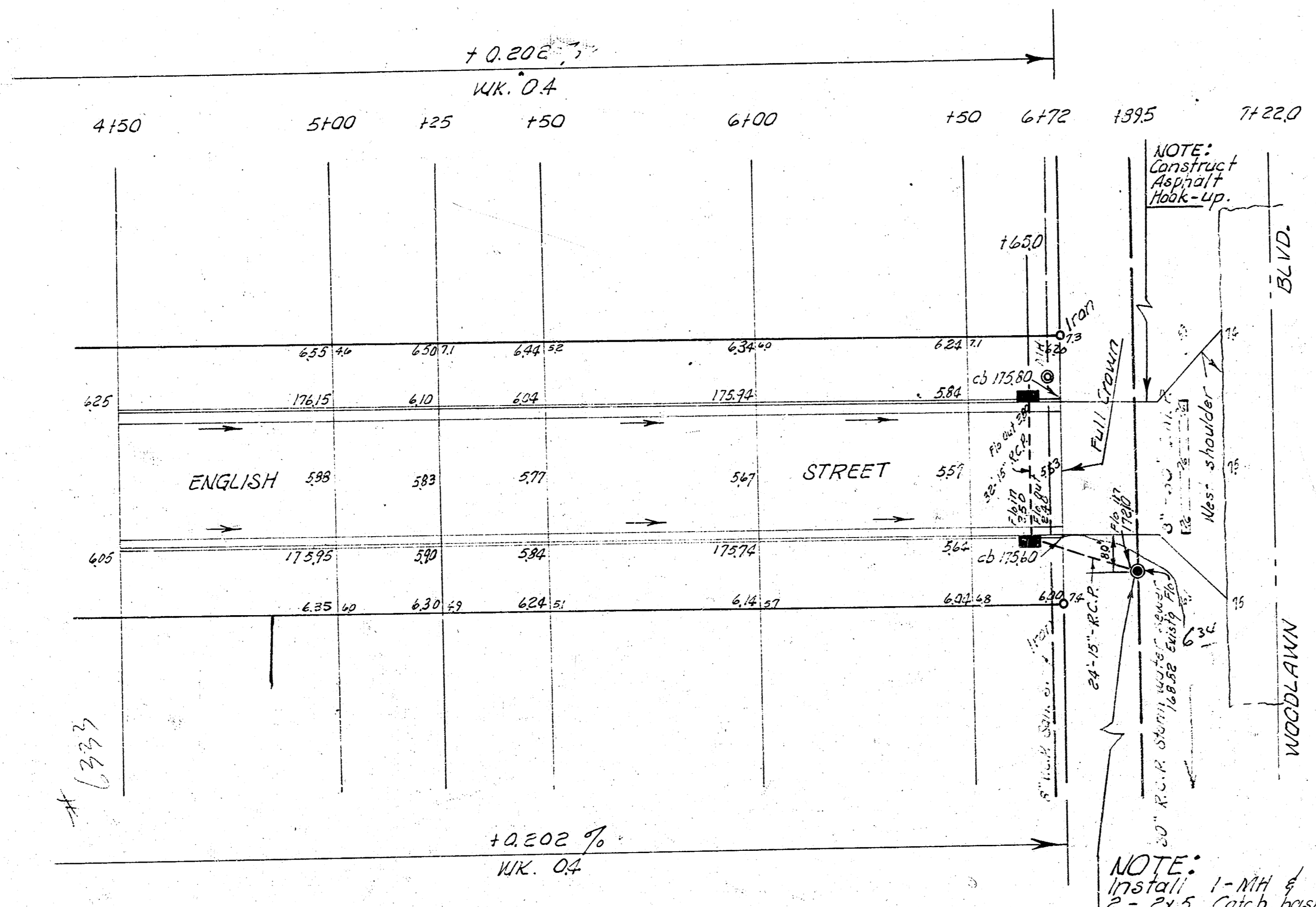
STATIONS	Arc length Face S. curb R=110.00'	Chord length Offset from Face of S. C. R=102.00'	Deflection Total
0+71.41			
0+45.89	31.52'	29.13'	8° 12' 30"
0+14.37	31.51'	29.12'	8° 12' 30"
0+17.14	31.52'	29.13'	8° 12' 30"

EARTH WORK

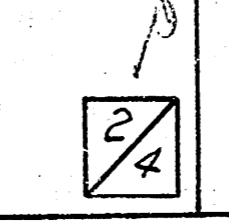
EXCAVATION		FILL COMPACTION	
CITY	PROP.	CITY	PROP.
14.8	510.1	0.0	128.9
14.3	31.3		13.9
1575 Cu Yds	549.9 Cu Yds.	0.0	152.8 Cu Yds.

ENGLISH STREET
 SL LOT 6, BLK. 1, EAST VILLAGE TO WOODLAWN
 26-2-30 A.C.
 CITY OF WICHITA, KANSAS
 B. E. SMITH CITY ENGINEER
 APRIL 1959, PROJ. NO. C17-117





ENGLISH STREET



PROJ. NO. C17-117