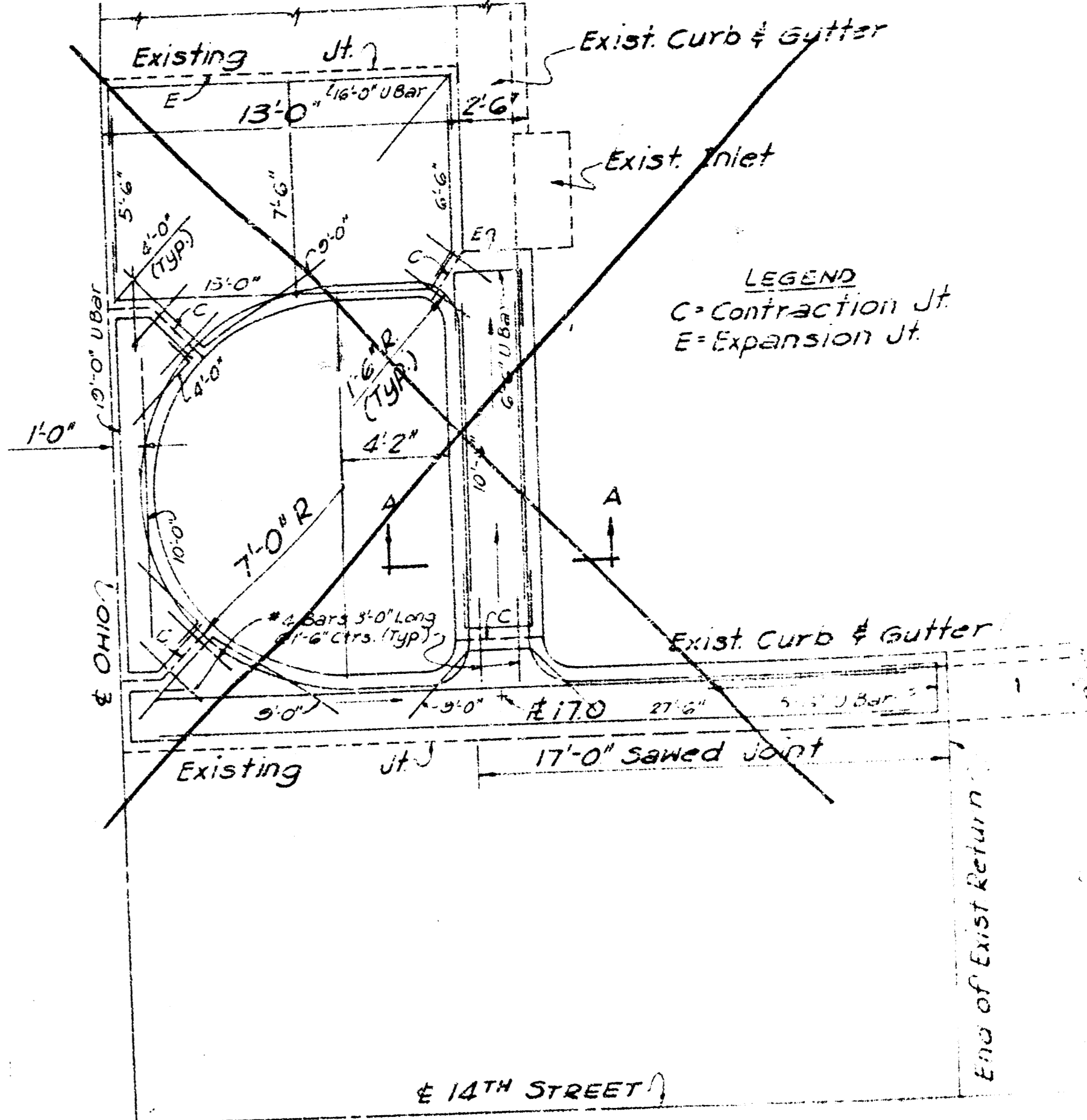
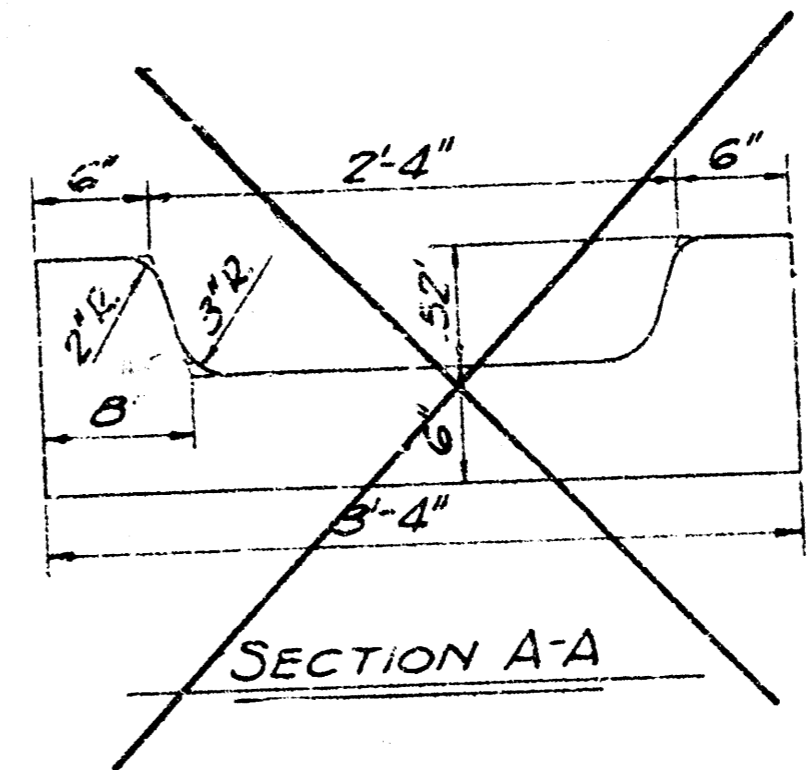


LEGEND
 C = Contraction Jt
 E = Expansion Jt
 L = Longitudinal Key Jt



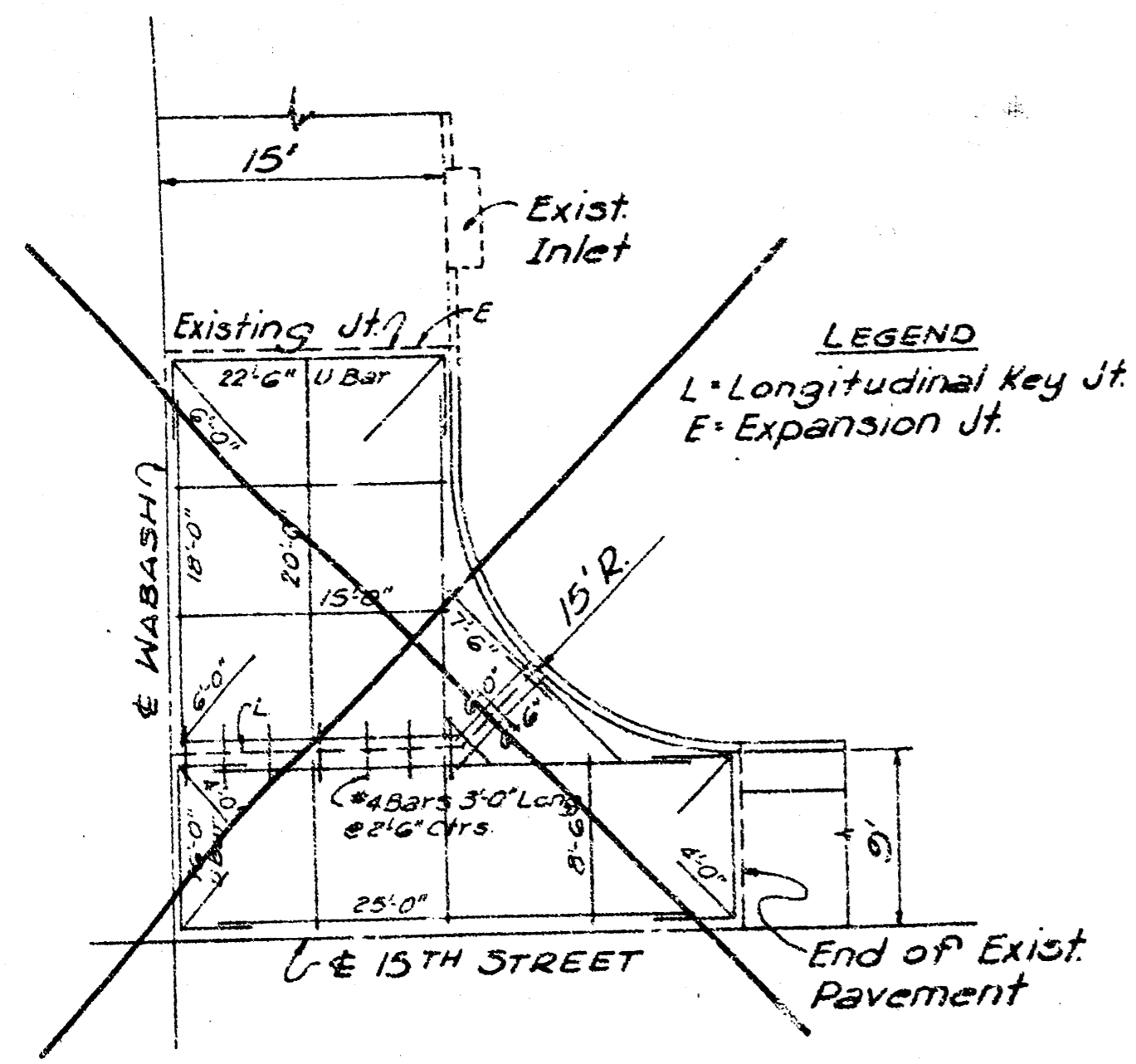
PART INTERSECTION PLAN
 (NOT TO SCALE)

PART INTERSECTION PLAN
 (SCALE: 1\"/>

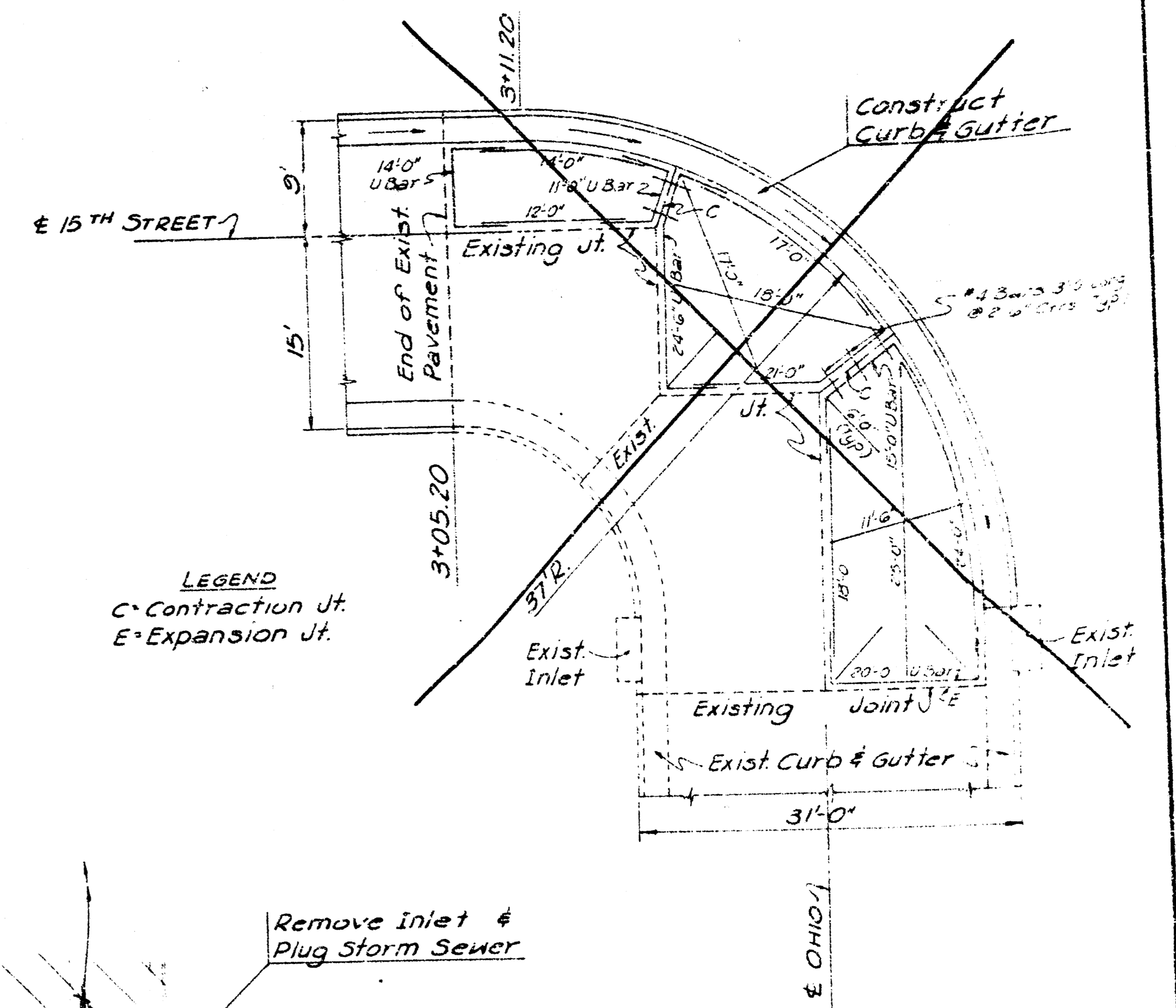
LEGEND
 Pavement Removal
 Sidewalk Removal

NOTE:
 Care shall be exercised to preserve any dowel bars in existing slabs at joints of new pavement to old.

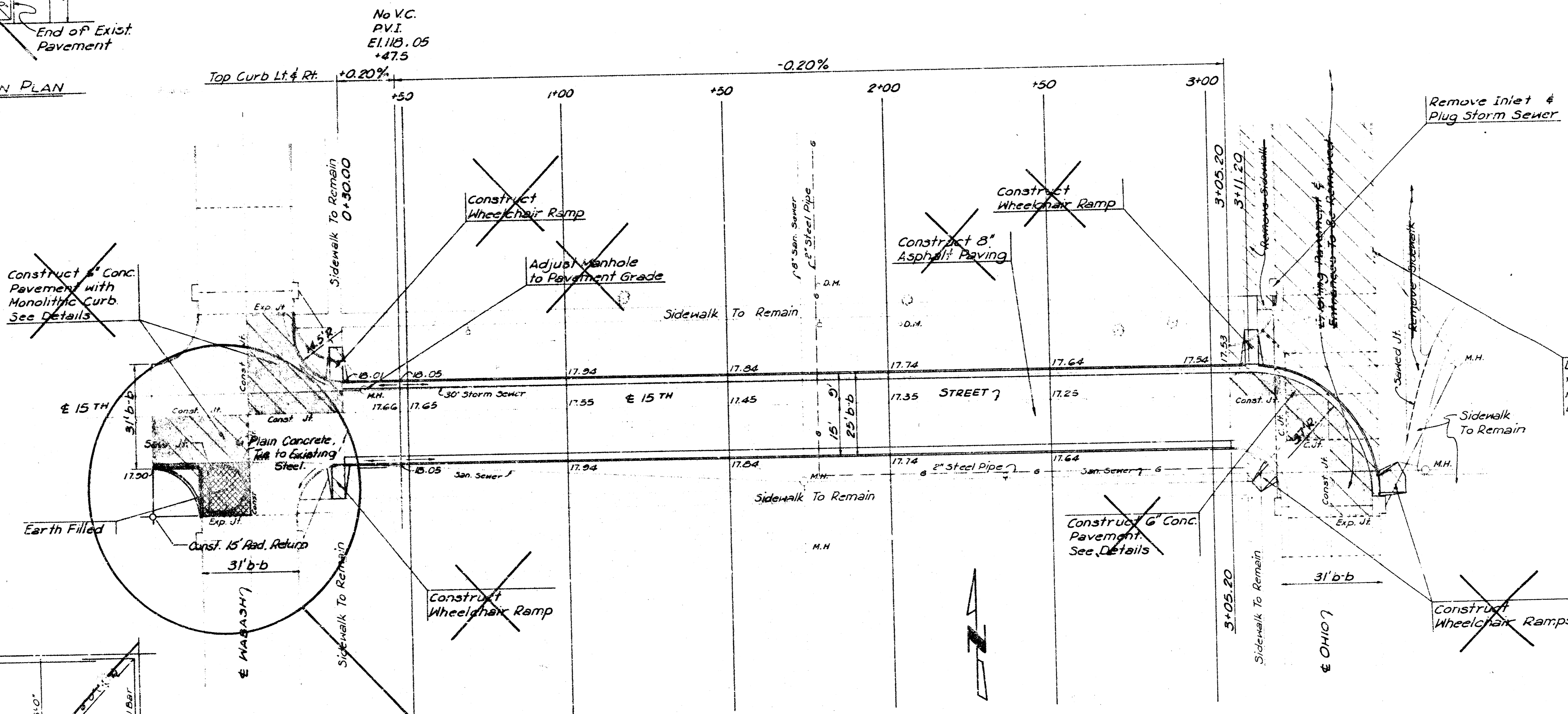
| | | | |
|---|------|----------------------|--|
| City of Wichita | | Dept. of Engineering | |
| Removal of Traffic Diverters at 14th and Wabash | | | |
| Proj. no 815-58-192-50116-430-102-000 | | | |
| SCALE 1"=20' | DATE | DWG No. | |



PART INTERSECTION PLAN
(SCALE: 1"=10')



PART INTERSECTION PLAN
(SCALE: 1"=10')



Construct 6" Conc. Pavement with Monolithic Curb See Details

Construct Wheelchair Ramp

Adjust Manhole to Pavement Grade

Construct 8" Asphalt Paving

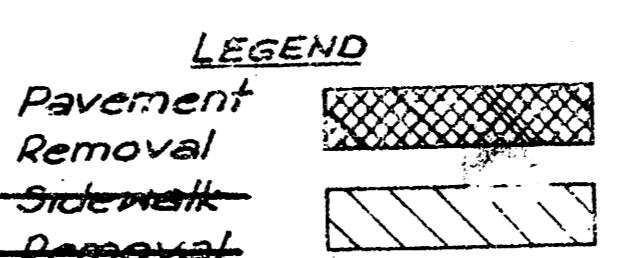
Construct Wheelchair Ramp

Construct 6" Conc. Pavement See Details

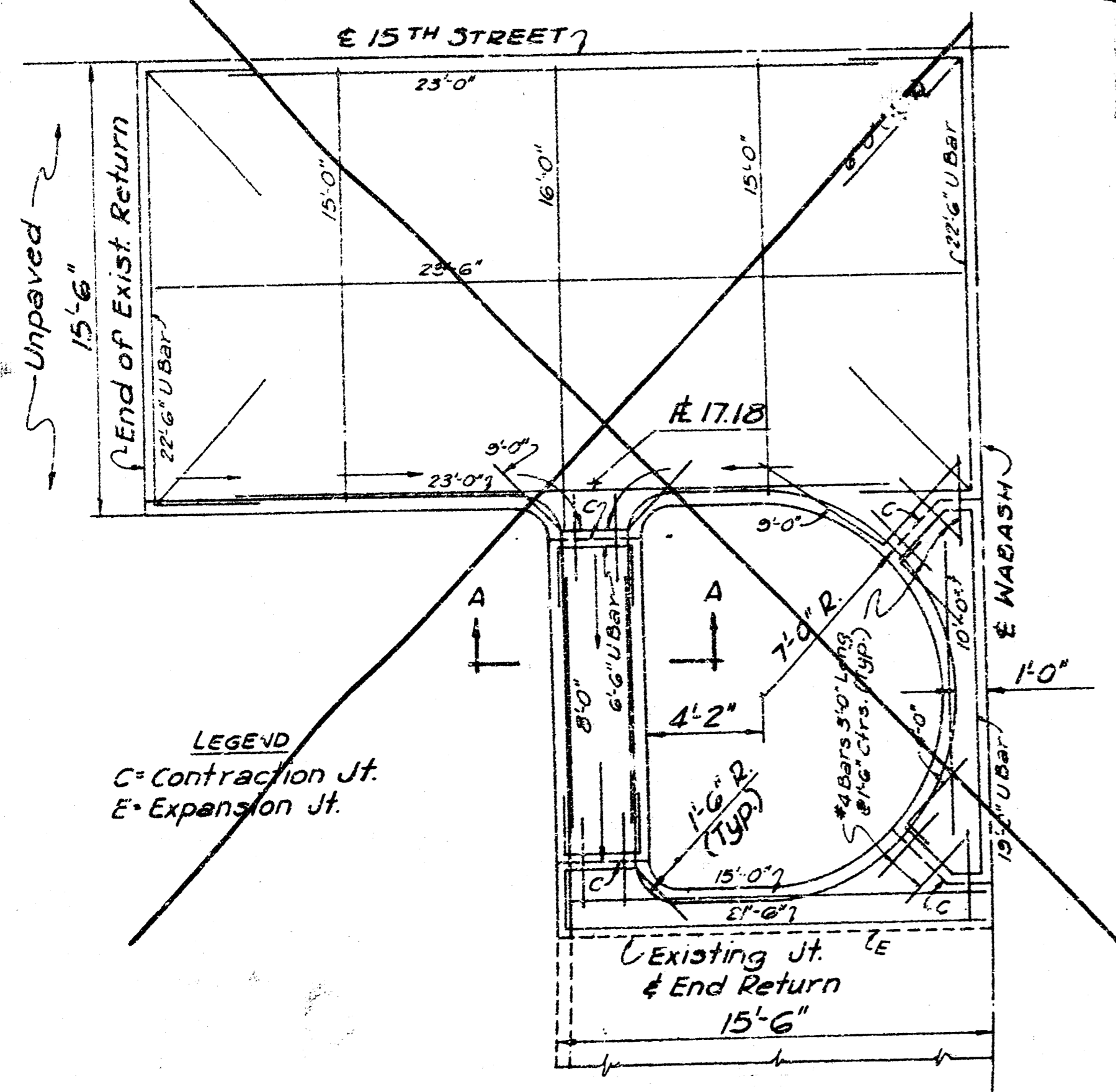
Remove Inlet & Plug Storm Sewer

Lower Existing Gutter Inlet to El. 116.00 and Convert into Area Drain. Reset Existing Frame & Grate.

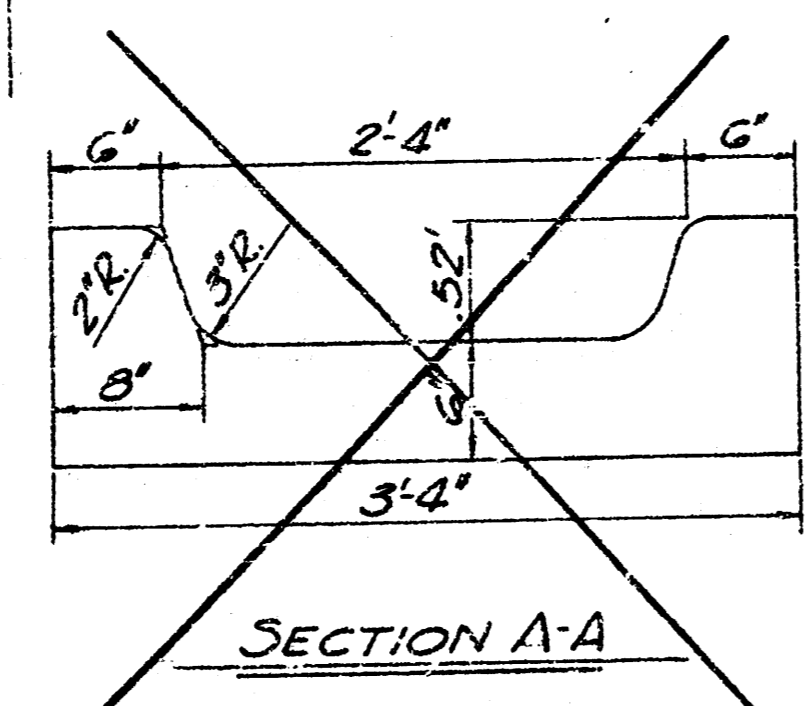
Remove Existing Traffic Diverters Replace w/ 6" Concrete.



NOTE:
Care shall be exercised to preserve any dowel bars in existing slabs at joints of new pavement to old.



PART INTERSECTION PLAN
(SCALE: 1"=5')



SECTION A-A

| | | |
|---|------|----------------------|
| City of Wichita | | Dept. of Engineering |
| Removal of Traffic Diverters at 15th and Wabash | | |
| Proj. no. 815-58-192-5016-430-102-000 | | 2/2 |
| SCALE 1"=20' | DATE | DRAWING NO. |