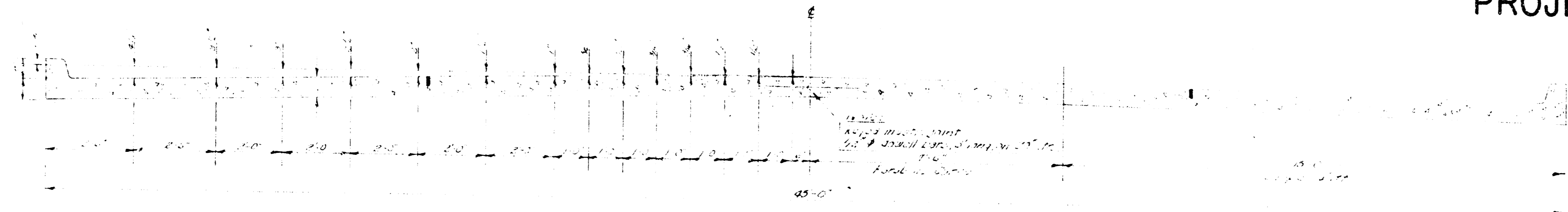


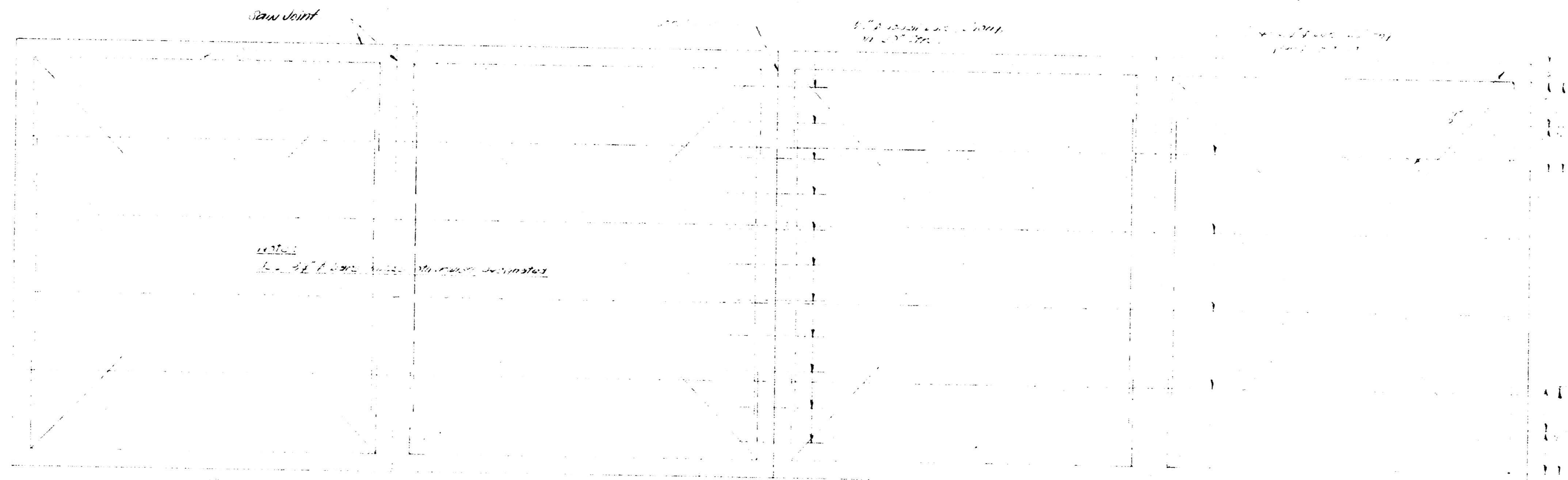
INTERSECTIONS  
 17 TH. STREET & PARK PLACE  
 21 ST. STREET & PARK PLACE

PROJECT NO. C11-7

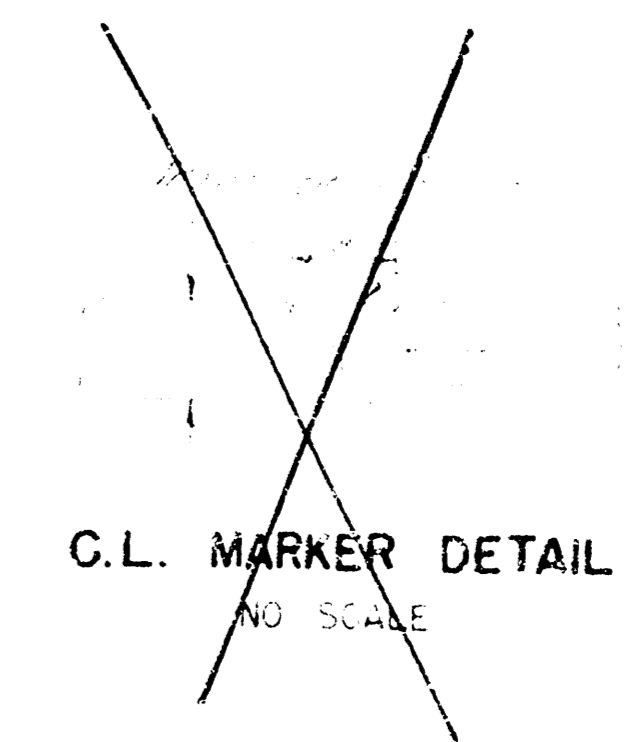


TYPICAL SECTION  
 NO SCALE

TRANSVERSE & LONGITUDINAL  
 JOINT DETAIL  
 NO SCALE



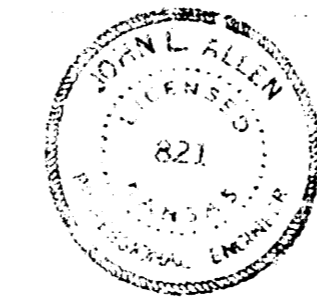
STEEL PATTERN  
 NO SCALE



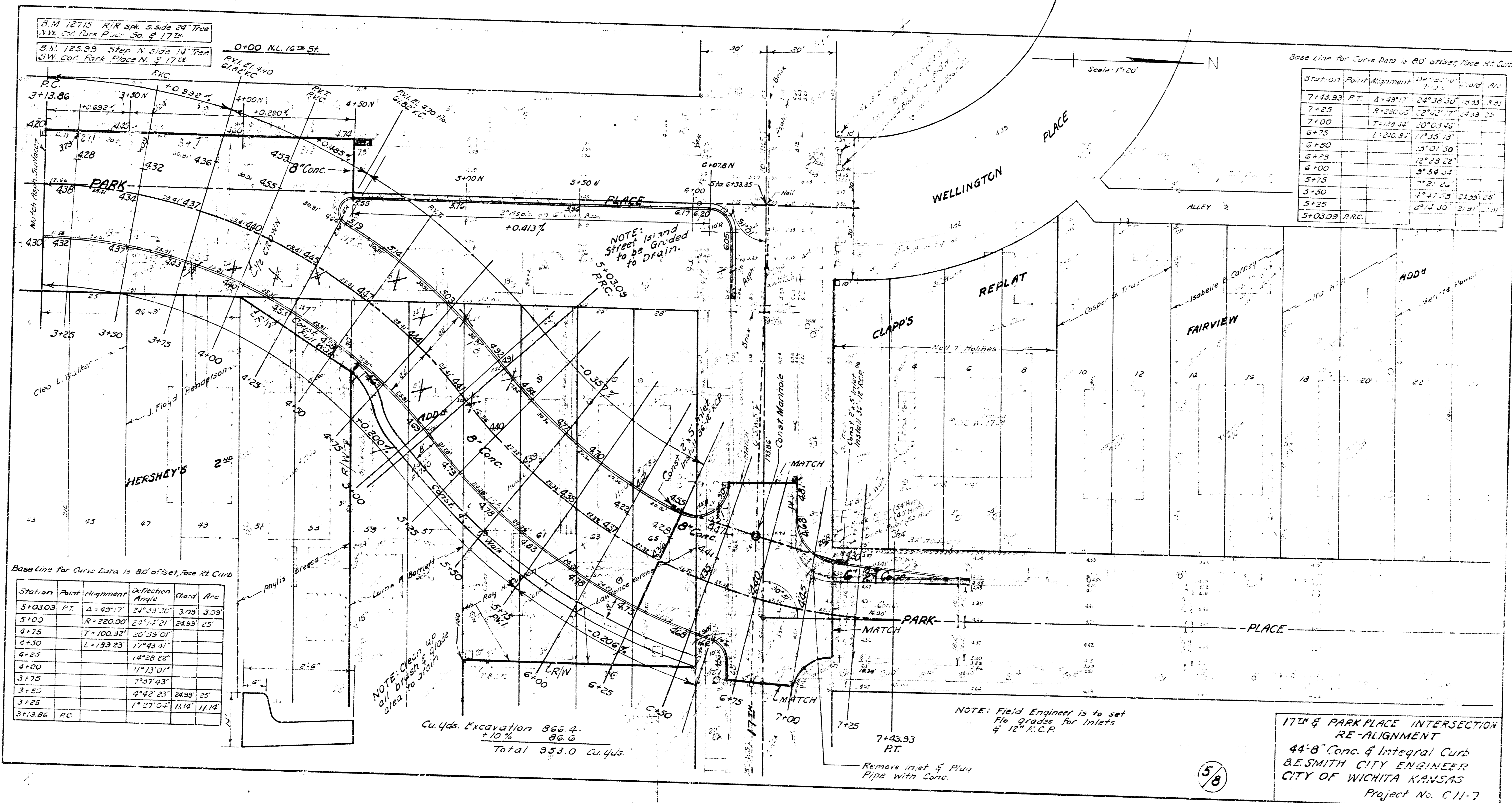
C.L. MARKER DETAIL  
 NO SCALE

NOTE -

WHERE CURBS IN THE SAME SECTION  
 ARE AT DIFFERENT ELEVATIONS USE  
 ELEVATION SHOWN ON PLAN FOR  
 CONSTRUCTION JOINT.



2/8



B.M. 12715 R/R Spk. S. Side 20' Tree  
 1/4" W. of Park Place 50' & 17' 2"

B.M. 12599 Spk. N. Side 10' Tree  
 S.W. Cor. Park Place N. & 17' 2"

Base Line for Curve Data is 80' offset, face Rt. Curb

Station	Point	Alignment	Chord	Chord Arc
7+43.93	P.T.	1+29°17'	24°28'30"	635' 4.53'
7+25		R=200.00'	12°42'17"	249' 25'
7+00		L=129.23'	10°03'46"	
6+75		L=129.23'	17°43'41"	
6+50			18°28'28"	
6+25			11°13'01"	
6+00			7°57'43"	
5+75			4°42'23"	2499' 25'
5+50			1°27'02"	1118' 11.18'
5+25				
5+00.00	P.A.C.			

Base Line for Curve Data is 80' offset, face Rt. Curb

Station	Point	Alignment	Deflection Angle	Chord	Chord Arc
5+03.03	P.T.	Δ=68°17'	27°33'30"	320'	338'
5+00		R=220.00'	27°12'21"	249'	25'
4+75		L=100.32'	30°53'01"		
4+50		L=193.23'	17°43'41"		
4+25			18°28'28"		
4+00			11°13'01"		
3+75			7°57'43"		
3+50			4°42'23"	2499' 25'	
3+25			1°27'02"	1118' 11.18'	
3+13.86	P.C.				

Cu. Yds. Excavation 866.4  
 110.14  
 Total 953.0 Cu. Yds.

NOTE: Field Engineer is to set  
 Ho. grades for inlets  
 & 12" R.C.P.

Remove Inlet & Plus  
 Pipe with Conc.

17th & PARK PLACE INTERSECTION  
 RE-ALIGNMENT  
 44" B' Conc. & Integral Curb  
 B. SMITH CITY ENGINEER  
 CITY OF WICHITA, KANSAS  
 Project No. C-11-7

5/8