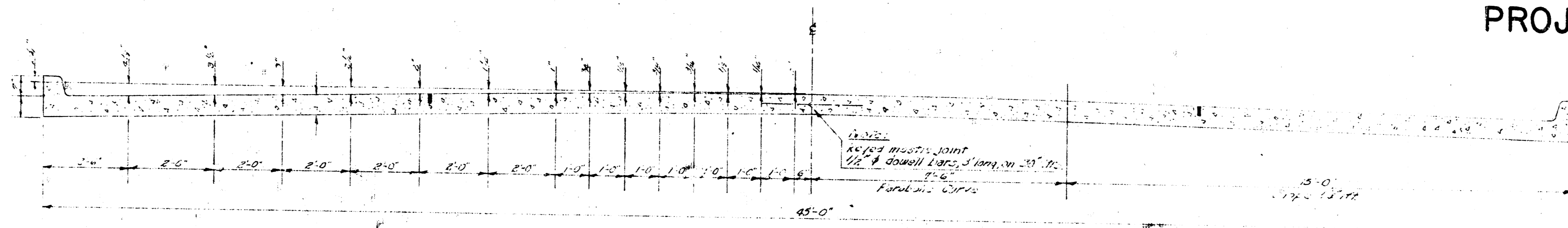


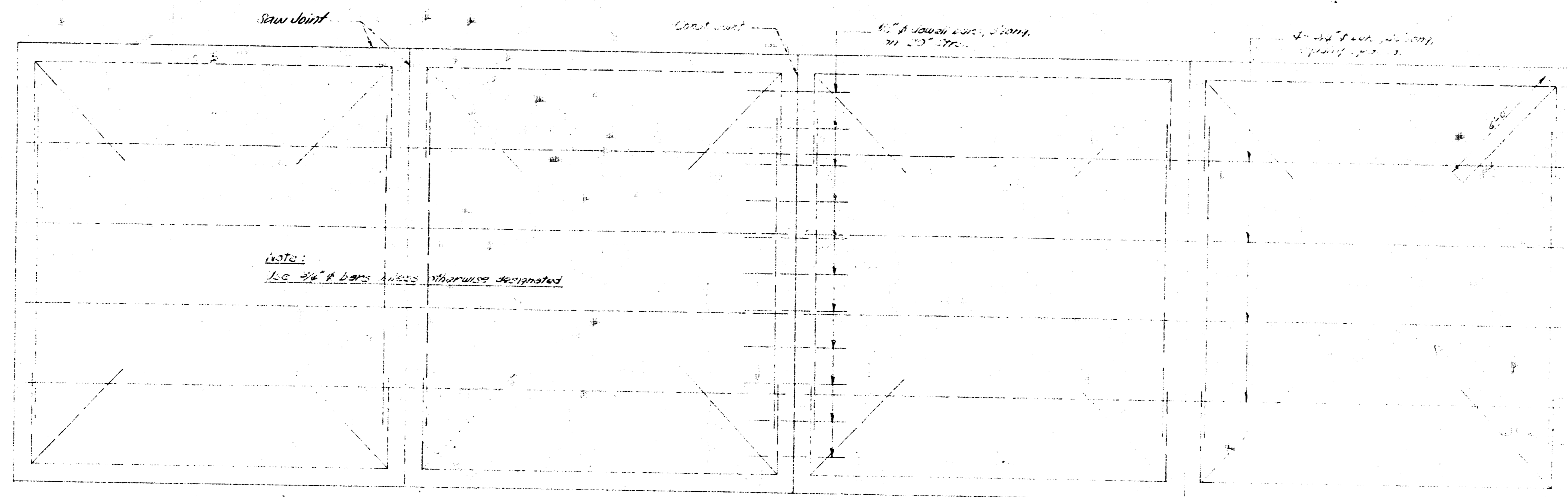
INTERSECTIONS
17 TH. STREET & PARK PLACE
21 ST. STREET & PARK PLACE

PROJECT NO. C11-7

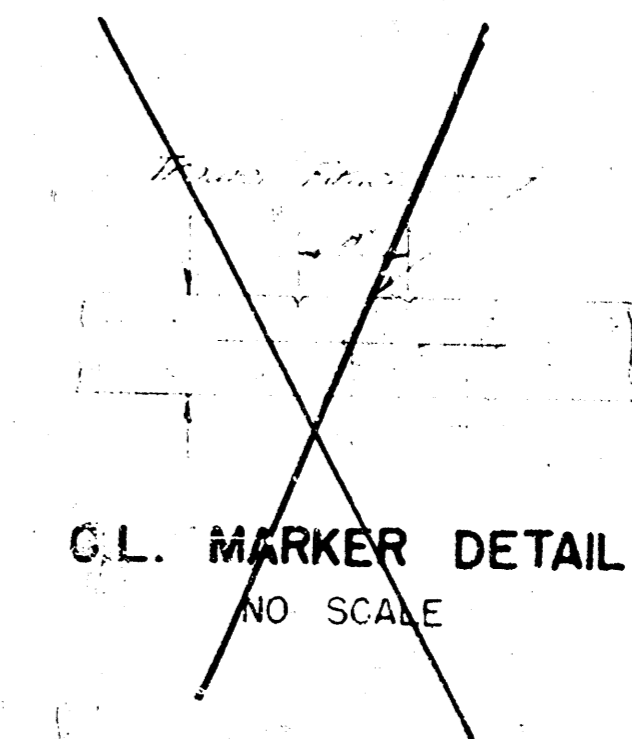


TYPICAL SECTION
NO SCALE

TRANSVERSE & LONGITUDINAL
JOINT DETAIL
NO SCALE

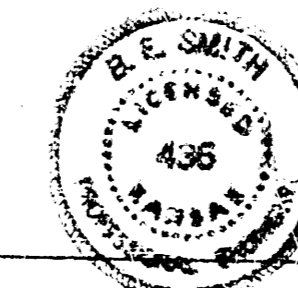


STEEL PATTERN
NO SCALE

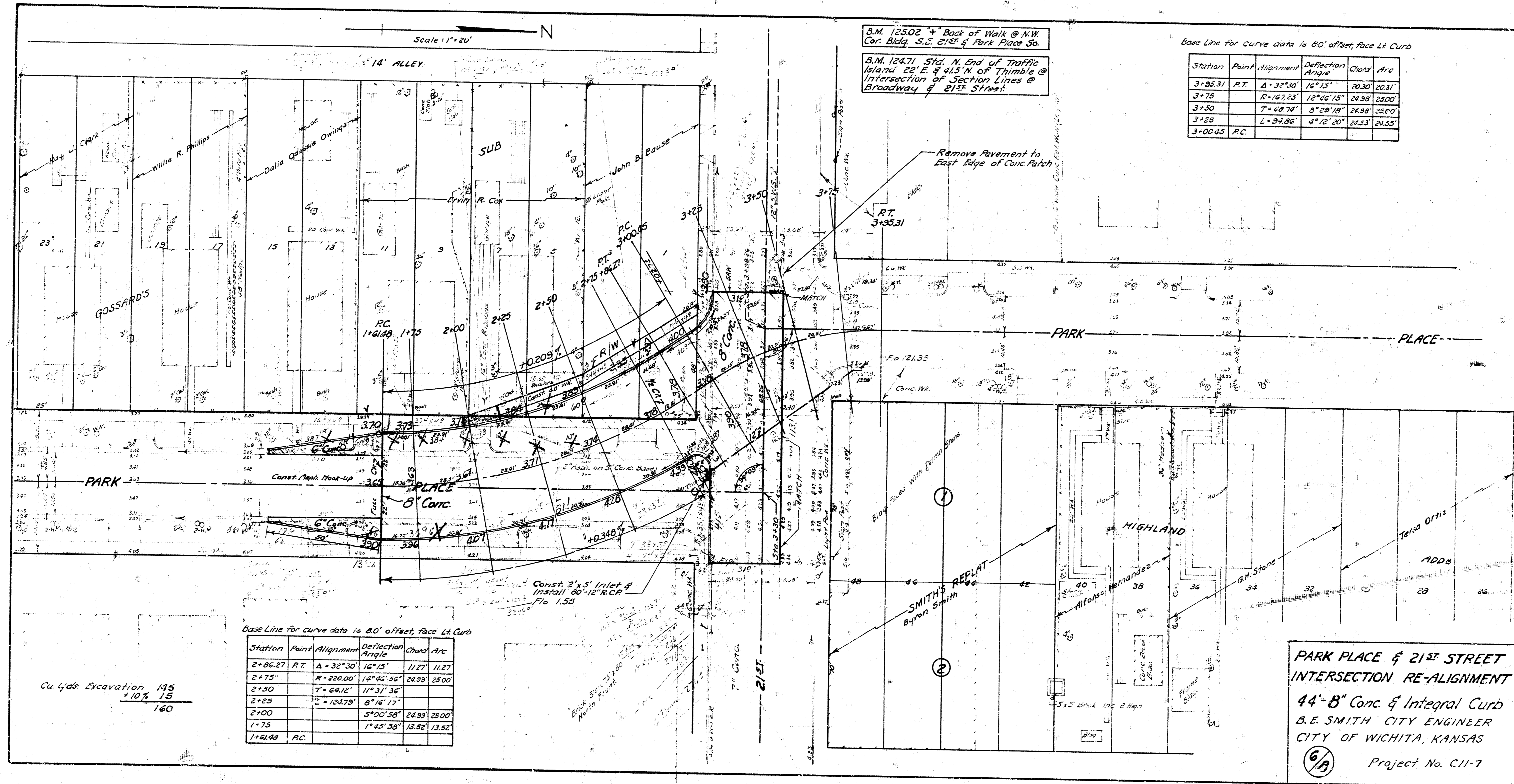


C.L. MARKER DETAIL
NO SCALE

NOTE -
WHERE CURBS IN THE SAME SECTION
ARE AT DIFFERENT ELEVATIONS USE
ELEVATION SHOWN ON PLAN FOR
CONSTRUCTION JOINT.



2/8



B.M. 12502 4' Back of Walk @ N.W. Cor. Bldg. S.E. 21st & Park Place So.
 B.M. 12471 5th N. End of Traffic Island 22' E. & 41.5' N. of Thimble @ Intersection of Section Lines @ Broadway & 21st Street.

Base Line for Curve data is 80' offset, face Lt. Curb

Station	Point	Alignment	Deflection Angle	Chord	Arc
3+85.31	P.T.	$\Delta = 32^{\circ}30'$	$16^{\circ}15'$	20.30	20.31
3+75		$R = 220.00'$	$14^{\circ}05'30''$	24.98	25.00
3+50		$T = 64.12'$	$11^{\circ}31'30''$		
3+25		$\Delta = 124.78'$	$6^{\circ}16'17''$		
2+00			$5^{\circ}00'58''$	24.99	25.00
1+75			$1^{\circ}45'38''$	18.52	13.52
1+61.49	P.C.				

Base Line for curve data is 80' offset, face Lt. Curb

Station	Point	Alignment	Deflection Angle	Chord	Arc
2+06.27	P.T.	$\Delta = 32^{\circ}30'$	$16^{\circ}15'$	11.27	11.27
2+75		$R = 220.00'$	$14^{\circ}05'30''$	24.98	25.00
2+50		$T = 64.12'$	$11^{\circ}31'30''$		
2+25		$\Delta = 124.78'$	$6^{\circ}16'17''$		
2+00			$5^{\circ}00'58''$	24.99	25.00
1+75			$1^{\circ}45'38''$	18.52	13.52
1+61.49	P.C.				

Cu Yds. Excavation 145
 +10% 15
 160

**PARK PLACE & 21ST STREET
 INTERSECTION RE-ALIGNMENT**
 44'-8" Conc. & Integral Curb
 B.E. SMITH CITY ENGINEER
 CITY OF WICHITA, KANSAS
 (6/A) Project No. C11-7