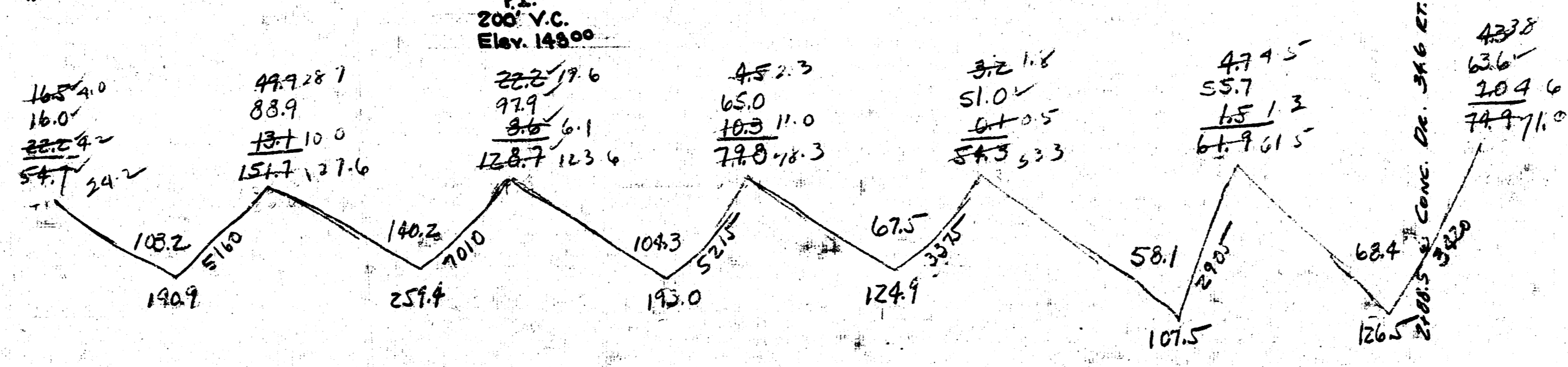
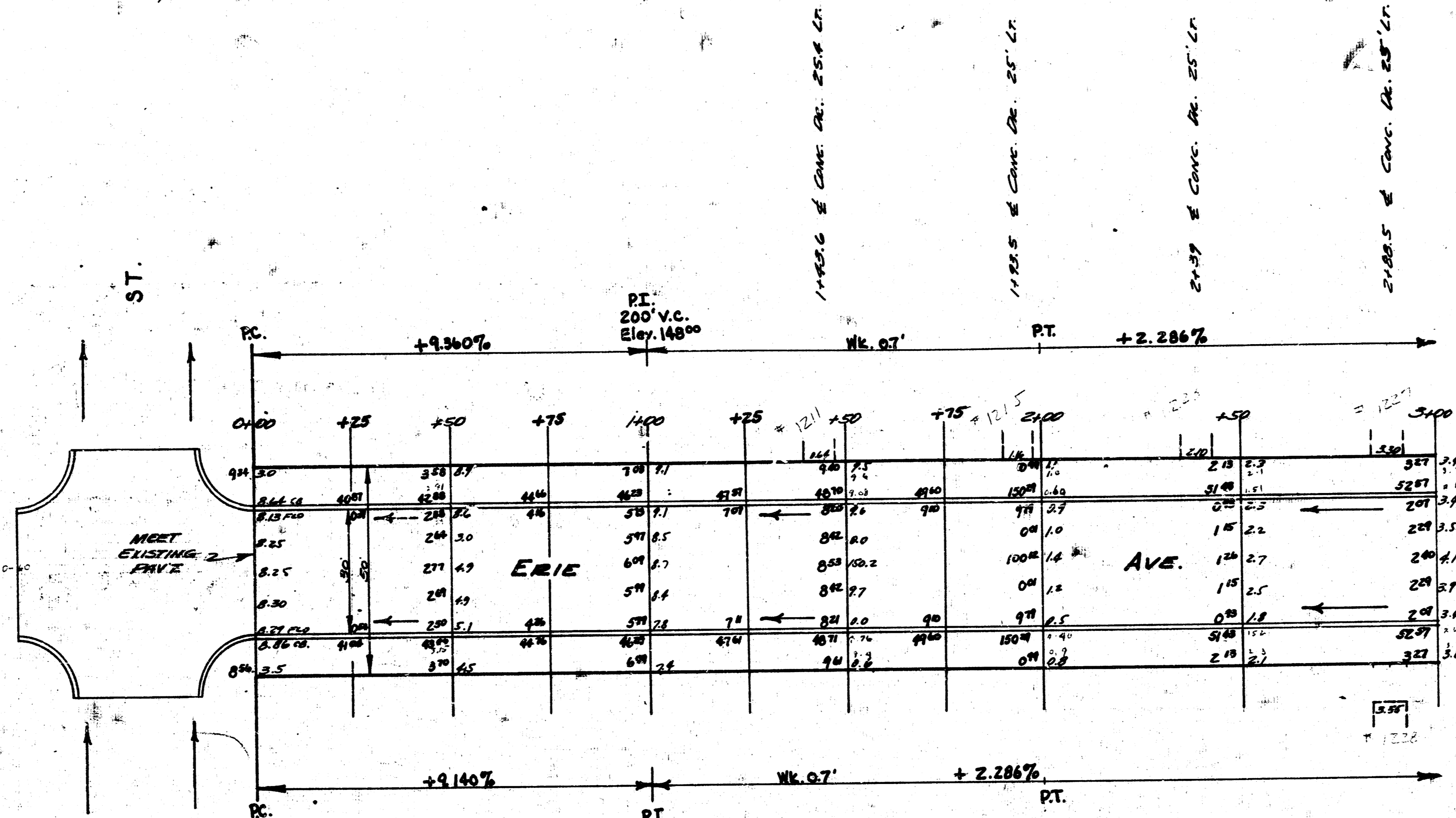
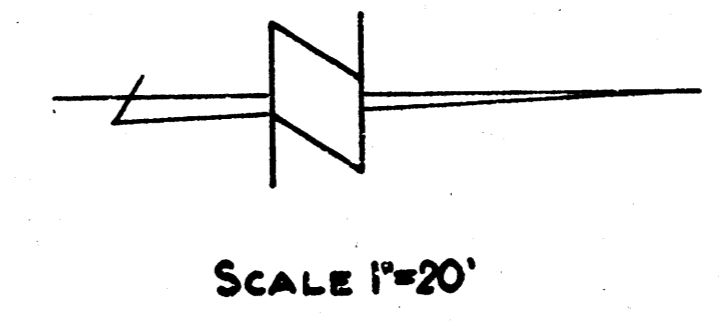


MG
K-10

B.M. 145.30 "X" ON TOP CB. W.S. ERIE 1/2 MILE S. END RAD. 3.14. C&G. 13TH

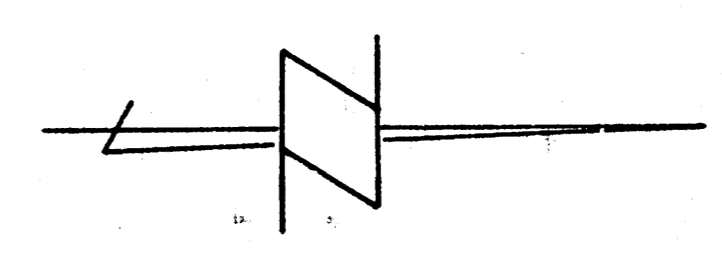


1
2

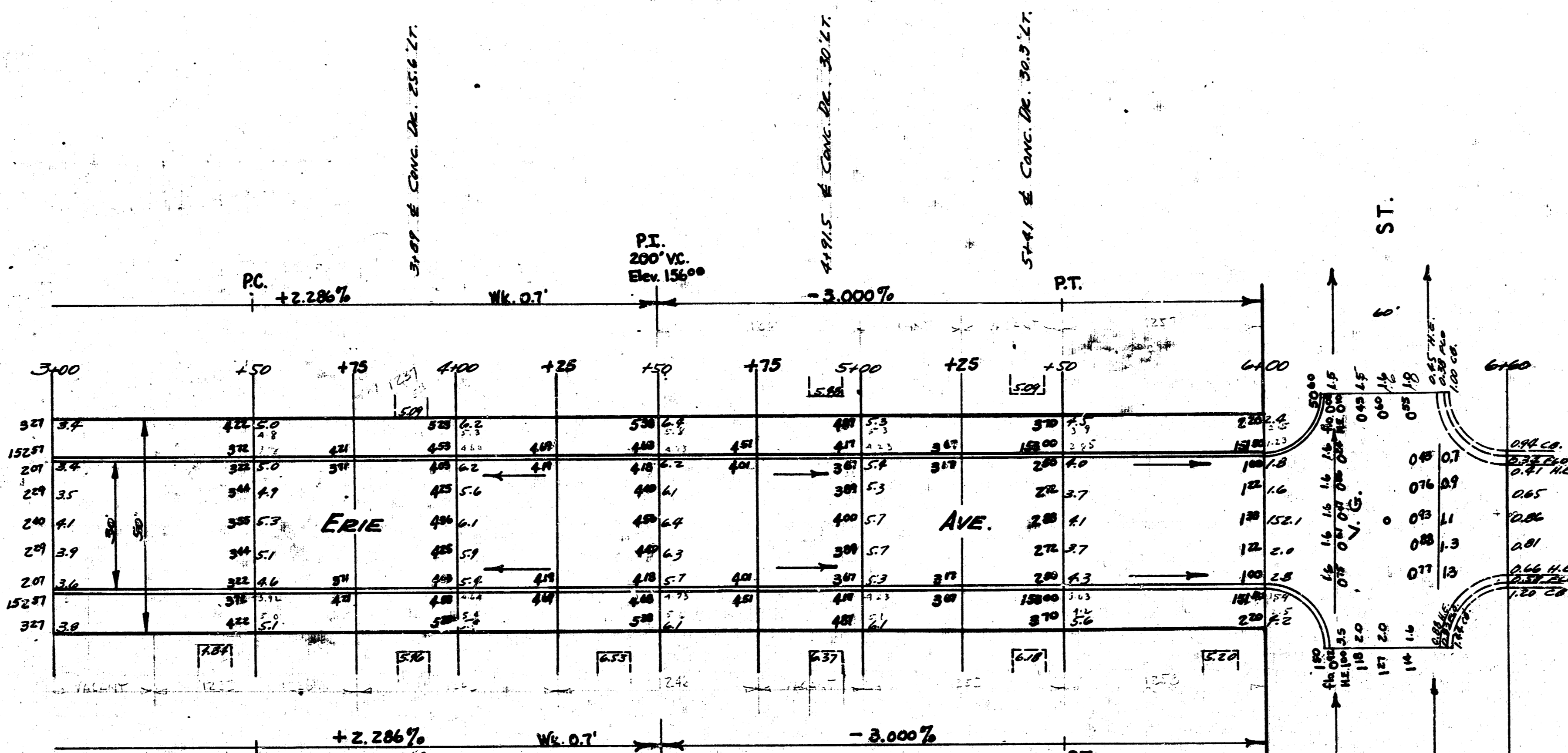


ERIE AVE.
 SLIITH ST. TO NL.12TH ST.
 30' Conc. & Cb.
 CITY OF WICHITA, KANSAS
 LKWHITE CITY ENGINEER
 OCT. 1951 PROJ. NO. C11-160

B.M. 145.20 1" on top of S.W. ERIE S. END RAIL. S.W. COR. 13TH



TIES TO 160N E. OF ERIE & 12TH
 76.0' S.W. TO N.E. COR. OF Hq. #2817 E. 12TH
 68.55' N.W. TO S.E. COR. OF Hq. #1301 N. ERIE
 71.0' N.E. TO S.W. COR. OF Hq. #1302 N. ERIE



EXCAVATION:

Prop.	City
190.9	29.0
259.4	12.0
193.0	52.5
124.9	94.1
107.5	9.4
126.5	
141.8	
158.4	
165.9	
166.3	
152.1	
126.4	
1919.1	
191.9	
+107%	2111.0 cu yd

