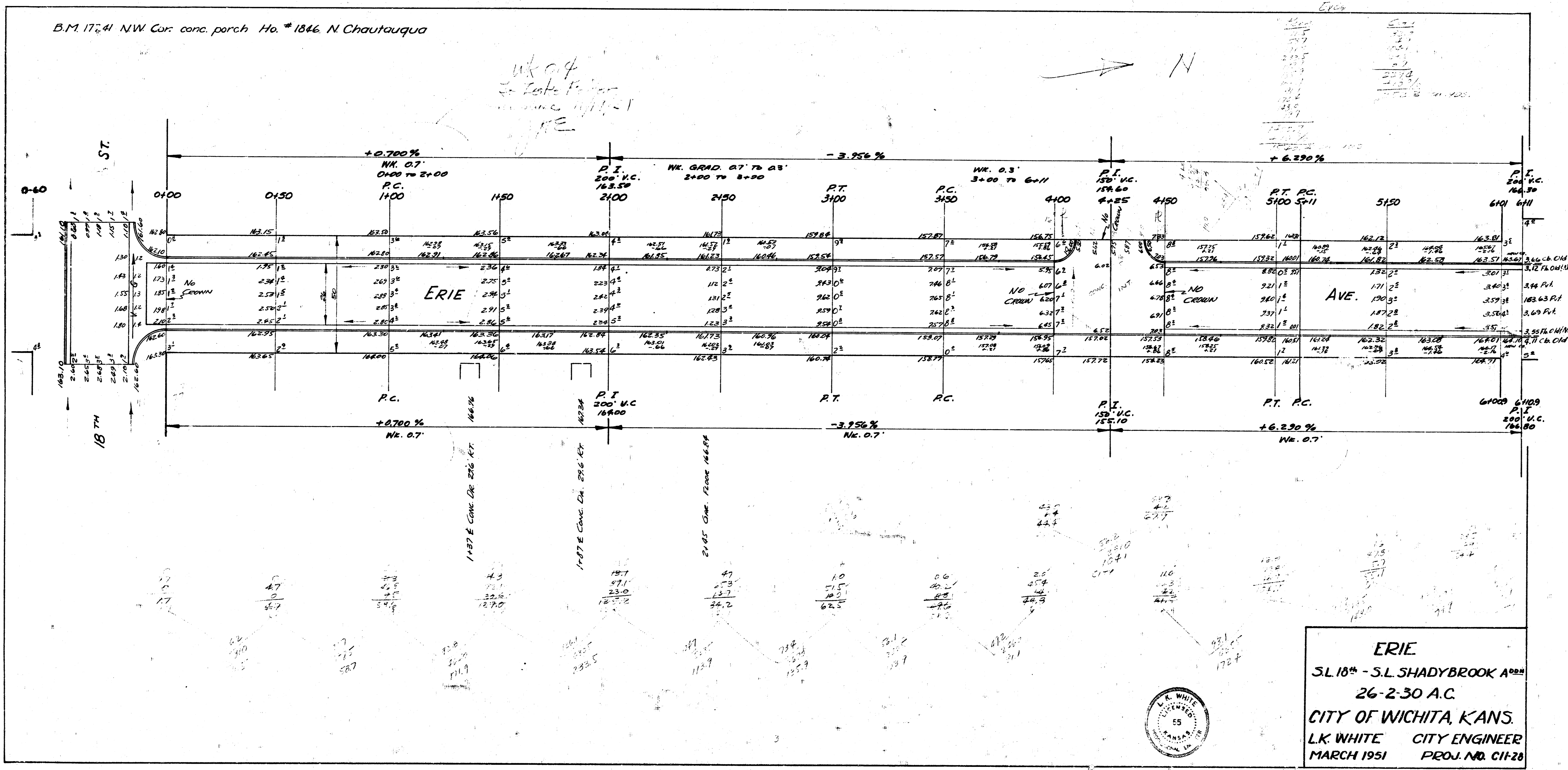


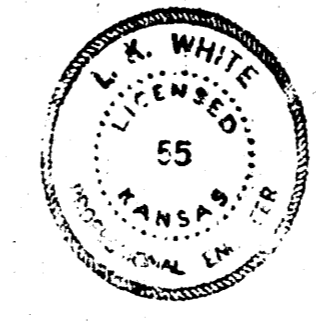
5-1

B.M. 17.41 NW Cor. conc. porch Ho. # 1846 N Chautauqua

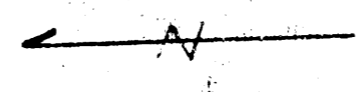
Handwritten notes:
W.C. 0.4
to Lake Park
in June 1911-1
FE



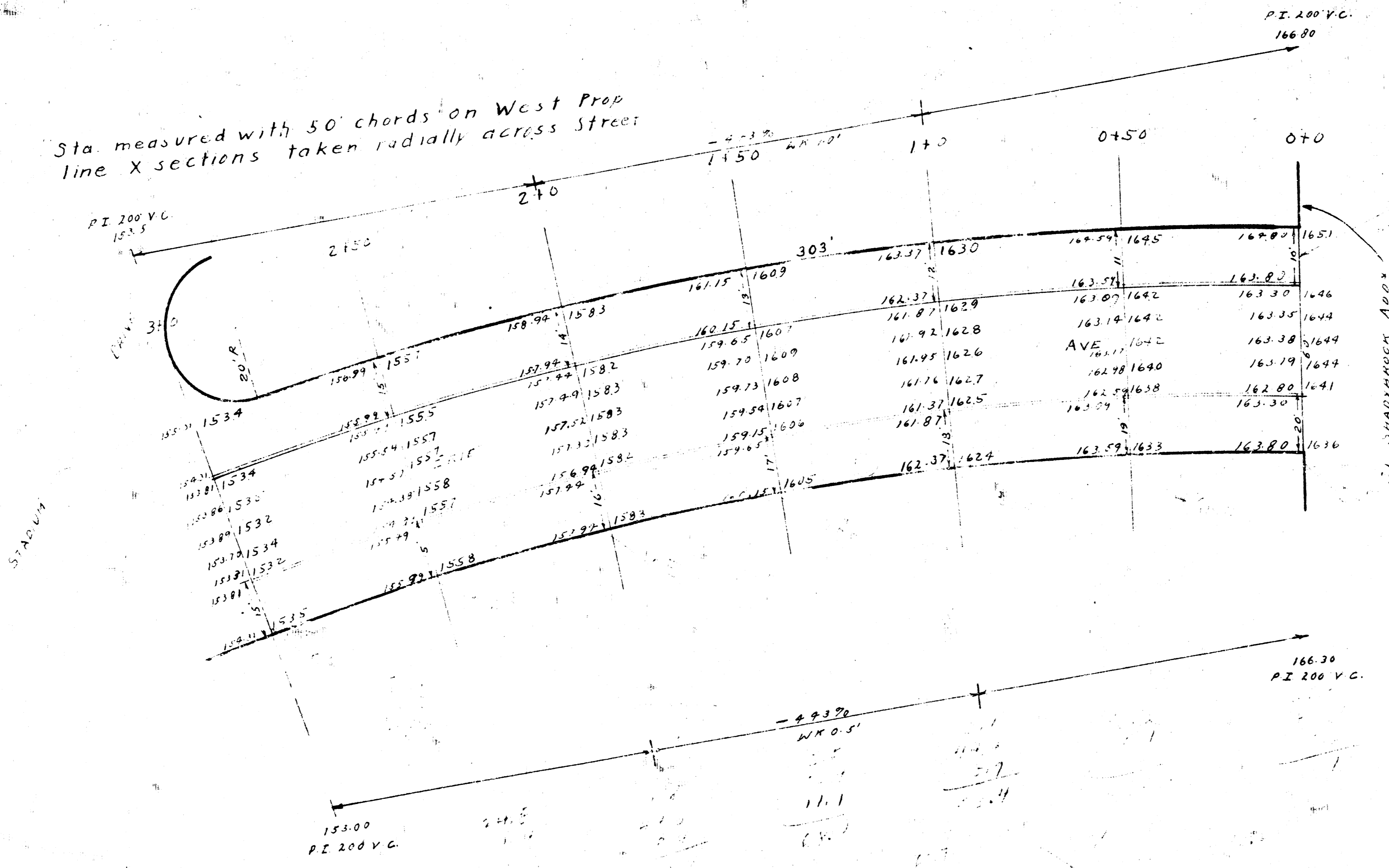
ERIE
 S.L. 18th - S.L. SHADYBROOK A222
 26-2-30 A.C.
 CITY OF WICHITA, KANS.
 L.K. WHITE CITY ENGINEER
 MARCH 1951 PROJ. NO. C11-28



1942
 ERIE AVE - SL SHADYBROOK ADD TO SL STADIUM DRIVE
 30' CONC WITH INT CB



Sta measured with 50' chords on West Prop
 line X sections taken radially across Street



Note: C of pavement to be shifted east to match C of 50' RIW of Erie south distance from curb to Prop line is indicated at each Sta.

B.M.-168.31 - Prop Iron SW. Cor Chautaugua + SL of Add