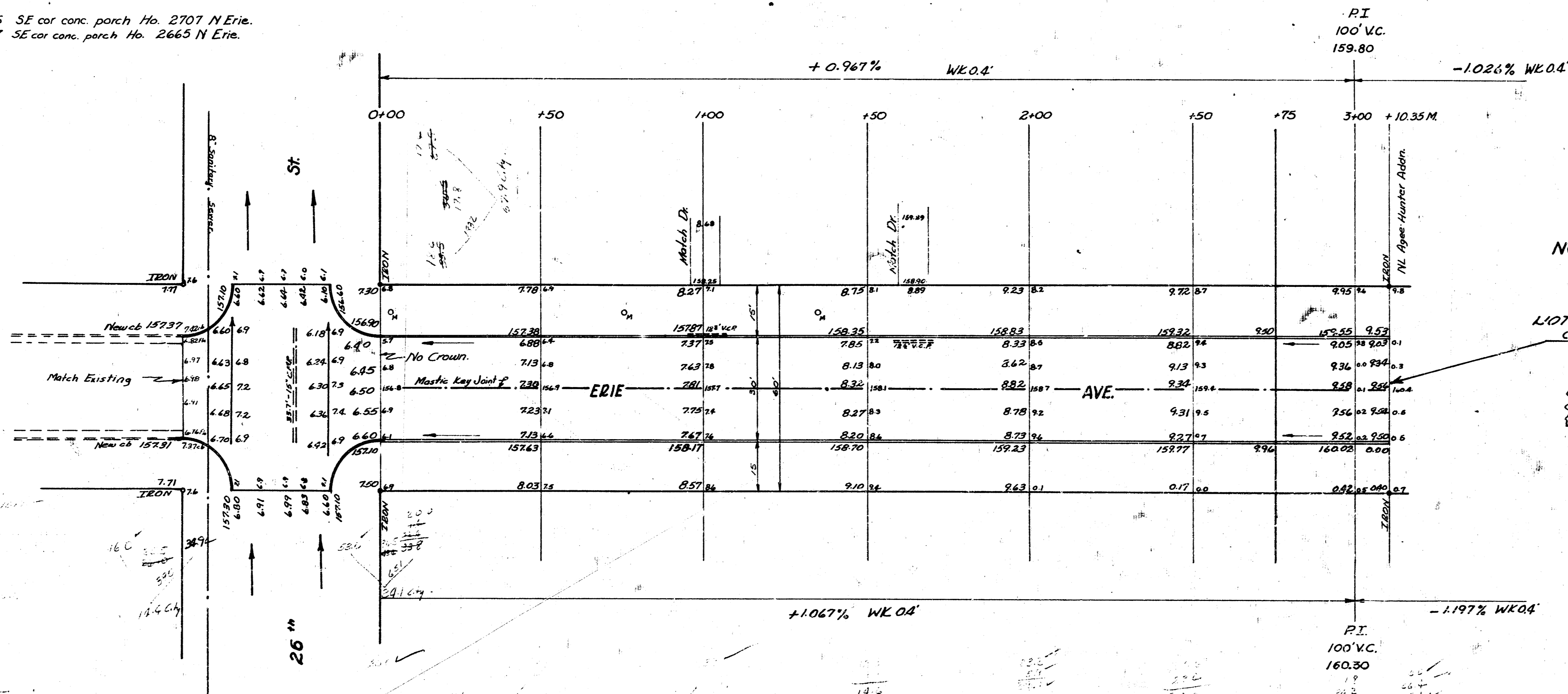
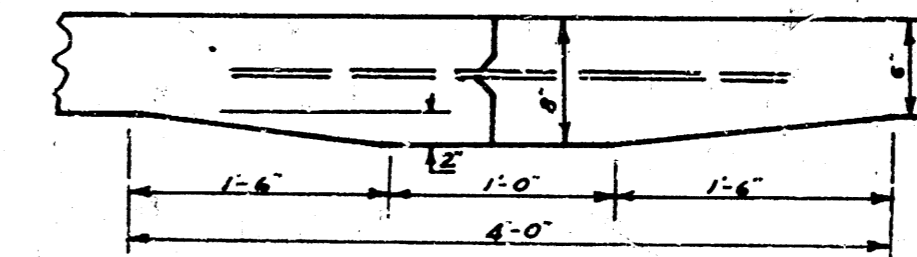


BM: - 159.46 SE cor conc. parch. Ho. 2707 N Erie.  
 BM: - 160.37 SE cor conc. parch. Ho. 2665 N Erie.



**NOTICE TO CONTRACTOR:-**  
 Entrance pipes to be disposed of in accordance with instructions of Dirt Checker.

**NOTE:**  
 Contractor to Grade Dirt Approach.



Use 1/2" # bars - 5' Long on 30" centers.  
**DETAIL OF MASTIC KEY JOINT**  
 No Scale

**NOTICE TO CONTRACTOR**  
 Entrance pipes to be disposed in accordance with instructions of Dirt Checker.

**ERIE AVE**  
 SL 26" NL Agee-Hunter Addn.  
 30 Conc & Cb.  
**CITY OF WICHITA, KANSAS**  
 B.E. SMITH CITY ENGINEER  
 MARCH 1956 PBW NO. C15-119



Survey Error  
 Not Ground  
 Checked 1/27

City -  
 1084  
 166  
 1175 00.48