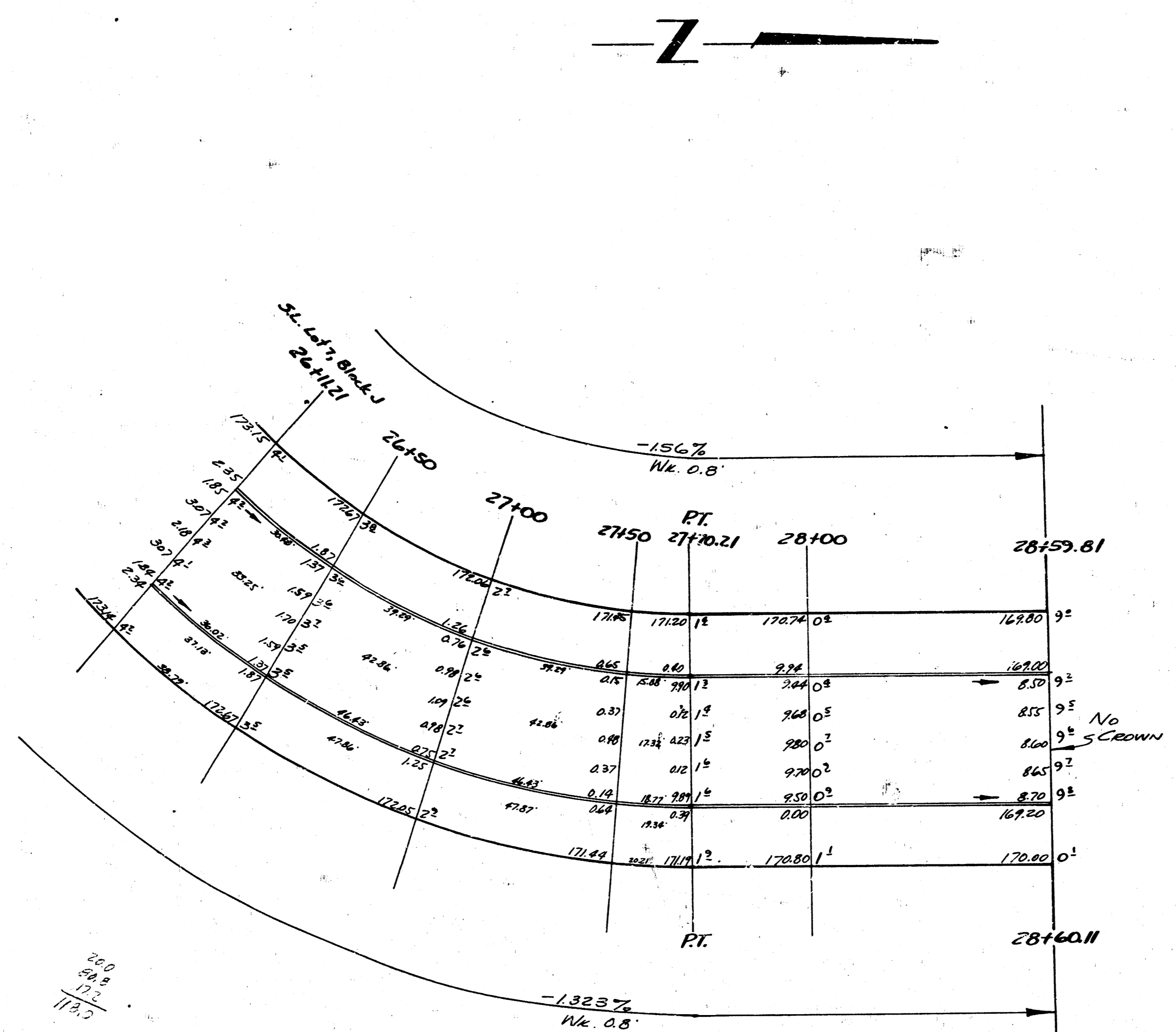


B.M. 133.55 4" in Globe E. Cb. of Grove S.L. 21<sup>st</sup>  
 B.M. 148.57 Iron N.L. 22<sup>nd</sup> E.L. Poplar  
 B.M. 168.76 Knurled 60° spike S.W. side cor. post @ 25<sup>th</sup> - & Volusia N.

STATIONING ON E.P.L.  
 CURVE DATA FOR 9' OFFSET FROM E.P.L.  
 E = 201.00  
 A = 89° 30'  
 D = 29° 30' 19"  
 L = 313.94'  
 DEFLECT FOR 1' ARC = 0.55160"



260  
 54.0  
 178.0

129  
 70.0  
 181  
 155.0

77  
 60.7  
 13.2  
 51.3

32  
 48.3  
 5.4  
 46.7

14  
 47.0  
 4.3  
 53.3



**ERIE**  
 S.L. LOT 7, BLOCK J - S.L. 25<sup>th</sup>  
 AUDREY MATLOCK HTS. 1<sup>st</sup>  
 30' CONC. & CB.  
 CITY OF WICHITA, KANS.  
 L.K. WHITE CITY ENGINEER  
 APRIL 1951 PROJ. NO. C11-65