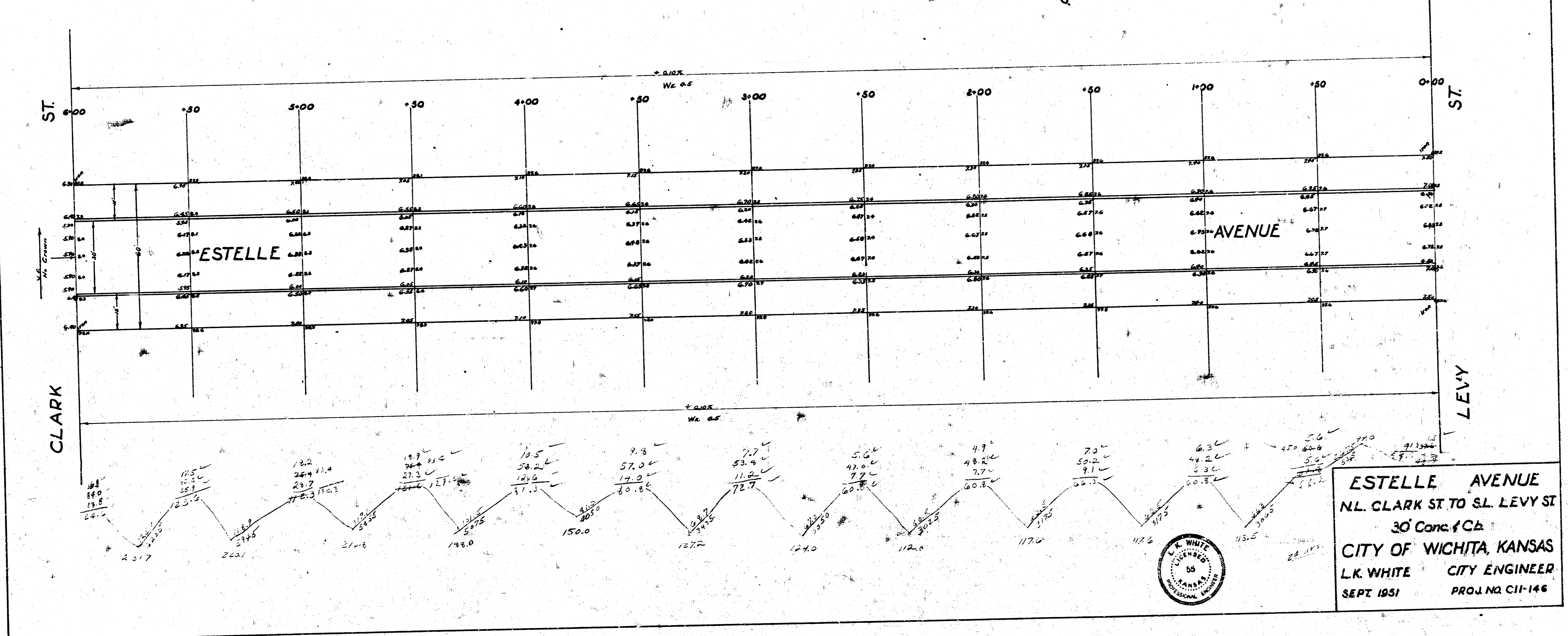
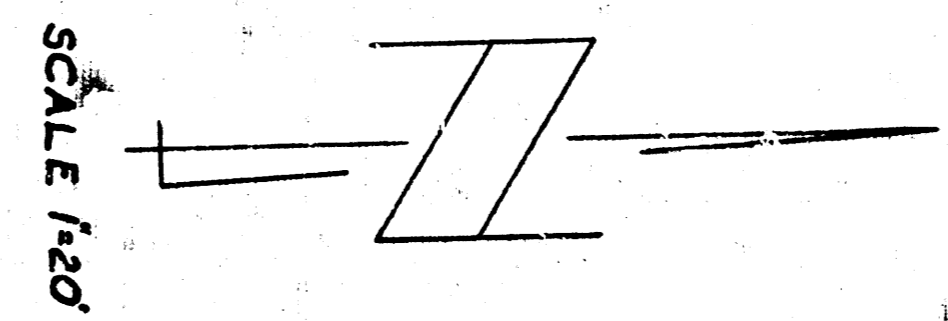


514

B.M. SW. Cor. Conc. porch H# 2604 ± Levy Elev. 100.69

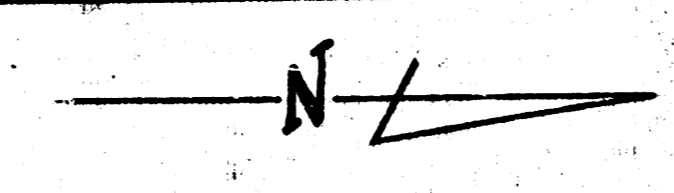
Exc.

1201
237.7
206.1
200.3
188.0
158.0
157.0
134.0
120.0
117.0
115.5
79.0
1312.5
-107.0
1197.3



MOB 5

EM. 9991 - S.E. corner 1st stop No. 1833 S. Estelle.



Property	City
85.7	10.94
82.0	29.4
85.0	30.4
84.5	163.8
91.4	+ 107.0
91.2	
98.5	180.2 cu. yds.
90.7	
93.3	
87.0	
92.7	
1059.0	
+ 107.0	
1163.8 cu. yds.	

