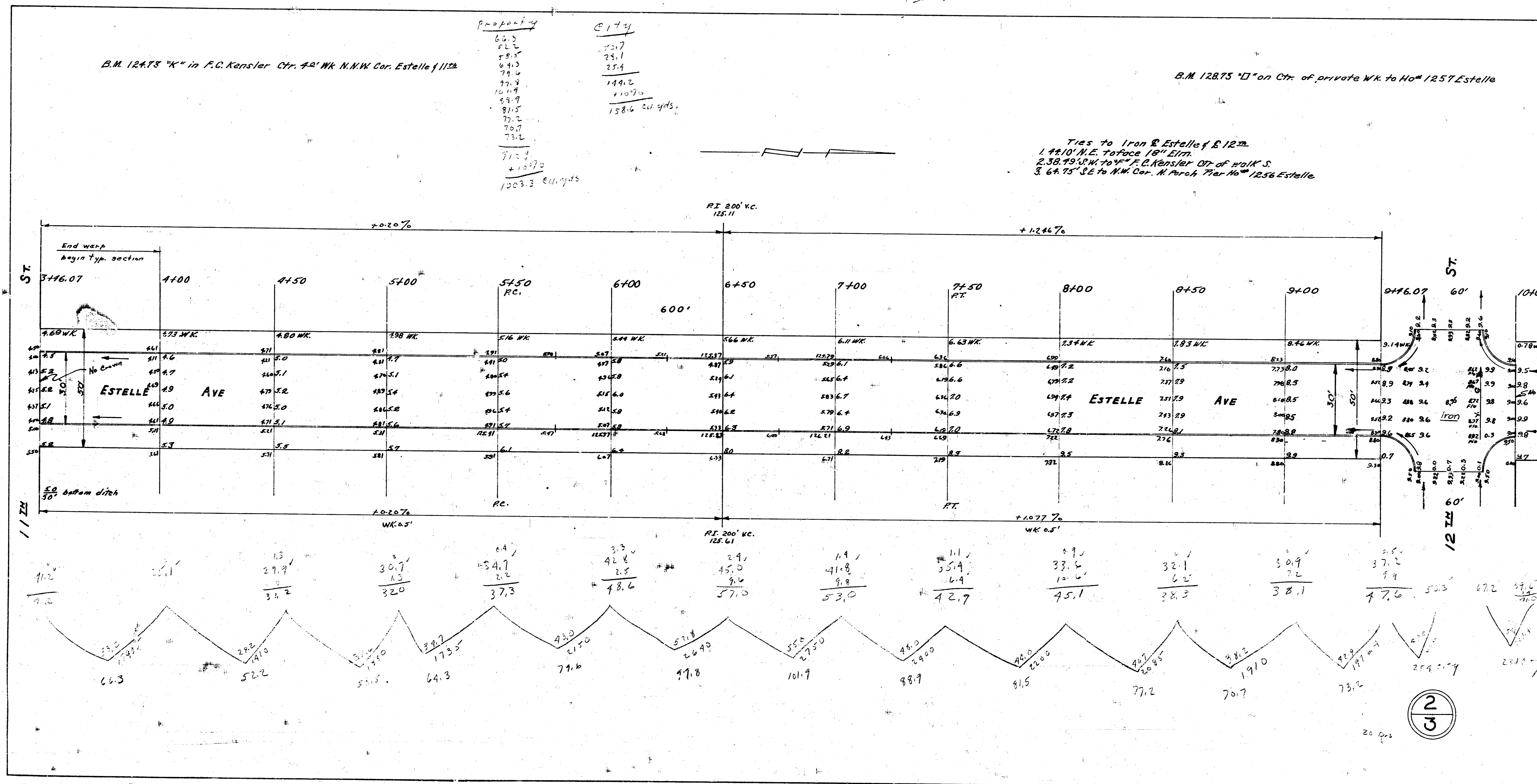


12-2-53



B.M. 12873 "K" in F.C. Kensler Ctr. 42' WK N.W. Cor. Estelle & 112th

Profile

66.3
72.2
79.5
81.3
79.6
77.9
76.4
81.9
81.5
79.2
78.7
73.2
71.7
+1.07%
1009.3

City

72.7
75.1
75.4
144.2
+100%
158.6

158.6 cut yds.

B.M. 12875 "D" on Ctr. of private Wk. to Ho^m 1257 Estelle

- Ties to Iron R. Estelle & 112th
1. 44' 10" N.E. to Face 1st Elm.
 2. 38' 45" W. to W. C. 1st 1/2" S. OP of 1st W.K.S.
 3. 64' 75" S.E. to N.W. Cor. N. Arch. 7th Ho^m 1256 Estelle

2/3

