

Book A-4

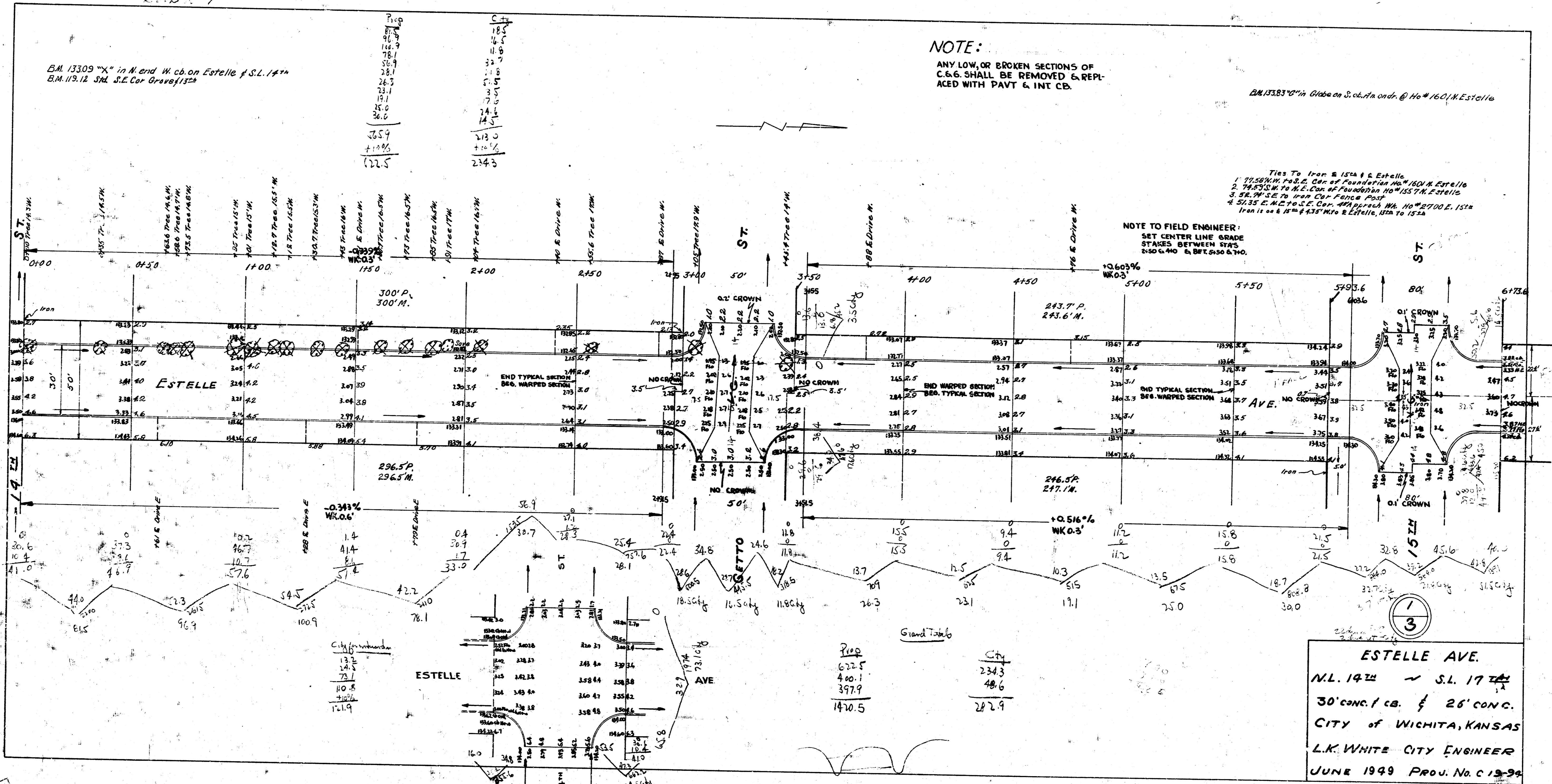
B.M. 13309 "X" in N. end W. cb. on Estelle f. S.L. 17th
B.M. 119.12 S.W. S.E. Cor. Groves 15th

NOTE:
ANY LOW OR BROKEN SECTIONS OF
C.&G. SHALL BE REMOVED & REPL.
ACED WITH PAVT & INT. CB.

B.M. 13383 "O" in Globe on S. cb. on und. @ Ho # 160 N. Estelle

Ties To Iron 5. 15th & Estelle
1. 77.58' N. to S.E. Cor. of Foundation Ho # 160 N. Estelle
2. 74.93' N. to N.E. Cor. of Foundation Ho # 157 N. Estelle
3. 58.29' E. to Iron Cor. Groves 15th
4. 51.35' E. to S.E. Cor. of Ho # 160 N. Estelle
Iron 11 on 5. Ho # 435' W. to 2 Estelle, 15th to 15th

NOTE TO FIELD ENGINEER:
SET CENTER LINE GRADE
STAKES BETWEEN STAS
250 & 400 & BET. 650 & 700.



B.M. 133.83 "G" in Globe on S. cb. An. on drive @ No. 1601 N Estelle

100
24
31.6
30.0
28.9
31.4
31.5
30.7
31.7
32.8
30.0
37.0
19.8
8.7
363.7
+10.5%
400.1

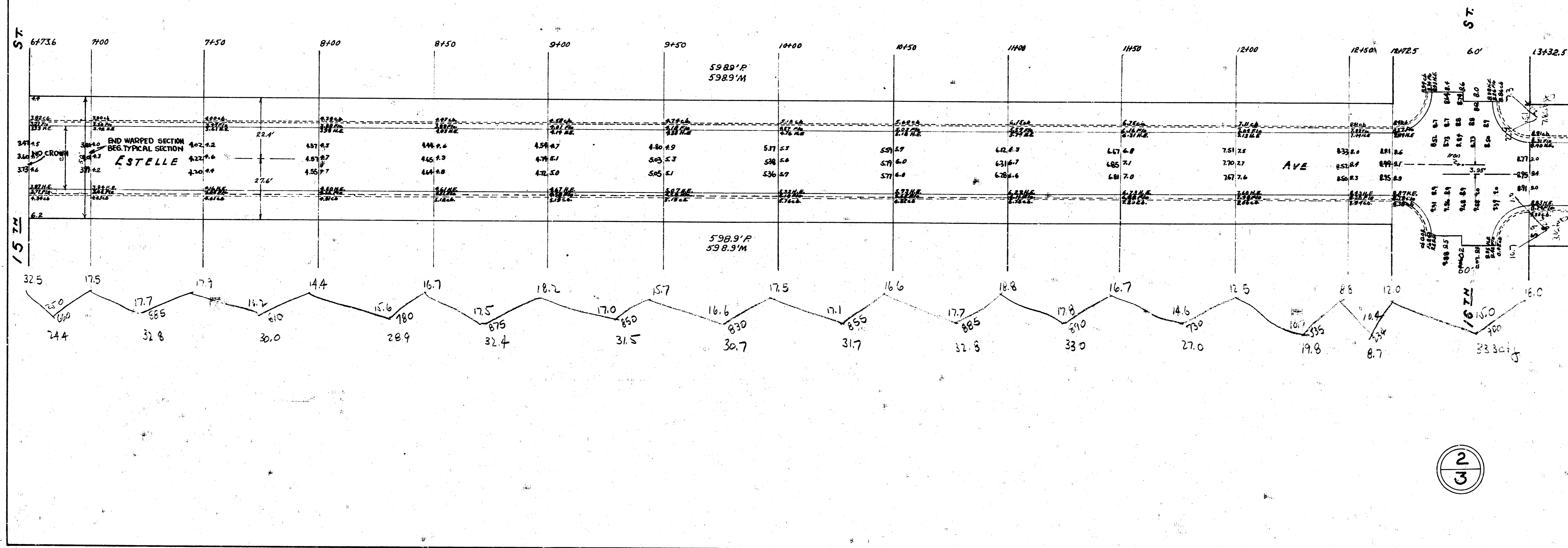
Ct
33.3
7.8
3.1
44.2
+10.5%
48.6

NOTE:

ANY LOW OR BROKEN SECTIONS OF C&G SHALL BE REMOVED & REPLACED WITH PAVT & INT. CB.

B.M. 139.30 "G" in Globe E. cb Estelle S. 1/4 N. 1/4

Ties To Iron R. 161/8 Estelle S.
 1.6730 S. E To NW Cor. Conc. Parch. No. 1658 Estelle
 2.92.53' N. E To 16" Spine W. S. 8" Elm.
 3. 68.37' S. W To N.E. Cor. Conc. Parch. No. 1657 Estelle



B.M. 133.30 "C" in Globe E. cb. Estelle 5th N. AL of 16th

Prop
11.0
28.7
38.4
38.1
31.9
31.1
31.4
33.7
34.1
33.0
32.1
31.0

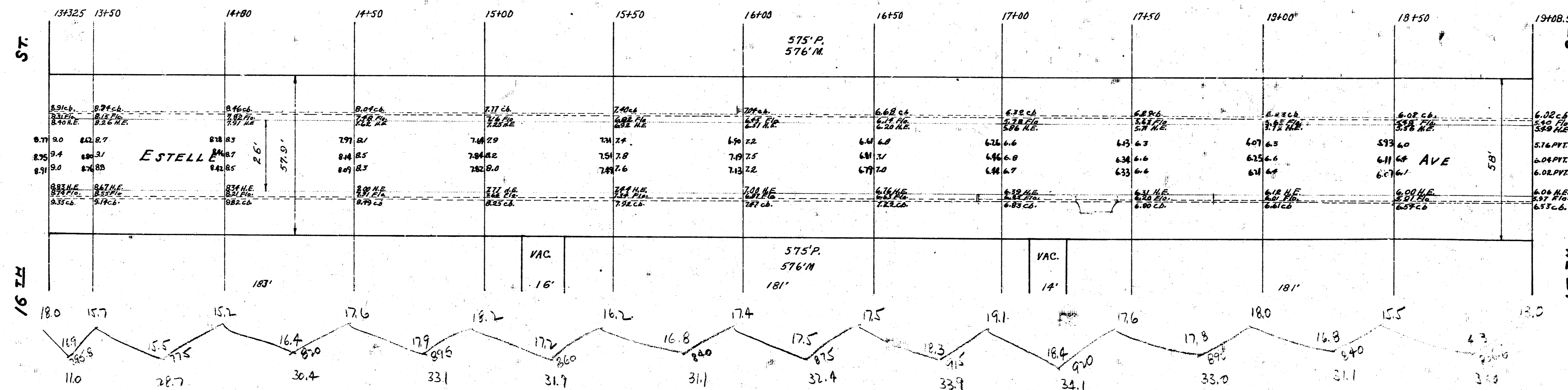
361.7
+1006

3977.9

NOTE:

ANY LOW OR BROKEN
SECTIONS OF C.C. SHALL
BE REMOVED & REPLACED
WITH PAVT & INT. CB.

B.M. 136.02 "G" in Globe SL 17th W. cb. Estelle



3
3

4 4 4 50