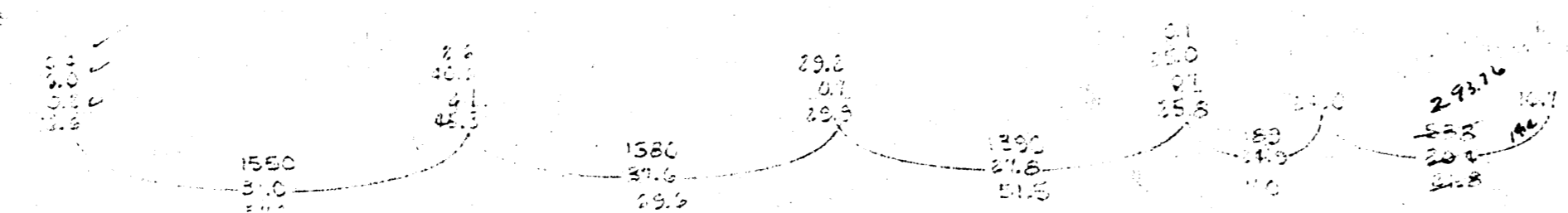
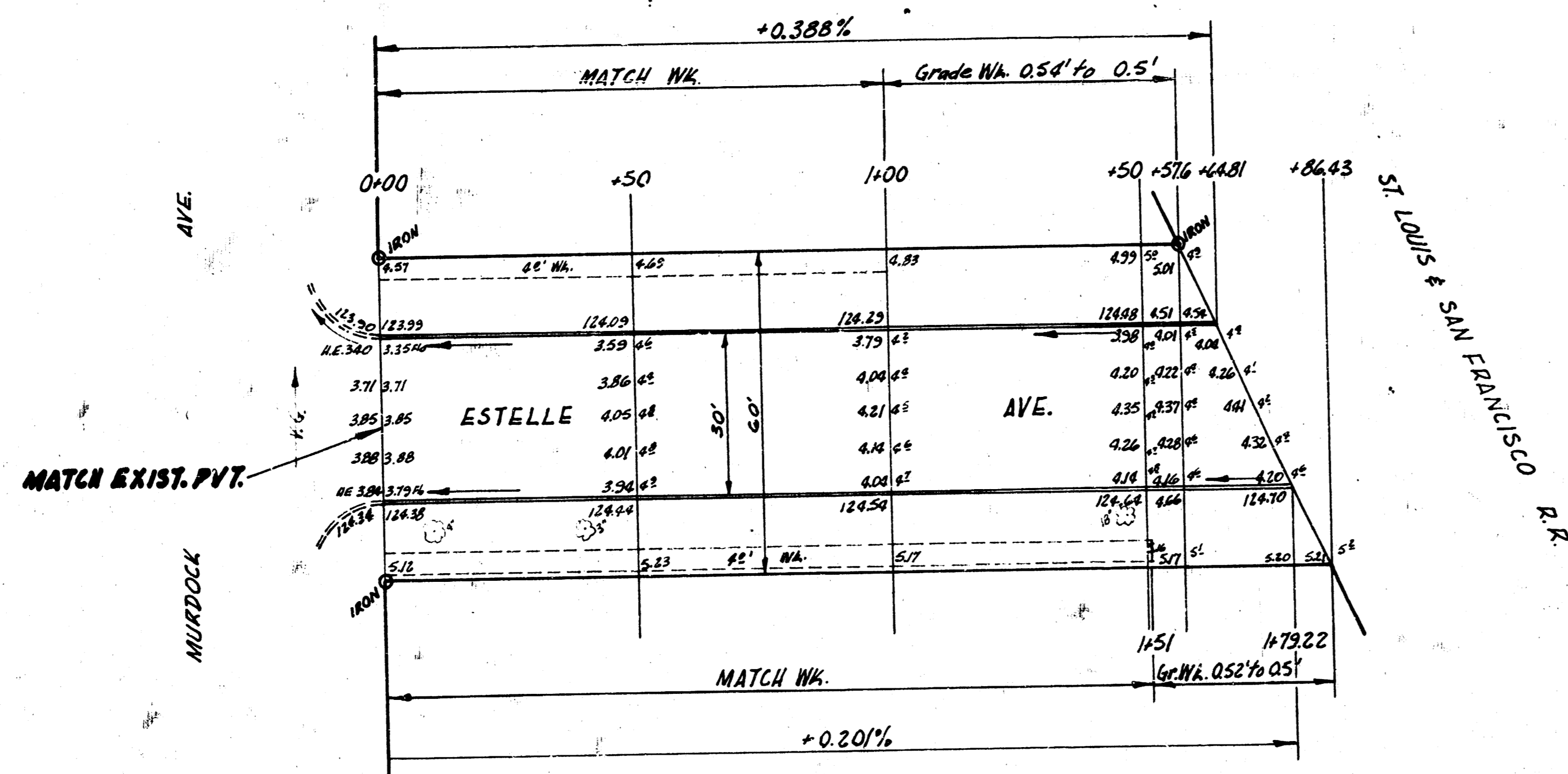


B.M. 124.23 Top Cb. E.S. Estelle S.L. Murdock.

Chain N. on N. R.



ESTELLE AVE.
 N.L. MURDOCK TO
 S.L. ST. LOUIS & SAN FRANCISCO RR
 30' CONC. & CB.
 CITY OF WICHITA, KANS.
 B.E. SMITH CITY ENGINEER
 SEPT., 1954 PROJ. NO. C14-257

TOTAL PROJECT
 100%
 100%
 100%
 100%