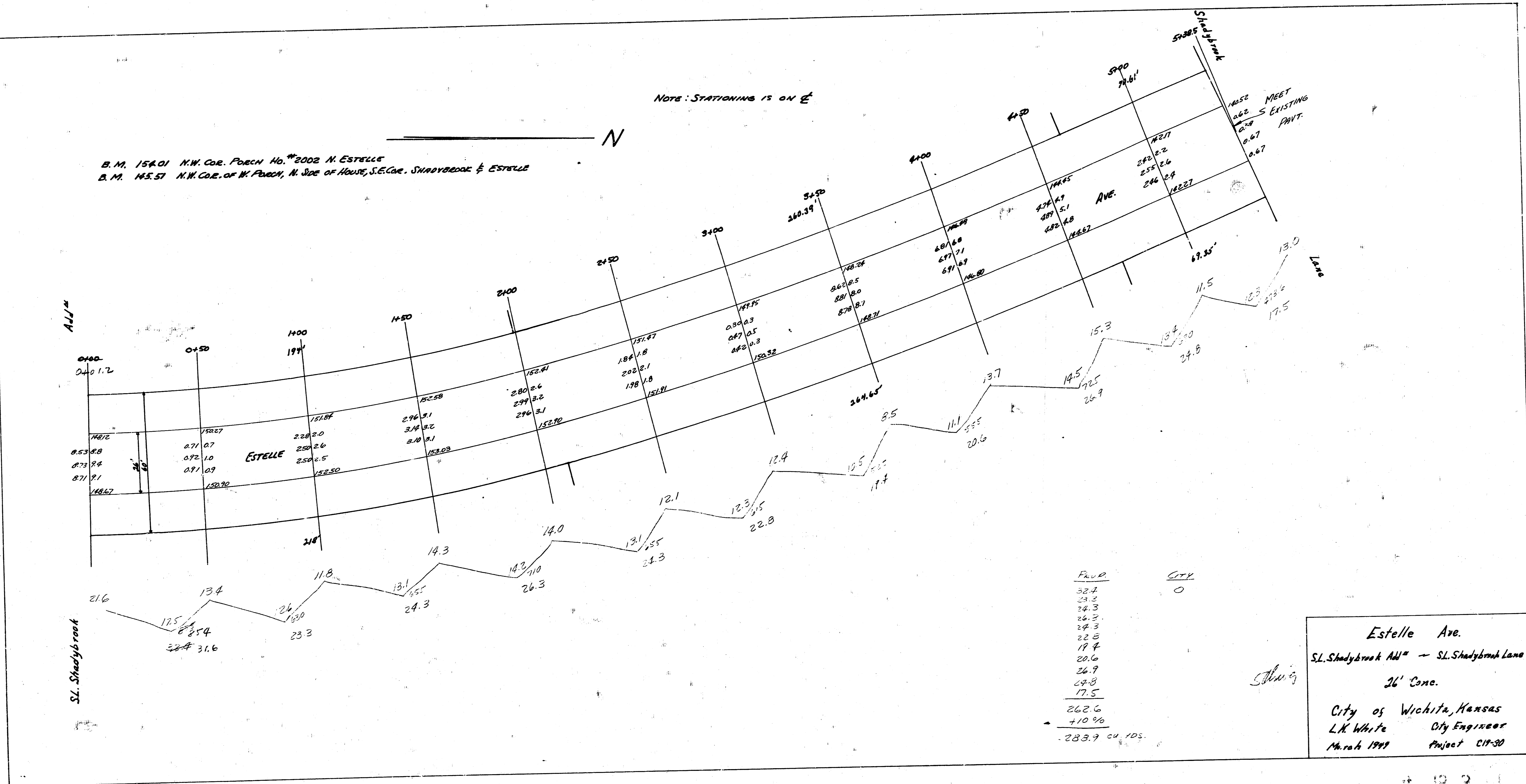


B. M. 154.01 N.W. Cor. Porch No. 2002 N. Estelle
 B. M. 145.51 N.W. Cor. of N. Paxon, N. Side of House, S.E. Cor. Shadybrook & Estelle

NOTE: STATIONING IS ON E



PROP	CITY
32.7	0
24.3	
26.3	
24.3	
22.8	
19.4	
20.6	
26.9	
24.8	
17.5	
262.6	
+10%	
283.9	CU YDS.

Estelle Ave.
 SL Shadybrook AVE - SL Shadybrook Lane
 26' Conc.
 City of Wichita, Kansas
 L.K. White City Engineer
 March 1919 Project C17-30