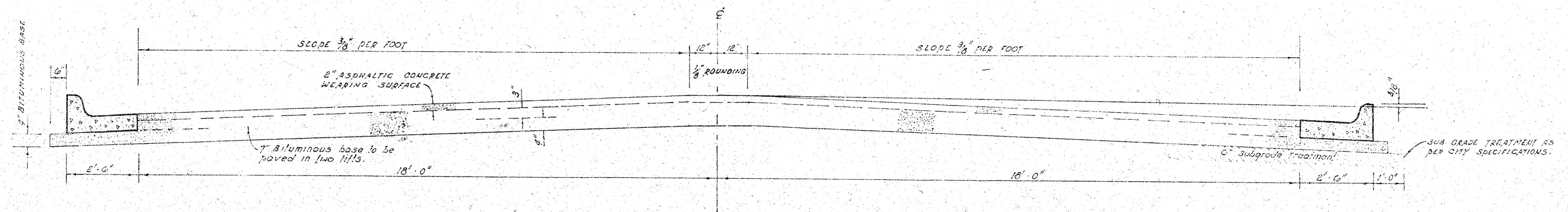


ESTHNER AVE.

E.L. MERIDIAN—E.L. SEDGWICK

DAKS574109



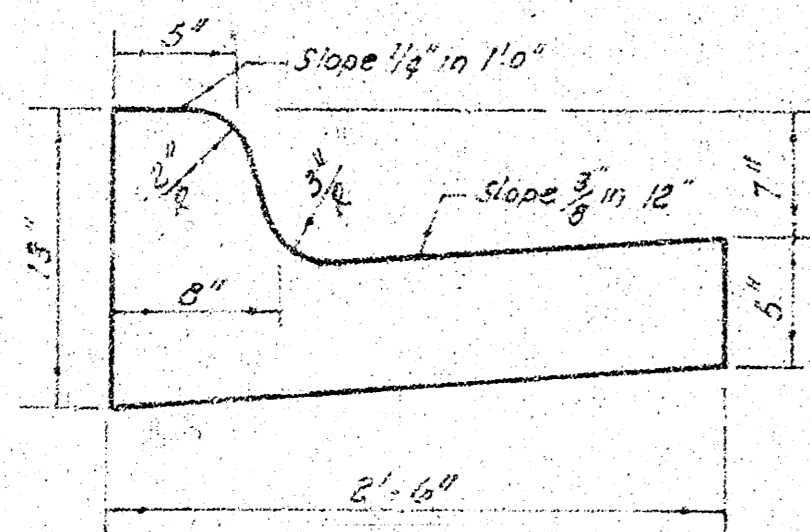
TYPICAL SECTION

The a.c. pavement between the curb & gutter shall be paid as sq yds 9" A.C. pavement (7" Bituminous Base). The Bituminous Base under the curb & gutter shall be paid as sq yds 9" Bituminous Base.

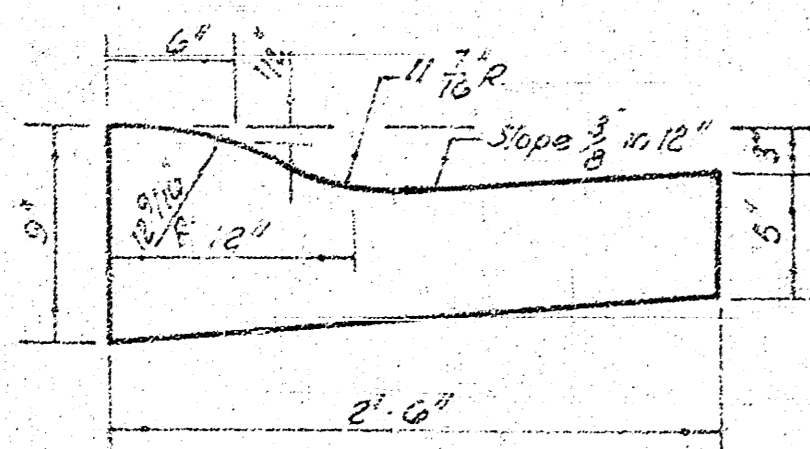
41' ASPHALTIC CONCRETE PAVEMENT WITH BITUMINOUS BASE

A TACK COAT OF EMULSIFIED ASPHALT (SS-1H) SHALL BE APPLIED AT AN APPROXIMATE RATE 0.05 GALLONS PER SQ YD BETWEEN LIFTS OF ASPHALTIC MATERIALS WHEN ORDERED BY THE ENGINEER. TACK COAT WILL NOT BE PAID FOR DIRECTLY AND SHALL BE CONSIDERED AS SUBSIDIARY TO PRICE BID FOR ASPHALTIC PAVEMENT. BITUMINOUS BASE AND ASPHALTIC CONCRETE WEARING SURFACE SHALL BE PLACED WITH A LAYDOWN MACHINE HAVING AUTOMATIC ELECTRONIC CONTROLS FOR CROWN AND GRADE. CONSTRUCTION JOINTS IN EACH LIFT SHALL BE STAGGERED A MINIMUM DISTANCE OF 1' WITH JOINTS IN PRECEDING LIFTS AND SUCH THAT A JOINT WILL BE CONSTRUCTED ON THE PAVEMENT CENTERLINE IN THE TOP LIFT.

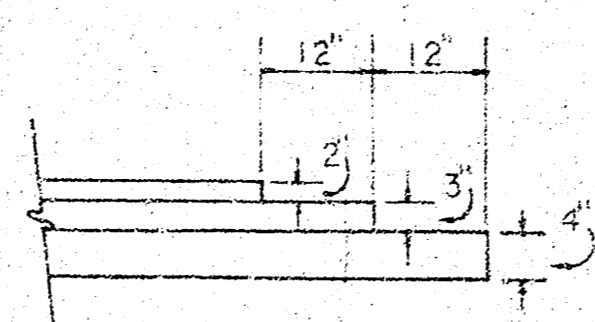
COMBINED CURB & GUTTER



HOLL TYPE CURB & GUTTER



DETAIL OF TRANSVERSE CONSTRUCTION JOINTS



TRANSVERSE CONSTRUCTION JOINTS SHALL BE CONSTRUCTED IN FLEXIBLE BASE PAVEMENTS AT LOCATIONS WHERE PAVEMENT TEMPORARILY ENDS TO FACILITATE FUTURE PAVEMENT CONSTRUCTION AS SHOWN BY DETAIL. THE COST OF CONSTRUCTING THE TRANSVERSE CONSTRUCTION JOINTS SHALL NOT BE MEASURED OR PAID FOR DIRECTLY BUT SHALL BE INCLUDED IN THE BID PRICE FOR SQUARE YARDS OF ASPHALTIC CONCRETE PAVEMENT.

CITY OF WICHITA, KANSAS

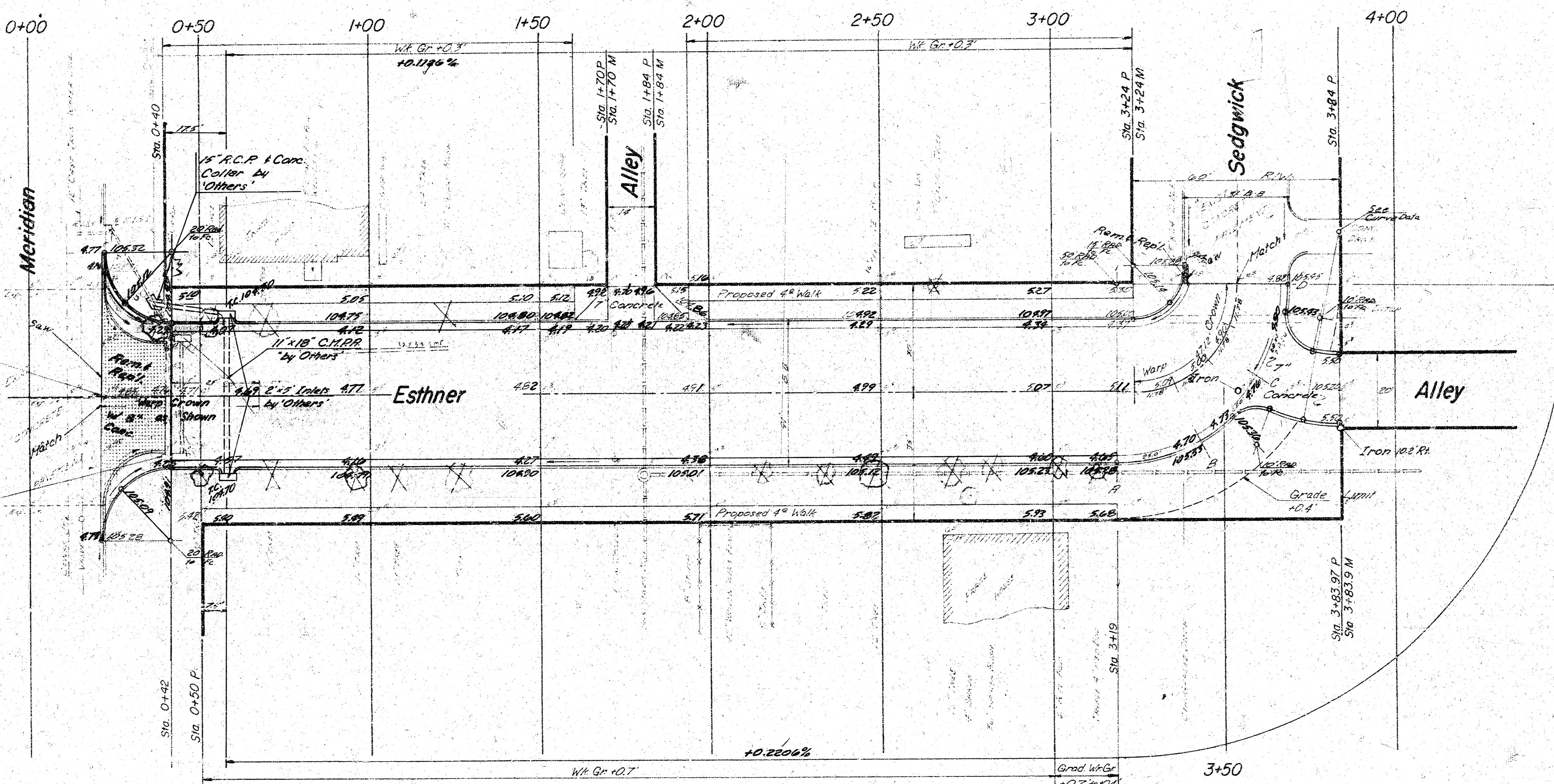
DEPARTMENT of PUBLIC WORKS - Engineering Division.

R. W. LINN CITY ENGINEER

DATE June, 1976 Proj No. DAKS574109

B.M. 105.81 R.R. Spike on S.E. Side Power Pole on N.W. Meridian & Esthner
 B.M. 105.52 "□" Top East Curb Sedgwick at N.L. Esthner
 □ is ☉ of Esthner

Scale 1"=20'



CURVE DATA for ALLEY RETURN

Data based on ☉ Alley
 R=43.81'
 Δ=29°12'22"
 L=22.33'
 T=11.41'
 C=22.09'

Δ=90°00'00" R=50.0' T=50.00' L=78.54' C=70.71'

STA	ANG	CHORD	CHORD	CHORD	CHORD
A	-	-	-	-	0°00'00"
B	240'	28.70	41°18'26"	41°18'26"	41°18'26"
C	320'	28.70	41°18'26"	41°18'26"	41°18'26"
D	28.54	32.66	42°08'08"	42°08'08"	42°08'08"

Contractor to determine utility of valve and correct slightly for relocation or adjustment to grade.

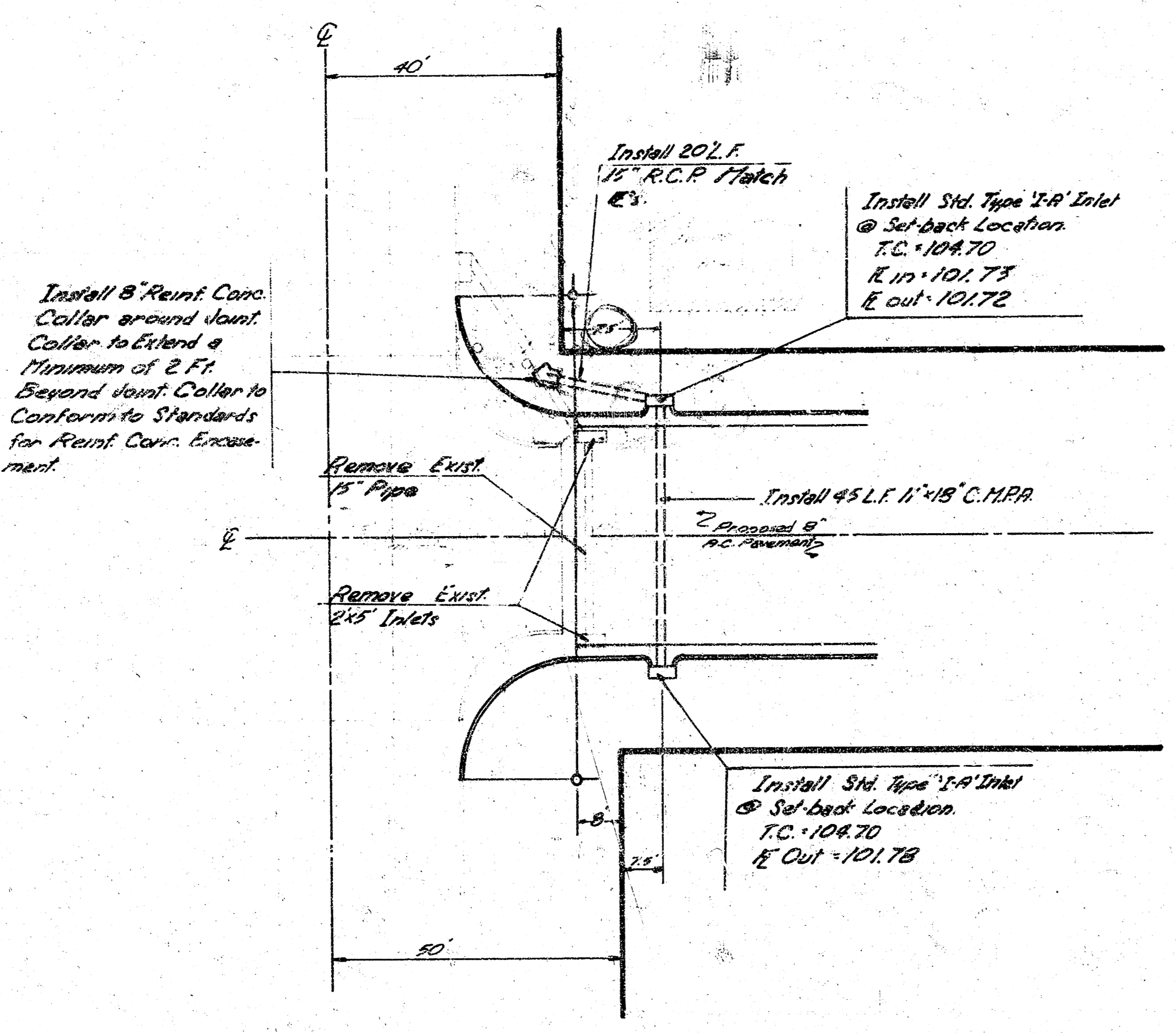
TYPE OF 5054 CASE...
 REMAINS...
 TREATMENT...
 CEMENT TREATMENT...
 TION, OR ANY COND...

NOTE TO FIELD ENGINEER...
 Check existing and proposed...
 ground elevations...
 TO BE CONSIDERED...

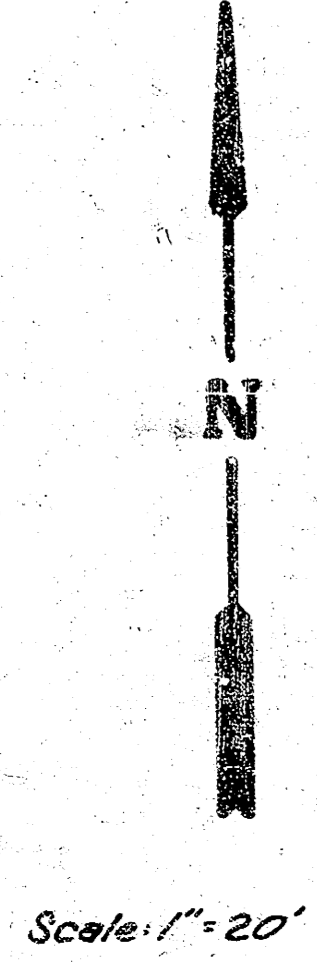
Earthwork		Manipulation	
Property	City	Property	City
Excavation:	566.6 C.Y.	Excavation	44.7 C.Y.
+10%	56.7	+10%	4.5
Total	623.3 C.Y.	Total	49.2 C.Y.
Comp. Fill	0.2 C.Y.	Comp. Fill	0.2 C.Y.

Note: Trees to be Removed are Marked thus ☒. Except that any Tree Marked for Removal which in the Opinion of the Engineer Can be Saved Shall be Saved.

ESTHNER AVE.
 E.L. Meridian-E.L. Sedgwick
 DAKS574109



Material for Backfill is to be Excavated Material. Backfill to be Compacted to Original Density. Cost to be included in bid price of L.F. of Pipe.



As Built 11-18-76

Incidental Drainage
in Connection with Paving
Esthler Pk.
City of Wichita, Kansas
R.W. Linn - City Engineer
Date: June 1976
Project No. DWA0574109

FILMED FROM THE BEST