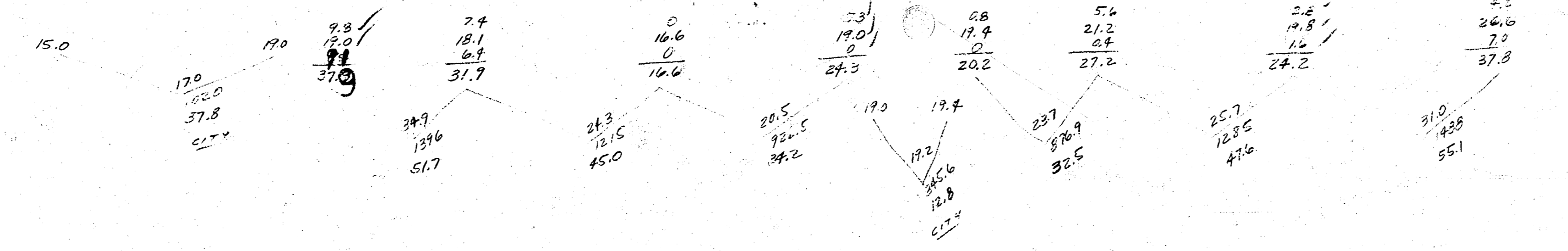
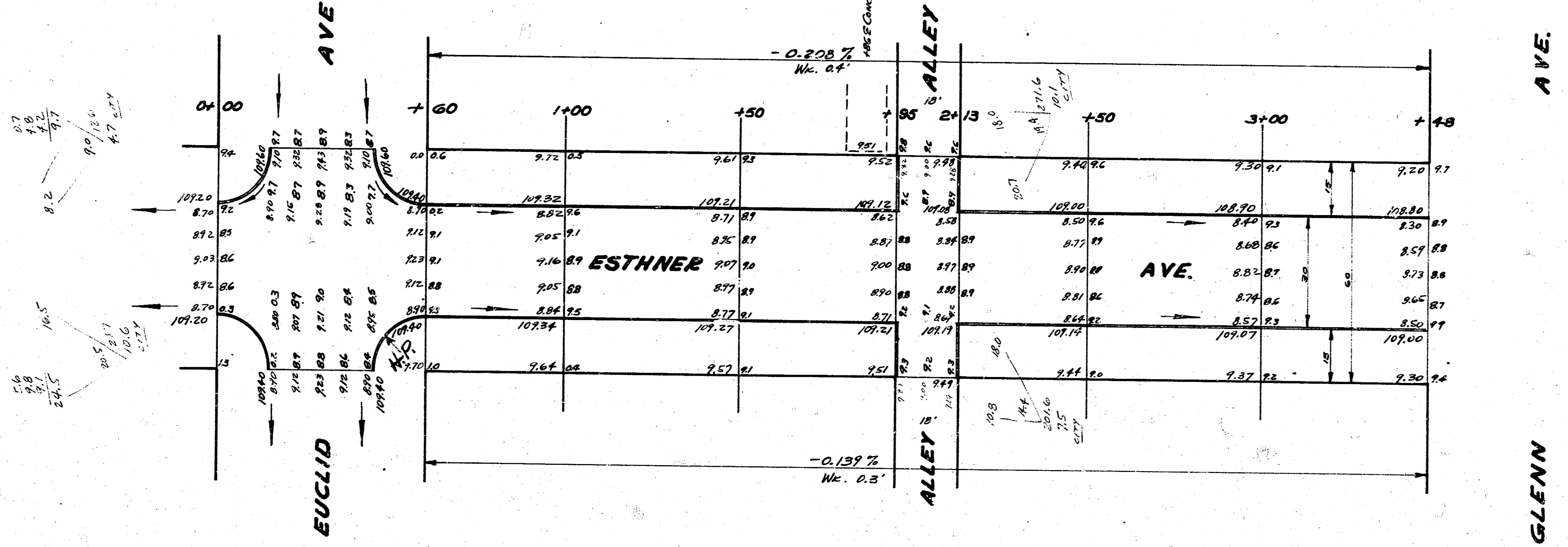


B.M. 107.60 M IN MUELLER, FREE PLUG, NW COR. VINE & ESTHNER

0+00 W.L. EUCLID N&S
TIES TO IRON & BORN STREETS, IRON 12" DEEP
30.0' NE TO TACKED STAKE 30.0' NW TO TACKED STAKE

0+30 & EUCLID N&S. TIES TO IRON.
72.4' NE TO SW COR. Ho.
430' NW TO S.E. COR. Ho.

PROP.	CITY
226.1	25.5
300.1	132.9
574.2	219.9
1100.2	210.2
724.4	241.9

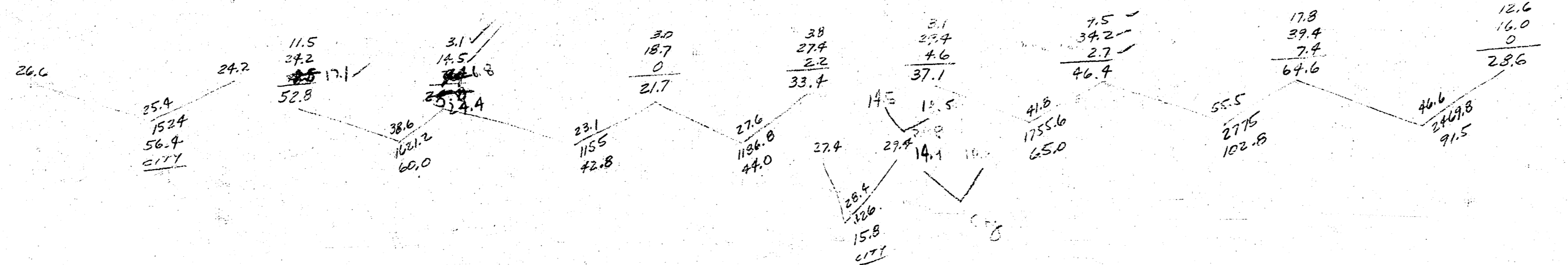
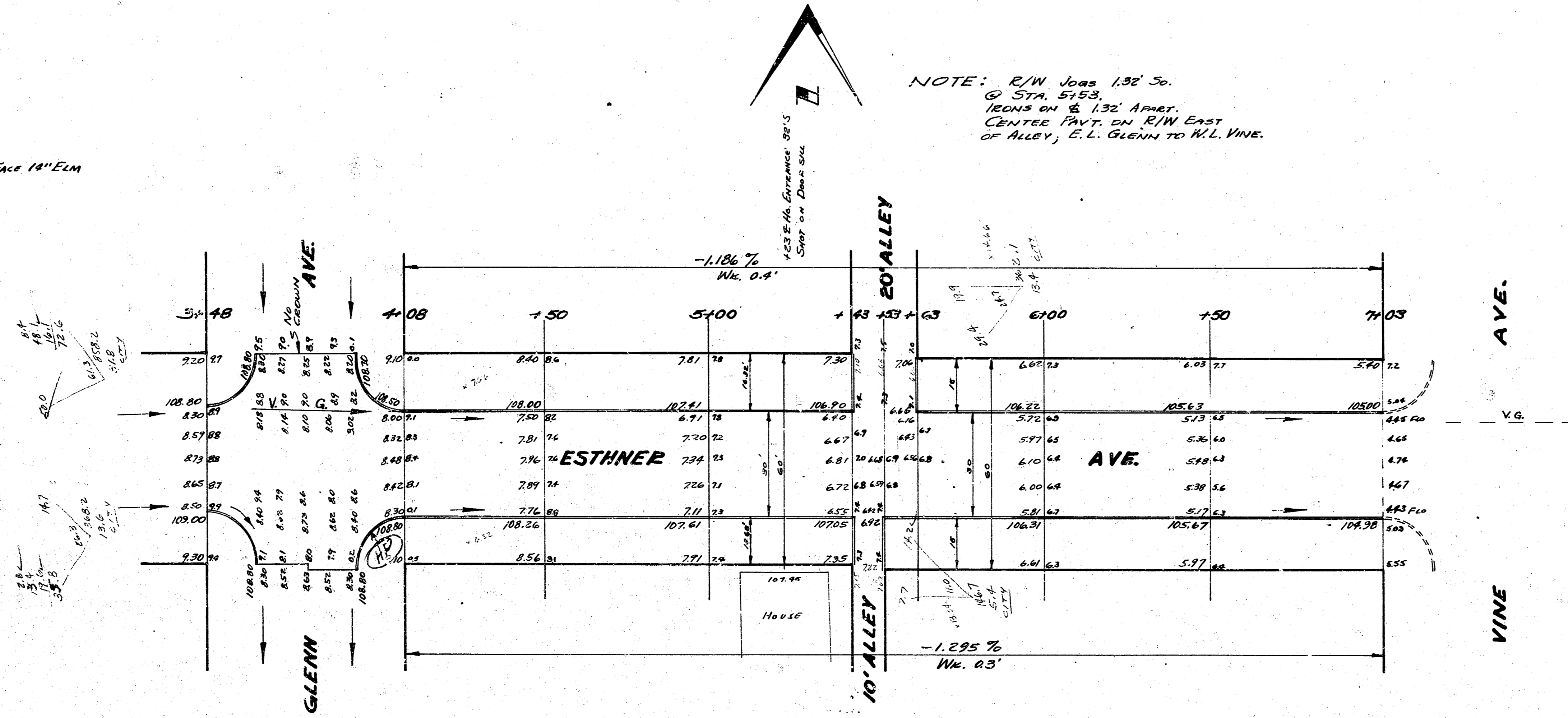


ESTHNER JOBS 132' N of STA 5+43
Two Trains 132' APART

3+48 W/ GLENN N/S LEGN & BOTH STREETS
30.0' NE TO TACKED STAKE
30.0' NW TO TACKED STAKE

3+78 E GLENN N/S LEGN
12" DIA 36" PIPE 12" DEEP
57.1' NE TO FACE 14" ELM, 47.8' N. BY NW TO FACE 14" ELM

NOTE: R/W JOBS 132' So.
@ STA. 5+53.
TRAINS ON E. 132' APART.
CENTER PVT. ON R/W EAST
OF ALLEY, E. L. GLENN TO W.L. VINE.



DATE
FILED
1961

CITY
1364

2
2

1 2 4 6