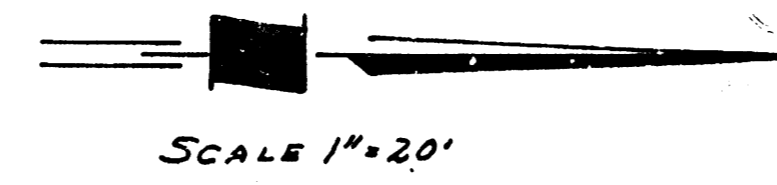
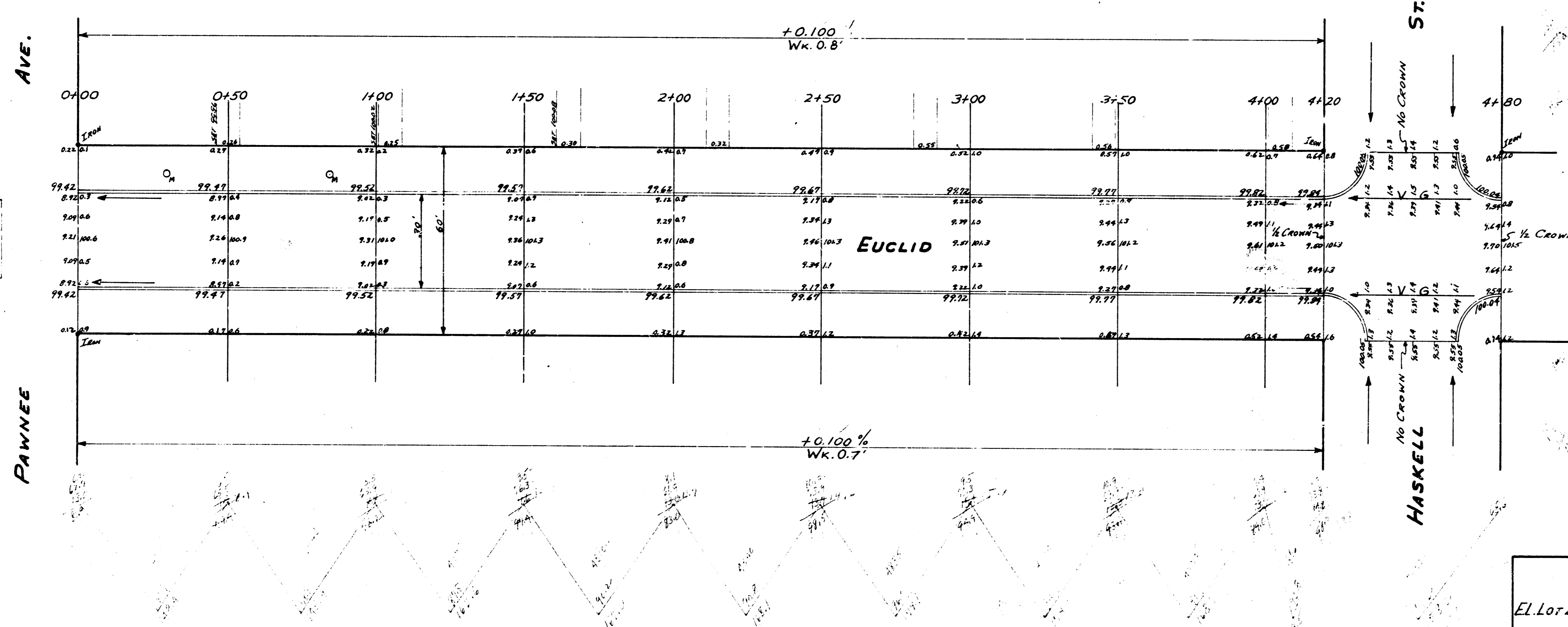


B.M. 101.942 STANDARD 6" x 12" S.O. OF SE. COR. PAWNEE & GLENN St.
 B.M. 101.87 SE. COR. OF LOWER STEP HOUSE #2319 EUCLID
 B.M. 102.64 SE. COR. LOWER STEP HOUSE #2207 EUCLID
 B.M. 104.10 STANDARD S.E. GLENN & MAY
 BASE LINE IS E OF EUCLID
 STATIONING ON EAST PROP. LINE



NOTE: TO FIELD ENG & CONTRACTOR
 MATCH ALL DRIVES SHOWN ON THIS
 PLAN



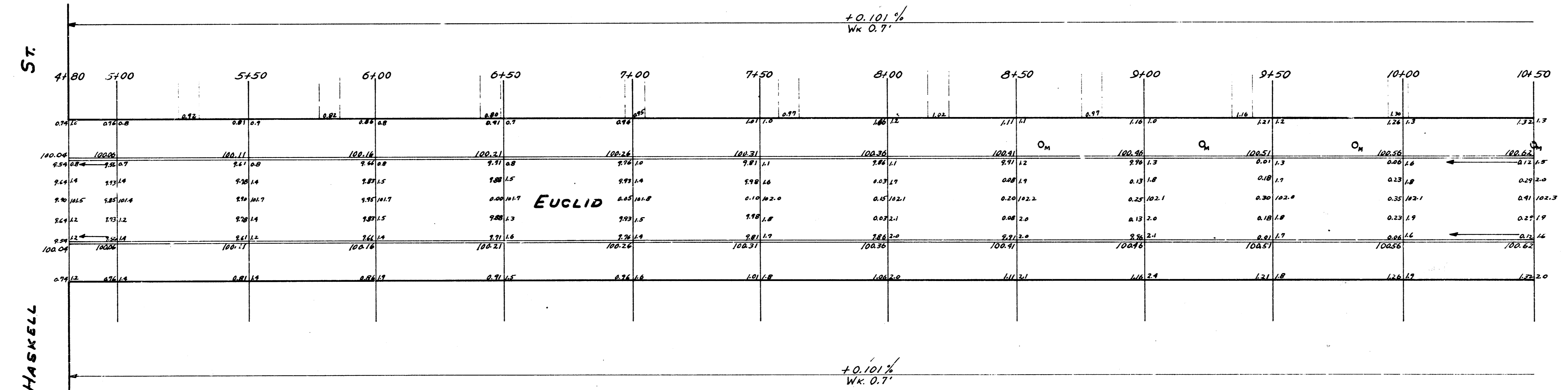
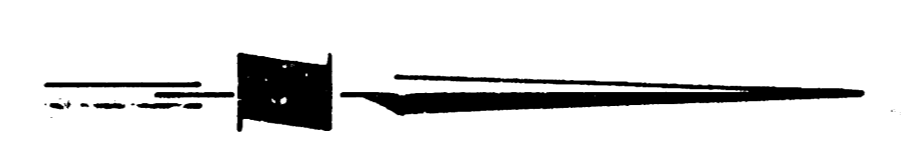
B.M.
 101.942
 101.87
 102.64
 104.10

CITY
 5.56
 5.12
 545.6 50.125 107
 4780.3
 5454.9 50.125 107



EUCLID
 E.L. LOT 24 BLK 16 PAWNEE PARK ADD. TO H.L. PAWNEE
 30' CONC. & CO.
 CITY OF WICHITA KAN.
 B.E. SMITH CITY ENGINEER
 JUNE 1955 PROJ. NO. C14-354

(1/3)



HASKELL

ST.

EUCLID

EUCLID

EL. LOT 24 BLK 16 PAWNEE PARK ADD TO N.L. PAWNEE

2/3

