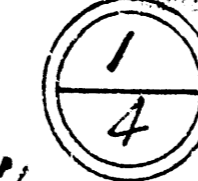
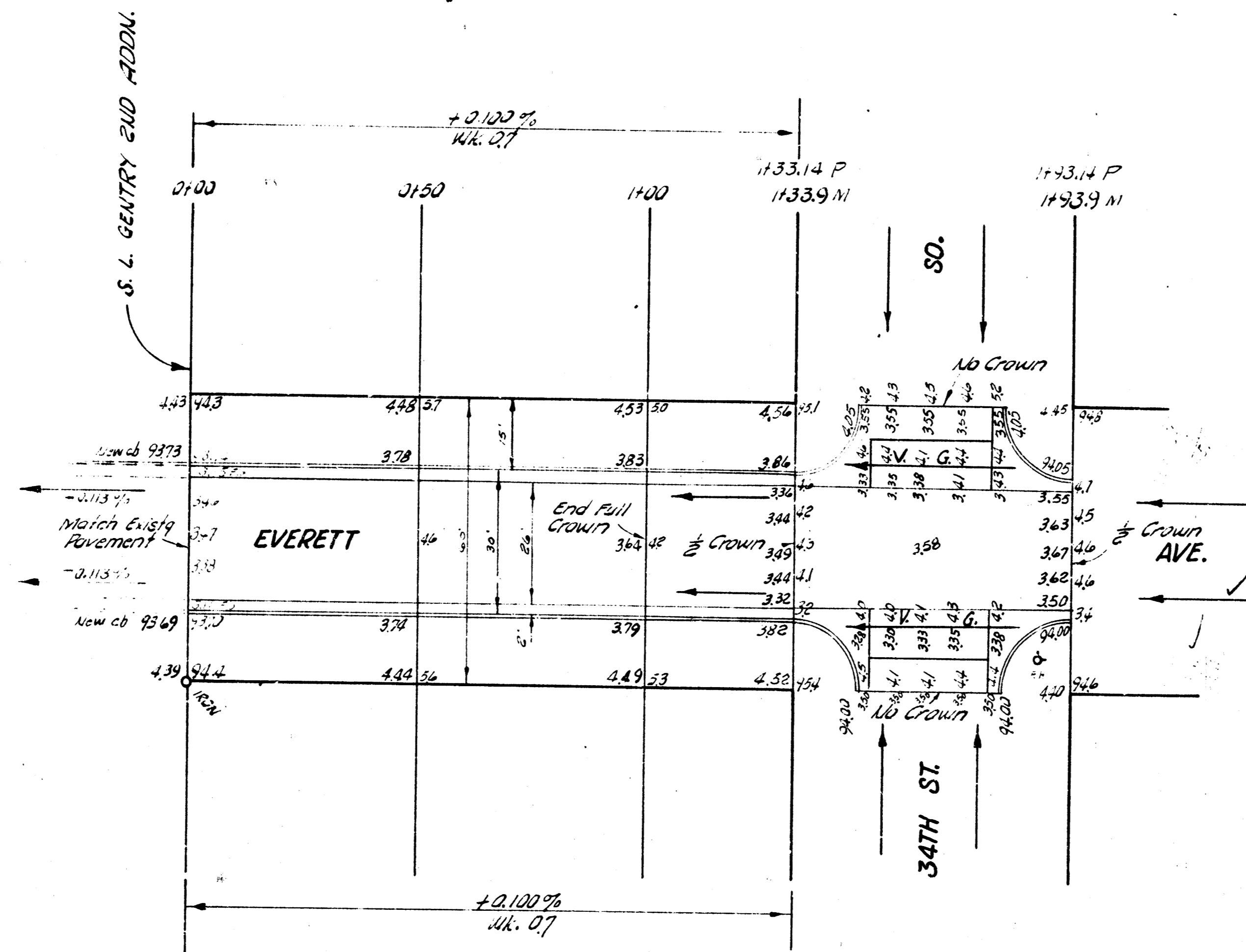


B. M. 96.04 S.W. cor. Porth rd. NE. cor. St. Clair & 35th St. So.

B. M. 93.72 R. in Richie W. ab. Everett St. Gentry 2nd Addn.

S.A.E. 1" = 20'



EVERETT AVE.
SL. GENTRY 2ND ADDN. TO SL. 33RD. ST. SO.
26-2-30 A.C.
CITY OF WICHITA, KANSAS
B. E. SMITH CITY ENGINEER
JULY 1957 PROJ. NO. C16-205

B. M. 97.70 S.E. cor. Patch Ho. NW cor. 33rd of Everett.
 Stationing on west property line.

NOTE TO FIELD ENGINEER & CONTRACTOR:
 All entrance pipes to be disposed of in accordance
 with City dirt checkers instructions.

SCALE 1" = 20'

