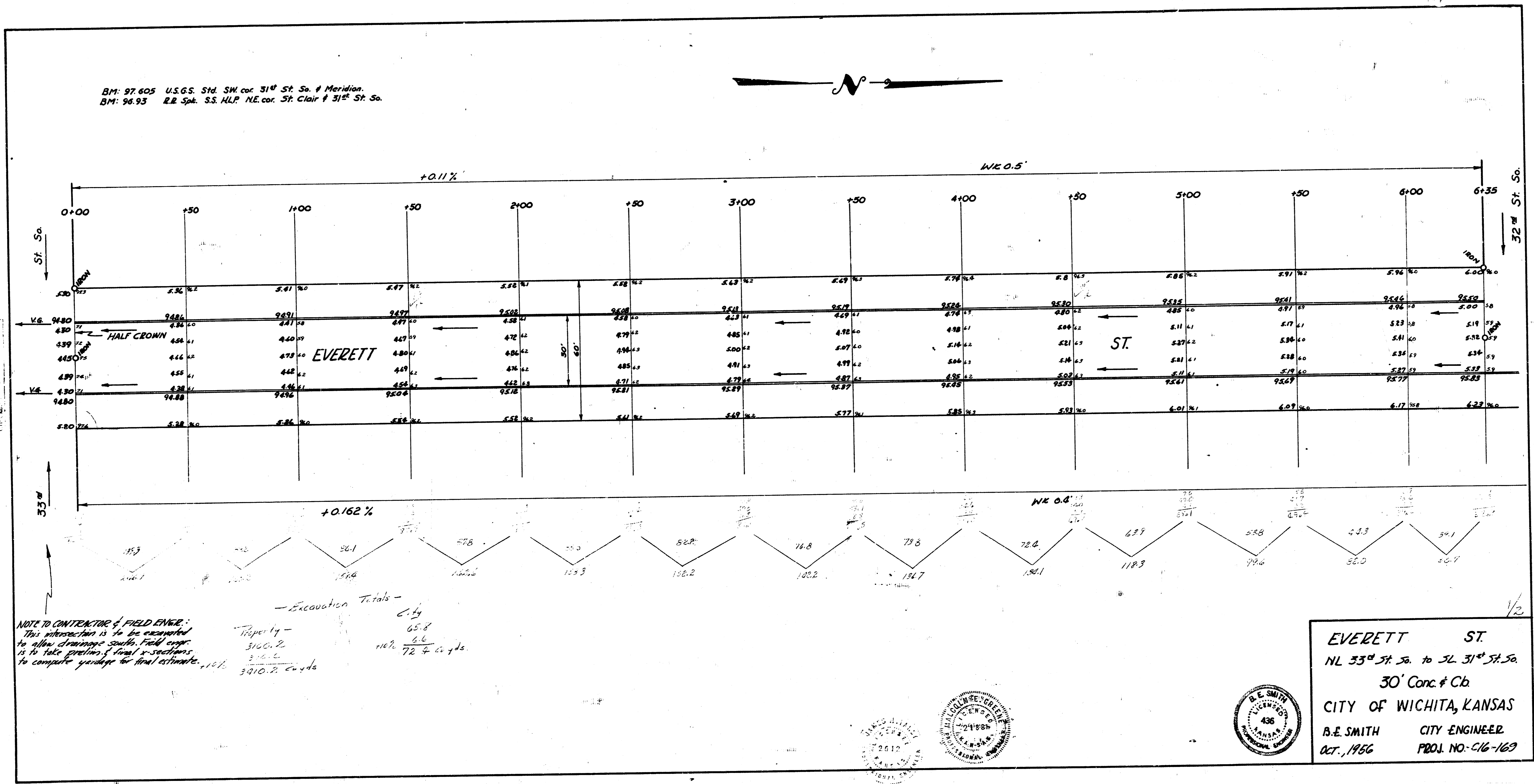
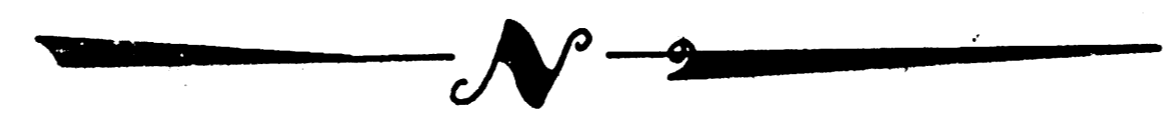


BM: 97.605 U.S.G.S. Std. SM. cor. 31st St. So. & Meridian.
 BM: 96.93 E.R. Spk. S.S. NLP. NE. cor. St. Clair & 31st St. So.

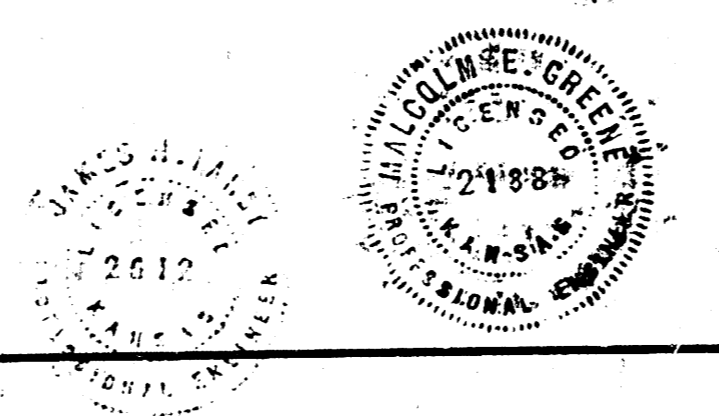


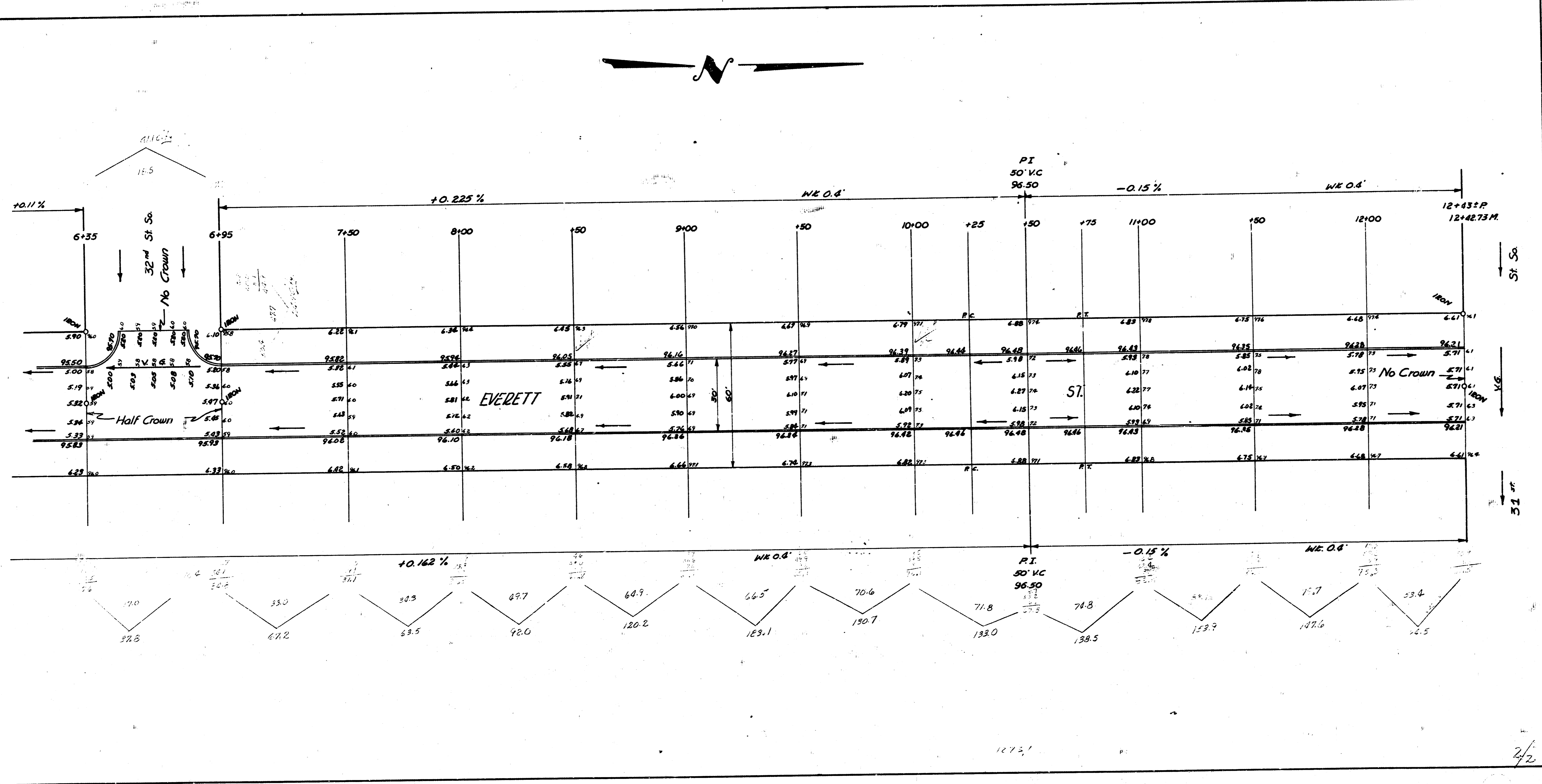
Surveyed by 1/15/57
 B.E. Smith
 City Engineer

NOTE TO CONTRACTOR OF FIELD ENGINE:
 This information is to be furnished
 to allow drainage south. Field eng.
 is to take profile of final sections
 to compute yardage for final estimate.

Excavation Totals -
 City 65.8
 Property 3100.2
 3166
 72 ft. 6 in. side
 3910.2 curbs

EVERETT ST.
 NL 33rd St. So. to 32nd St. So.
 30' Conc. & Cb.
 CITY OF WICHITA, KANSAS
 B.E. SMITH CITY ENGINEER
 OCT., 1956 PROJ. NO. C-16-169





11121

2/2