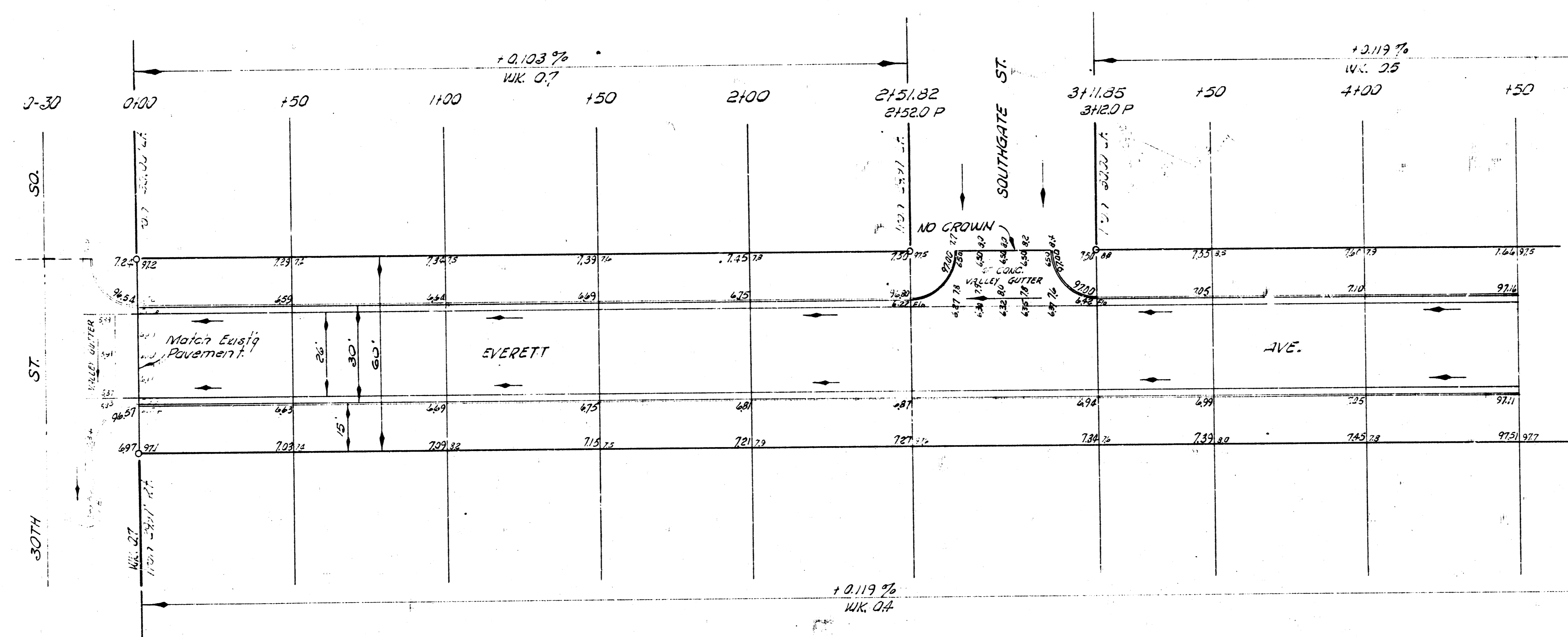
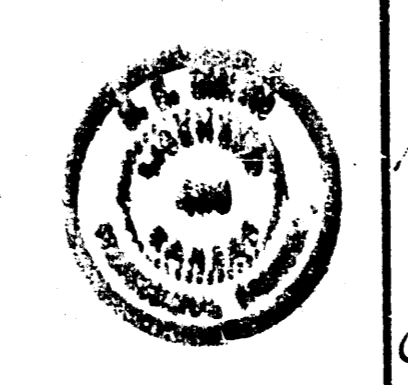
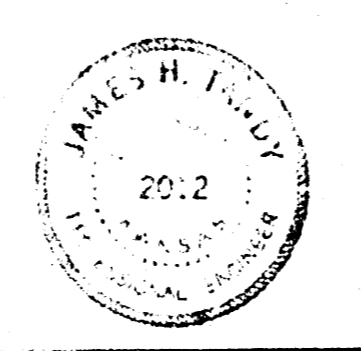


B.M. 99.27 NW cor. conc. Patch No # 210 on 30th St. SO.  
 B.M. 100.03 SE cor. conc. Patch No # 200 W. 29th St. SO.  
 Stationing from South to North along E. Everett Ave.

SCALE 1"=20'



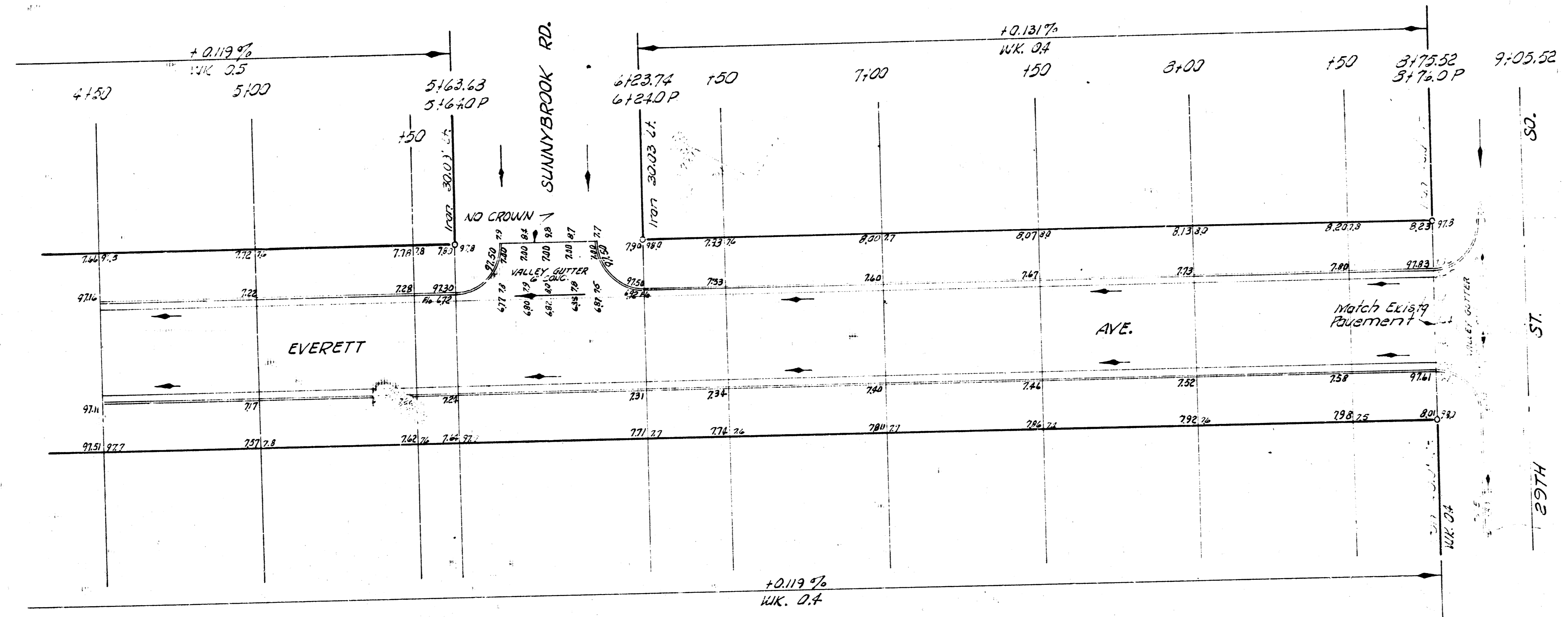
EARTHWORK	
CITY	PROP.
+10% 142.1	1595.6
-10% 14.2	159.6
<b>178.3 Cu. Yds.</b>	<b>1,755.2 Cu. Yds.</b>



1/4

**EVERETT AVE.**  
 NL 30TH ST. SO. TO NL 29TH ST. SO.  
 26-2-30 A. C.  
 CITY OF WICHITA, KANSAS  
 B. E. SMITH CITY ENGINEER  
 SEPT. 1958 PROJ. NO. 04-231

SCALE 1" = 20'



EVERETT AVE.  
NL 30TH ST. SO. TO NL 29TH ST. SO.

2/4

PROJ. NO. CH-231