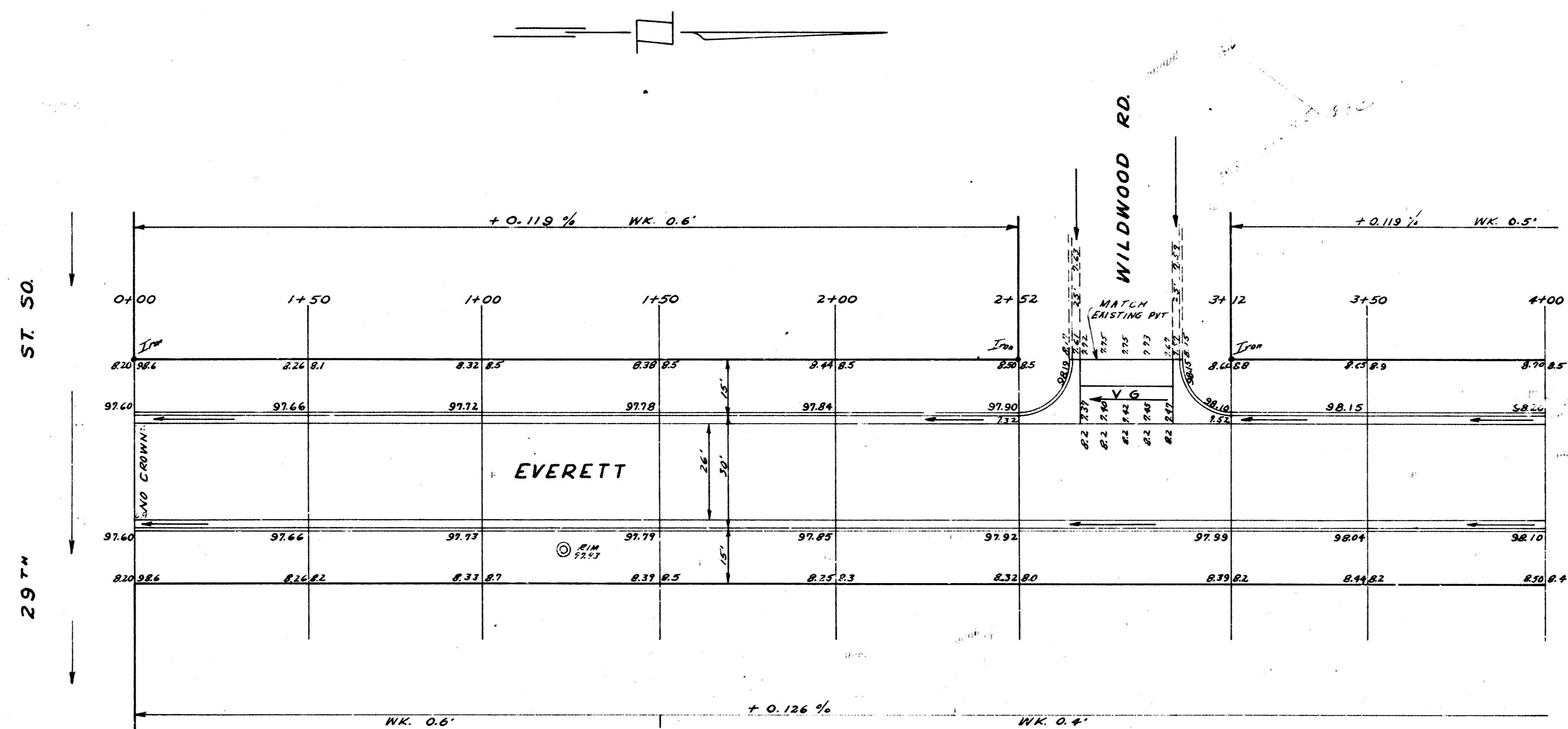


BM 99.67 STANDARD NE. C. 27TH MERIDIAN
 BM 98.49 12" IN RITCHIE ST. W. CH. EVERETT
 BM 99.97 S.E. COR. CONC. FOR H. HOUSE 2204 WILDWOOD
 STATIONING ON WEST PROP. LINE



Drawn by
 Checked by
 Date

Prep
 7/18/57
 8243 Street
 Excavation
 04
 2507
 11/1/57



EVERETT
 SL 27TH So. TO - NL 29TH So.
 26-2-30 AC
 CITY OF WICHITA, KAN.
BE SMITH CITY ENGINEER
 JULY 1957 PROJ. NO. C14-280

1/4

